



# Dell Inspiron n5050 Display Replacement

How to replace your broken display.

Written By: Tyler



## INTRODUCTION

Replacing the display is difficult because there are delicate cables that need to be manipulated.



### TOOLS:

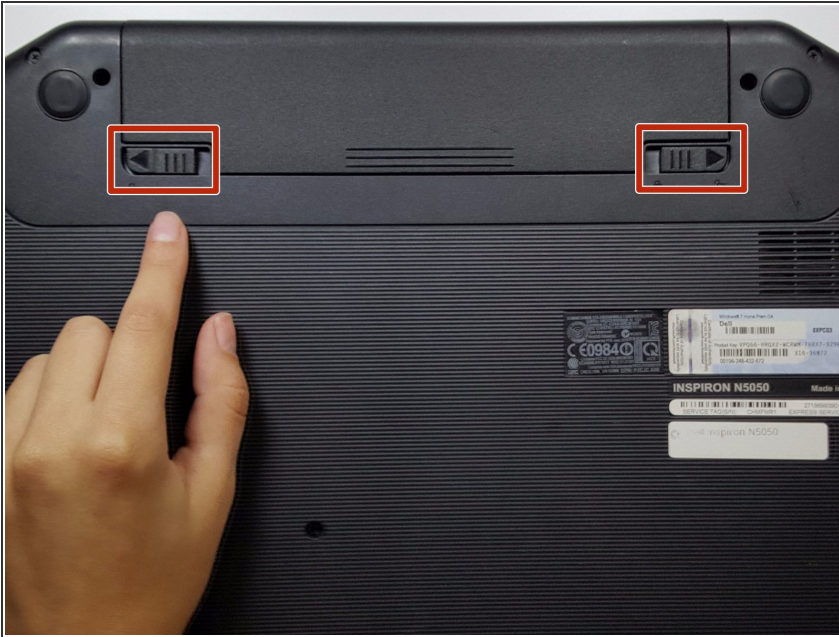
- [Spudger](#) (1)
- [Phillips #00 Screwdriver](#) (1)



### PARTS:

- [Inspiron 15 \(N5050\) LCD](#) (1)
- [15.6" PC Laptop LCD N156B6-L0B](#) (1)

## Step 1 — Battery



- Flip your laptop over to view the bottom and locate the two locks.

## Step 2



- Slide the two locks away from each other.
- ❗ Sliding these locks will loosen the battery to allow removal.



## Step 3



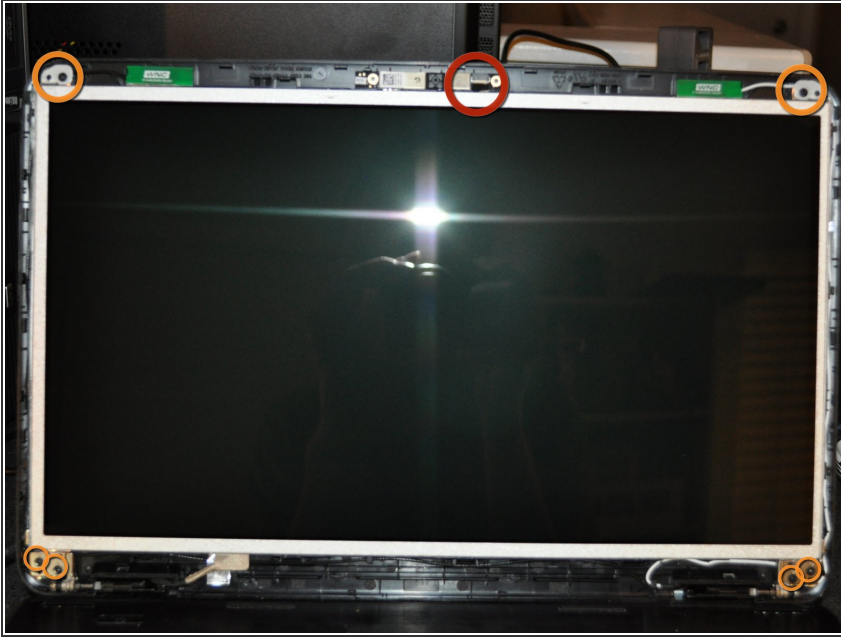
- Pull battery out of the laptop.
- ❗ Your laptop's battery should be completely removed.

## Step 4 — Display



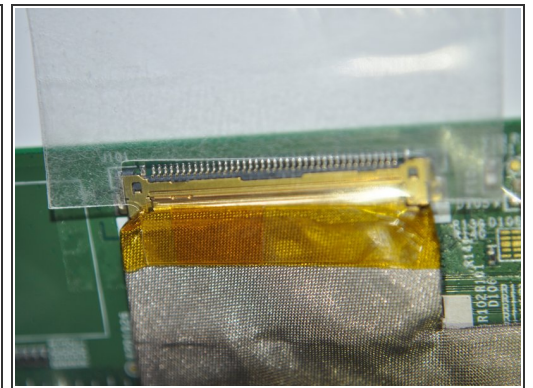
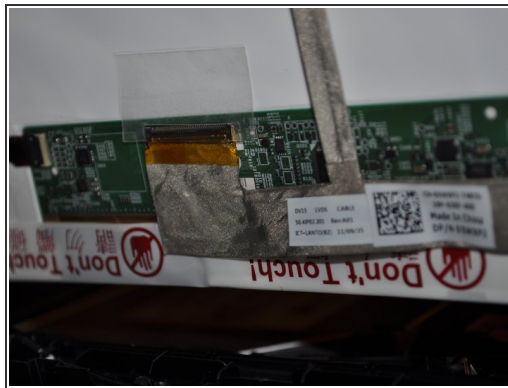
- Flip laptop right side up and open
  - Insert flat side of spudger gently along inside of screen and screen surround.
  - Work your way around the screen carefully releasing the screen surround from the lid.
- ⚠ The screen surround is held in place by delicate plastic clips, so don't use too much force.

## Step 5



- Unplug the cable from the camera.
- Unscrew the six screws attaching the display support frame to the laptop lid. Lower lid to desk.
  - ⚠ The lid still has the WIFI antenna connected to it.
- When reassembling, plug the cable to the camera first, then screw in the lid.


## Step 6



- Unplug the cable from the display.
  - ⚠ This cable has delicate wires that can easily break. It is glued to the back of the display, but can be carefully peeled away.
- The plug is held in on the sides with two clips. Gently pull on the each side of the cable to remove it from its connector.

## Step 7



-  For this part, it is easiest to use a magnetized screw driver.
- Unscrew display from display hinge/support bracket. There are two screws on each side.
    - Unscrew the bottom screws first.
    - Unscrew the top screws while holding onto the screen with your other hand so it doesn't fall.

To reassemble your device, follow these instructions in reverse order.