



Dell KB212-B Teardown

This will be a tear down of the Dell KB212-B keyboard. It will show how the keys and keyboard controller could be replaced.

Written By: Drew Miller



INTRODUCTION

This will be a tear down of the Dell KB212-B keyboard. It will show how the keys and keyboard controller could be replaced. In order to reassemble the keyboard, follow the steps in reverse.

Step 1 — Remove Screws from Back



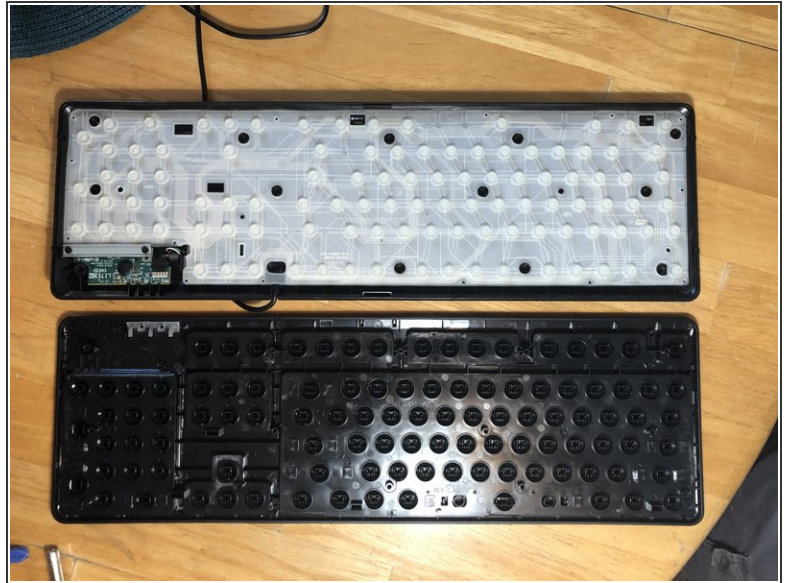
- Remove 12 screws from the back of the keyboard with a #2 Phillips screwdriver

Step 2 — Remove Screws from under Rubber Feet



- Remove the 2 rubber feet from the keyboard using a screw driver
- Remove the screws under the rubber feet using a #2 Phillips screw driver. There is 1 screw under each foot for a total of 2 screws.

Step 3 — Split the Plastic Case



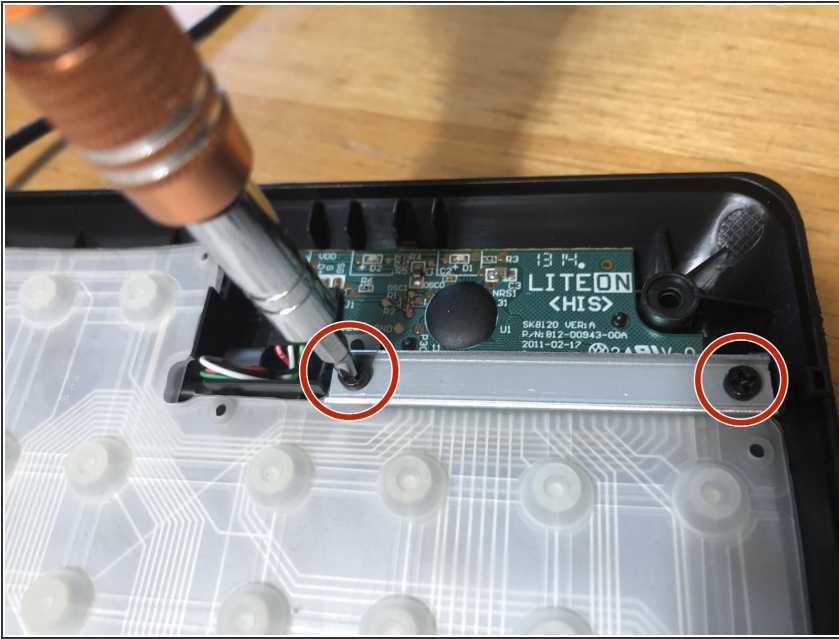
- Use a spudger to split the plastic shells by running it along the exterior of the plastic frame on all four sides of the keyboard shell. When the portion of the plastic shell is successfully unconnected, a clicking sound is heard.

Step 4 — Key Removal



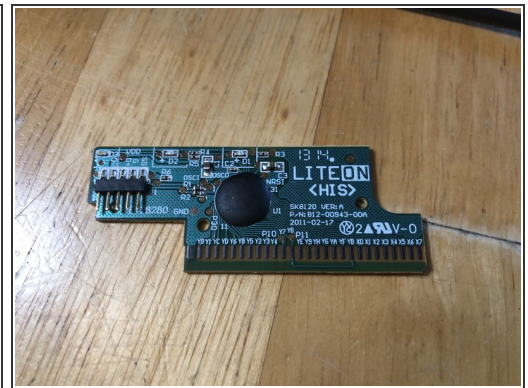
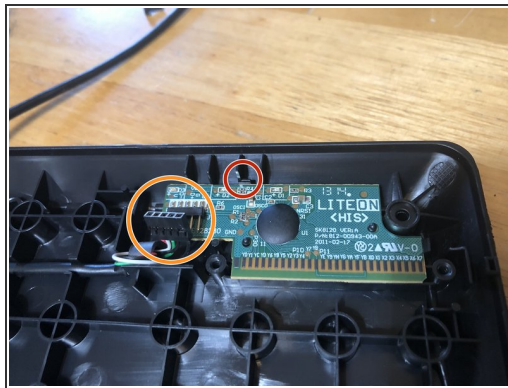
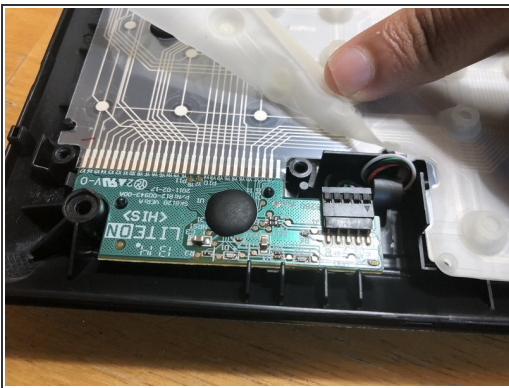
- To remove an individual key, take a small pair of pliers or tweezers and squeeze the two tabs while gently applying pressure until the key is popped out.

Step 5 — Accessing the controller PCB



- Remove the two Phillip screws and the thin piece of bracketing metal to access the controller PCB

Step 6 — Removing the Controller



- Pull back or remove the thin plastic membrane and the three translucent flexible PCBs to gain full access to the controller.
- Using a pair of tweezers, remove the USB wire header
- Gently press the plastic clip retaining the PCB and then pull on one of the PCB edges to remove.

To reassemble your device, follow these instructions in reverse order.