



# Dell Latitude 10-ST2e Battery Replacement

This guide will allow you to replace a faulty or damaged battery in the Dell Latitude 10-ST2e.

Written By: Vincent Hoffman



---

## INTRODUCTION

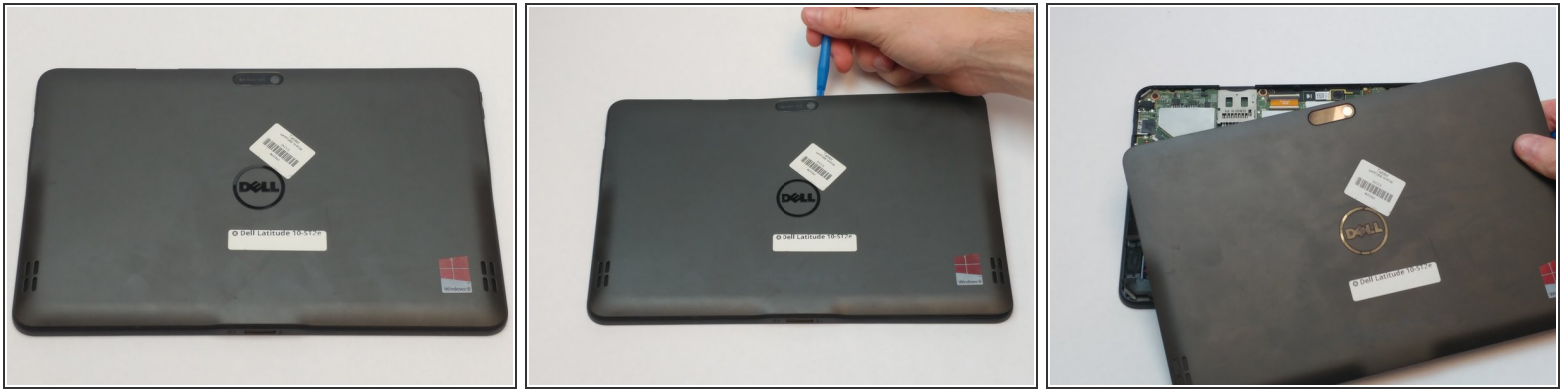
This guide will provide a step by step guide to remove the battery from the tablet. This is necessary for a device which has a faulty, broken, or a worn out battery.

---

### TOOLS:

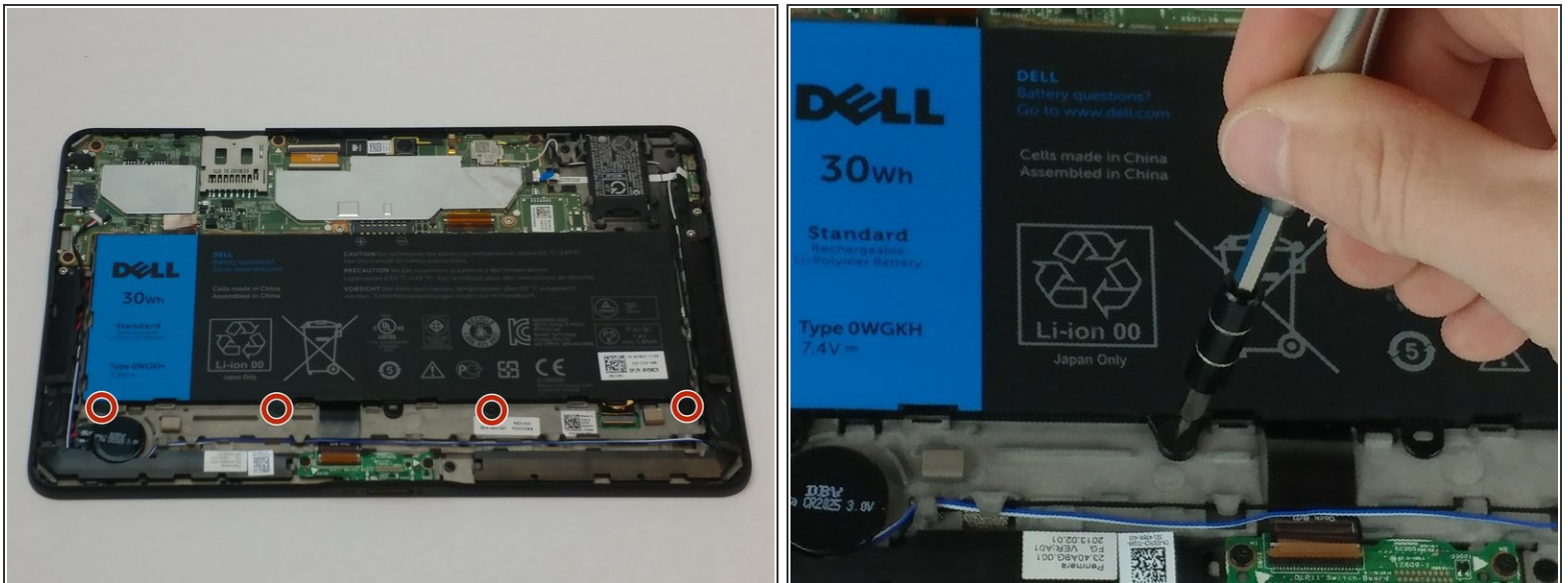
- [iFixit Opening Tools](#) (1)
  - [JIS #00 Screwdriver](#) (1)
-

## Step 1 — Battery



- Place tablet face-down on flat surface.
- Using the blue opening tool, separate the back plastic cover from the device. Start in a corner, and work your way around the tablet.

## Step 2



- Remove the four 7.0mm screws securing the battery with a JIS #00 screwdriver.

### Step 3



- With the blue opening tool, gently lift up and remove the battery from the tablet.
- ⚠ Do not damage, puncture, cut, or bend the battery, as this may cause bodily harm.

To reassemble your device, follow these instructions in reverse order.