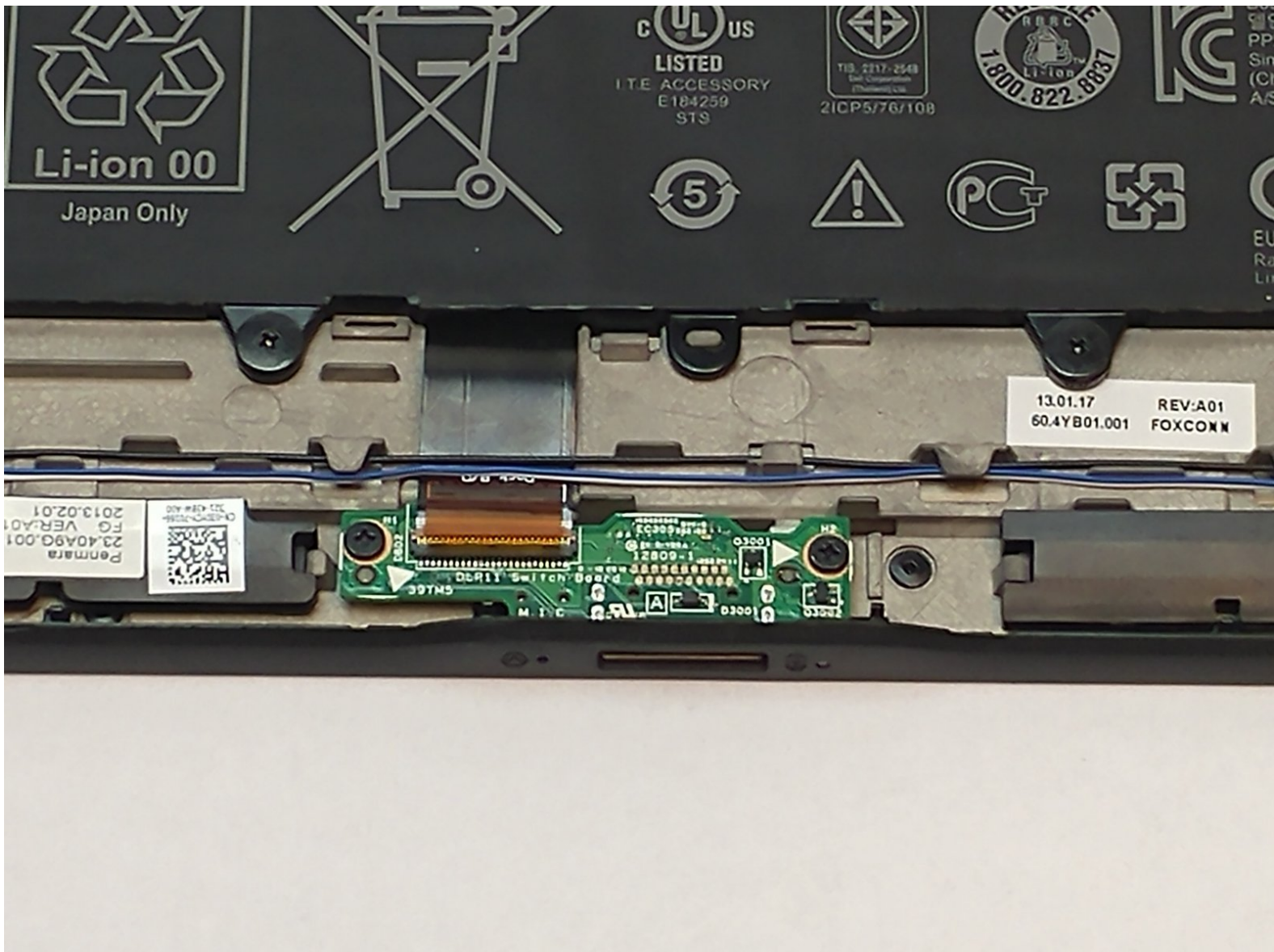




Dell Latitude 10-ST2e Charging Port Replacement

This guide will show you how to replace the charging port on the Dell Latitude 10-ST2e

Written By: Khawja



INTRODUCTION

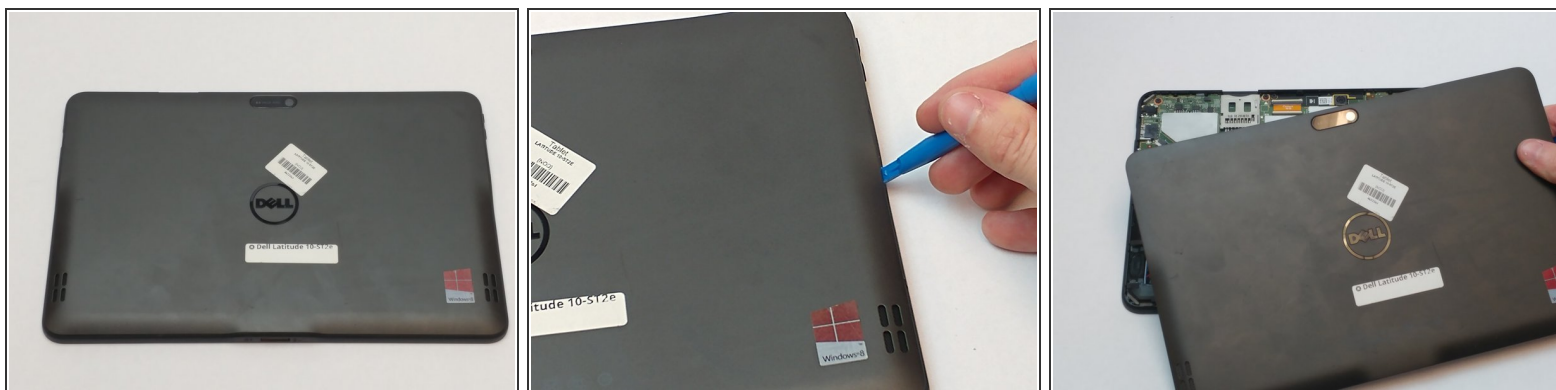
We're going to teach you how to remove the charging port.



TOOLS:

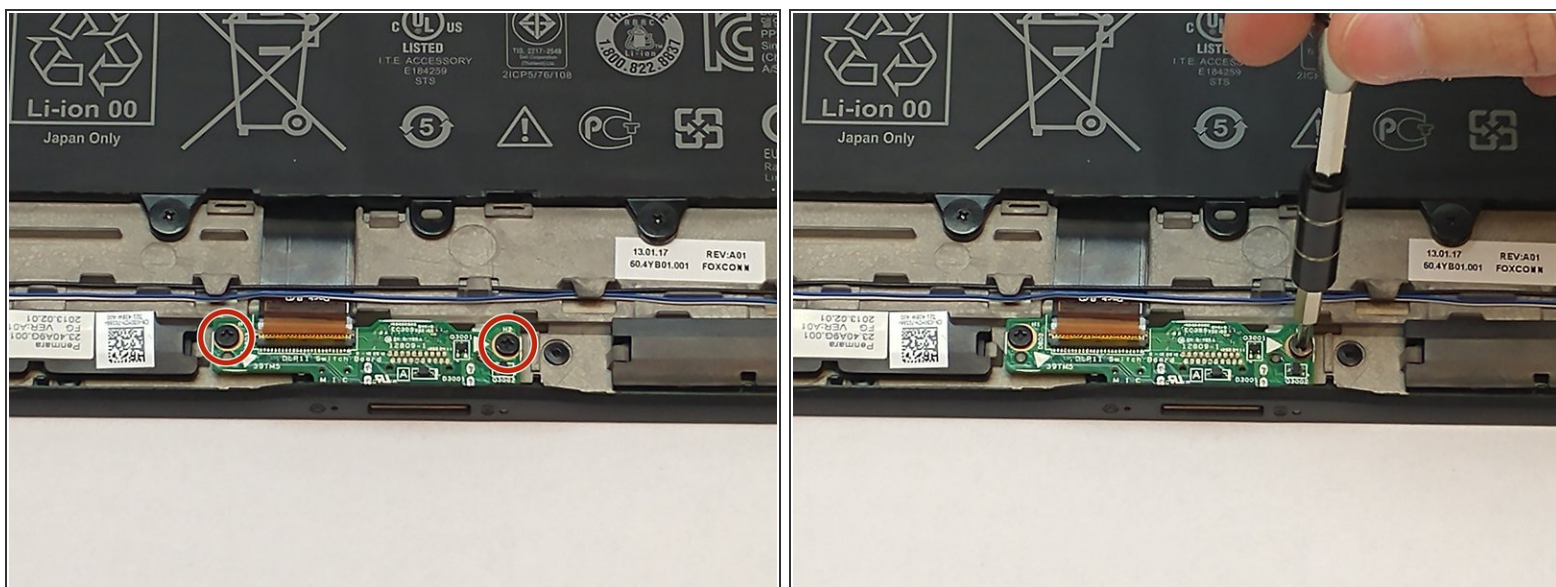
- [JIS #00 Screwdriver](#) (1)
 - [Tweezers](#) (1)
 - [iFixit Opening Tools](#) (1)
-

Step 1 — Charging Port



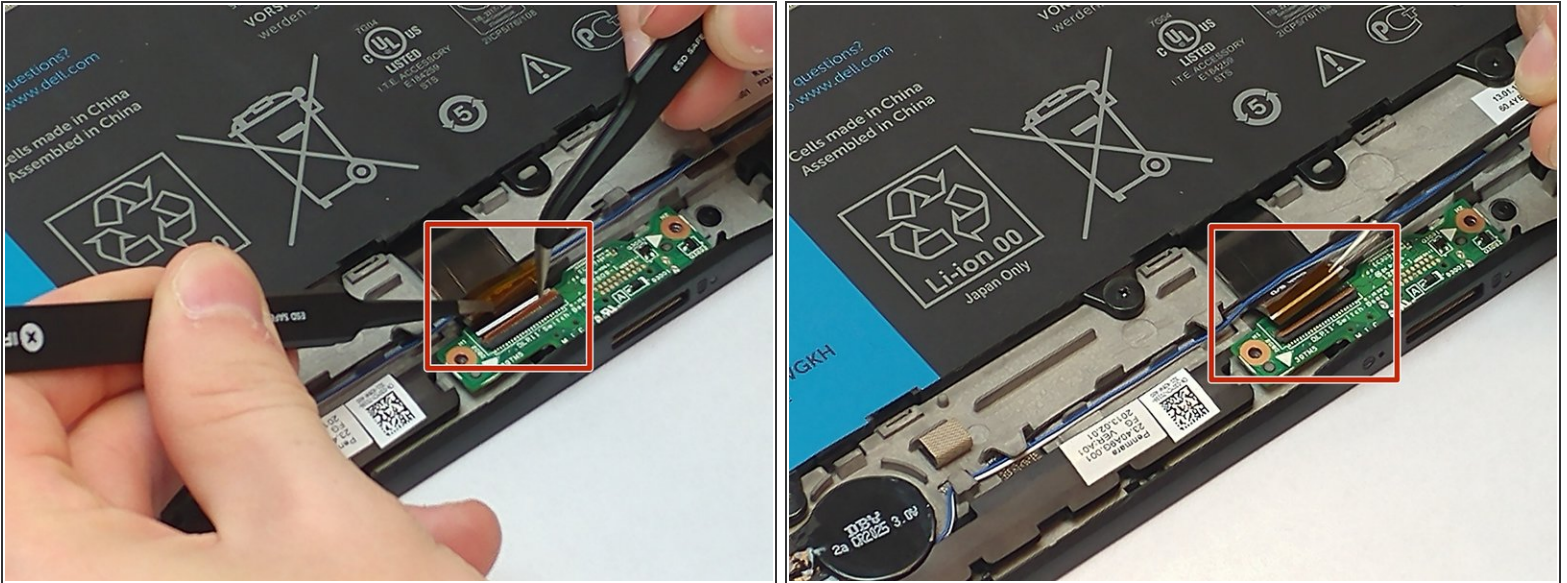
- Remove the backplate of the tablet by using the plastic opening tool to lift it up.

Step 2



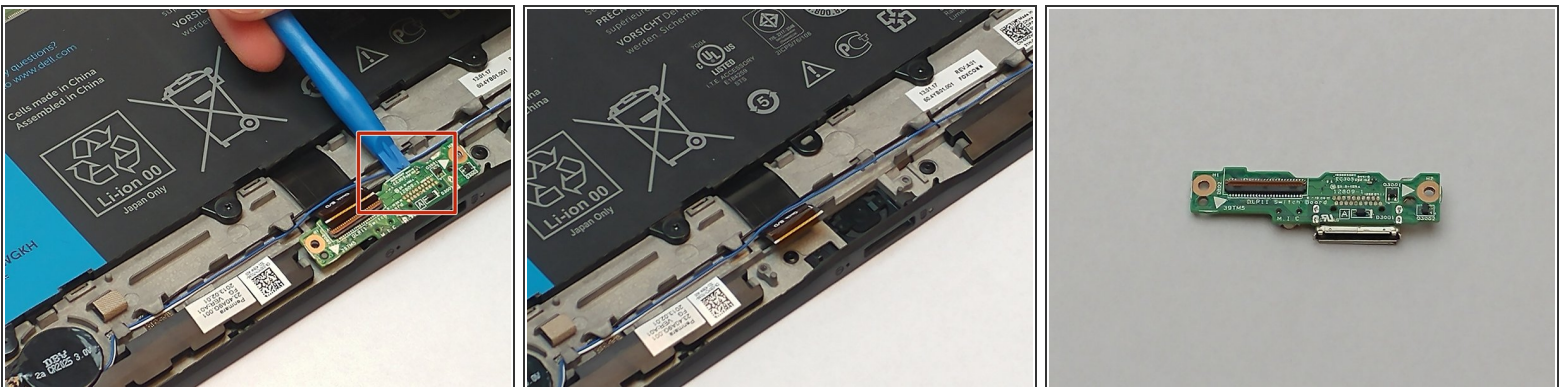
- Using a JIS #00 screwdriver, remove the two 4.0mm screws securing it to the motherboard.

Step 3



- Lift up the orange clamp connecting the black DOC B/D cable to the charging board.

Step 4



- Place the opening tool underneath the charging board, lift up, and slide it out the charging port, along with its board.

To reassemble your device, follow these instructions in reverse order.