



Dell Latitude 10-ST2e Front Facing Camera Replacement

This guide will show you how to replace the front facing camera on the Dell Latitude 10-ST2e.

Written By: Khawja



INTRODUCTION

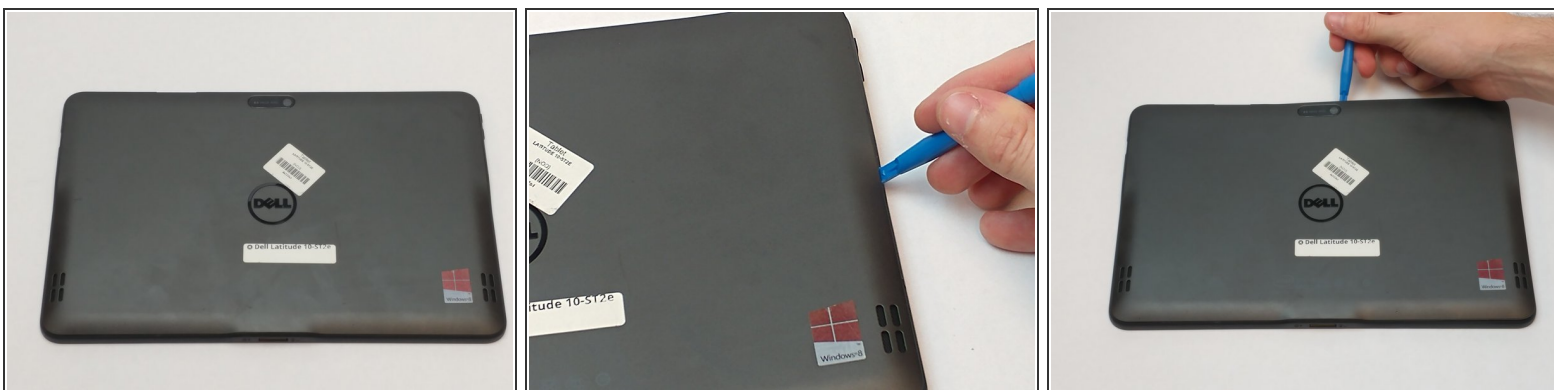
We're going to teach you how to remove the front facing camera from the Dell Latitude 10-ST2e.



TOOLS:

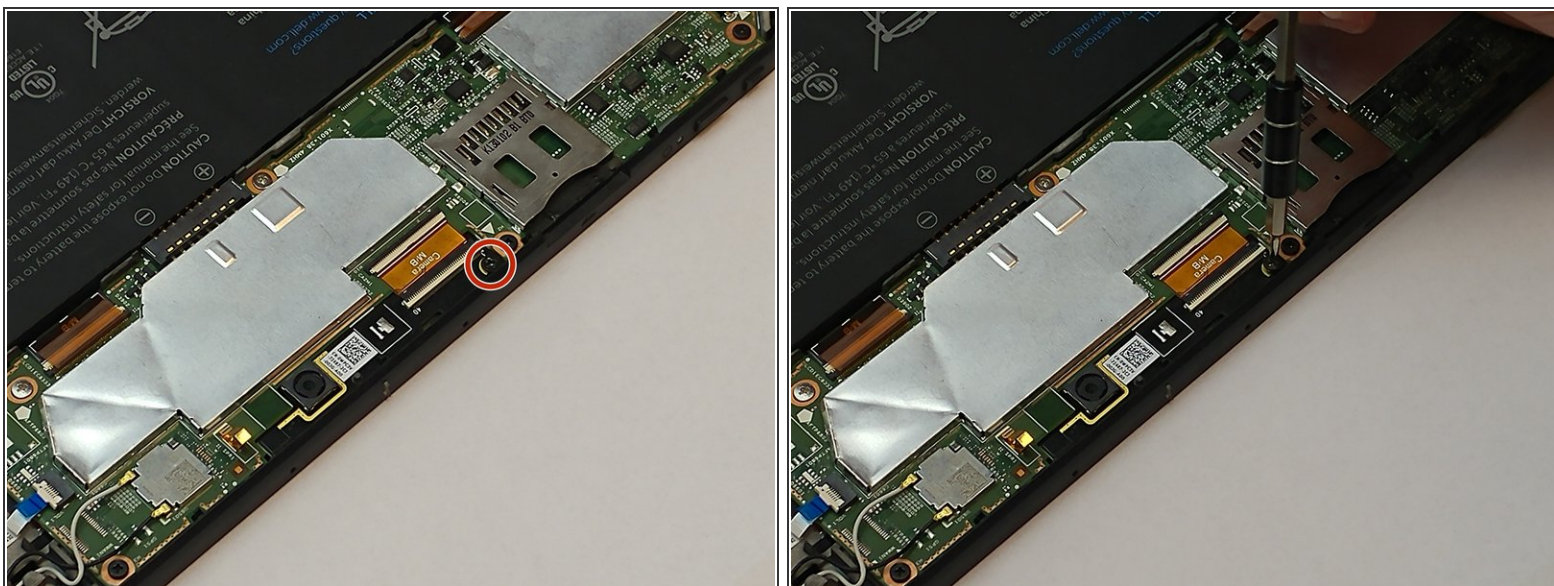
- [JIS #00 Screwdriver](#) (1)
 - [Tweezers](#) (1)
 - [iFixit Opening Tools](#) (1)
-

Step 1 — Front Facing Camera



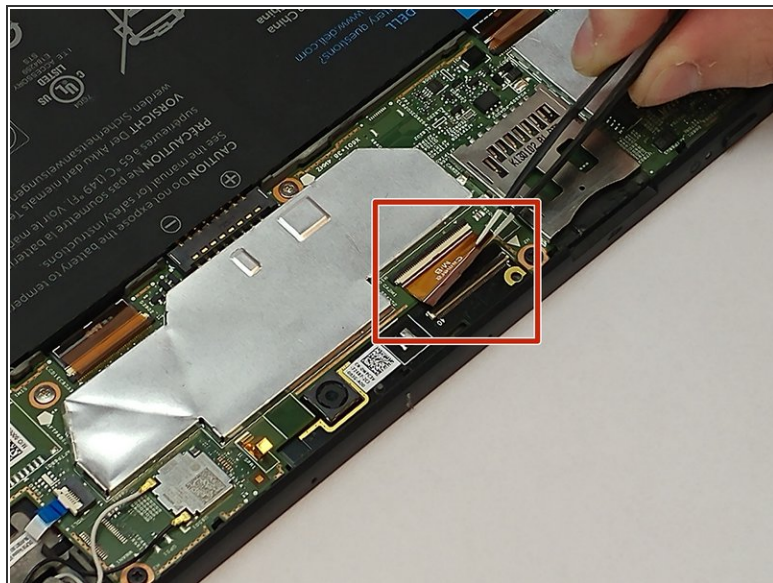
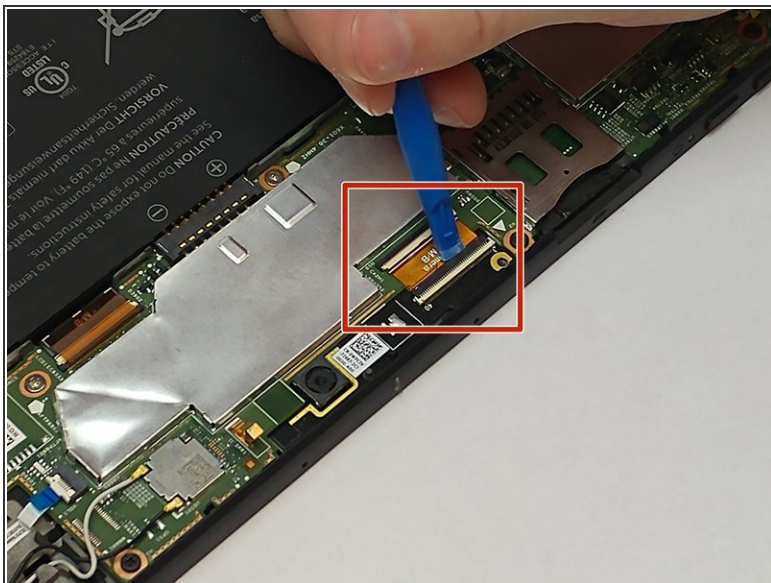
- Using the blue opening tool, separate the back plastic cover from the device. Start in a corner, and work your way around the tablet.

Step 2



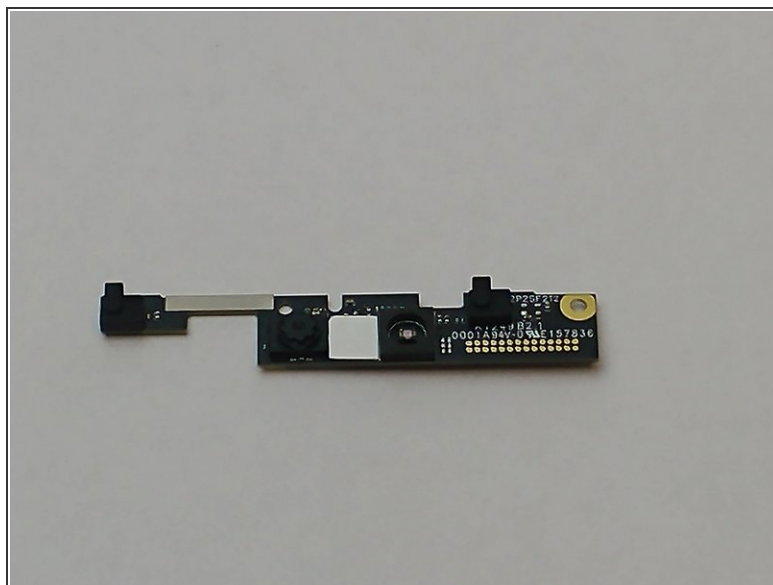
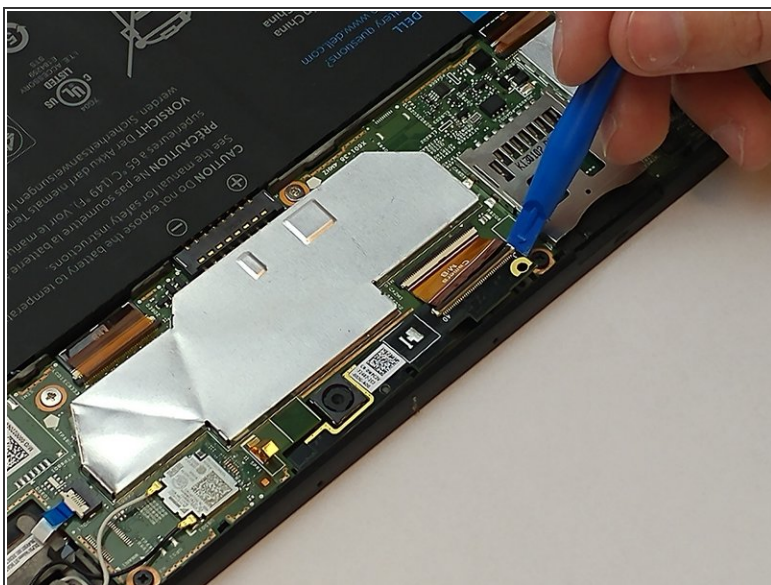
- Using a JIS #00 screwdriver, remove the one 4.0mm screw securing the camera to the motherboard.

Step 3



- Use an opening tool to release the black clamp. With the tweezers gently lift and disconnect the motherboard from the camera.

Step 4



- Gently lift up the camera using the plastic opening tool and remove it from the tablet.

To reassemble your device, follow these instructions in reverse order.