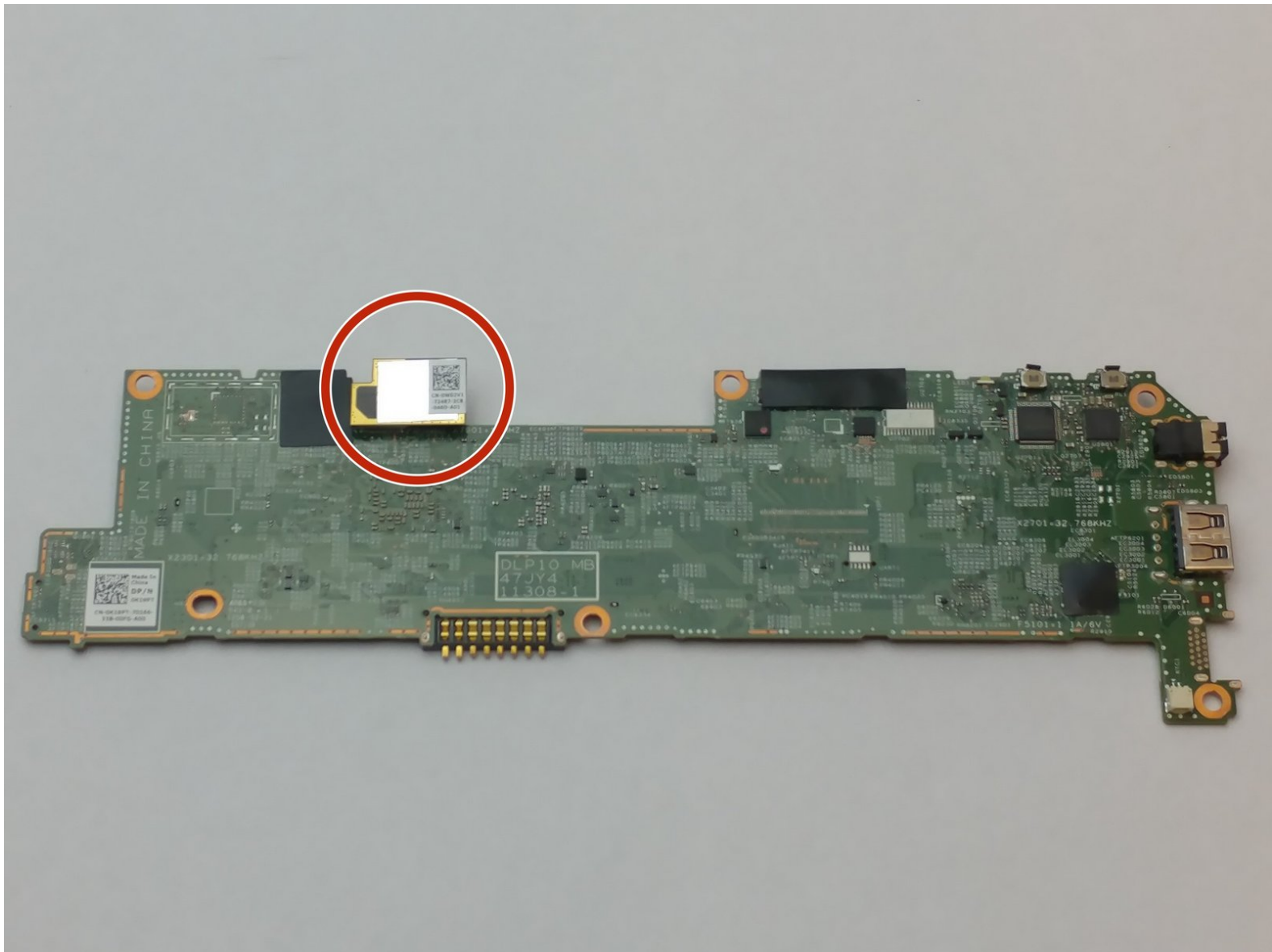




Dell Latitude 10-ST2e Rear Facing Camera Replacement

This guide will demonstrate how to remove and replace the rear facing camera. The removal of other components is necessary, caution is advised.

Written By: Jan Camacho



INTRODUCTION

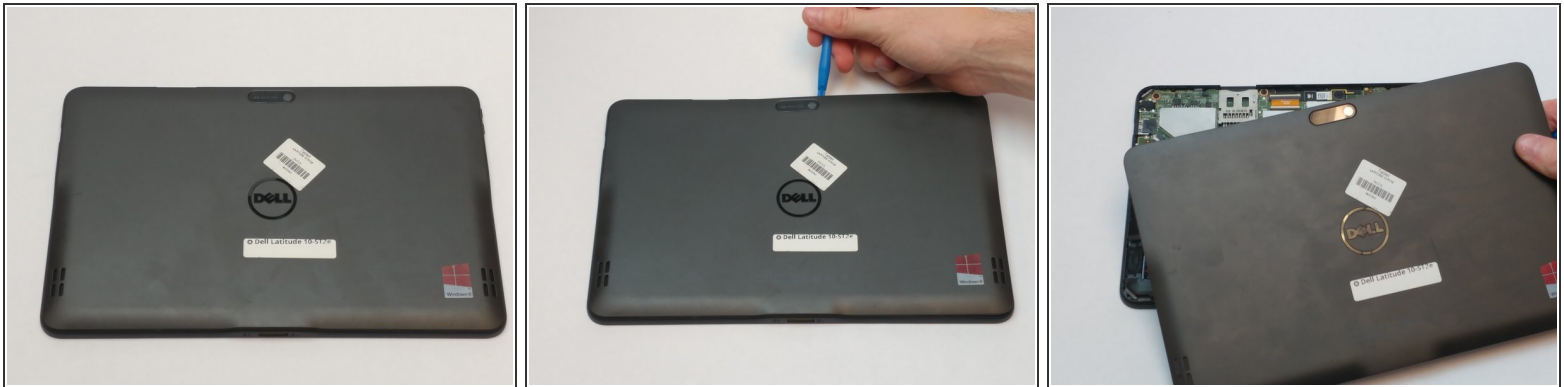
We're going to teach you how to remove the rear facing camera from the Dell Latitude 10-ST2e.



TOOLS:

- [JIS #00 Screwdriver](#) (1)
 - [Tweezers](#) (1)
 - [iFixit Opening Tools](#) (1)
-

Step 1 — Motherboard



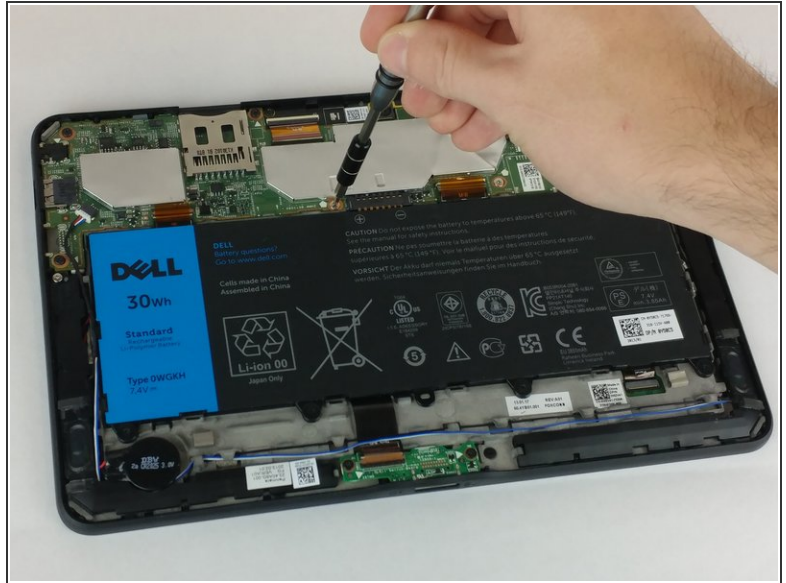
- Using the blue opening tool, separate the back plastic cover from the device. Start in a corner, and work your way around the tablet.

Step 2



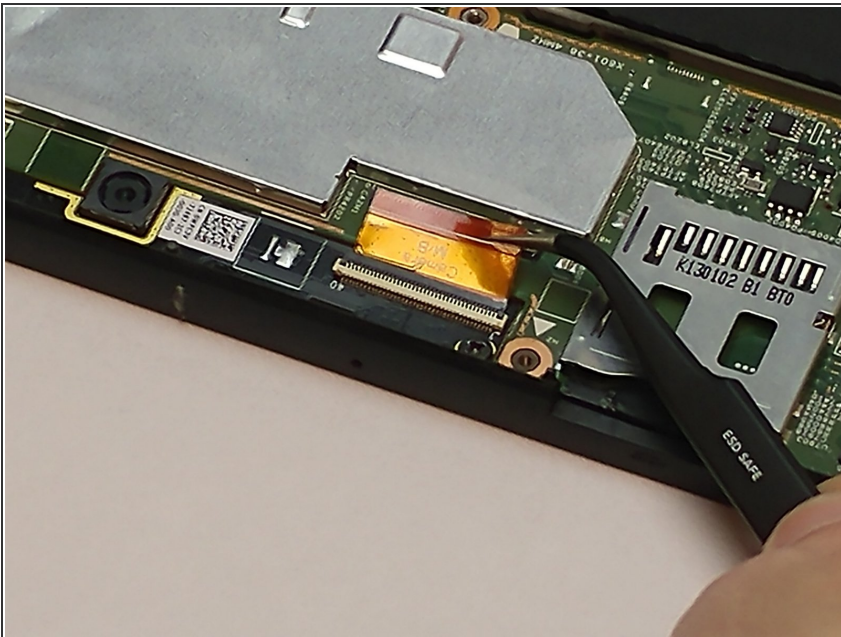
- Remove the four 4.0mm black screws on the perimeter of the device using a JIS #00 screwdriver

Step 3



- Remove the two 4.0mm silver screws using the JIS #00 screwdriver.

Step 4



- Disconnect the connection of the front camera clamp by releasing the clamp with tweezers.
- Pull up on the connection from the motherboard.

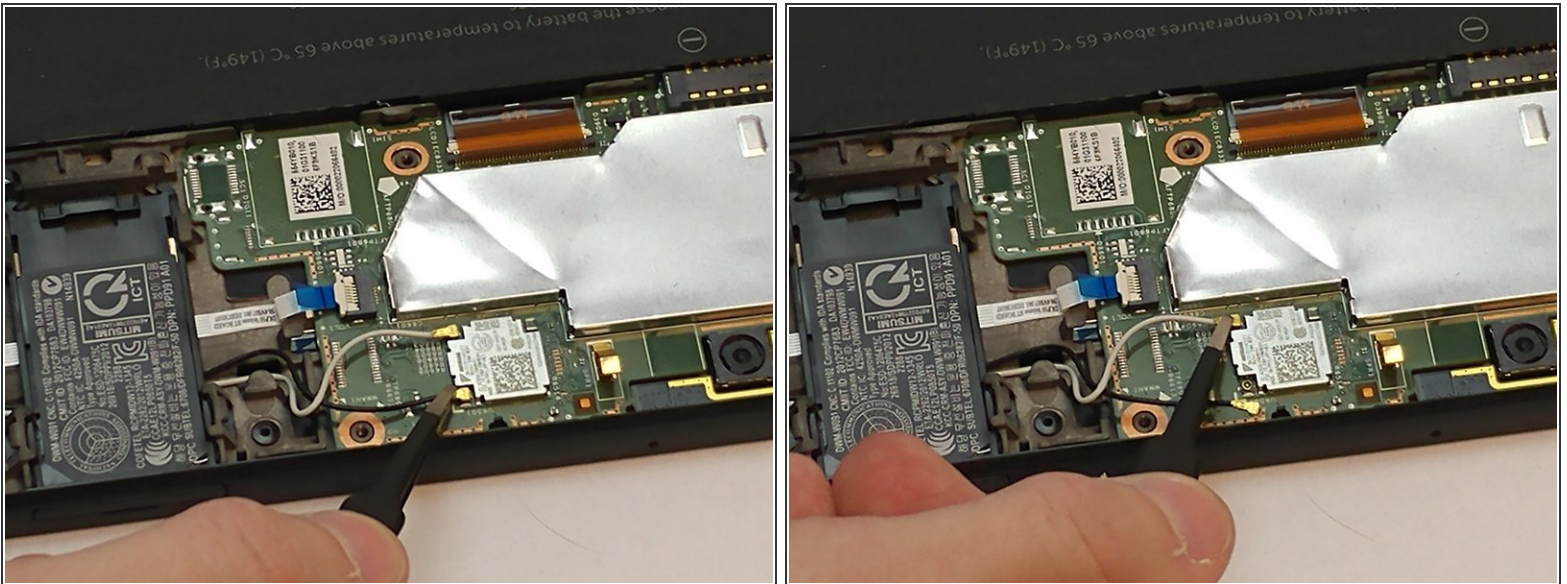
⚠ Avoid damaging the connection.

Step 5



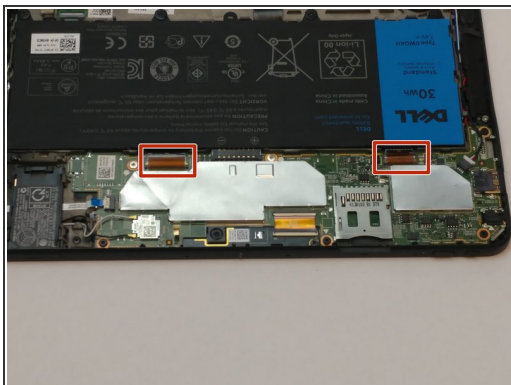
- Using an opening tool, lift upwards on the white clamp, and pull the blue tab out of the connection with tweezers.

Step 6



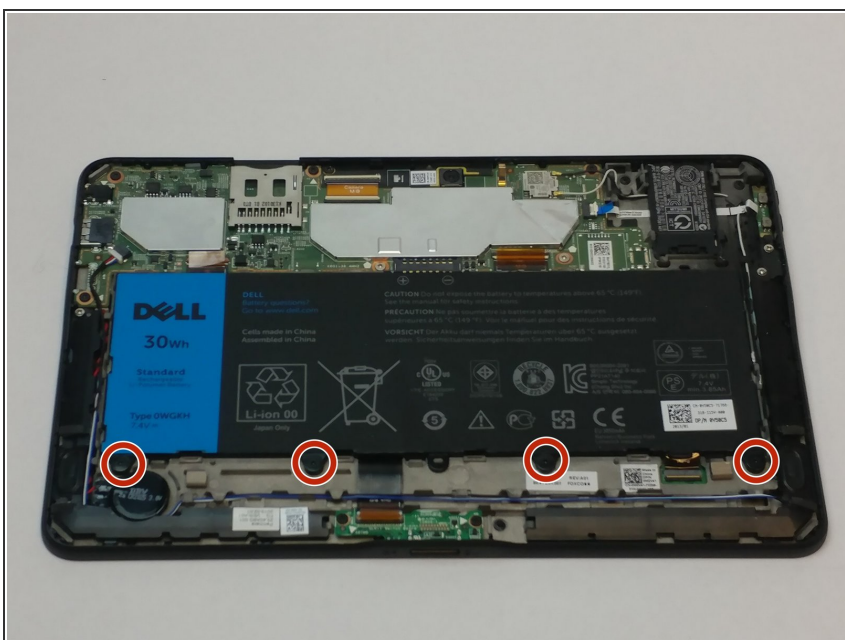
- Using tweezers, disconnect the white and black wires from the bottom of the motherboard.
- Pull upwards while holding the brass connections. Do not pull on the wires.

Step 7



- Disconnect the two clamps, one orange and one white, using tweezers next to the battery.

Step 8



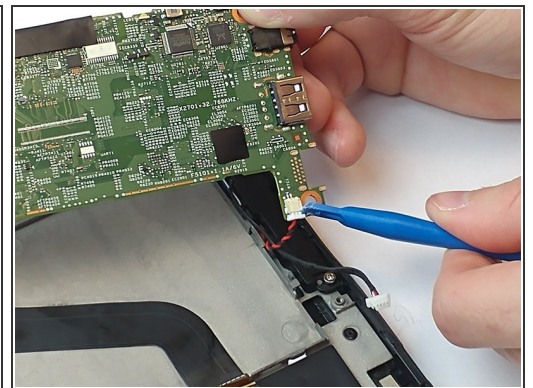
- Remove the four 7.0mm screws securing the battery with a JIS #00 screwdriver.

Step 9



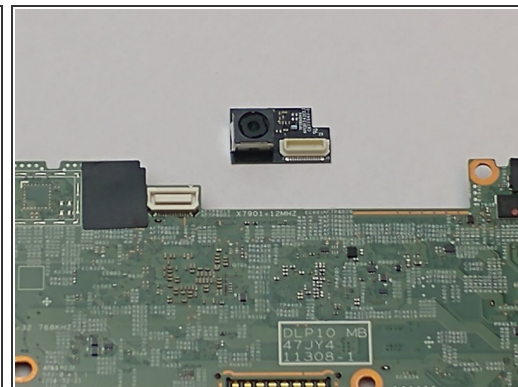
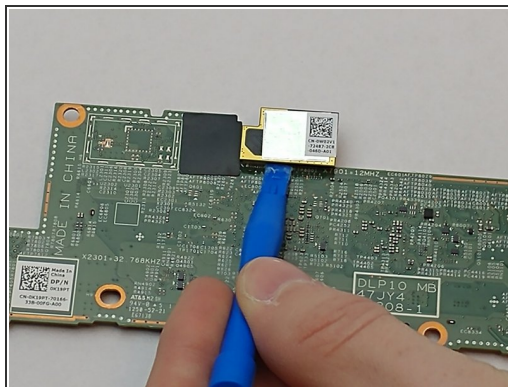
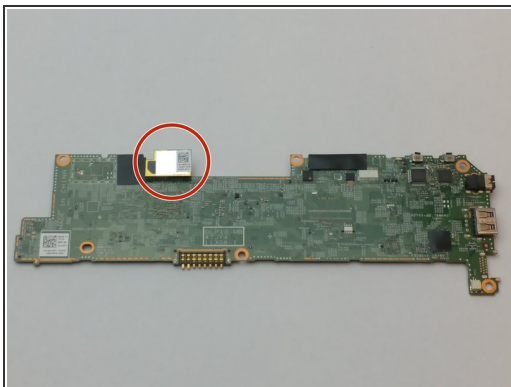
- With the blue opening tool, gently lift up and remove the battery from the tablet.
- ⚠ Do not damage, puncture, cut, or bend the battery, as this may cause bodily harm.

Step 10



- Rotate the motherboard upwards from the tablet using tweezers, but do not remove completely from the device. As you lift, disconnect the black and red wire located underneath the motherboard before removing it completely from the tablet.

Step 11 — Rear Facing Camera



- Once the motherboard is removed, place on a flat surface facing down. Use the plastic opening tool to disconnect and remove the camera from the motherboard.

To reassemble your device, follow these instructions in reverse order.