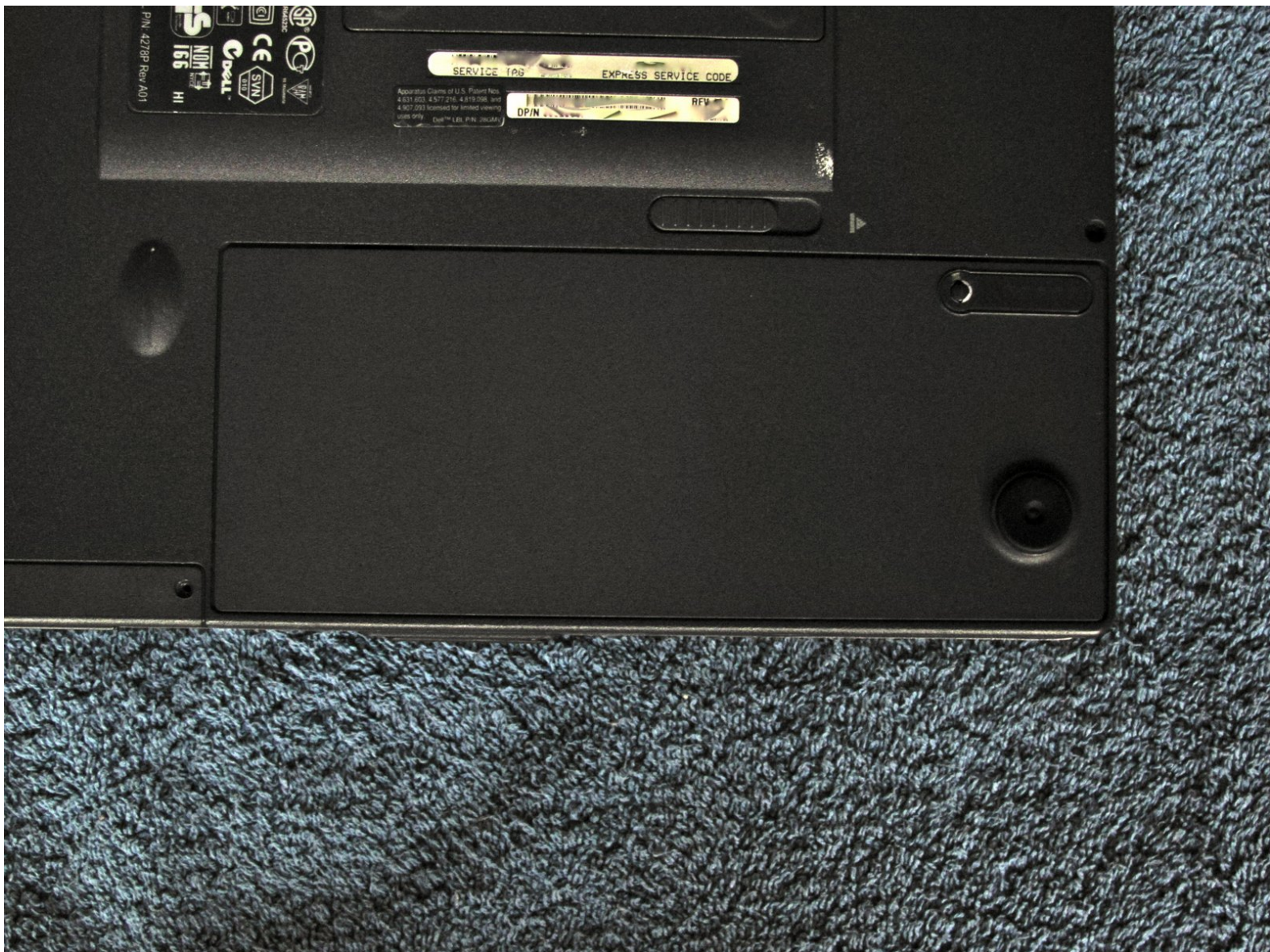




Dell Latitude CS Battery Replacement

This guide will go through the installation/removal of the battery on the Dell Latitude CS.

Written By: Axuak

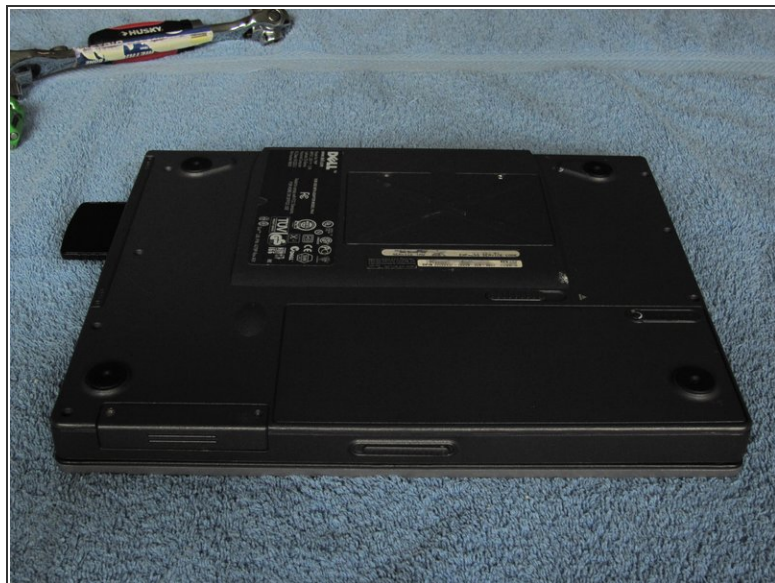




PARTS:

- [Dell Latitude CS Battery](#) (1)
-

Step 1 — Battery



- Flip over the laptop.

Step 2



- Pull the switch with the arrow next to it in the direction of the arrow.
- You should be able to see the battery extrude from the case.
- Pull, gripping onto the newly extruded area on the battery, removing it.
- Add the new battery in its place and you're done :)

Flip laptop over and enjoy your newly acquired battery runtime!