



# Dell Latitude D430 Wireless Adapter Replacement

Replace the wireless adapter in the Dell Latitude D430.

Written By: Parker Wiley



---

## INTRODUCTION

The wireless adapter allows you to connect to local networks. This part is important because it allows you to use the internet. If you do not want to be tethered to a cable, it is important to replace this component if it does not function correctly.



### TOOLS:

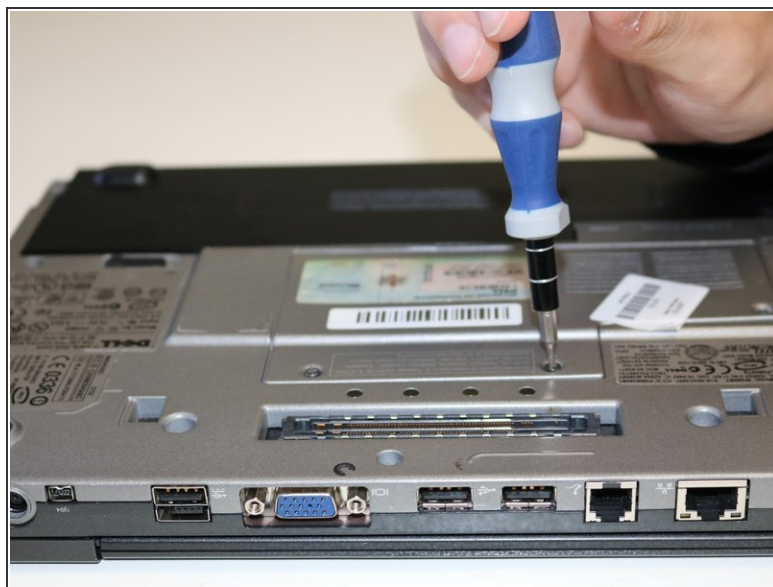
- [Phillips #00 Screwdriver](#) (1)
-

## Step 1 — Wireless Adapter



- Flip the laptop so you are able to see the bottom.

## Step 2



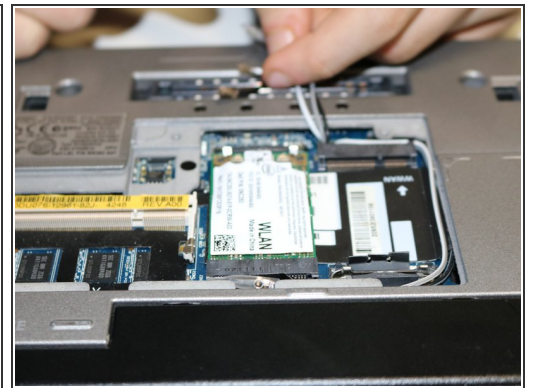
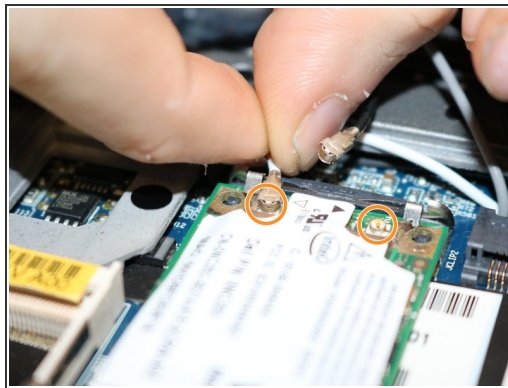
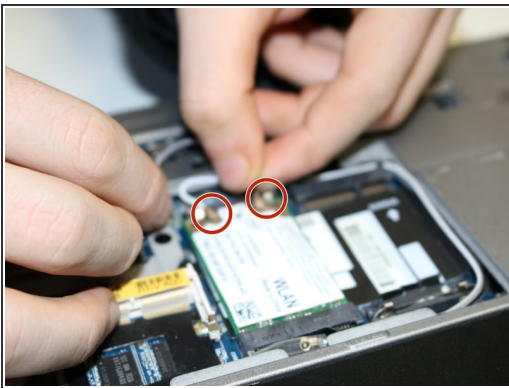
- Use a Phillips #00 screwdriver to remove the three screws that secure the small "L" shaped backplate.

### Step 3



- Once all 3 screws have been removed, carefully remove the panel by grabbing the edges, and pulling up.

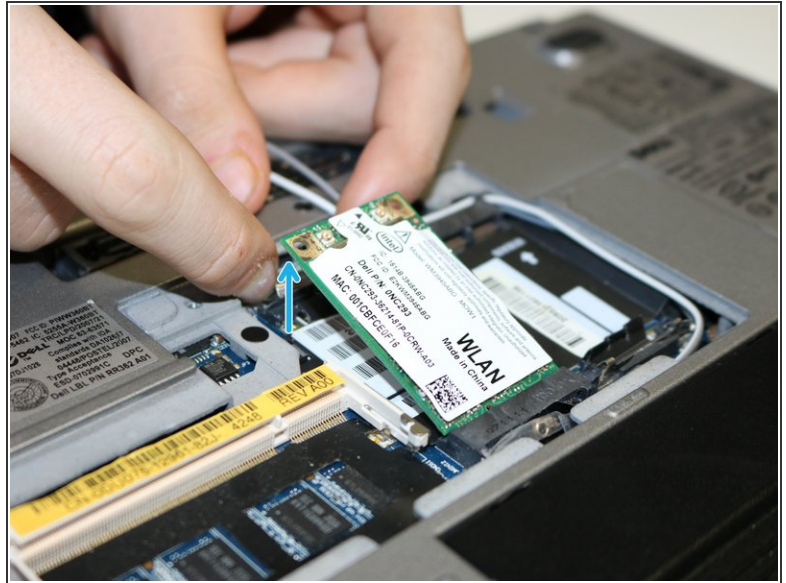
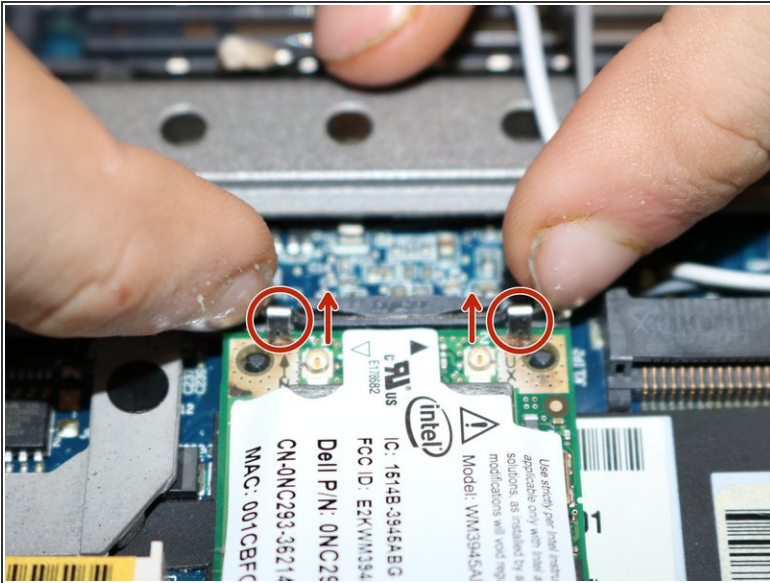
### Step 4



- Identify the two pins connecting the wireless adapter to the motherboard. (The wireless adapter will say WLAN on it.)
- Carefully pull up on each pin and remove them from the wireless adapter.
- ⓘ Note that there are no wires/cables connecting the wireless adapter to the motherboard.

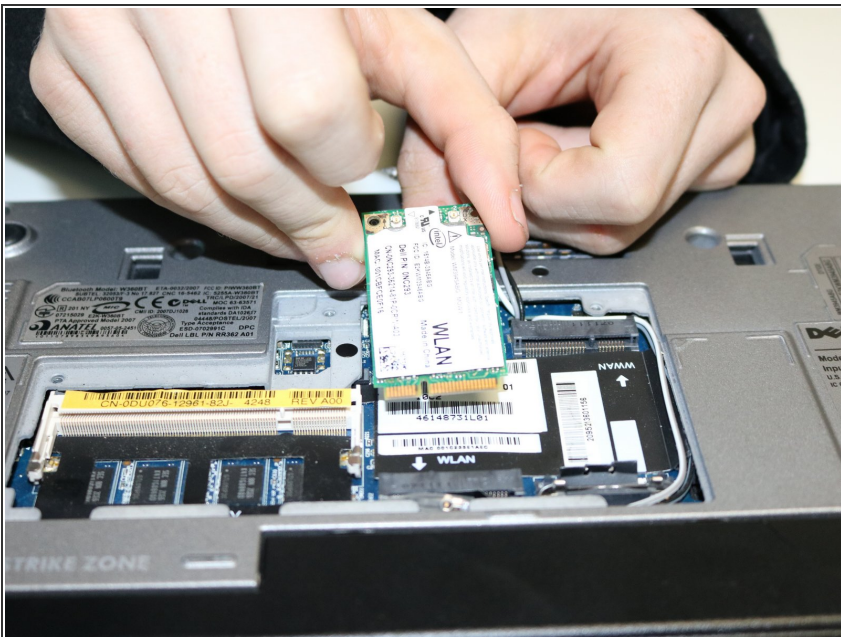


## Step 5



- Pull back on the two metal tabs holding the wireless adapter down.
- ① After the two metal tabs are pulled, the card will pop up.

## Step 6



- Pull the wireless adapter out away from where it was connected.

To reassemble your device, follow these instructions in reverse order.

This document was generated on 2020-01-02 06:37:43 AM (MST).

