



Dell Latitude D530 Battery Replacement

Batteries can die after a length of time. This guide will help you replace your battery.

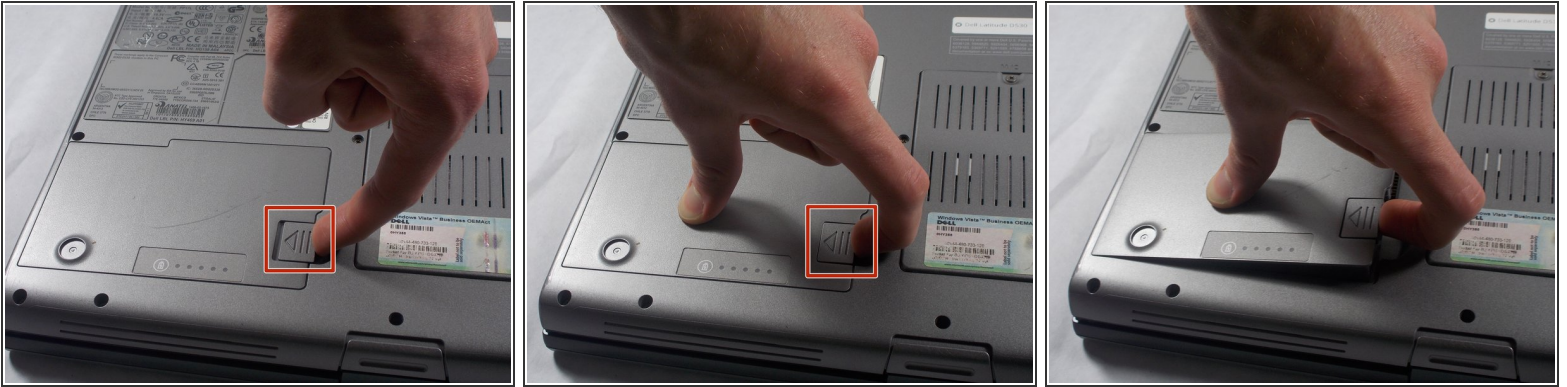
Written By: Kyle Cabral



INTRODUCTION

The battery is extremely important on whether a laptop turns on or not. This repair guide is a simple set of instructions to replace your damaged or non-working battery. The goal is to get the laptop to turn on with a working battery successfully.

Step 1 — Battery



- The battery will be located on the bottom of the laptop.
- To remove the battery, push the release button in the direction that the arrow indicates.

Step 2



- Pull out the battery.

To reassemble your device, follow these instructions in reverse order.