



# Dell Latitude D530 CD ROM Replacement

CD ROM's Drive can break and wear down over time from simply using them. This guide will walk you through how to replace the CD ROM Drive.

Written By: Kyle Cabral



## INTRODUCTION

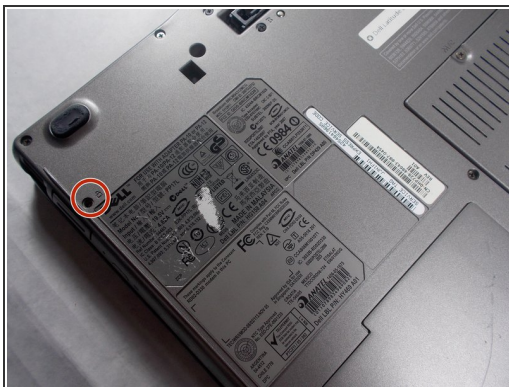
A CD-ROM Drive is a necessity when trying to use a CD or DVD on a laptop. It is important to know that if there is difficulty among the CD-ROM Drive and you would like to replace it , a screw driver would be handy. This repair guide would allow you to replace your CD-ROM Drive and successfully be able to use it.



### TOOLS:

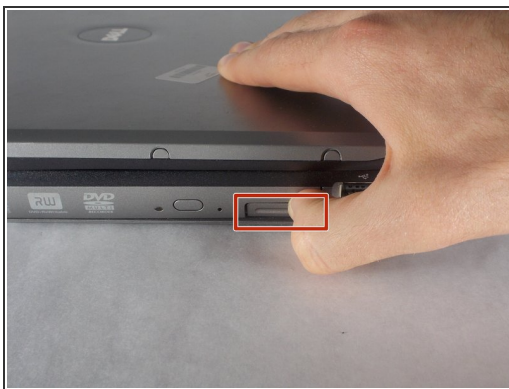
- [Phillips #1 Screwdriver](#) (1)
-

## Step 1 — CD ROM Drive



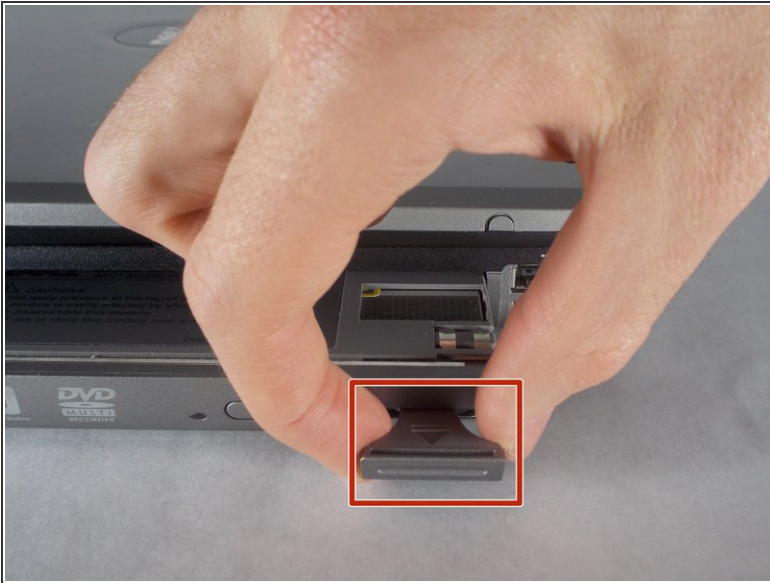
- The CD ROM Drive is located on the right side of the laptop.
- Use the Phillips #1 to unscrew the 6mm lock screw. The screw is located underneath the CD-ROM Drive with a lock symbol on it.

## Step 2



- remove the CD ROM Drive: push the indicated button in towards the laptop and release. The button will pop out.

### Step 3



- Remove the CD ROM Drive: Pull on the now released button and the CD ROM Drive will come out.

To reassemble your device, follow these instructions in reverse order.