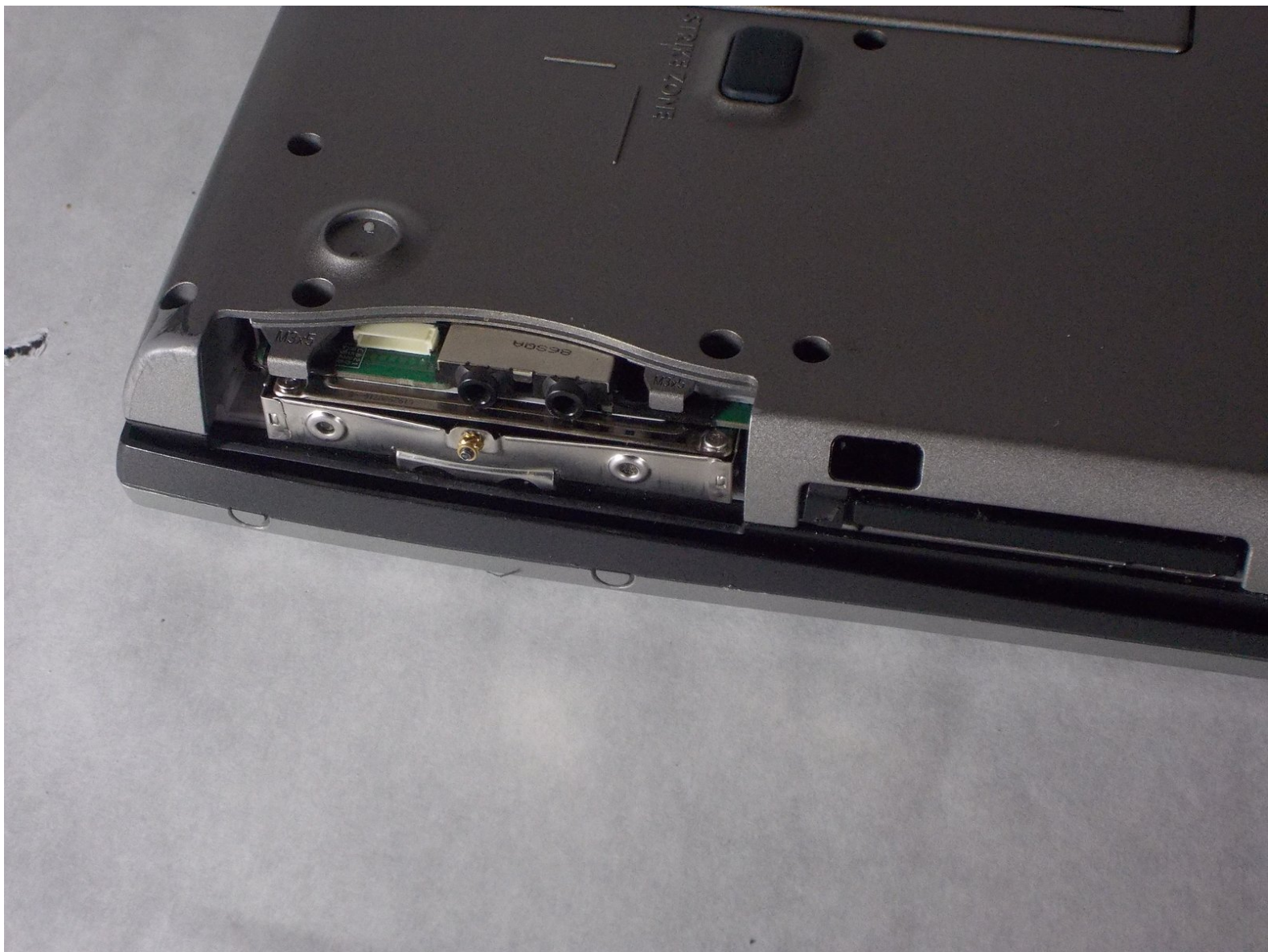




Dell Latitude D530 Hard Drive Replacement

Although it is rare, in some situations, you may need to replace your hard drive due to age or damage. This guide will walk you through replacing the it.

Written By: Kyle Cabral



INTRODUCTION

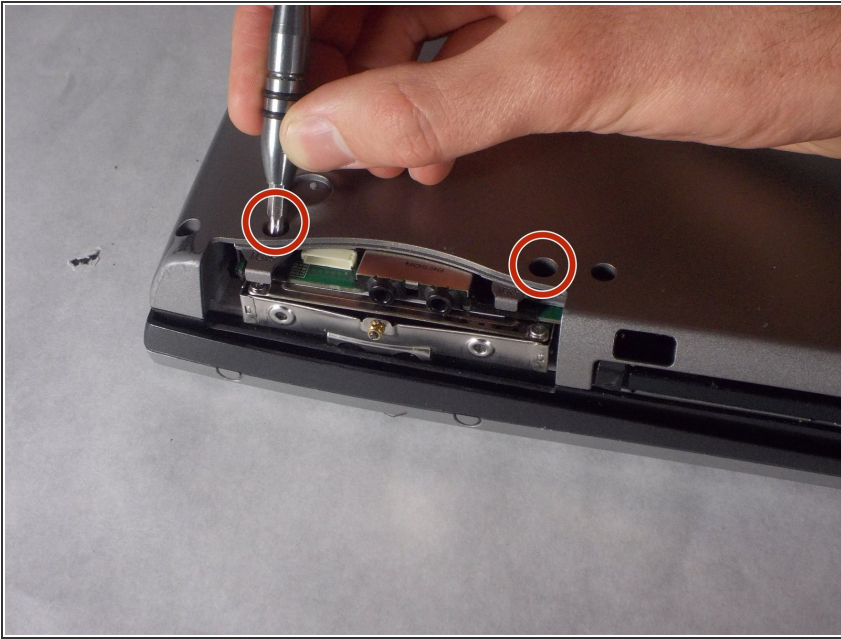
You can tell if your hard drive is broken if you get a 'hard drive missing/not detected' error upon computer startup. If this is the case, you need to buy a hard drive and replace the old one with it. Most hard drives can withstand being handled, but it is good to be careful with it nonetheless.



TOOLS:

- [Phillips #1 Screwdriver](#) (1)
-

Step 1 — Hard Drive



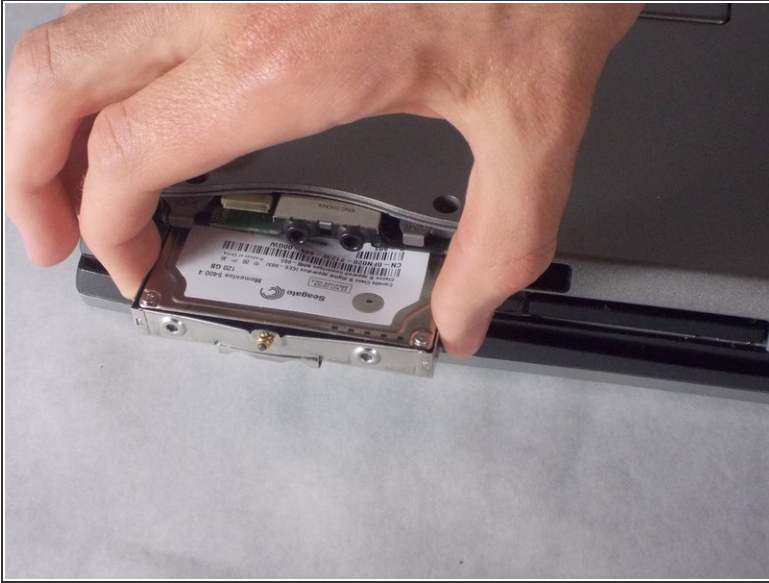
- The hard drive will be located in the side of the laptop.
- Unscrew the two bottom 6mm screws using Phillips #1.

Step 2



- Remove cover to hard drive bay.

Step 3



- Carefully pull hard drive out.

To reassemble your device, follow these instructions in reverse order.