



# Dell Latitude D600 RAM (Main Memory) Replacement

This guide will show how to add RAM or replace existing RAM on the Latitude D600

Written By: Joseph



---

## INTRODUCTION

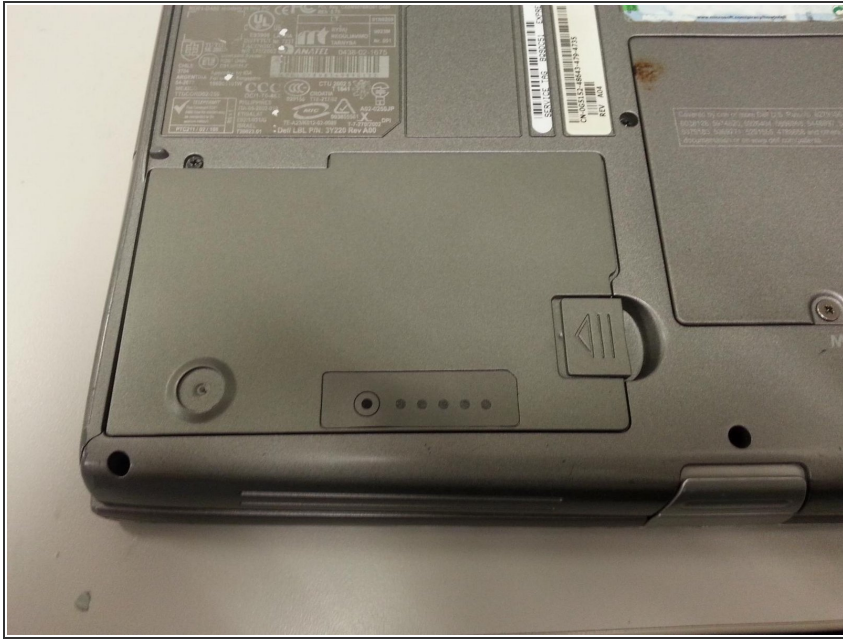
This guide will show how to add RAM or replace existing RAM on the Latitude D600

---

### TOOLS:

- [Screwdriver](#) (1)
-

## Step 1 — Battery



- Find the battery

## Step 2



- Pull the tab to release the battery

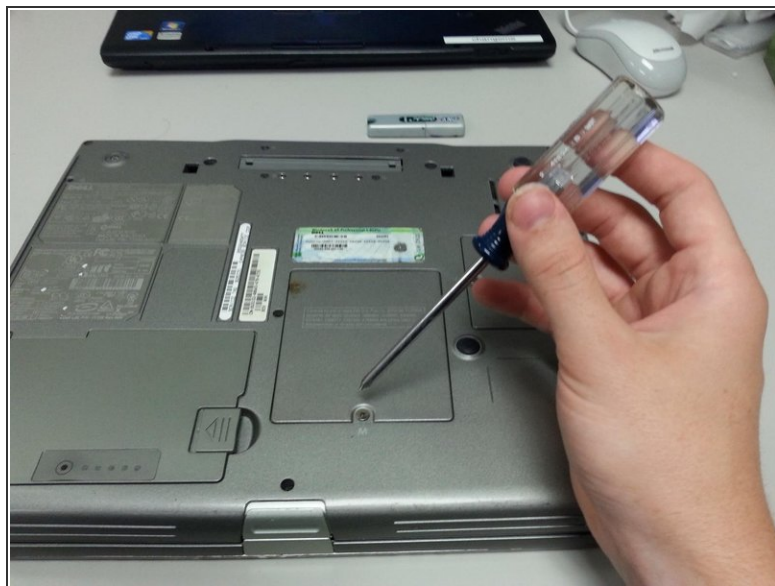


## Step 3



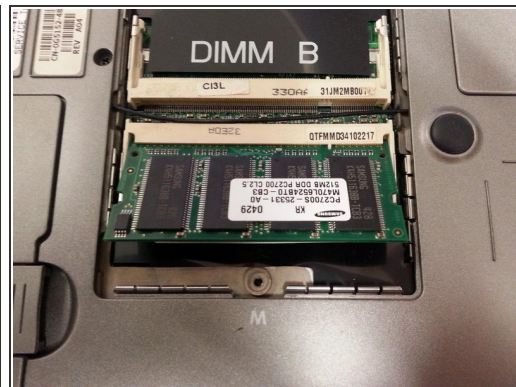
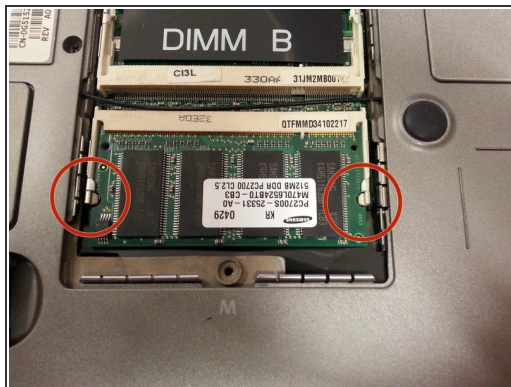
- Pull the battery out

## Step 4 — RAM (Main Memory)



- Find the panel underneath the microsoft product key sticker, the panel is labeled with an M
- Unscrew the single screw above the M

## Step 5



- Pull off the panel to reveal the RAM
- RAM is held in by two tabs, pull each tab to the side and the RAM will pop up

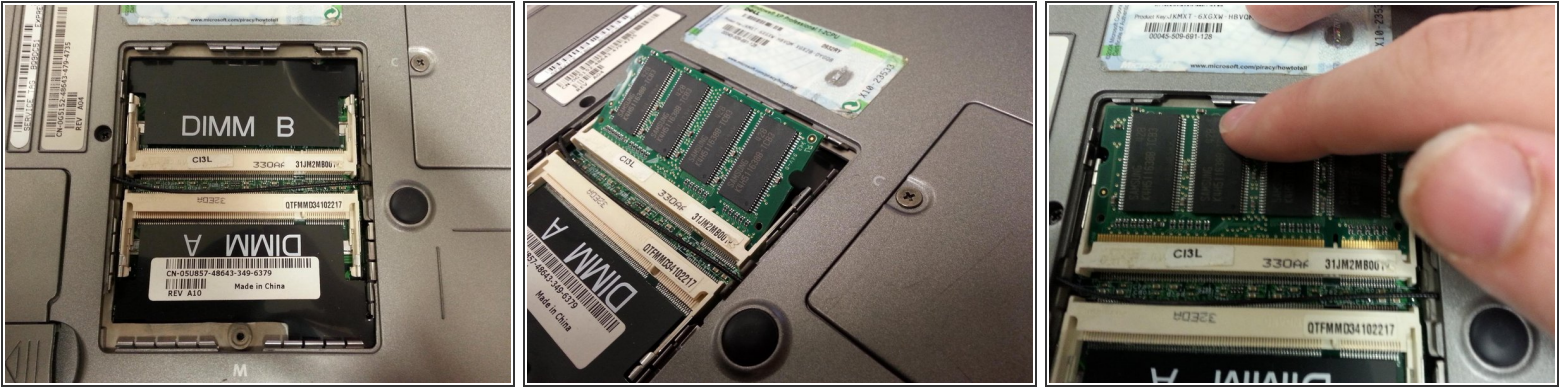
## Step 6



- Once the RAM is popped up, slowly pull it out of the slot

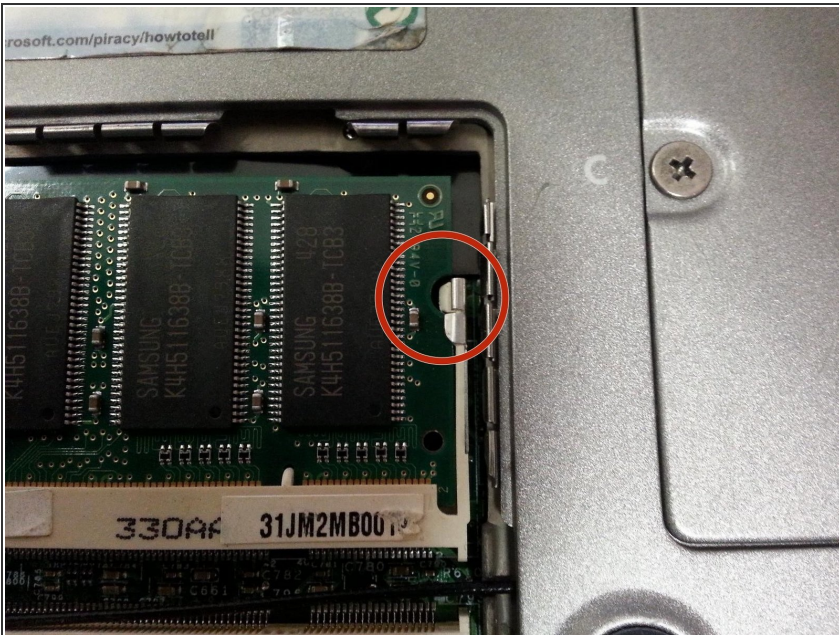


## Step 7



- To add or replace RAM, place the memory into the slot at an angle
- Make sure you line it up correctly
- If it is in correctly it should stay up at an angle by itself
- Then push down in the middle until it clicks into place

## Step 8



- The RAM should be secured by the tabs where the two semi circles are on the RAM
- If it is not secure, just gently pull it out and try again, use the images to help you out

To reassemble your device, follow these instructions in reverse order.

This document was generated on 2019-09-19 01:35:56 AM (MST).

