



Dell Latitude D610 Modem Replacement

Replace the modem of this device.

Written By: Jose Chavez



INTRODUCTION

Replacing a defective modem is fairly simple and will help your computer in connecting to networks requiring a modem.



TOOLS:

- [Phillips #1 Screwdriver](#) (1)
-

Step 1 — Battery



- Remove the 3.9 mm Phillips #1 screw from the battery compartment.

Step 2



- Locate the laptop battery release button lock
- Push the battery release in the direction of the arrow, and pull upward.

Step 3



- Remove the battery from its compartment.

Step 4 — Modem



- Remove the 3.9mm screw with a Philips #1 screwdriver containing the modem.

Step 5



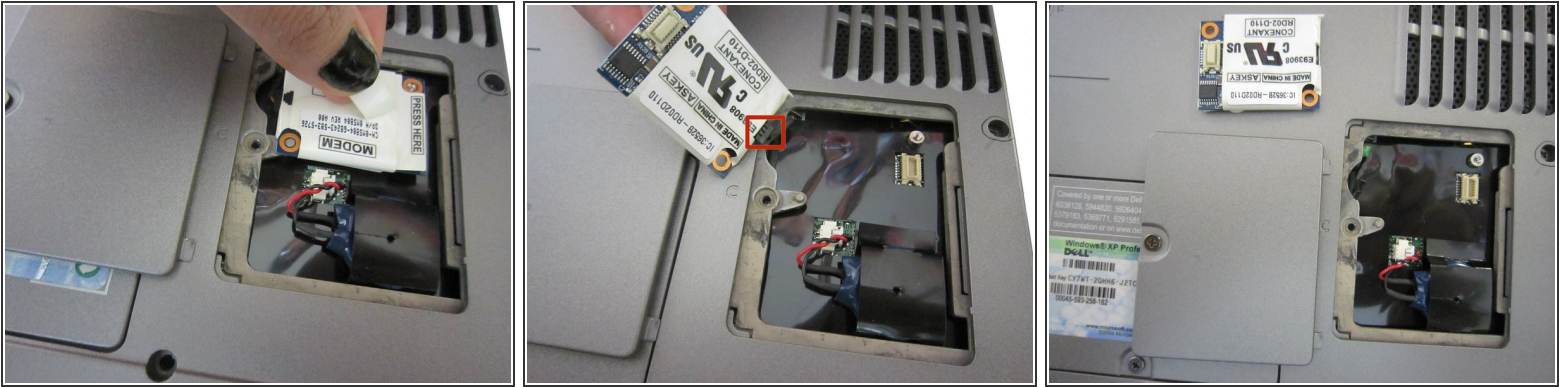
- Lift and remove the lid.

Step 6



- Remove the 3.9mm Philips #1 screw on top of the modem.

Step 7



- Pull on the white tab to remove the modem
- Remove the cable going to the modem.

To reassemble your device, follow these instructions in reverse order.