



Dell Latitude D620 CD Drive Replacement

Written By: Ivan



INTRODUCTION

Installing a new cd drive into the D620.



TOOLS:

- [Phillips #00 Screwdriver](#) (1)
 - [Spudger](#) (1)
-

Step 1 — Keyboard



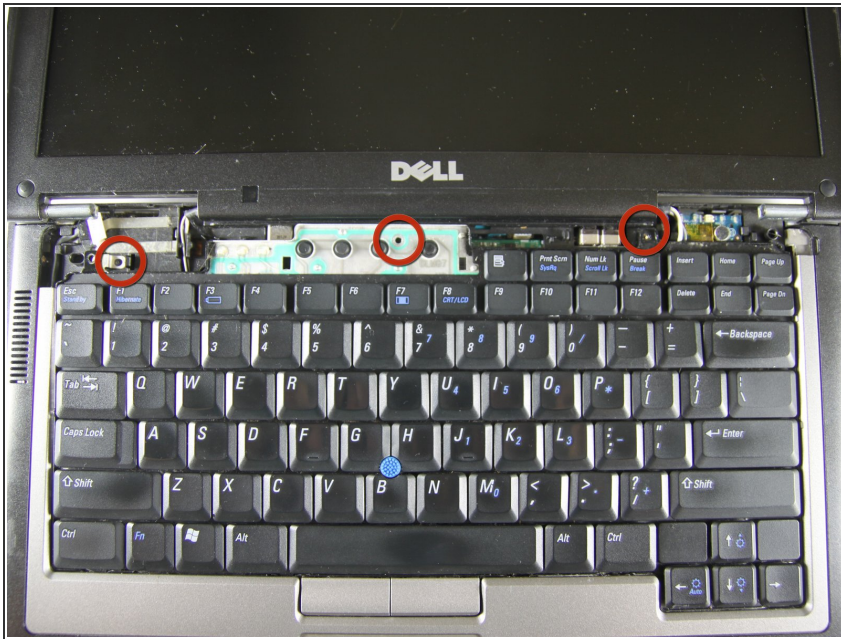
- ⚠ Power down the laptop and remove the battery.
- Open the laptop cover all of the way.

Step 2



- Locate the notch under the cover at the top of the keyboard
- Using the spudger as a lever, lift the plastic covering
- Carefully remove the rest of the covering from right to left

Step 3



- Unscrew the top portion of the keyboard using a #00 screwdriver

Step 4



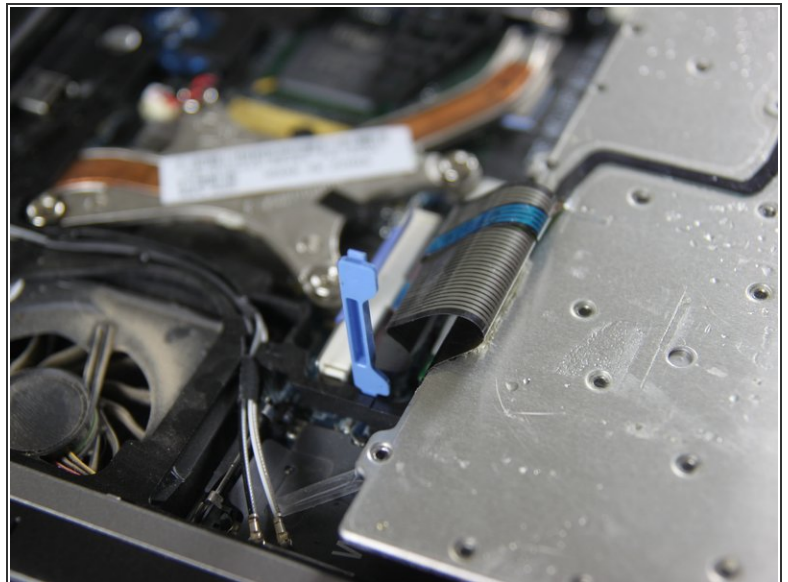
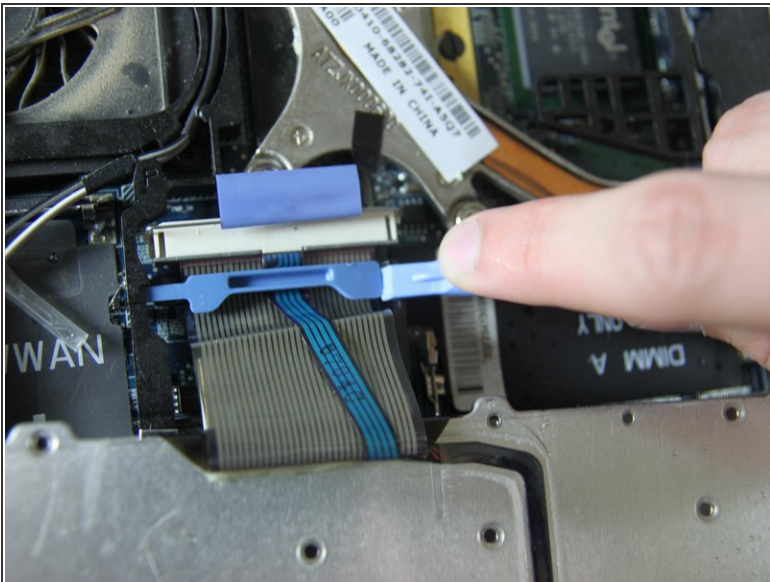
- Hold keyboard from the top and gently pull towards the LCD screen to remove the keyboard from the case
- ⚠ Don't pull on the keyboard too forcefully because it is attached to the motherboard with a short, thin ribbon cable

Step 5



- Once keyboard is out of the case, lay it face-down on the track pad

Step 6



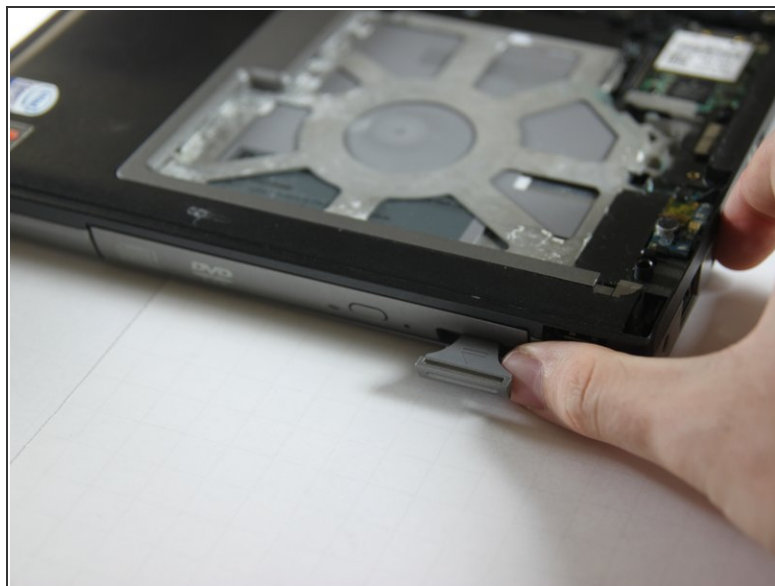
- Using a small spudger, pull back on the black bar to release the blue lever

Step 7



- Pull up on the metal bar connected to the socket to detach the ribbon cable

Step 8 — CD Drive



- Press in the tab on the bottom right side of the CD drive
- ⓘ The tab comes out on its own; there is no need to pull it out manually.

Step 9



- Gently pull the tab to remove the disk tray.

To reassemble your device, follow these instructions in reverse order.