



Dell Latitude D620 Display Replacement

Written By: Miguel Wong



INTRODUCTION

Guide to separating the display from the body of the laptop.



TOOLS:

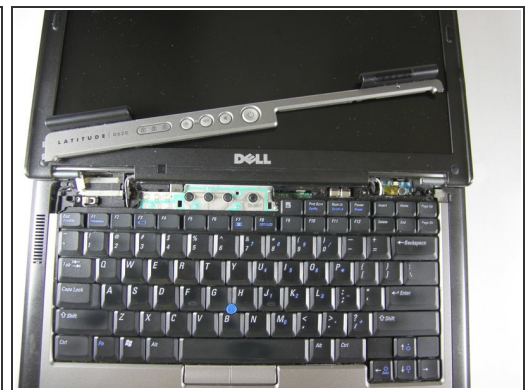
- [Phillips #00 Screwdriver](#) (1)
 - [Spudger](#) (1)
-

Step 1 — Keyboard



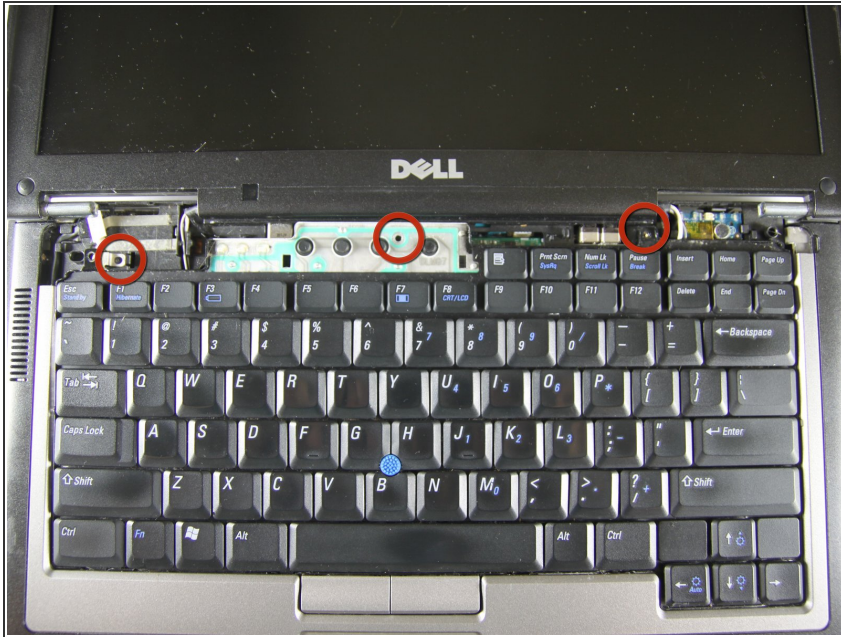
- ⚠ Power down the laptop and remove the battery.
- Open the laptop cover all of the way.

Step 2



- Locate the notch under the cover at the top of the keyboard
- Using the spudger as a lever, lift the plastic covering
- Carefully remove the rest of the covering from right to left

Step 3



- Unscrew the top portion of the keyboard using a #00 screwdriver

Step 4



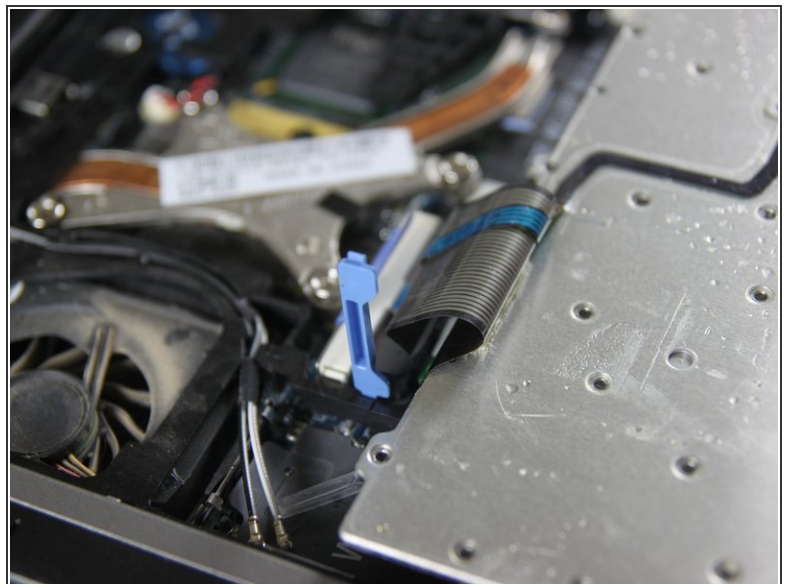
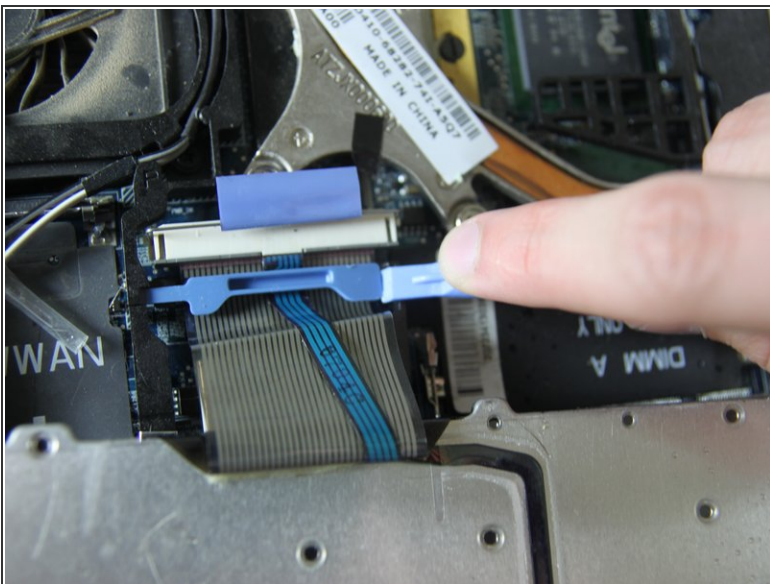
- Hold keyboard from the top and gently pull towards the LCD screen to remove the keyboard from the case
- ⚠ Don't pull on the keyboard too forcefully because it is attached to the motherboard with a short, thin ribbon cable

Step 5



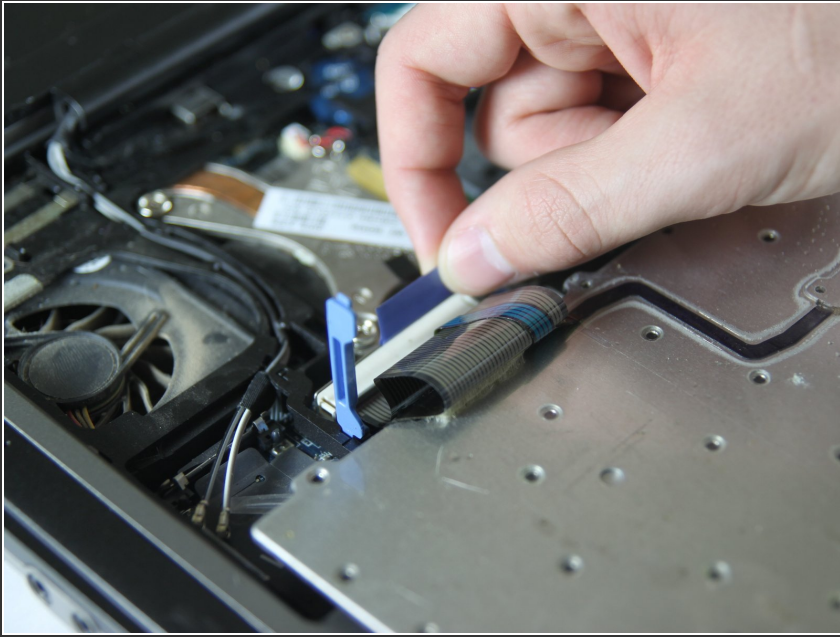
- Once keyboard is out of the case, lay it face-down on the track pad

Step 6



- Using a small spudger, pull back on the black bar to release the blue lever

Step 7



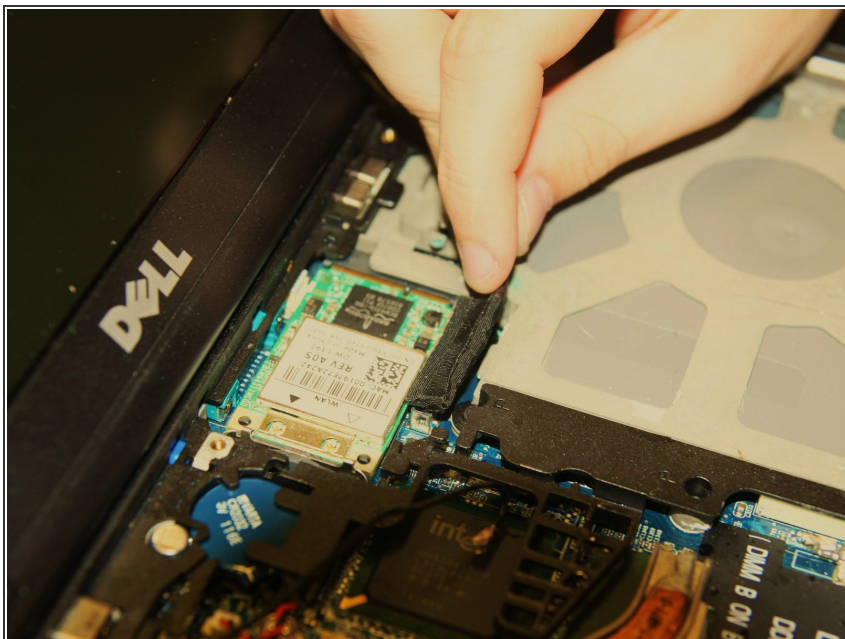
- Pull up on the metal bar connected to the socket to detach the ribbon cable

Step 8 — Display



- Detach cables that connect the display to the body of the laptop

Step 9



- Disconnect the black cable attached to the motherboard

Step 10



- Close the laptop lid
- Turn the laptop over onto its backside
- Unscrew the two screws shown in the picture using a #00 screwdriver

Step 11



- Face the laptop's back ports towards you
- Unscrew the two screws labeled in the picture using a #00 screwdriver

Step 12



- Turn the laptop over again so it's right-side up
- Open the display, and pull the display up and out of the laptop's body

Step 13



- Remove the circular rubber pads as outlined in the picture using a spudger

Step 14



- Unscrew the screws that were under the rubber circles using the #00 screwdriver

Step 15



- Carefully use a spudger to work around the edge of the screen to lift off the plastic cover

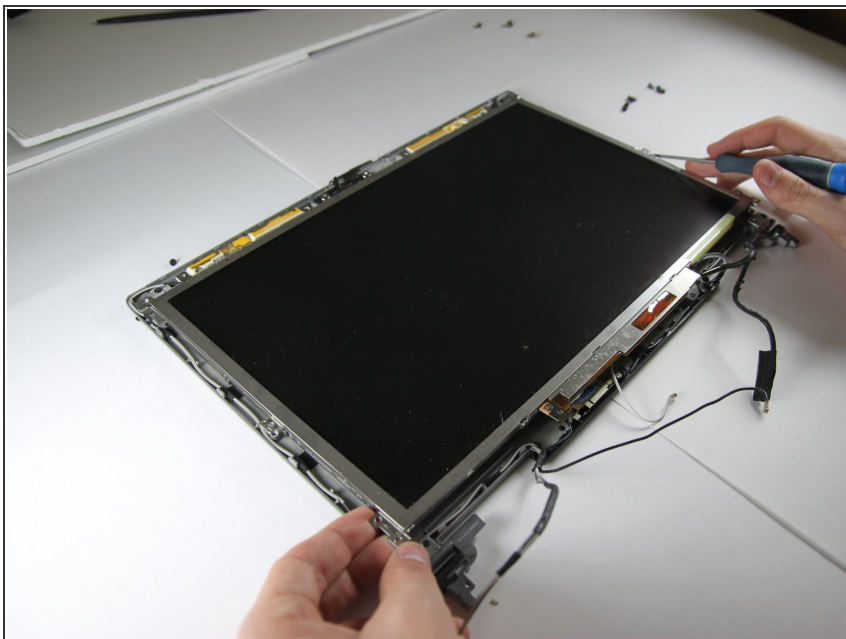
⚠ Be very careful while doing this as the plastic snaps easily

Step 16



- Remove the screws outlined in the picture

Step 17



- Carefully lift the LCD screen out of its casing

To reassemble your device, follow these instructions in reverse order.