



# Dell Latitude D620 Hard Drive Replacement

Removal and Replacement of Dell Latitude Hard Drive.

Written By: James Martin

## INTRODUCTION

This is very simple compared to RAM removal on this laptop.



### TOOLS:

- [Phillips #0 Screwdriver](#) (1)

## Step 1 — Removing the Battery



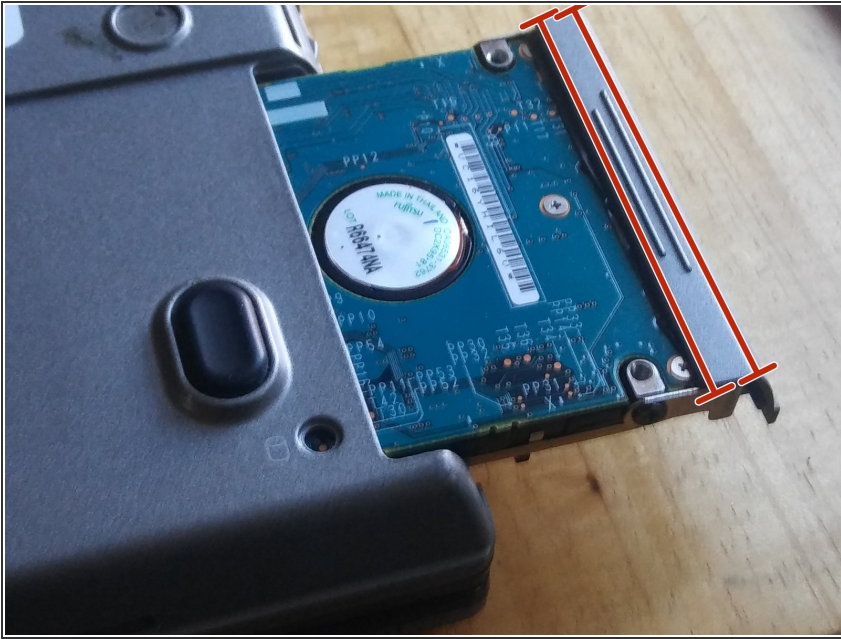
- First, as always, power down the laptop and remove the battery., This can be done by pulling the two tabs above the battery and then simply pulling out the battery.

## Step 2 — Unscrew the drive bay



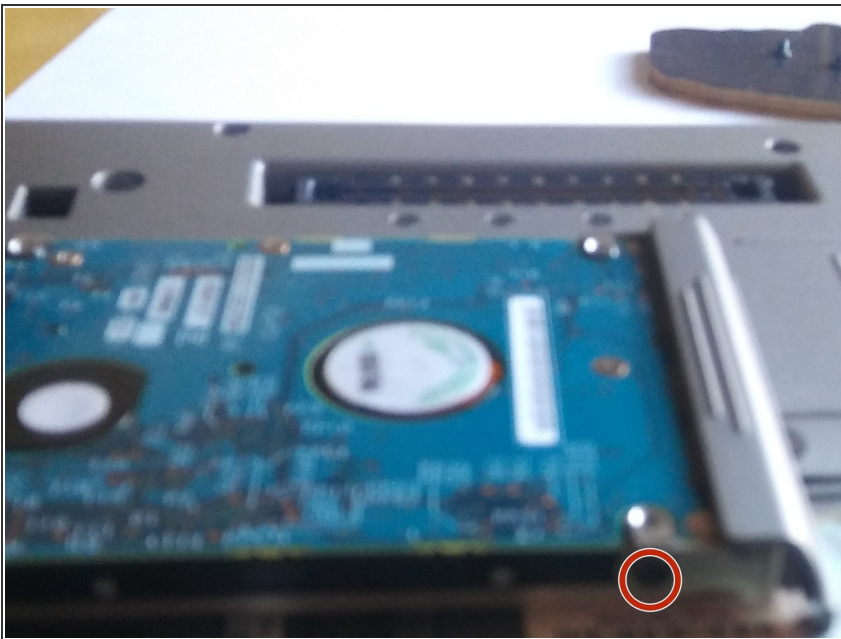
- Now, remove the two drive screws, located in the bottom right of the laptop. These are helpfully labeled with a cylindrical hard drive icon.

### Step 3 — Removing the drive bay



- Now, simply pull the hard drive out

### Step 4 — Removing the drive from its cage



- Now, remove the drive from its cage by removing the single screw holding it in. See the picture for help

To reassemble your device, attach your drive to the bay and follow these instructions in reverse order.