



Dell Latitude D620 Teardown

This guide will completely teardown a Dell Latitude D620 laptop.

Written By: Nicholas Ouimet



INTRODUCTION

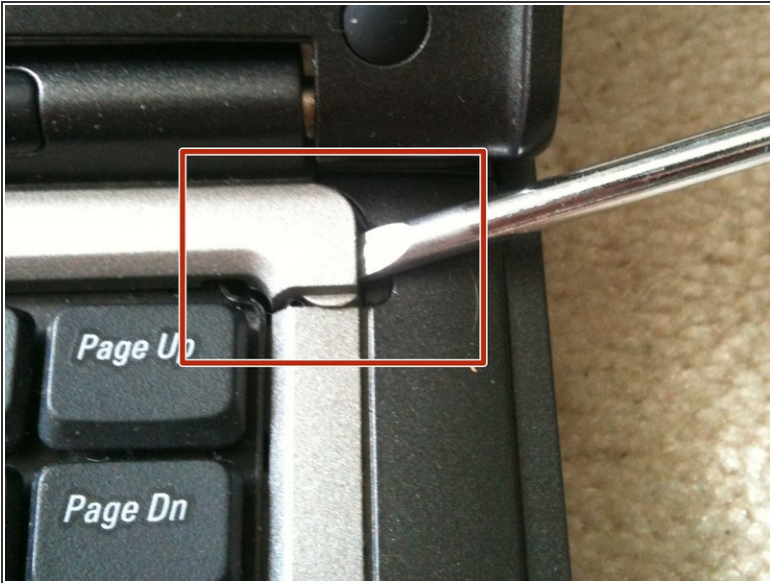
The Dell latitude D620 was introduced in March 2006. Both the first MacBook Pro and this Dell Latitude D620 have the same Intel Core Duo T2300E. Like the first MacBook, they both have Intel's GMA 950 Integrated Graphics.



TOOLS:

- [Metal Spudger](#) (1)
 - [Phillips #1 Screwdriver](#) (1)
 - [iFixit Opening Tools](#) (1)
-

Step 1 — Removing Keyboard Bezel



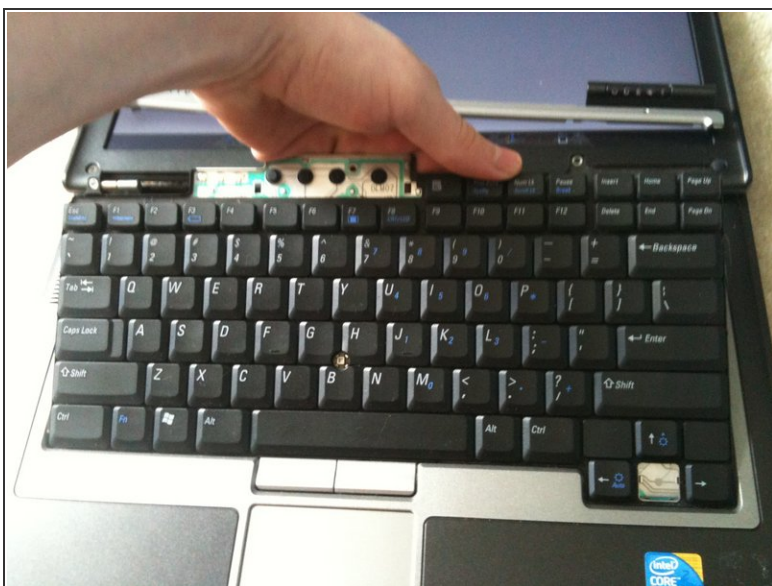
- Open the laptop's screen 180 Degrees so it is straight back.
- Use a flat head screwdriver or a spudger to pry the top bezel off. Work it side to side until the bezel is freed from the chassis, exposing 3 screws

Step 2 — Removing Keyboard Screws



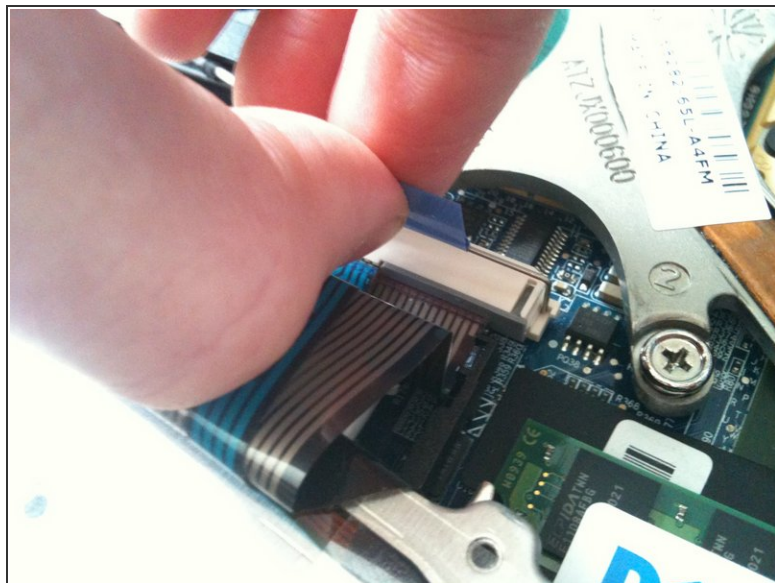
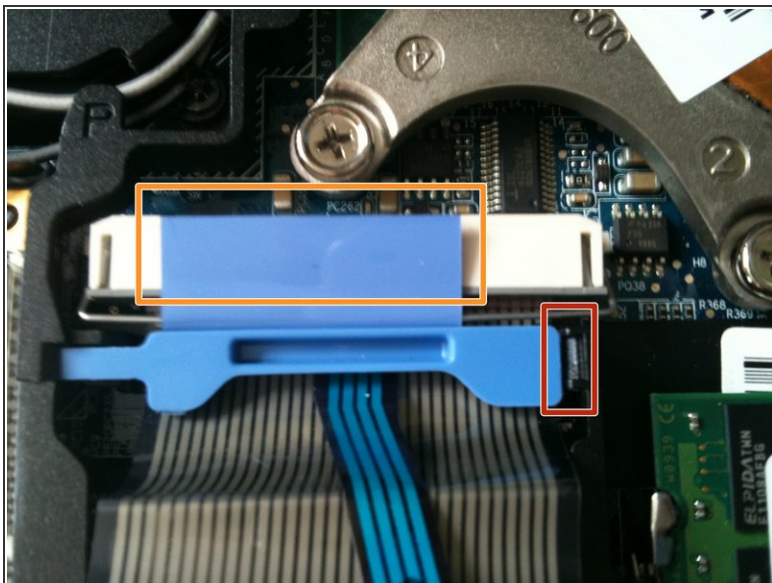
- Remove the 3 Phillips screws securing the keyboard.
- ☑ Just remember to keep your screws organized! It will make everything much easier.

Step 3 — Removing the Keyboard



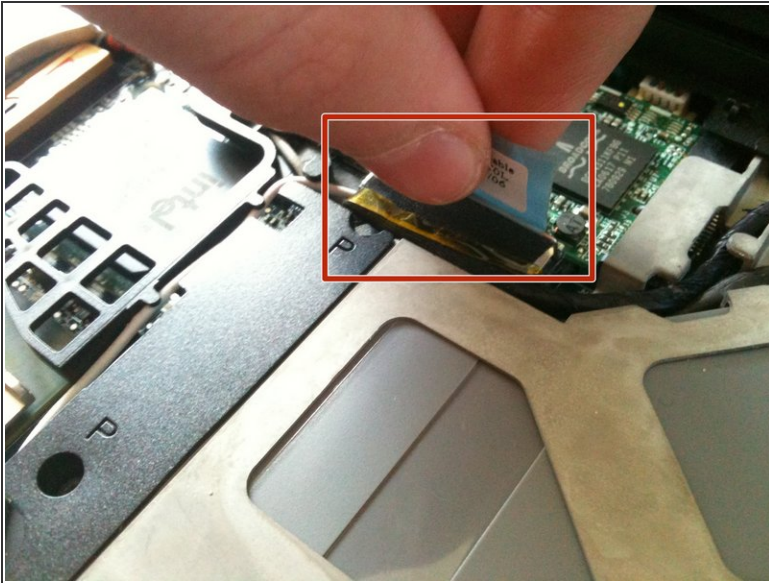
- Use your fingers to carefully lift up the keyboard. Refer to the first picture for guidance.
- Carefully pull the keyboard upwards toward the LCD screen so it can be released from the bottom tabs.
- Carefully lift the keyboard so the keys are resting on the palmrest, this will expose the ribbons for the keyboard, trackpad and Tracking Nub.

Step 4 — Removing Ribbons



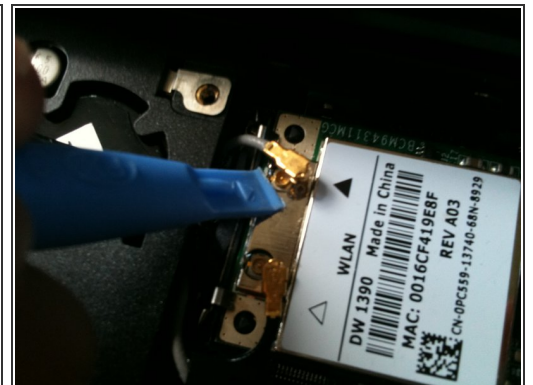
- First insert a small flat head screwdriver or a spudger into the small notch in between holding down the ribbon.
- Then grab the metal bar on top of the keyboard connector and pull straight up. The cable should come free.

Step 5 — Display Connector



- Grab the top of the display connector and pull it straight up and out.
⚠ This connector requires a little more force than the others, so it may take some effort.

Step 6 — WLAN Card Antenna Removal



- Use a tool or your fingers to gently remove the antenna cables from the wireless card.

Step 7 — WLAN Card Removal



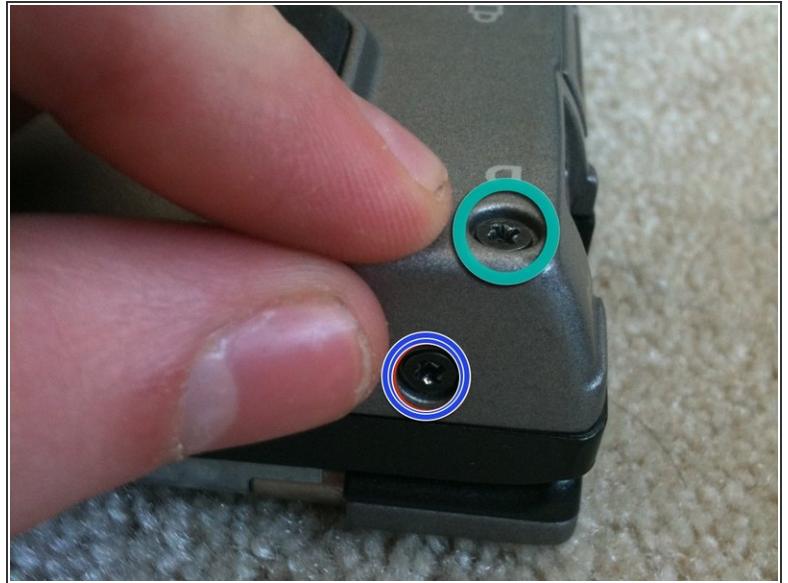
- Pull back the clips by the antenna connectors, and the card should rise up on its own. Gently remove the card from its socket.

Step 8 — WWAN Card Removal



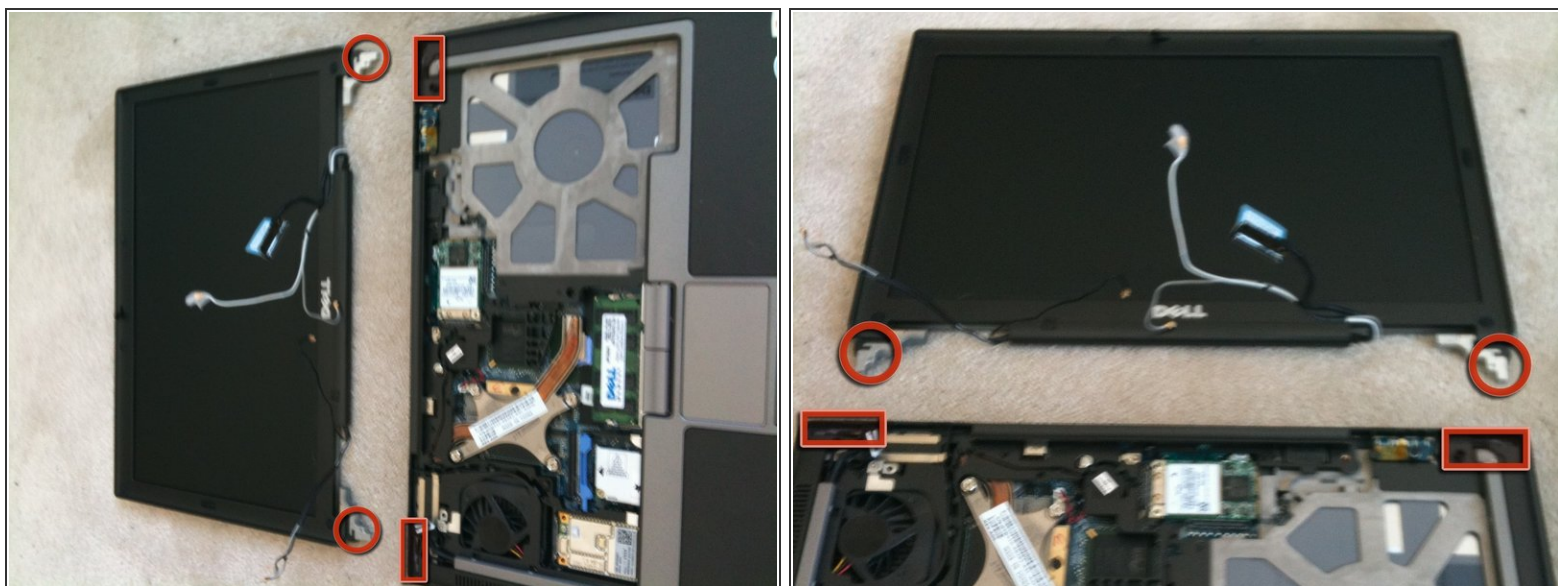
- ⓘ Not all devices have a WWAN Card, so most people can skip this step.
- Using similar procedures as the WLAN, disconnect the single antenna cable, push the rear clips back and remove the card.

Step 9 — LCD Screws



- Close the laptop screen completely, make sure it clips in place.
 - ⓘ Follow the Green bullet first then move onto the Blue bullet.
- ⚠ Make sure no cables or parts get caught in the hinge.
- The bottom screw is labeled with D, remove it.
- The screw on the rear is not labeled, remove it as well.
 - ⓘ Repeat this for the opposite side of the laptop.

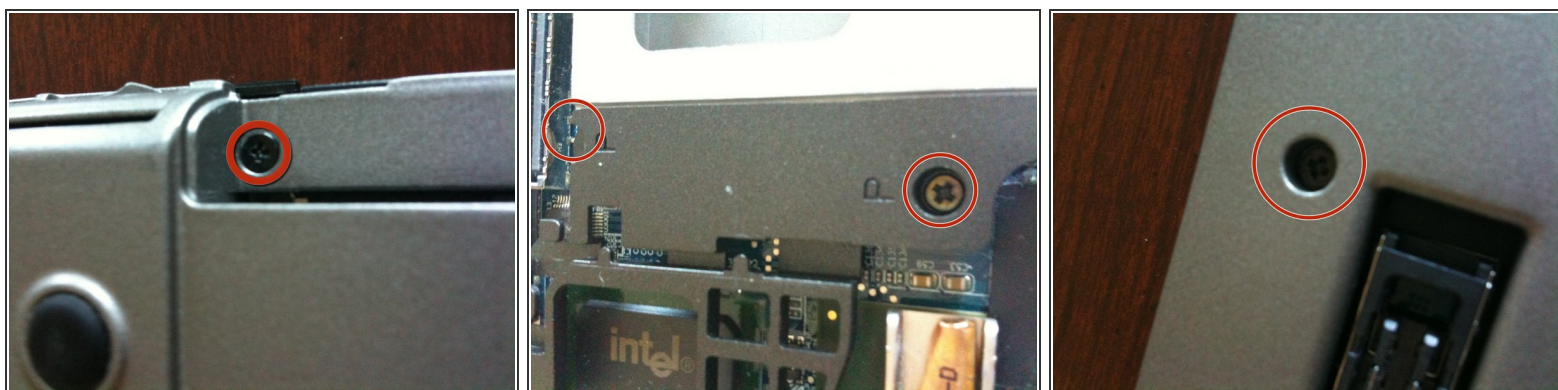
Step 10 — LCD Screen Removal



⚠ Very, VERY carefully open up the screen so it is at a 90° angle with the palmrest.

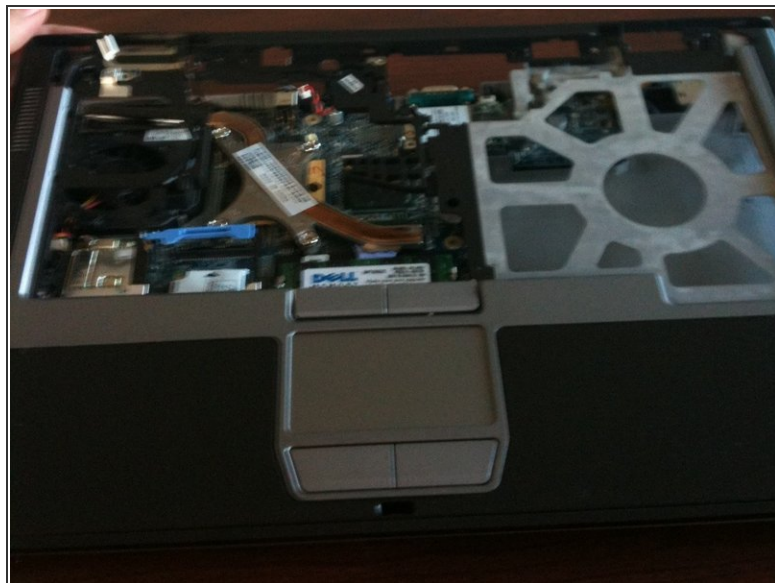
- Pull it straight up, making sure all cables are free of their routing areas.

Step 11 — Remaining Screw Removal



- Remove all of the remaining screws on the laptop with a Phillips screwdriver.
- There are screws on the top under the keyboard as well, remove those.
- ⓘ All of the screws with a P by them means they secure the palmrest. This will help you keep organized.

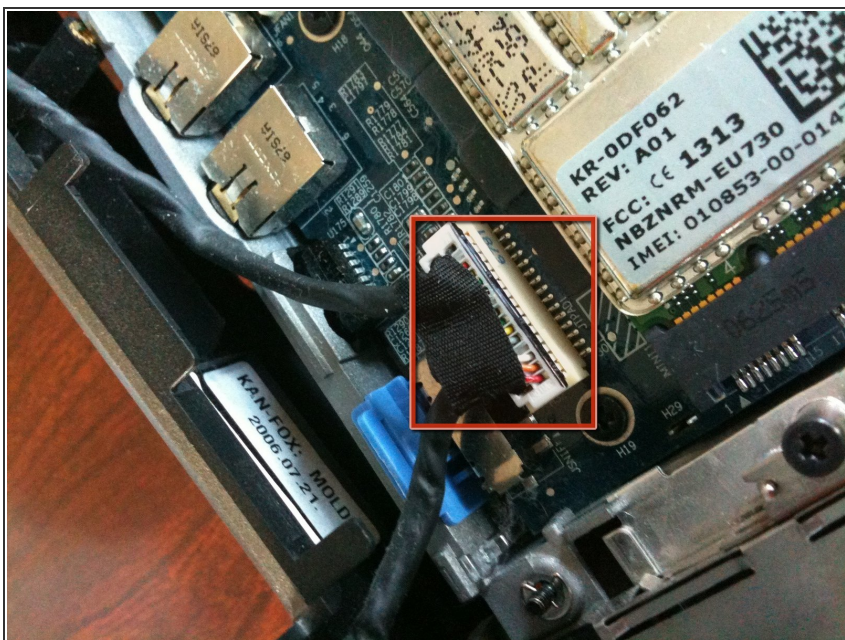
Step 12 — Palmrest Removal



- Separate the palmrest from the device, starting from the back by sliding it forward and pulling it most of the way off.

⚠ Don't remove it completely, there is still one connector attached.

Step 13 — Trackpad Cable Removal



- Pull the trackpad connector straight out of the motherboard.

⚠ Don't pull on it by the cables, grab as close to the socket as you can.

Step 14 — Heatsink Unscrewing



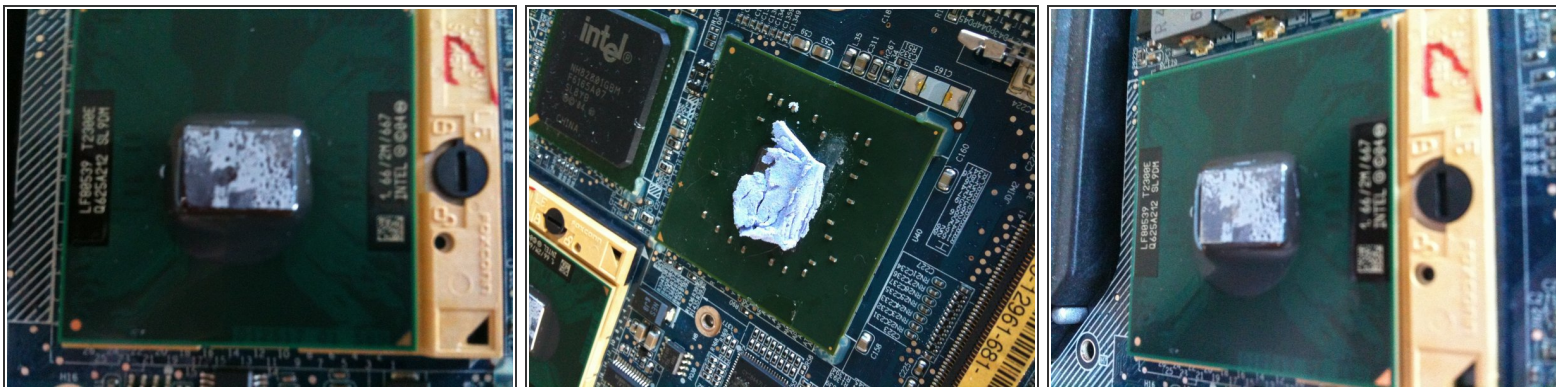
- With a Phillips screwdriver, remove the 4 screws on the heatsink, in order of the numbers of the metal.
- ⚠ Loosening the screws out of order can be damaging.

Step 15 — Heatsink Removal



- Grab the heatsink and remove it, it may require force.
- There is still thermal paste and a thermal pad attached.

Step 16 — Cleaning Thermal Paste



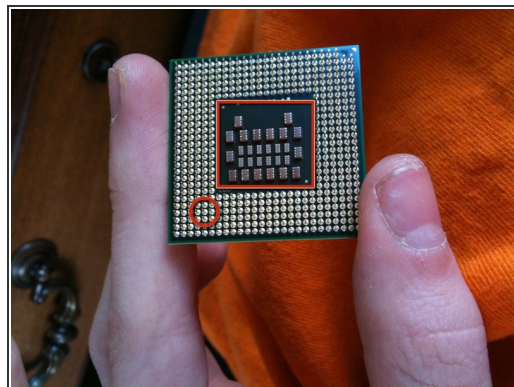
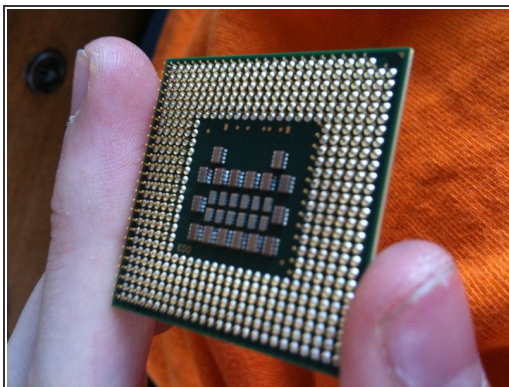
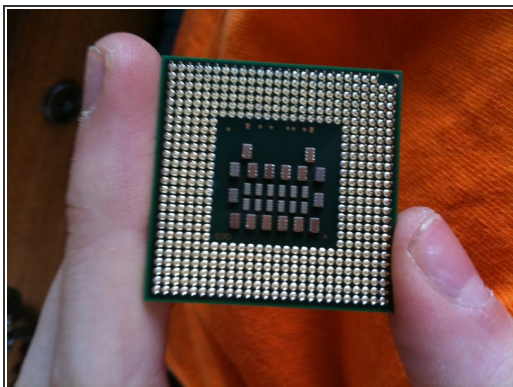
- Clean the remaining thermal compound off of the CPU. Remove the thermal pad if it is still stuck to the GPU.

Step 17



- Several more photos of the Intel Core Duo.

Step 18 — Remove the CPU.



- Gently turn the screw above the socket and lift the CPU out.

❗ The End!