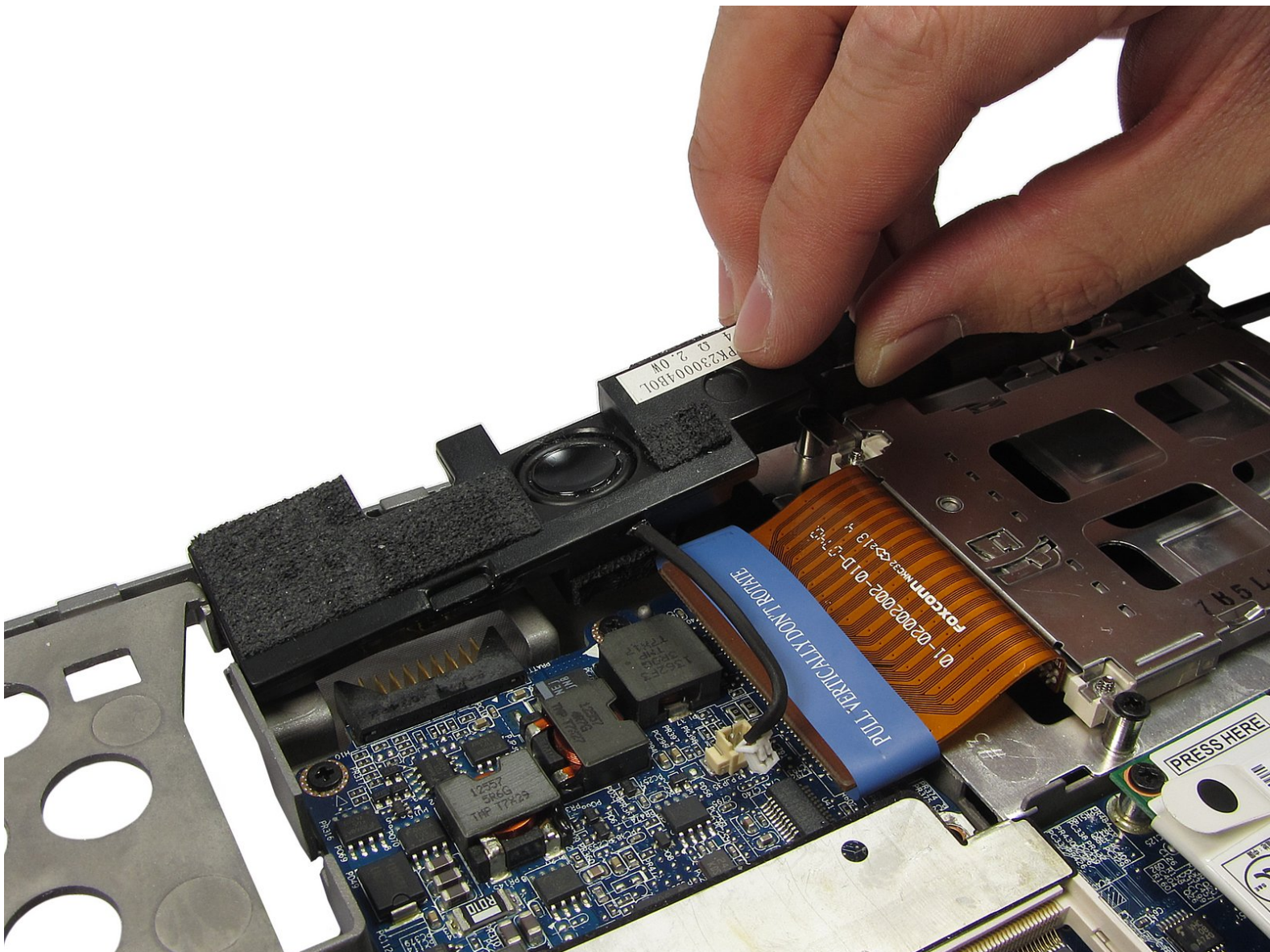




# Dell Latitude D630 Speaker Replacement

This guide will help you replace the speaker on your D630.

Written By: Jon Amireh



# INTRODUCTION

## Introduction

Speakers are a common element of the laptop to need to be replaced. The every day stress on the speakers to provide entertainment will cause them to wear over time.

## This Guide Will Teach You

1. The basic safety steps to follow when fixing the laptop
2. To disassemble of the laptops internals and reach the Speakers
3. Precaution to prevent further damage to the laptop
4. Tools needed for the repair



### TOOLS:

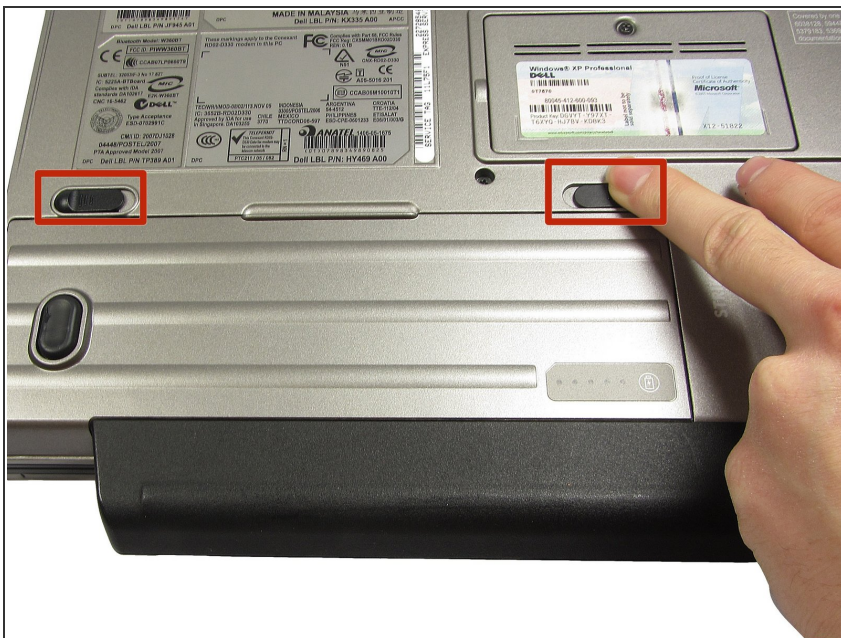
- [Phillips #0 Screwdriver](#) (1)
  - [Spudger](#) (1)
  - [iFixit Opening Tools](#) (1)
-

## Step 1 — Battery



- Shutdown the computer, detach it from any power source, and make sure the laptop is closed with its latch securely shut.
- Turn the laptop over so its bottom is facing you.
- ⓘ The laptop pictured comes with a palm rest attached to the battery case. This part may not be present on your laptop. Regardless, the steps are exactly the same.

## Step 2



- Using two index fingers, slide the battery latches outward.
- While still holding the latches out, use your thumbs to slide the battery out towards you.
- Once the battery is dislodged, you can let go of the latches and remove the battery.

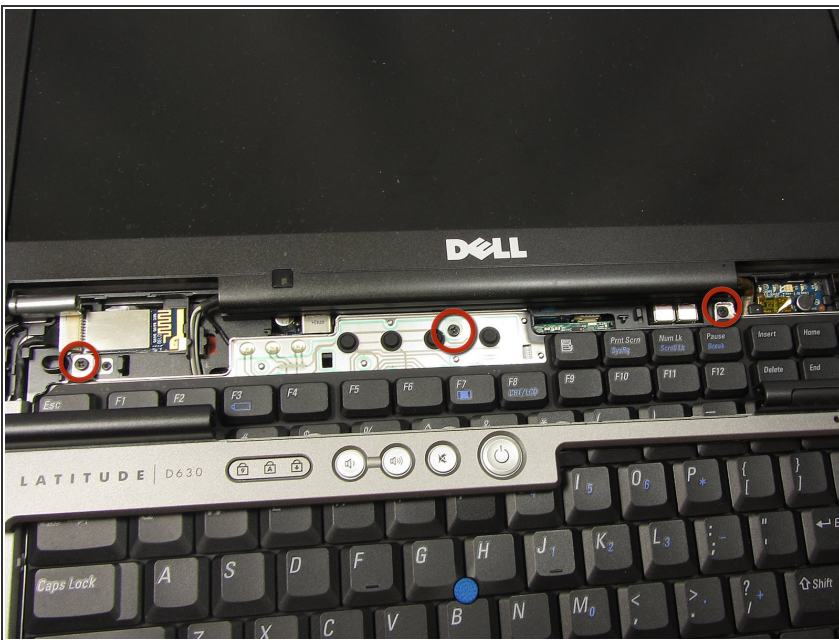


## Step 3 — Keyboard



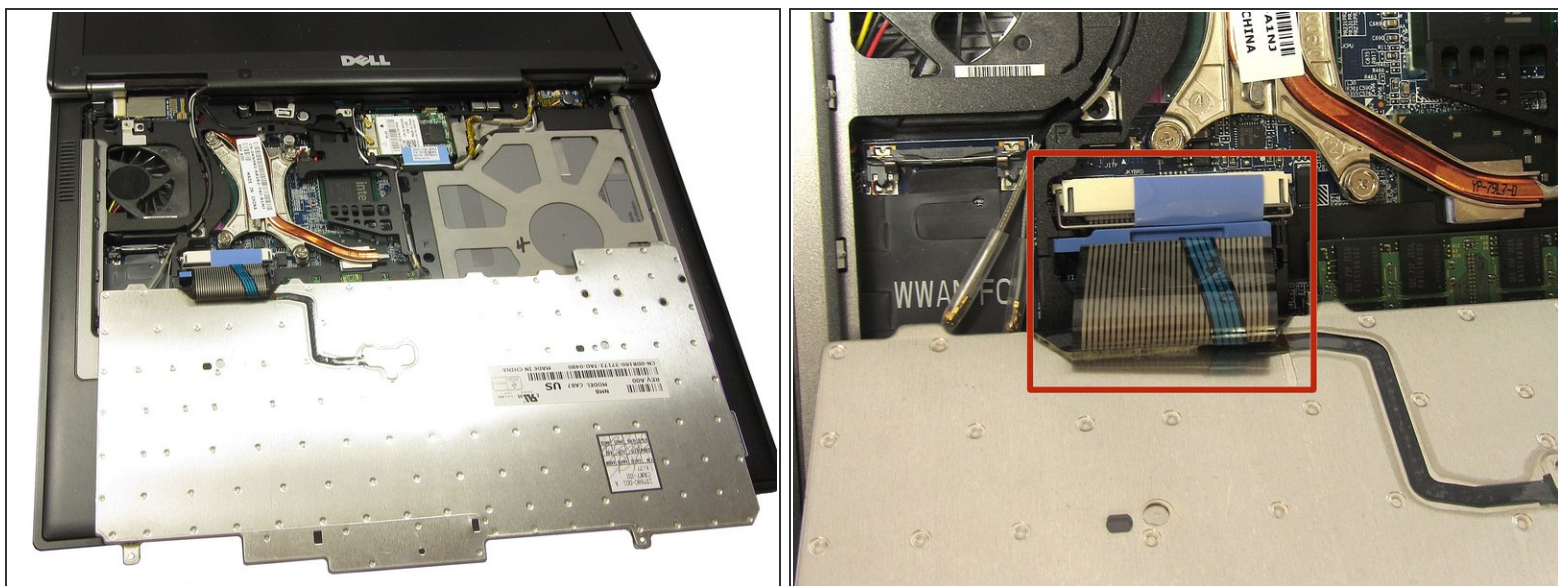
- With the battery removed, turn the laptop face up and open the lid a complete 180 degrees.
- Using a plastic opening tool, pry off the corner of the keyboard bezel by undoing the tab.
- Once you've removed the corner of the bezel, you can use your hands to slowly, but with moderate force, pull the rest of the bezel slightly up and towards you to release the remaining tabs.

## Step 4



- Remove the three 3mm Phillips #0 screws securing the keyboard.

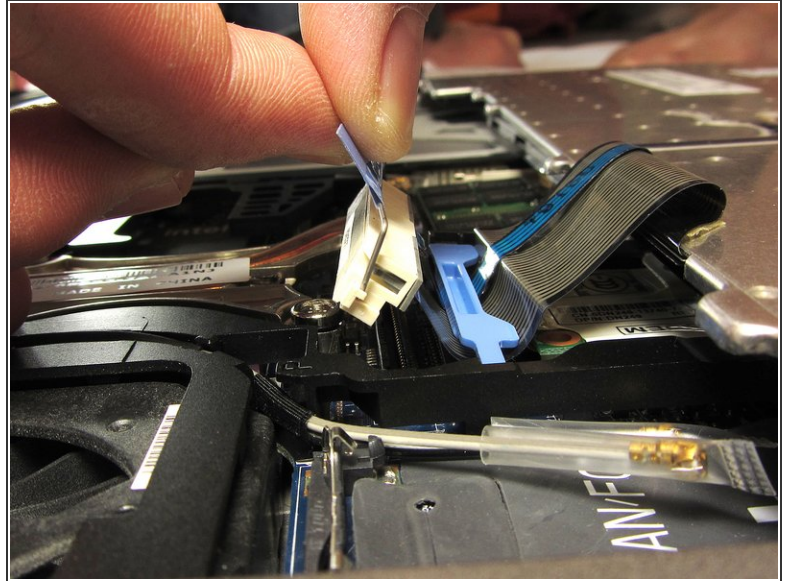
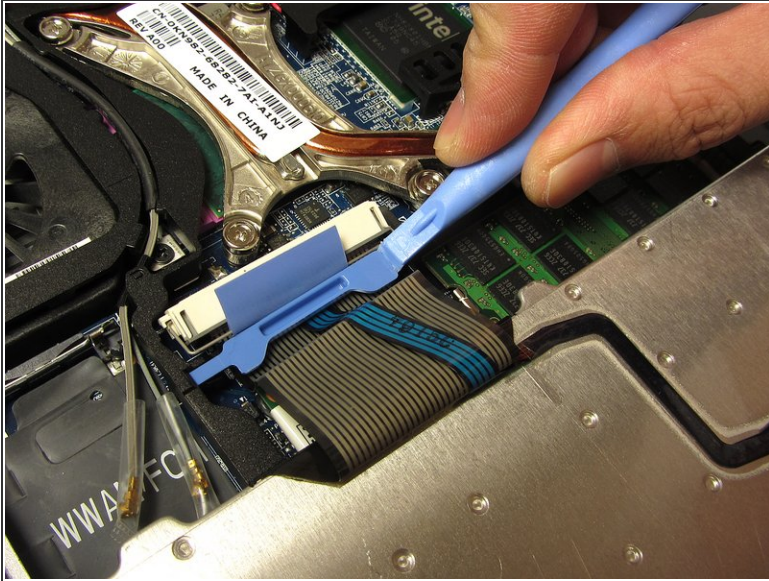
## Step 5



- Slowly bring the keyboard up and fold it back onto the touchpad.
- ⚠ Be careful not to pull too hard or too far when folding over the keyboard. The keyboard is still connected to the motherboard by a short ribbon cable.

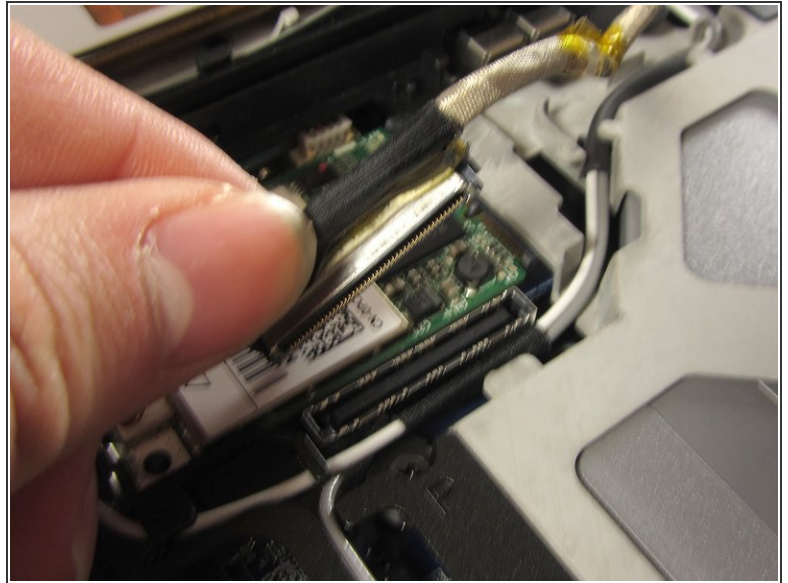
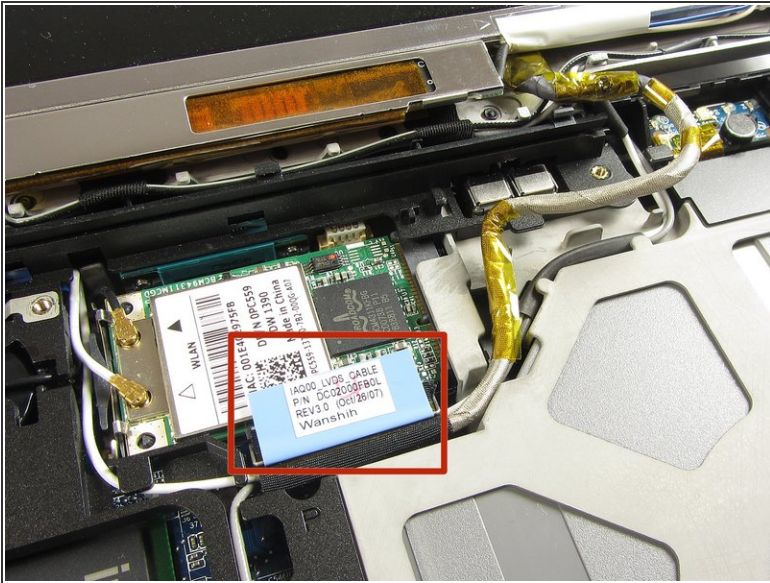


## Step 6



- Use a plastic opening tool to unhook the blue latch that secures the keyboard cable.
- Using the blue tab, pull the keyboard cable connector from its socket on the motherboard.

## Step 7 — Display



- Find and remove the display's ribbon cable by gently pulling on the blue tab indicated in the picture.
- While tracing the path of the cable back to the display, unhook the cable from the tabs of the body using the spudger.



## Step 8



- Using the spudger, peel off the 6 circular rubber pads on the display to reveal the bezel screws beneath them. Put the rubber pads aside in a labeled container.
- Careful: do not remove the two longer pads on the left and right side of the bezel; they do not contain any screws!

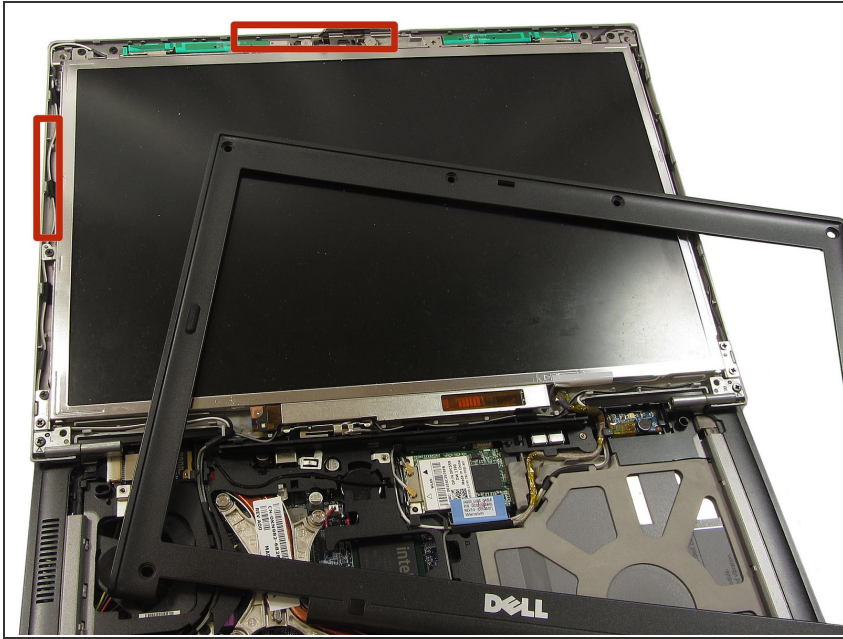
## Step 9



- Using the Phillips #0 screwdriver, remove each of the six screws (M2.5-5mm) on the bezel and put them in a labeled container.

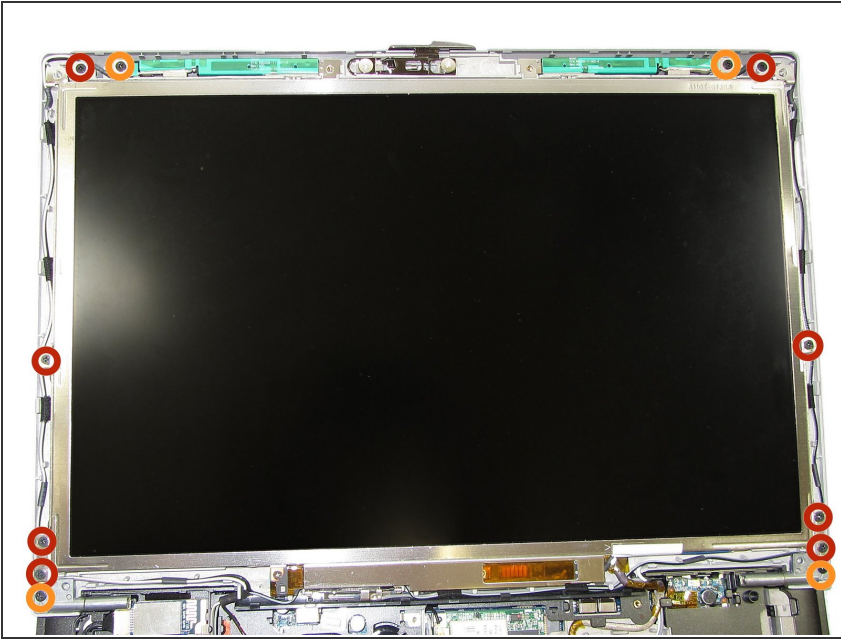


## Step 10



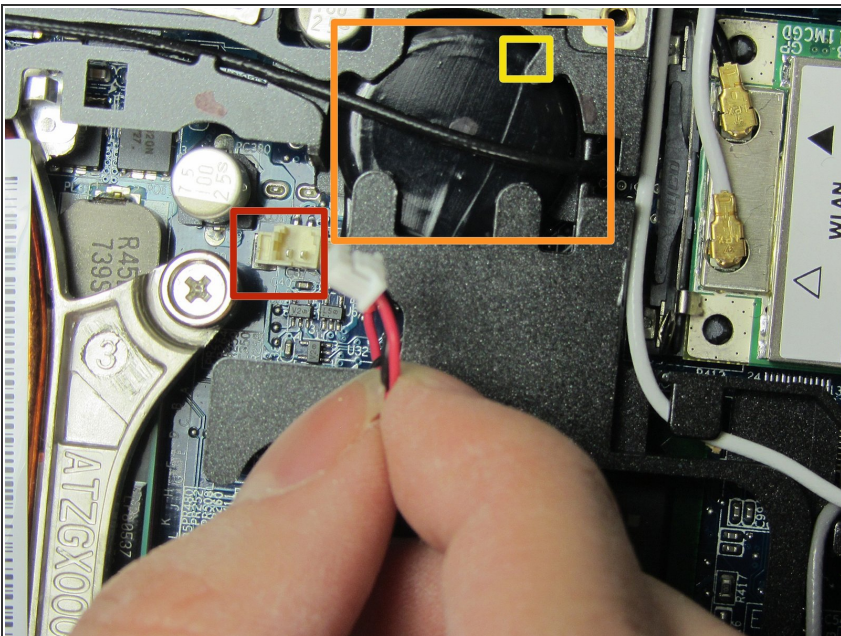
- Using the spudger, slowly pry off the the bezel from the rest of the laptop. This can be done by placing the spludge in the small opening that separates the the two adjoining screen pieces along the edge. Slowly slide along this opening till the screen is free.
- ⓘ It's easiest to begin at the top (next to the laptop's latch) and make your way down on both sides.

## Step 11



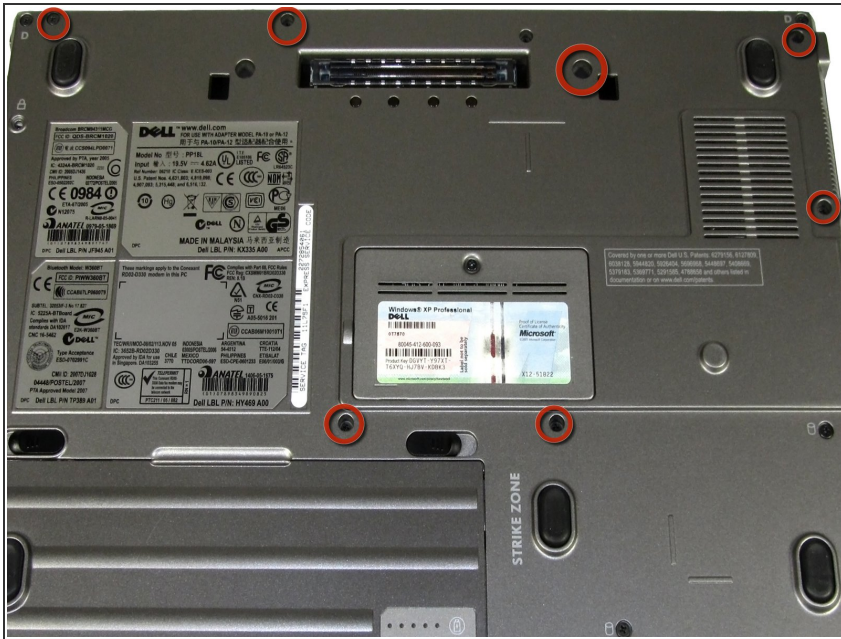
- Remove the 8 screws (M2-3mm) indicated in the picture. Place these screws in a labeled container as they are different than the bezel screws.
- Do not remove these screws
- ❗ If you are following this portion of the guide as a part of replacing the touchpad or the speaker, this step is NOT needed.

## Step 12 — CMOS Battery



- Remove the connector to the coin using the spudger.
- Slide the coin battery out of its slot by wiggling its connector with a gentle tug.
- You may also need to use the spudger to carefully push out the battery from the top of the slot where the yellow square is.

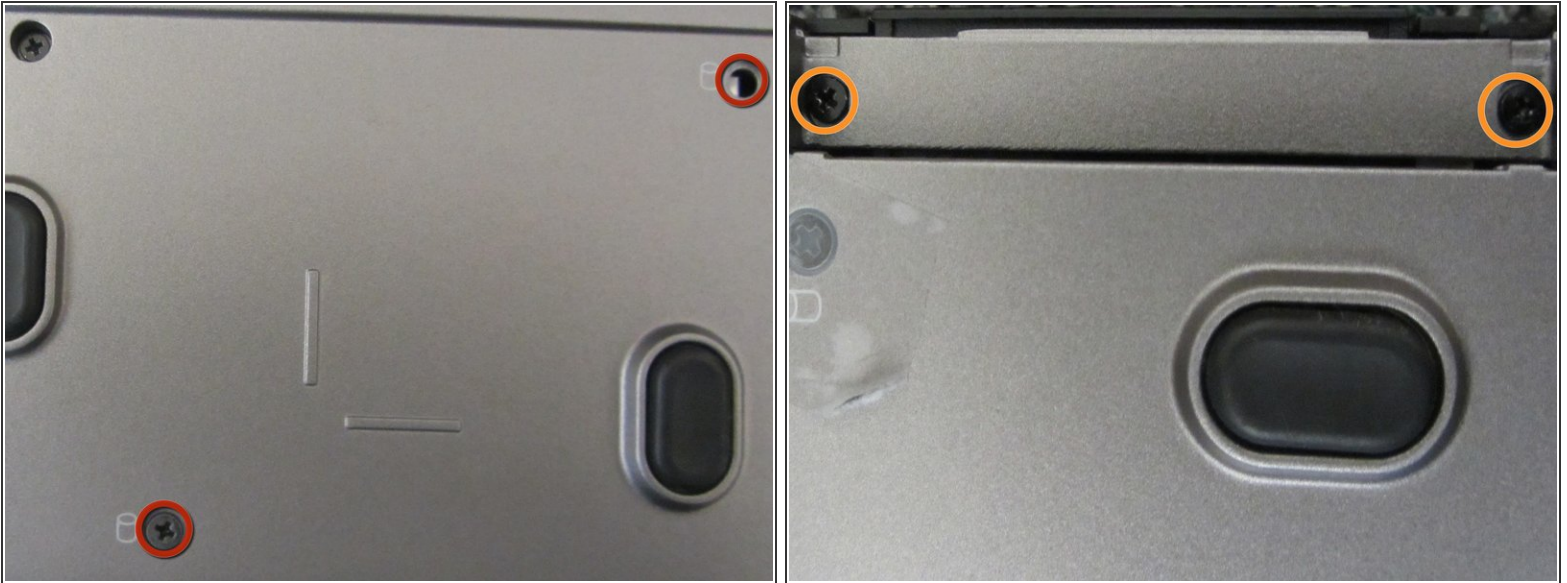
## Step 13 — Touchpad



- Carefully, close the laptop and turn it over.
- Remove the seven screws (M2.5-8mm) indicated to the left and place them in a labeled container.

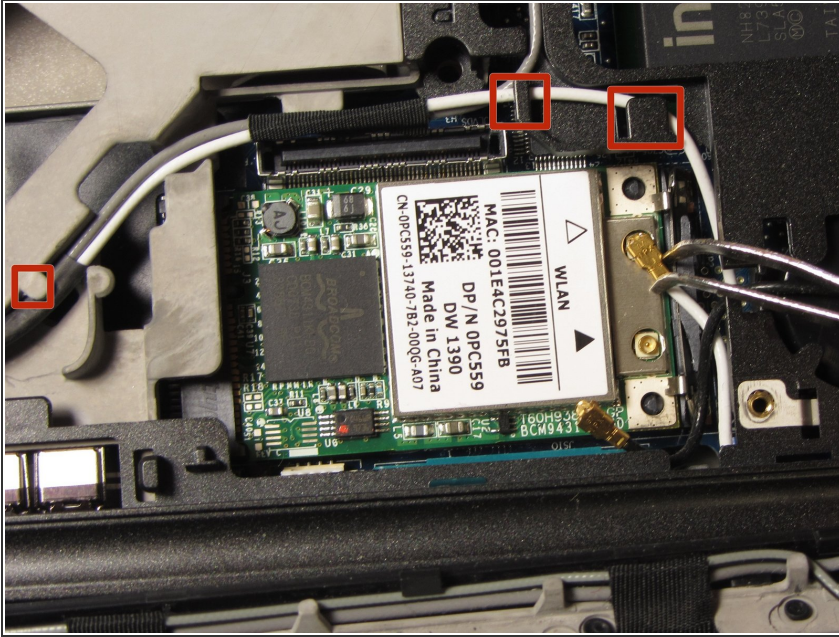


## Step 14



- Remove the hard drive screws and place them in a labeled container.
- Slide out the hard drive and set it aside.
- Loosen, but do not remove, the two screws at the edge of the laptop.
- Turn the laptop back over and open the screen to continue disassembly.

## Step 15



- Remove the black and white cables on the wireless card using the tweezers by pulling upward.
- While tracing the path of the black and white cables back to the display, unhook the cable from the tabs of the body using the spudger. Both wires need to be completely out of all the tabs, loose and unattached.

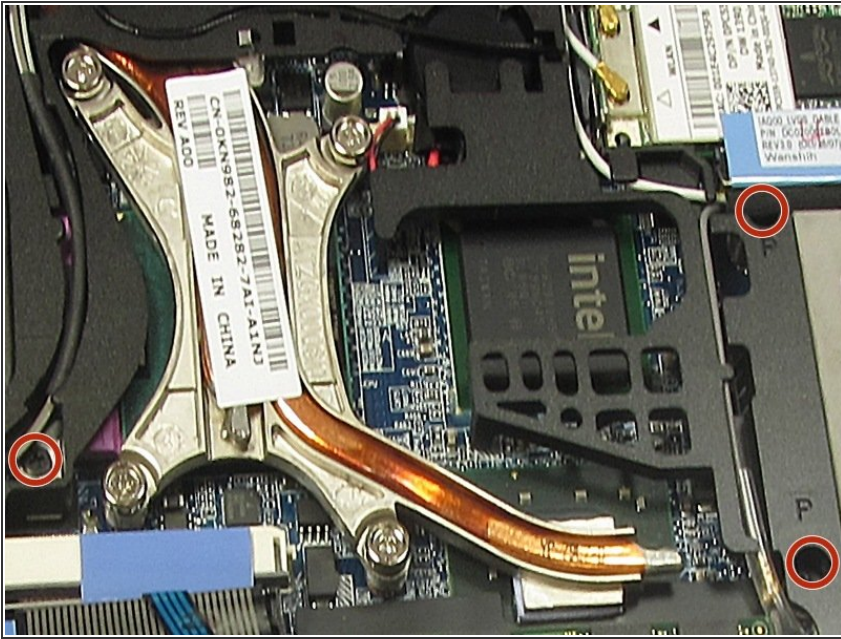
## Step 16



- Remove the two screws (M2.5-8mm) on the back panel of the laptop to release the hinges and place them into a labeled container.
- Pull up on the full screen to completely remove it from the bottom half of the laptop.

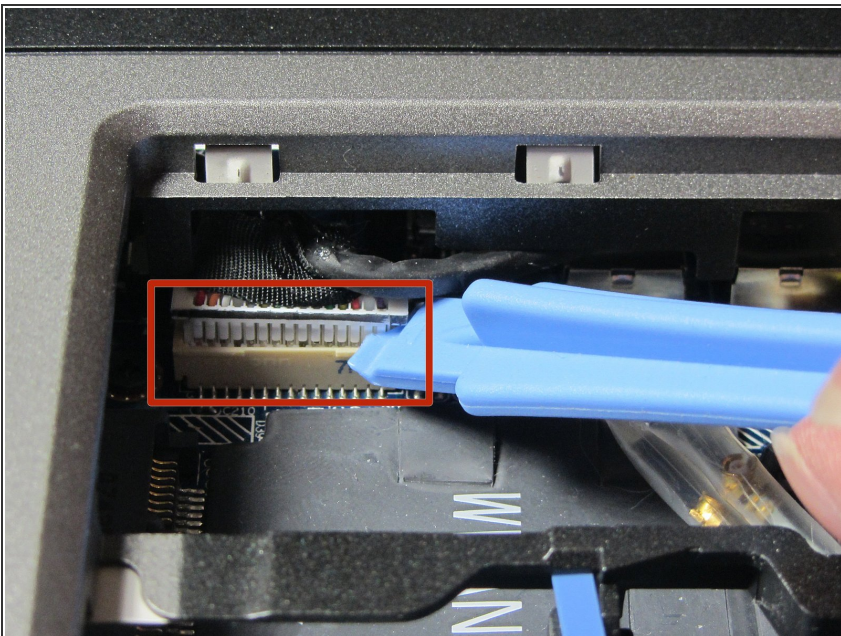


## Step 17



- Remove the three (M2.5-8mm) "P" screws indicated to the left and place them in a labeled container.

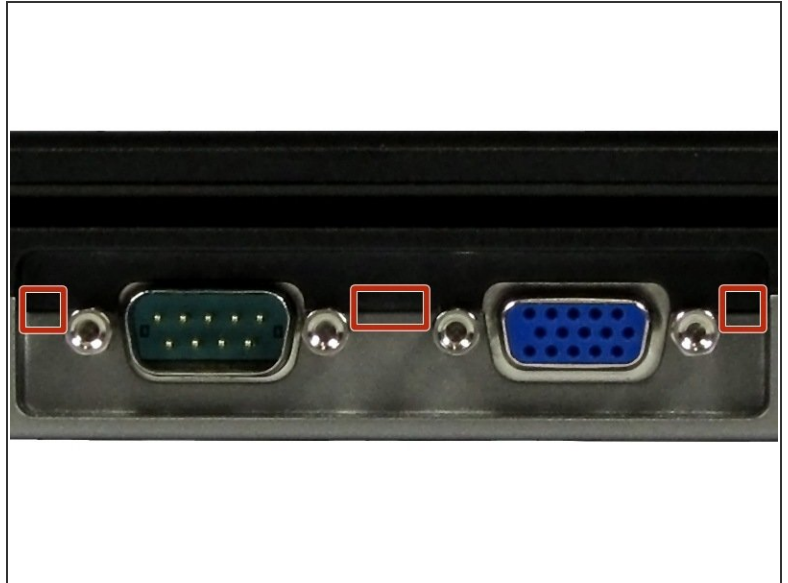
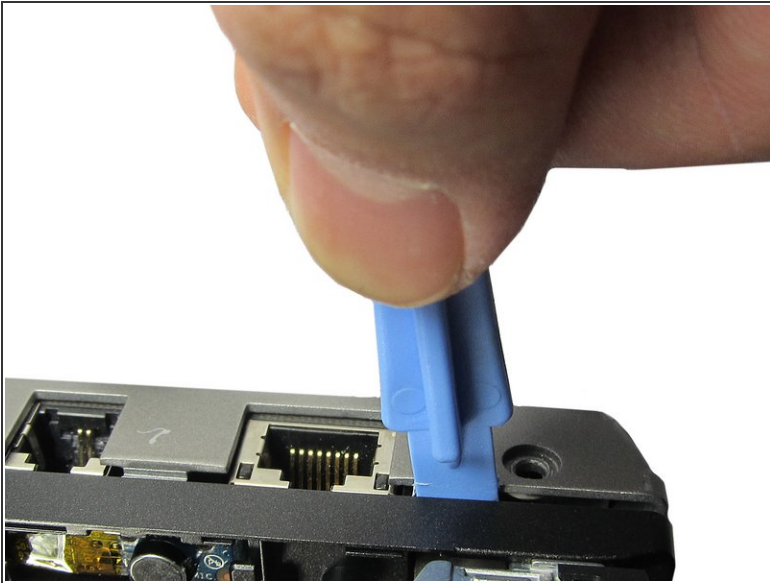
## Step 18



- Using the spudger, unhook the touchpad's ribbon cable from the left side of the board indicated in the picture.

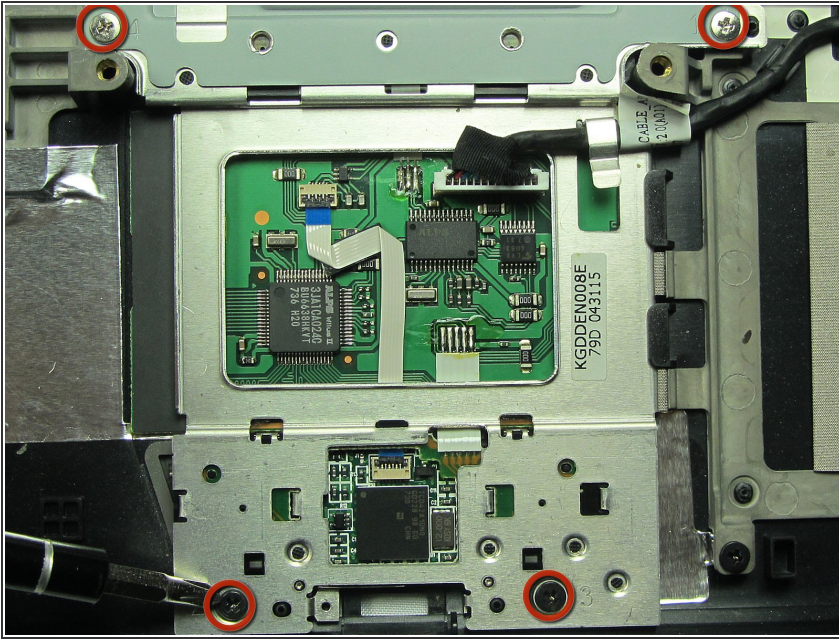


## Step 19



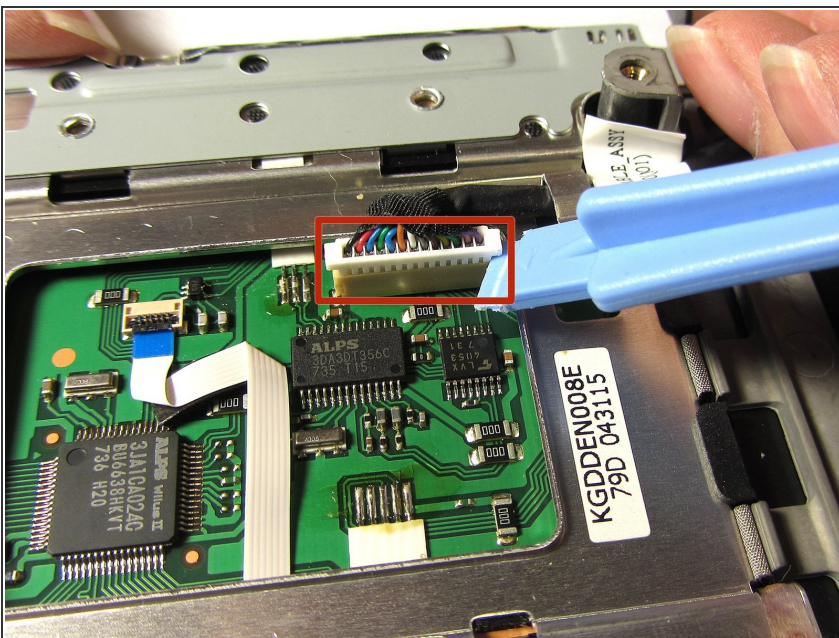
- Using the spudger, go around the perimeter of the laptop and separate the black-grey palm rest layer from the lighter-grey base layer.
- It's easiest to start in an opening near the display input ports on the back of the laptop and make your way around.
- Once all of the tabs have been unlatched, remove the palm rest layer.

## Step 20



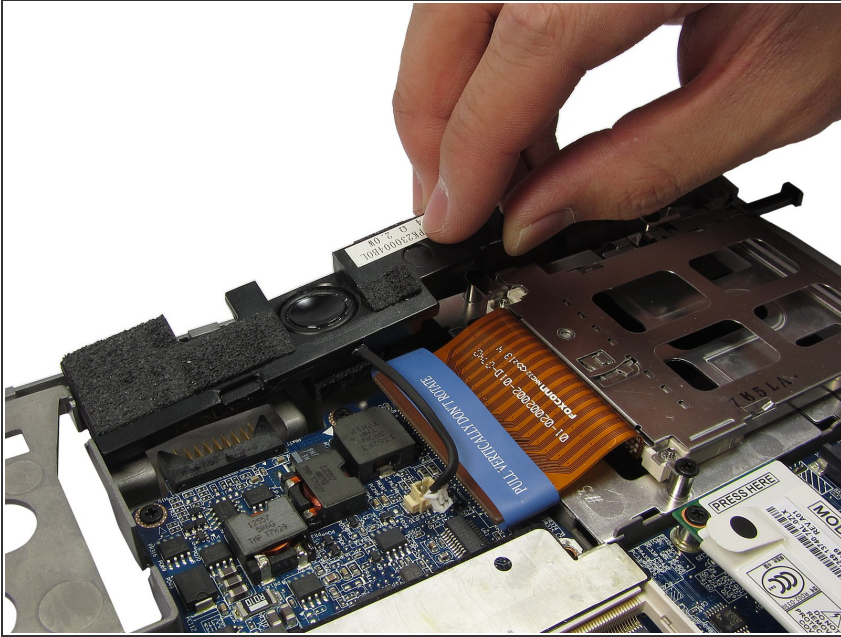
- Flip over the palm rest layer to reveal the touchpad.
- Remove the four screws (M2-5mm) indicated in the picture to the left and place them in a labeled container.
- ⓘ If following this guide to replace the speaker, you do NOT need to follow this step.

## Step 21



- Remove the connector on the touchpad using a spudger.
- ⓘ If following this guide to replace the speaker, you do NOT need to follow this step.

## Step 22 — Speaker



- Dislodge the connector to the speaker using the spudger.
- Lift the speaker out of its designated area.

To reassemble your device, follow these instructions in reverse order with your new speaker.