



Dell Latitude E4300 CPU Cooling Fan Replacement

If your Dell Latitude E4300 is overheating, this guide will help you replace the CPU cooling fan.

Written By: Maritza Martinez



INTRODUCTION

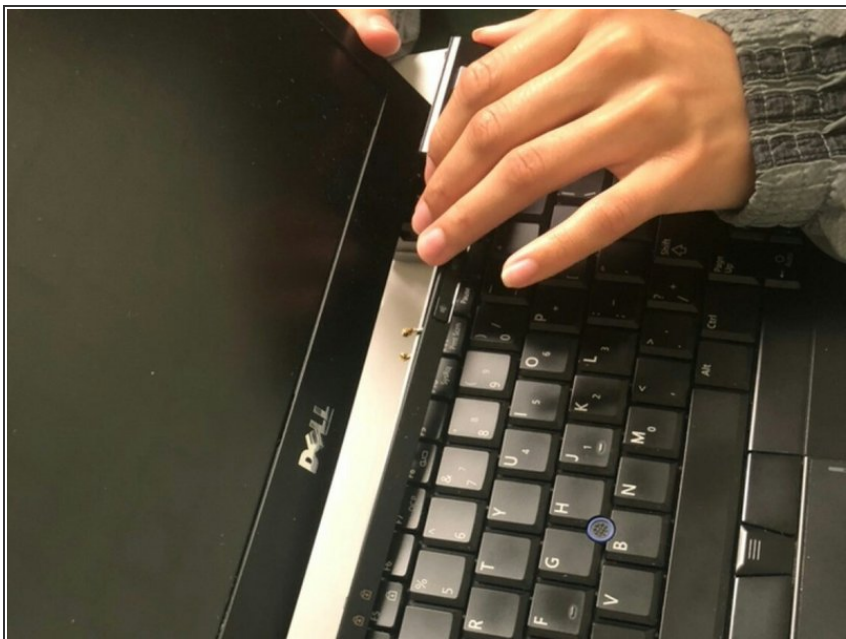
The CPU cooling fan is used to cool down the Dell Latitude E4300's central processing unit. The CPU is an electronic circuitry that carries out the computer's programs. There are some occasions in which the fan can collect dust or break down. When this occurs, the CPU will not receive the cooling it needs and your laptop will begin to overheat. If you are having a constant issue with overheating, try following this guide to replace your cooling fan.



TOOLS:

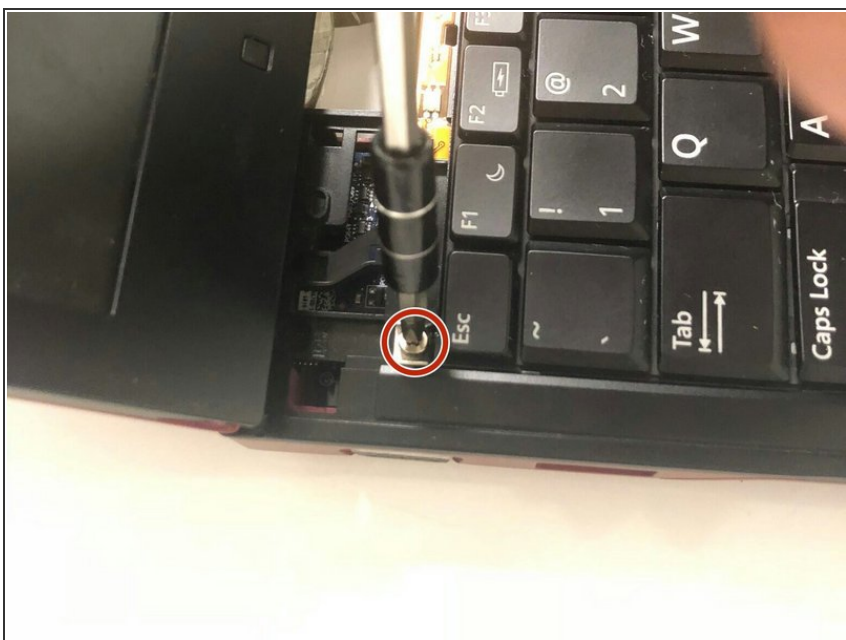
- [Phillips #1 Screwdriver](#) (1)
-

Step 1 — Keyboard



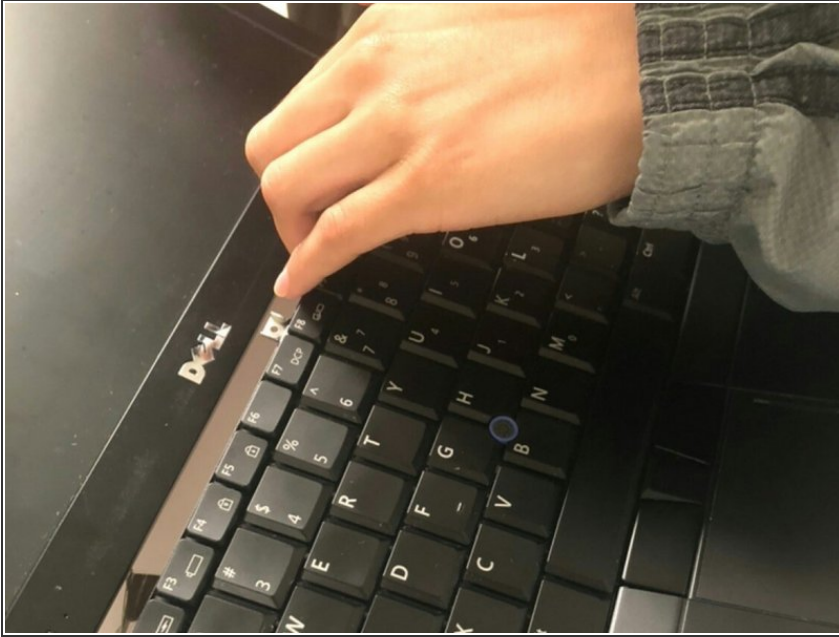
- Open the laptop and remove the small panel located above the keyboard.

Step 2



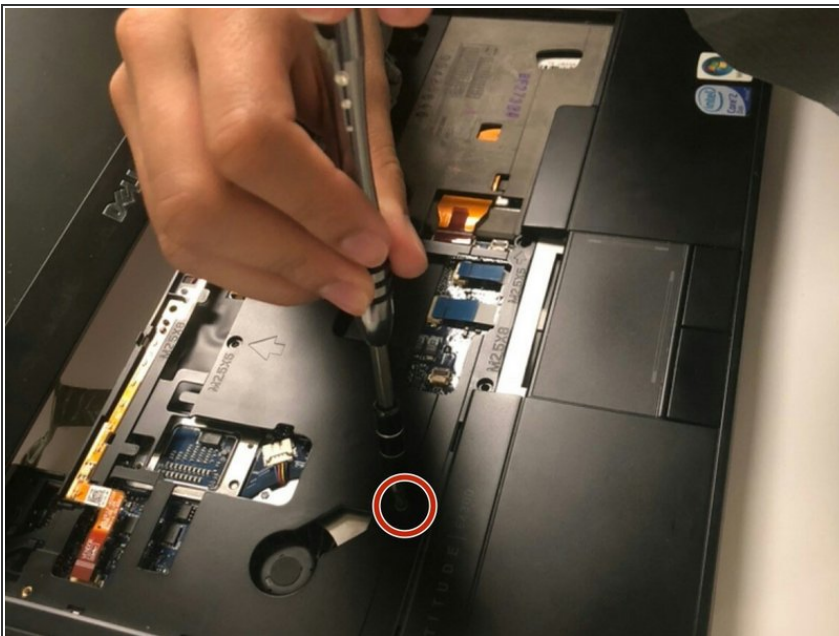
- Using a Phillips 1 Screwdriver, unscrew the three M2x3-mm screws located above the keyboard where the small panel was originally.

Step 3



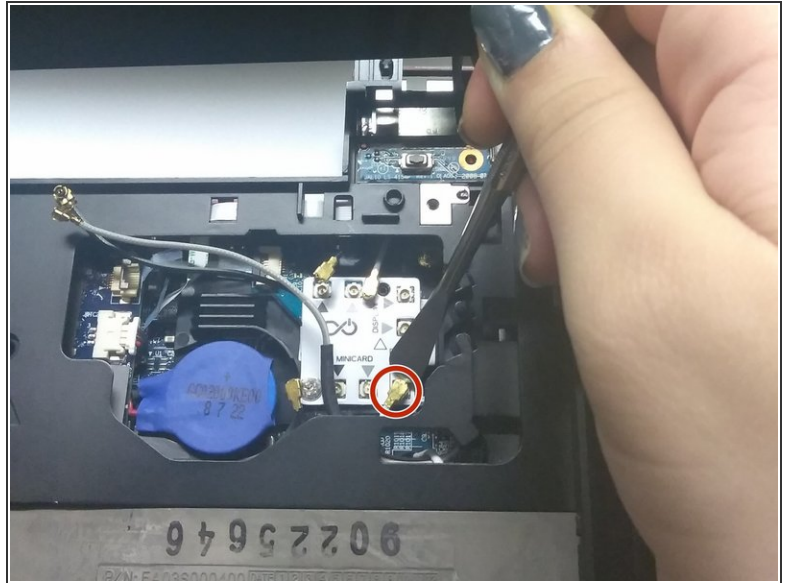
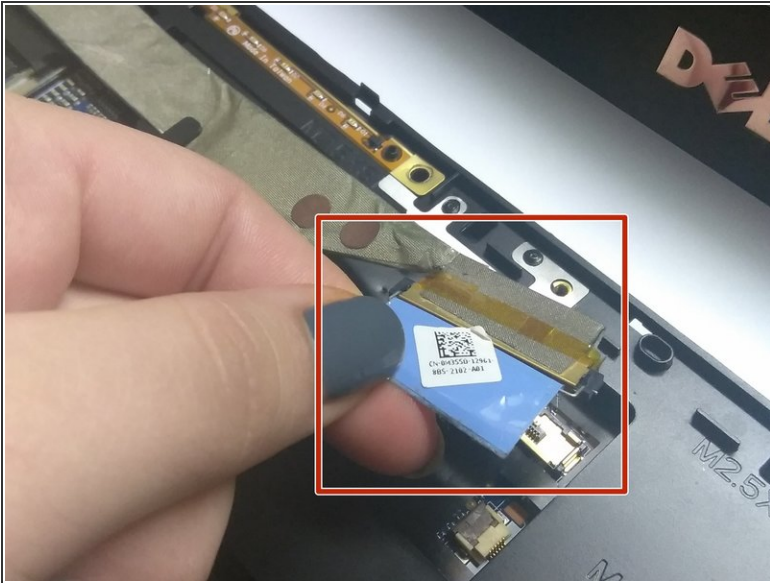
- Pull off keyboard forward and then outwards.
- ⓘ The keyboard is fragile, so make sure you pull the keyboard off carefully.

Step 4 — Keyboard Docking Component



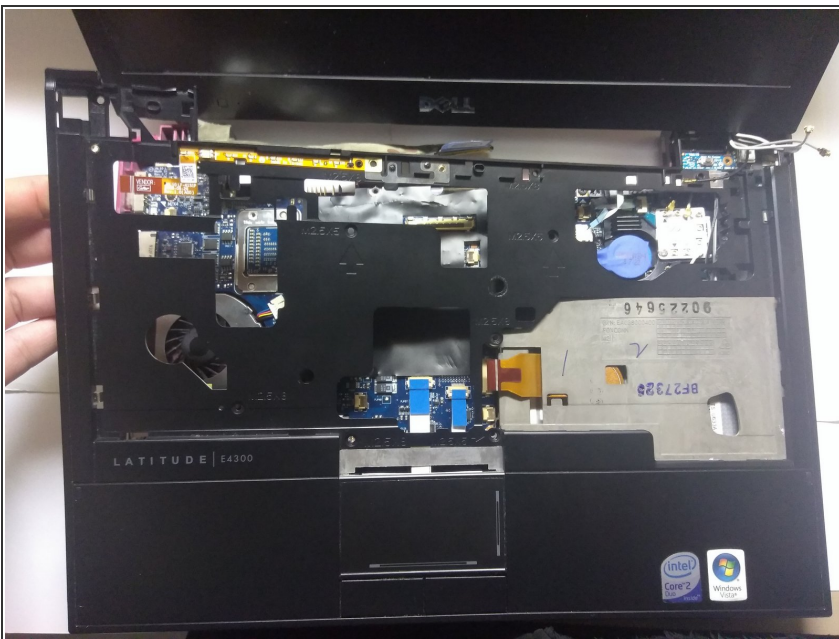
- With your Phillips 1 screwdriver, unscrew the five M2.5x5-mm screws and the five M2.5x8-mm screws that lie underneath the keyboard panel.
- Be aware there are two deeply recessed screws on both sides to the rear of this panel. There are also two screws externally on the rear face either side of the battery that hold the monitor on and pass through this panel, support the screen when you remove these. There are also two screws above the hard drive bay that need to be removed.

Step 5



- Remove additional wires located within the panel.
- ⓘ For the smaller wires, try using a spudger for easier access.

Step 6



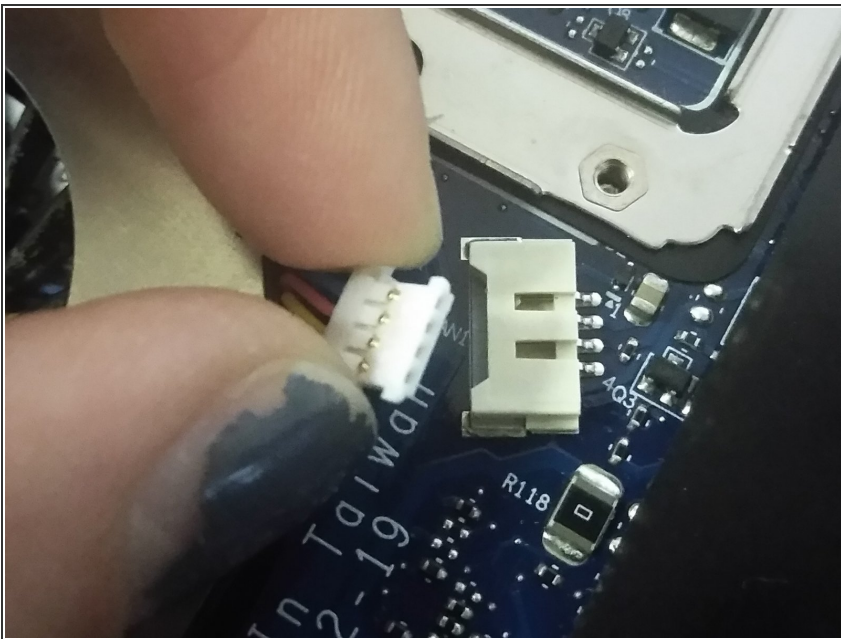
- Lift the keyboard panel to separate the component from the rest of the device.

Step 7 — CPU Cooling Fan



- Using a Phillips 1 Screwdriver, remove the two M2.5x5-mm screws located on opposite sides of the fan.

Step 8



- Disconnect the wires that connect the fan to the rest of the computer.

Step 9



- Lift the fan upwards and remove it from the device.

To reassemble your device, follow these instructions in reverse order.