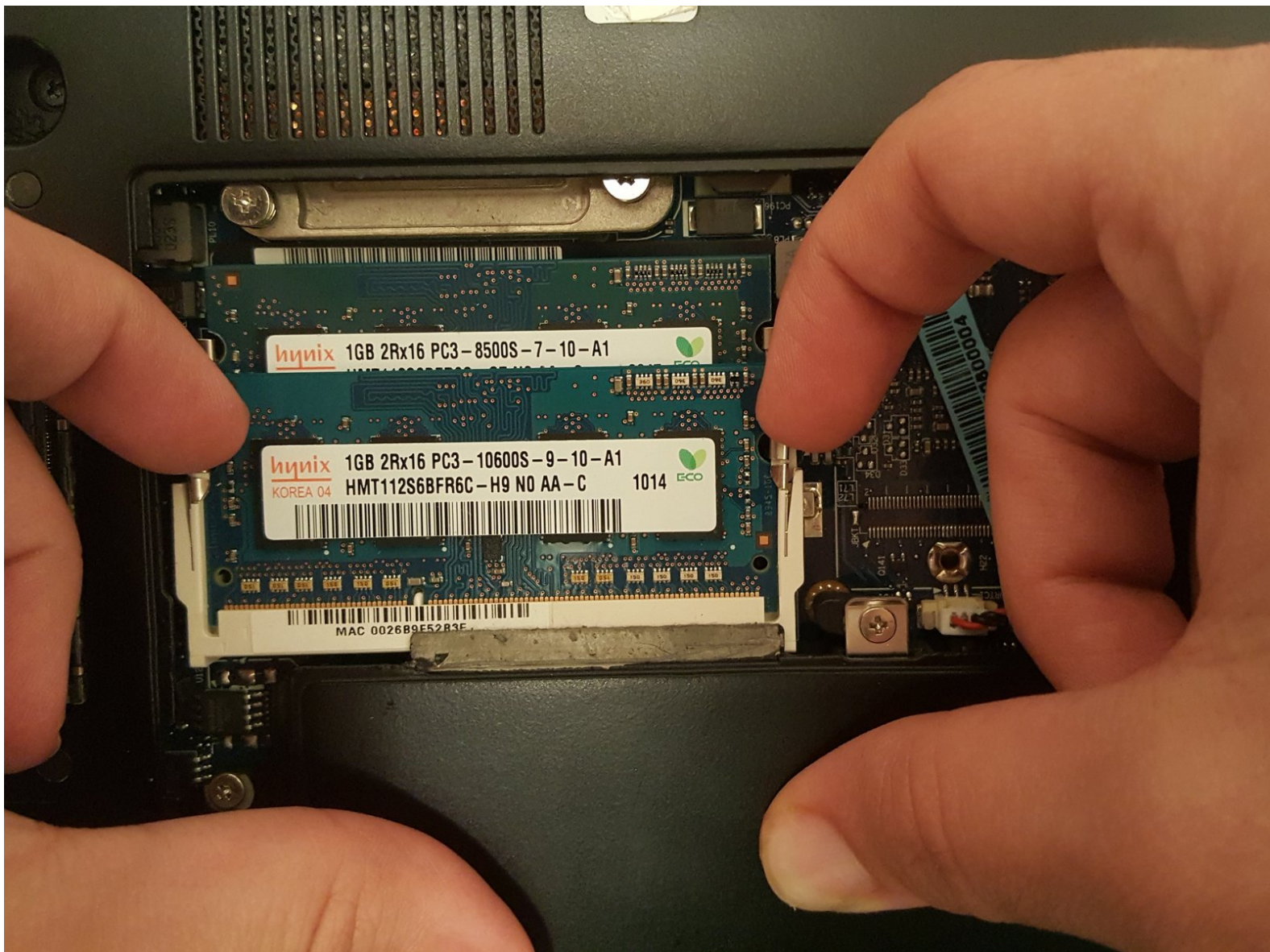




# Dell Latitude E4310 RAM Replacement

To replace the RAM (memory) in your Dell Latitude E4310, follow this guide.

Written By: Jordan Jones



---

## INTRODUCTION

If your laptop is experiencing slow boot times, poor performance, display issues, or won't boot at all, it may be time to replace the RAM, also referred to as the memory.

To replace the RAM on the Dell Latitude E4310, follow this guide.



### TOOLS:

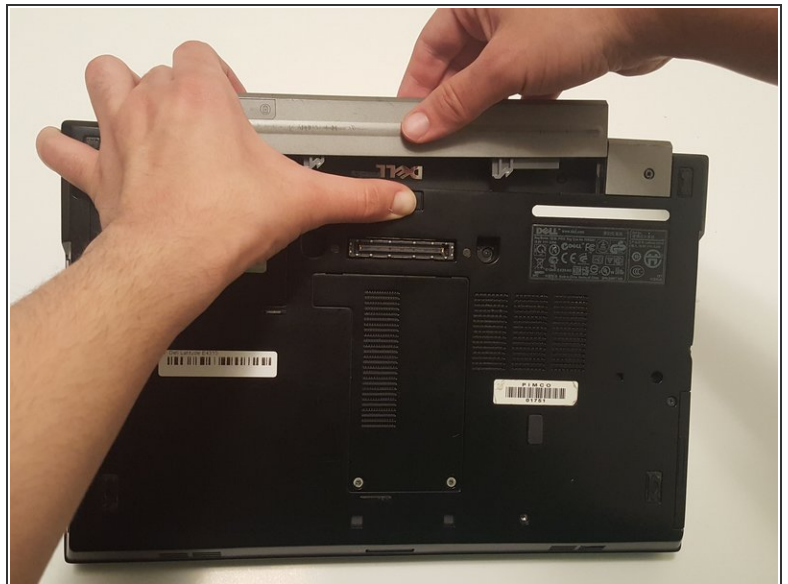
- [Phillips #1 Screwdriver](#) (1)
-

## Step 1 — Battery



- Power down the laptop and remove all power cords.

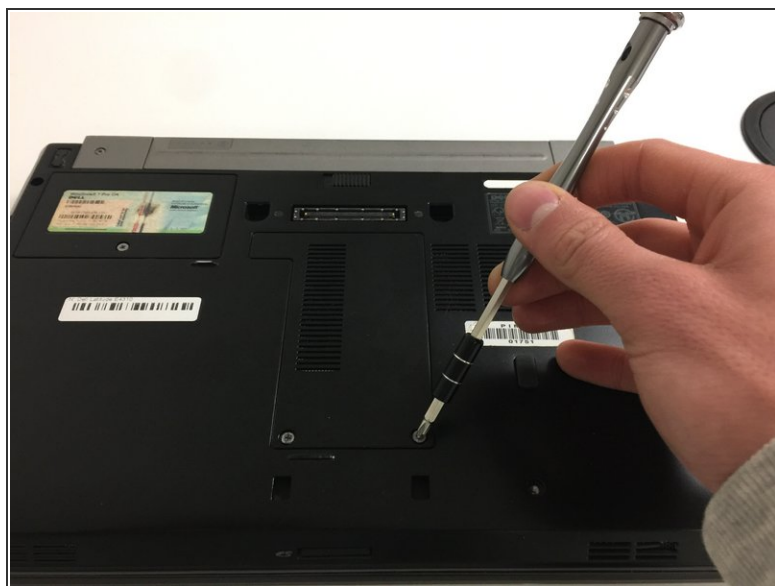
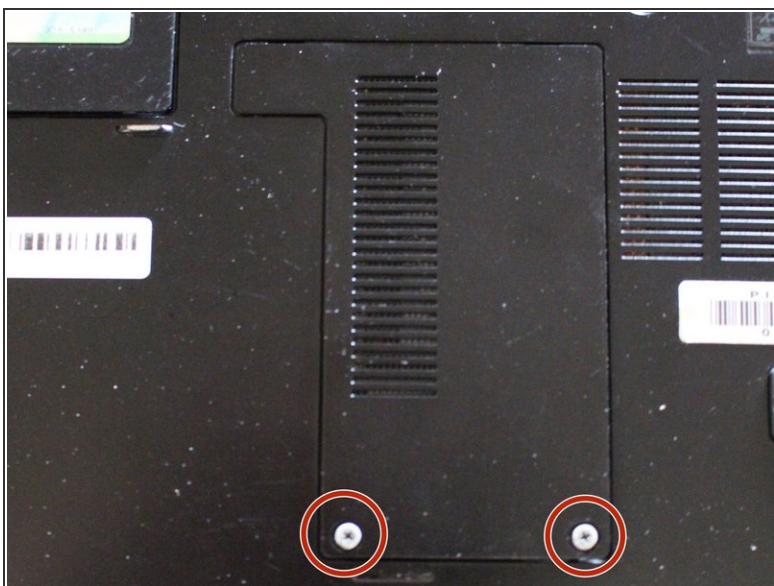
## Step 2



- Push in the battery release button with your thumb.
- Pull up on the battery to remove.

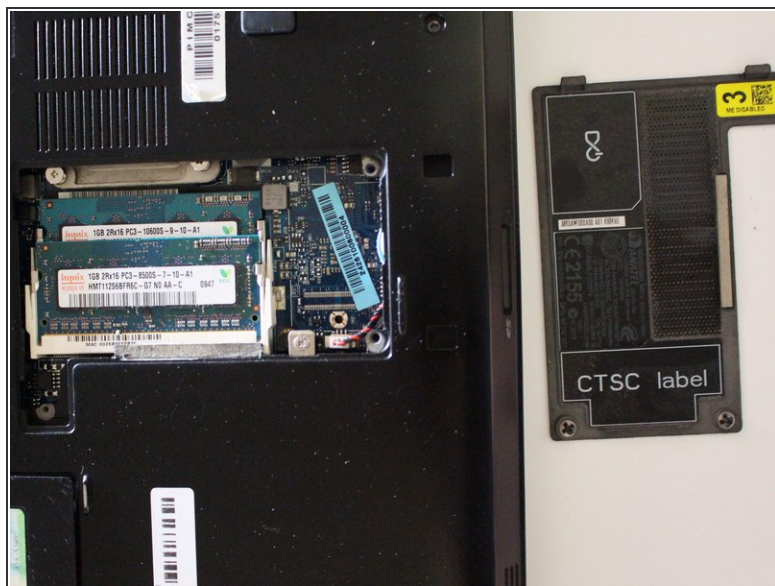


### Step 3 — Memory Door



- Unscrew the two 4mm Phillips #1 screws.

### Step 4



- Lift up the panel with your finger.
- ⓘ The screws are clipped to the panel and will remain attached.

## Step 5 — RAM



- Pry the two metal clips away from the RAM module until the module pops out of place.

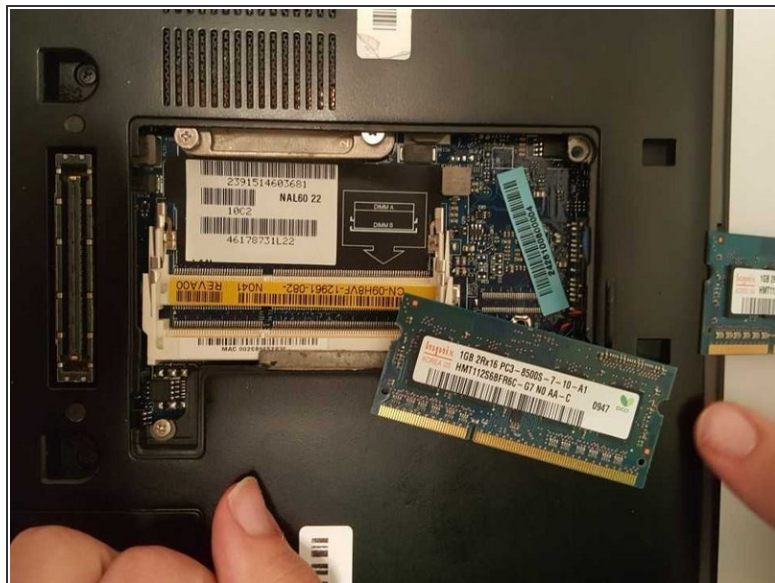
## Step 6



- Slide the RAM backwards out of its socket to remove.



## Step 7



- Repeat steps 1 and 2 to remove the second RAM module.

To reassemble your device, follow these instructions in reverse order.