



Dell Latitude E5450 Lower Case Replacement

This guide will show you how to remove the lower case of a Dell Latitude E5450.

Written By: Taylor Dixon



INTRODUCTION

This guide will show you how to remove the lower case of a Dell Latitude E5450.



TOOLS:

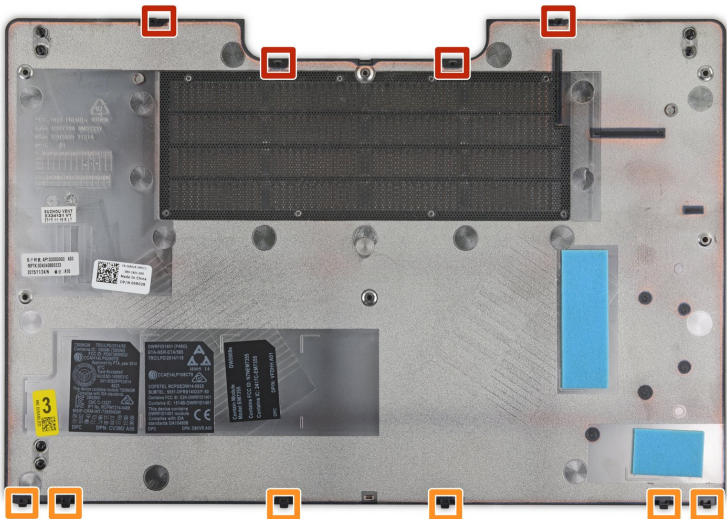
- [Phillips #0 Screwdriver](#) (1)
 - [Spudger](#) (1)
-

Step 1 — Unscrew the Lower Case



- Remove the six Philips #0 screws from the lower case.
- ⓘ These screws are all 5.6 mm long, but it's still a good idea to [keep track of them](#) and make sure they go back in their proper holes!

Step 2



- ⓘ This photo shows the location of the ten clips that hold the lower case in place. Take note of the location of

the clips, and refer back to this step if your lower case gets stuck during removal.

- Four clips hold the upper half of the case in place and can be released by prying around them with a spudger.
- The other six clips along the bottom edge **can not** be released by prying at them. Instead, they come free by sliding the whole case upward, as shown in [step 5](#) below.

Step 3



- Insert the flat edge of a spudger into the [small divot](#) along the top edge of the case, just below the docking station port.
- Pry up to release the two central clips along the upper edge of the case.

Step 4



- Use your spudger to pry up the remaining clips along the top edge.

Step 5 — Remove the Lower Case



- Slide the lower case upward and remove it.

Step 6



- ✦ When reinstalling the lower case, make sure you slide the bottom edge (the edge without the cutout) into place first before snapping the rest of the clips shut.

To reassemble your device, follow these instructions in reverse order.

Take your e-waste to an [R2 or e-Stewards certified recycler](#).

Repair didn't go as planned? Check out our [Dell Latitude answers community](#) for troubleshooting help.