



Dell Latitude E5500 Bluetooth Card Replacement

Replacement guide for the Bluetooth card in a Dell Latitude E5500.

Written By: Richard Harrison



INTRODUCTION

If the user would like to replace a faulty Bluetooth card, or one that is not powerful enough, this guide will give step by step information on how to achieve this.

TOOLS:

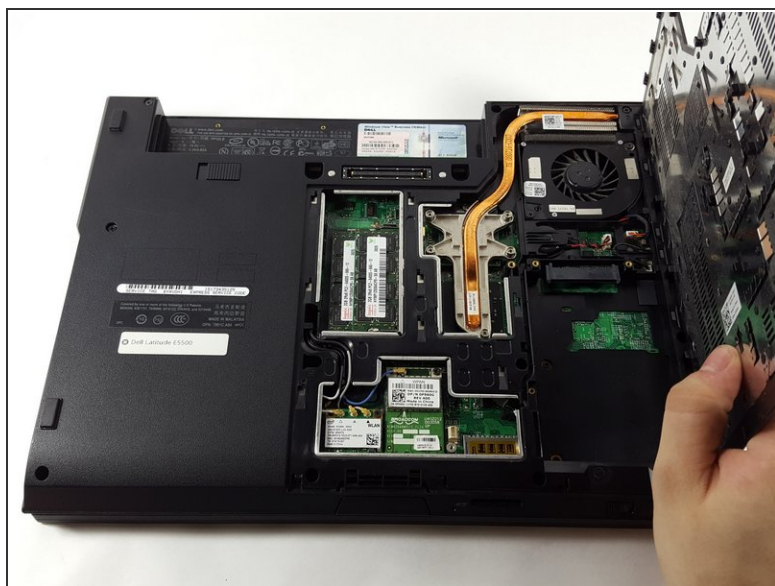
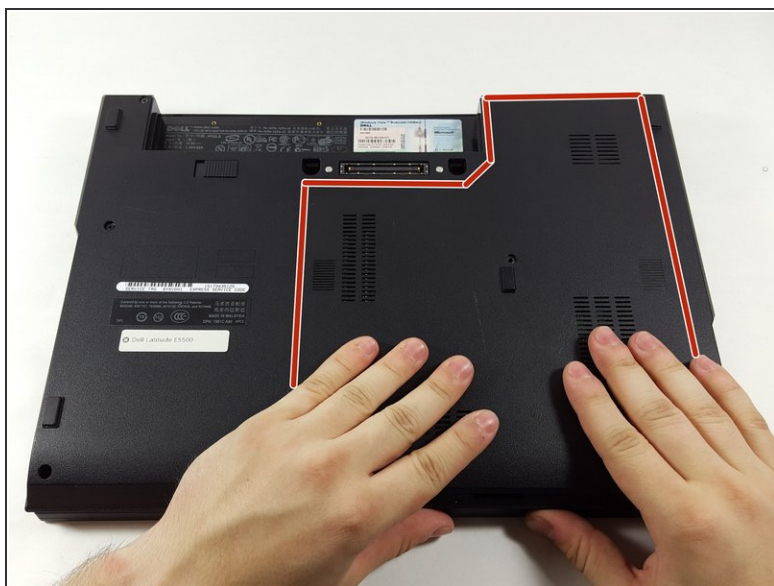
- [Phillips #1 Screwdriver](#) (1)
 - [Tweezers](#) (1)
-

Step 1 — Bluetooth Card



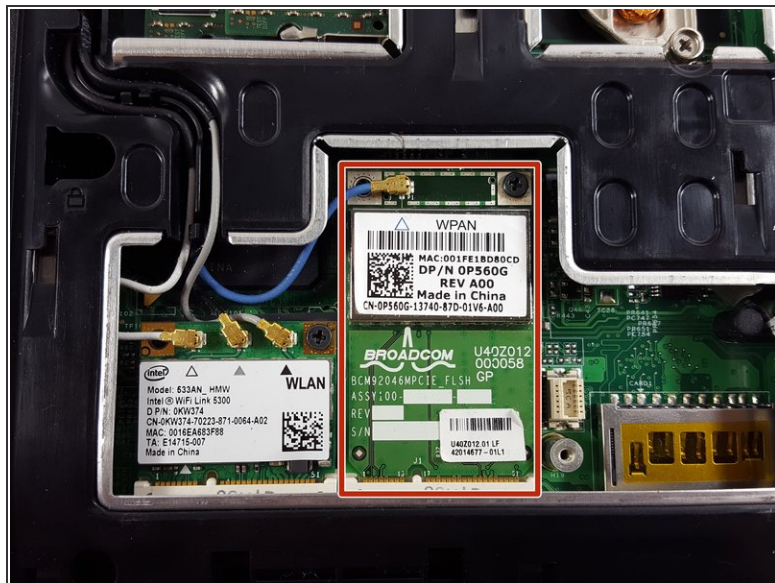
- Unscrew the single 3.5mm Phillips #1 screw that holds on the bottom plate of the device.

Step 2



- Place your hands on the plate and pull it toward yourself.
- The plate will pop out of place and may then be removed.

Step 3



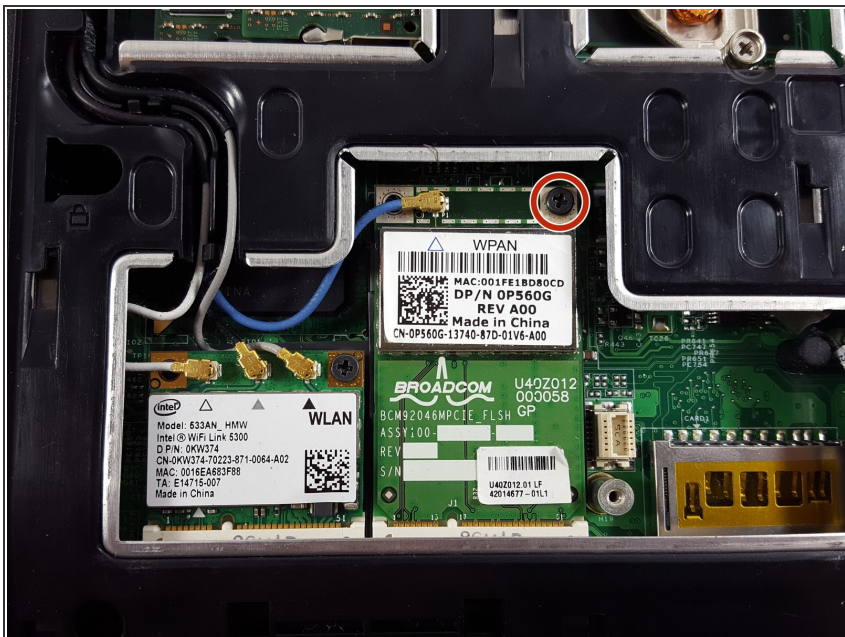
- The Bluetooth card is located near the front of the device, and is the expansion card with one antenna attached to it.

Step 4



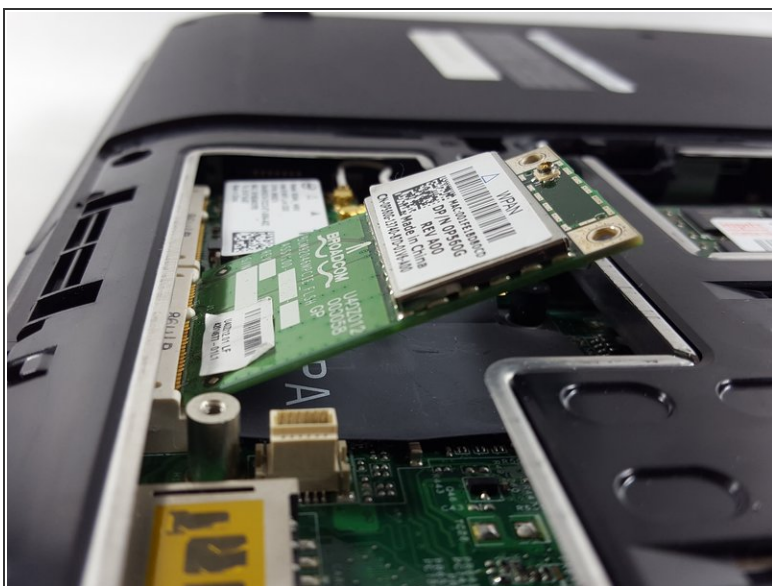
- Remove the wire connecting the card to the laptop with a pair of tweezers.

Step 5



- Unscrew the 4mm Phillips #1 screw that secure the card in place.

Step 6



i After completing steps 4 & 5, the card will lift up at an angle as shown.

- Once the card has popped out of place, it can be gently removed.

To reassemble your device, follow these instructions in reverse order.