



Dell Latitude E5530 LCD display Replacement

Hello! I am Cooper, if you dropped your laptop and the LCD broke, I will show you how to replace it!

Written By: Cooper Schwartz

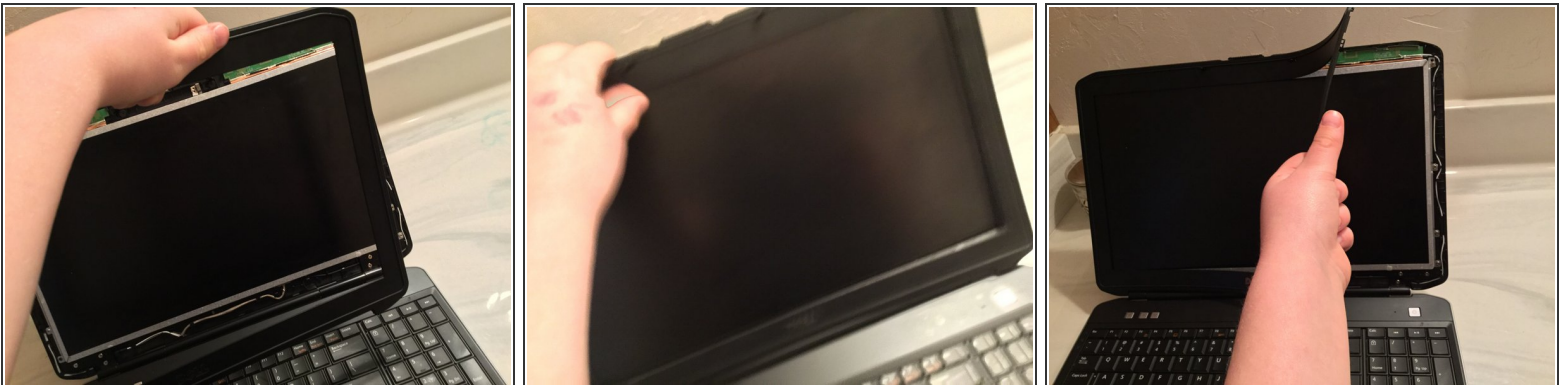


Step 1 — Take out the battery



- Using your fingers, slide the plastic switches away from the center and pull out the battery using the grips on the back of the laptop battery. This will make it so you don't short anything.

Step 2



- Using a plastic pry tool or your fingers, pry off the plastic bezel surrounding the LCD, starting at the bottom and finish with the top, then pull the bezel off of the frame. Do not use a metal pry tool, it will scratch the bezel and replacements are rare.

To reassemble your device, follow these instructions in reverse order.