



Dell Latitude E6330 CD Drive Replacement

If you want to replace the CD Drive for your Dell Latitude E6330 follow this tutorial.

Written By: Brett Murray





TOOLS:

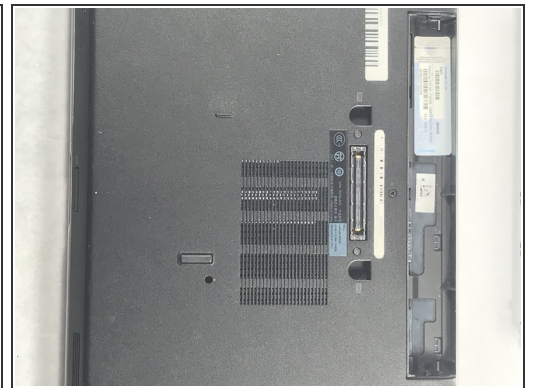
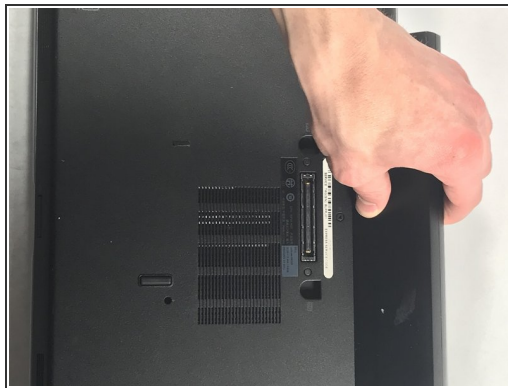
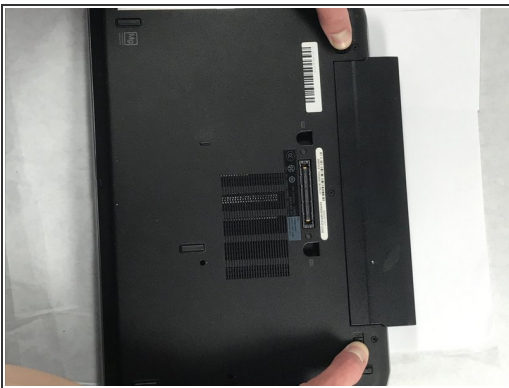
- [Phillips #00 Screwdriver](#) (1)
-

Step 1 — Battery



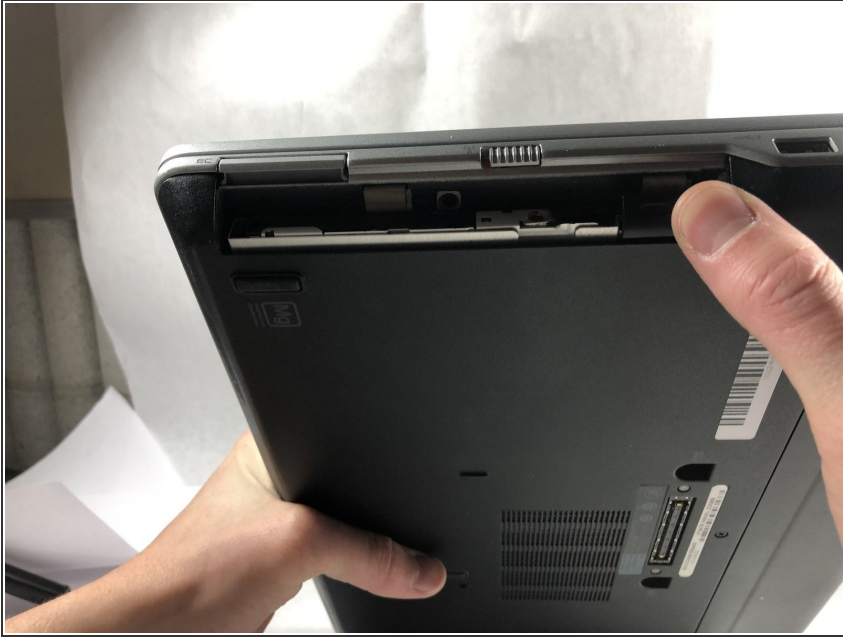
- Turn off computer

Step 2



- Slide latches out to unlock and remove battery.

Step 3 — CD Drive



- Click the button on the side of the disk.

Step 4



- Carefully slide out the disk drive

To reassemble your device, follow these instructions in reverse order.