



# Dell Latitude E6330 Hard-Drive Replacement

This guide will provide instructions for the removal and replacement of the hard-drive for the Dell Latitude E6330.

Written By: John Donahue





## TOOLS:

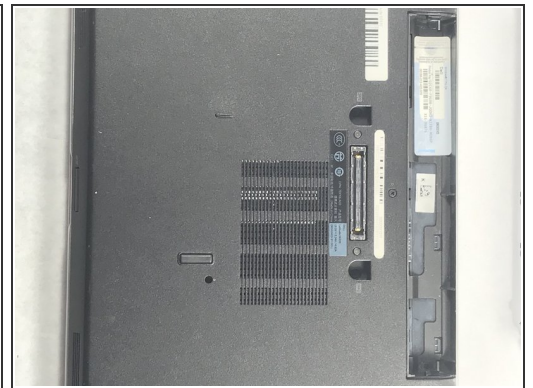
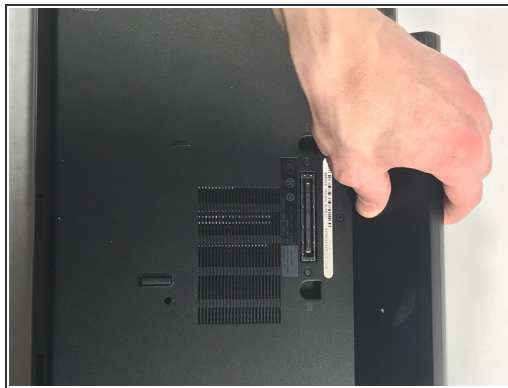
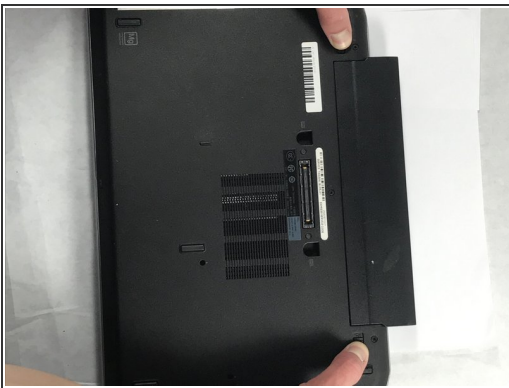
- [Phillips #00 Screwdriver](#) (1)
-

## Step 1 — Battery



- Turn off computer

## Step 2



- Slide latches out to unlock and remove battery.

## Step 3 — Hard-Drive



- Flip the laptop over so the bottom face is facing up.
- ❗ Only follow the battery replacement guide up to removal. You **do not** need to replace the battery as well if you are replacing the hard-drive. Removal is only done to prevent damage to the laptop.

## Step 4



- Unscrew the two 2.5mm x 5mm screws located at the front left corner of the laptop.

## Step 5



- Slide hard drive & caddy out of its slot

To reassemble your device, follow these instructions in reverse order.