



A photograph of the back of a black electronic device, likely a portable media player, showing two red-outlined rectangular areas on the top edge. The left area contains a small, dark, rectangular component, and the right area contains a larger, dark, rectangular component. The device is placed on a surface with a bookshelf visible in the background.

INTRODUCTION

Because the latitude E6400 has just one screw to remove to access the upgradable guts, this process takes no more than 5 minutes to do. It's also very easy.

Pictures and text written by ouimetnick.



TOOLS:

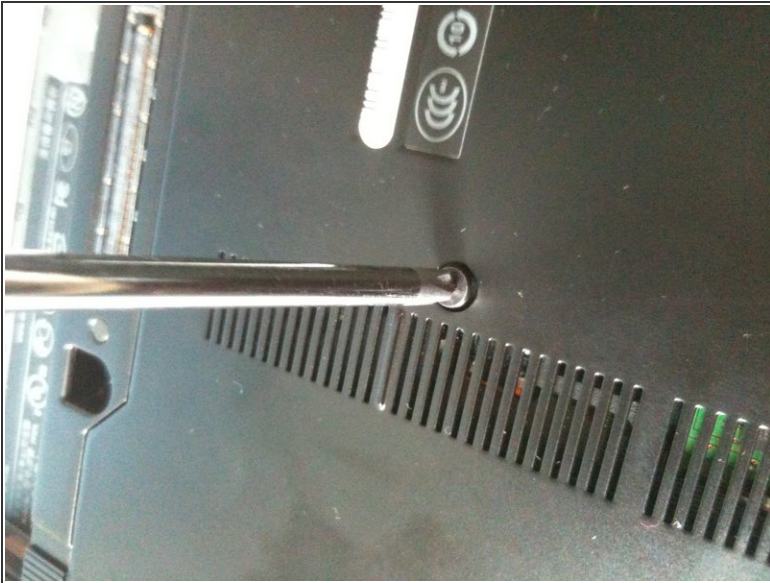
- [Phillips #1 Screwdriver](#) (1)
-

Step 1 — RAM



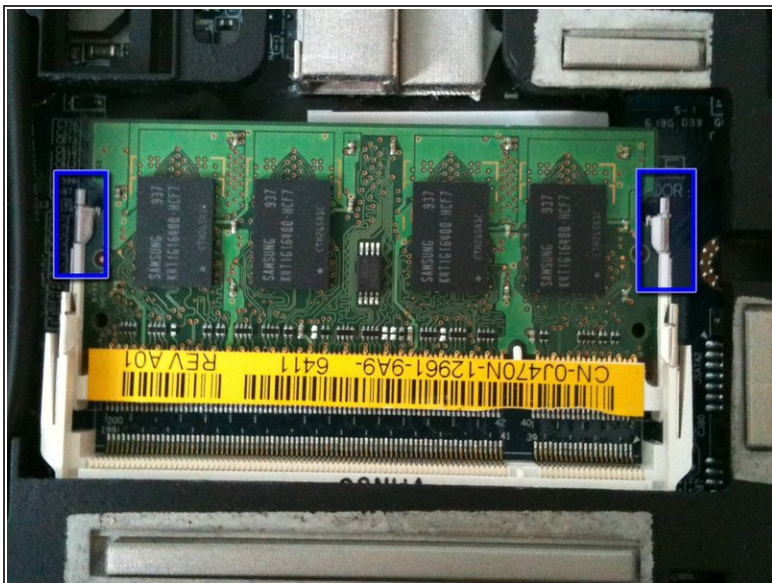
- Simultaneously slide the battery latches (outlined by the red box) to the dock connector in the middle.
- This will release the battery. Just slide the battery away from the computer.
- Open up the computer and press and hold the power button for 5 seconds. This drains any power left inside the computer.
- This is important, as if electricity remains in the notebook, it can shock you and damage the logic board.

Step 2



- Loosen the center screw with a philips screw driver. This is the only screw that needs to be loosened.
- It can't be removed as it is captive the the bottom plate.
- Now slide the plate away from the dock connector.

Step 3



- Locate the RAM slot.
- the system can hold 2 RAM modules.
- This unit has 1 module. It is a 1GB one.
- Push the metal spreaders (shown in the blue rectangle) straight away from the RAM module.
- The RAM module should pop up to a 45 degree angle.

Step 4



- Pull the RAM module straight out from the way it was raised. (Once it pops up to a 45 degree angle, pull it straight out from its current position).
- Insert the new RAM into the empty slot, ensuring that the notch in the RAM lines up with the slot (see picture).

Step 5



- Slide the bottom plate on.
- Slide it to the rear of the notebook. (battery compartment)
- tighten the screw.
- Do not over-tighten. Doing so will strip the screw.

Step 6



- Slide the battery in until it clicks.
- Press the power button.
- AND it works.

To reassemble your device, follow these instructions in reverse order.