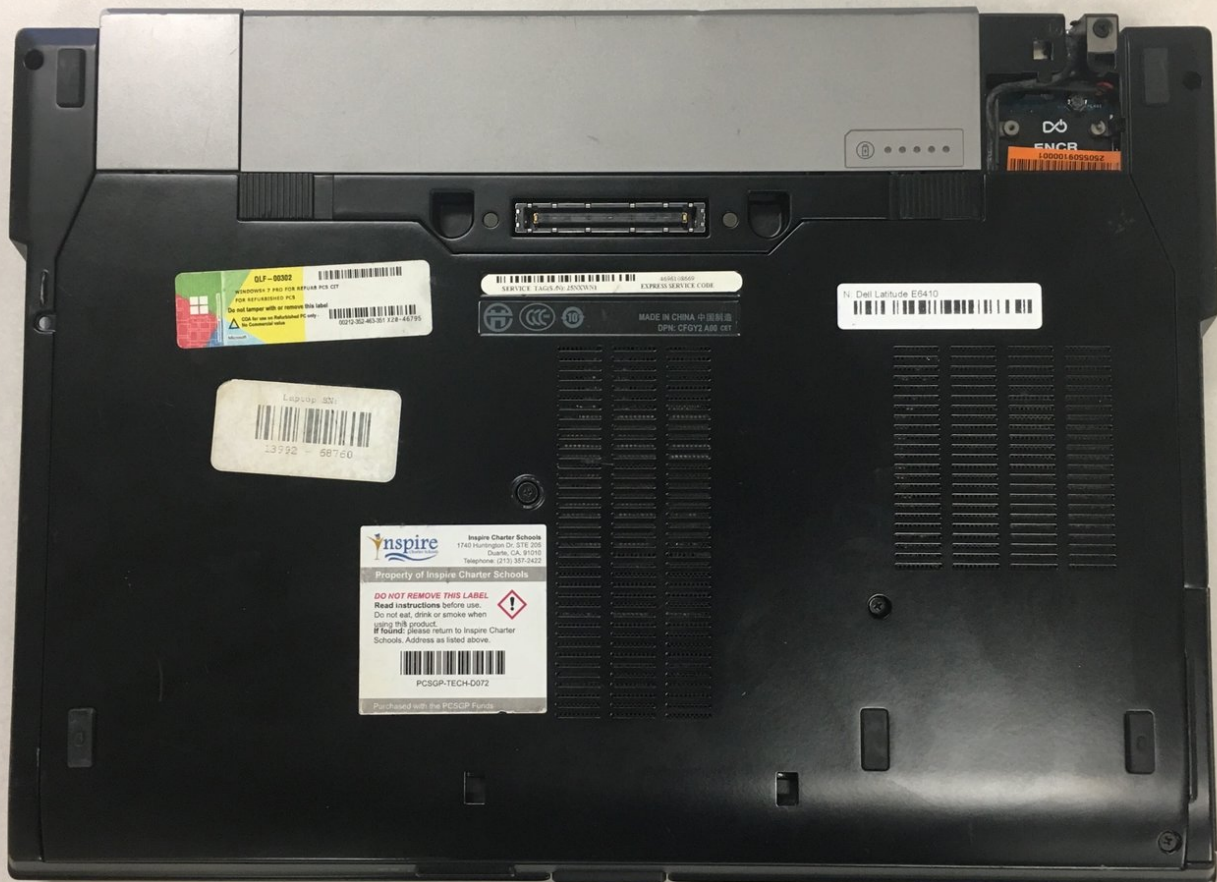




Dell Latitude E6410 Network Card Replacement

This guide will walk you through all the steps necessary to replace your network card.

Written By: Stephen Tate



INTRODUCTION

This guide will walk you through the process of replacing your network card.



TOOLS:

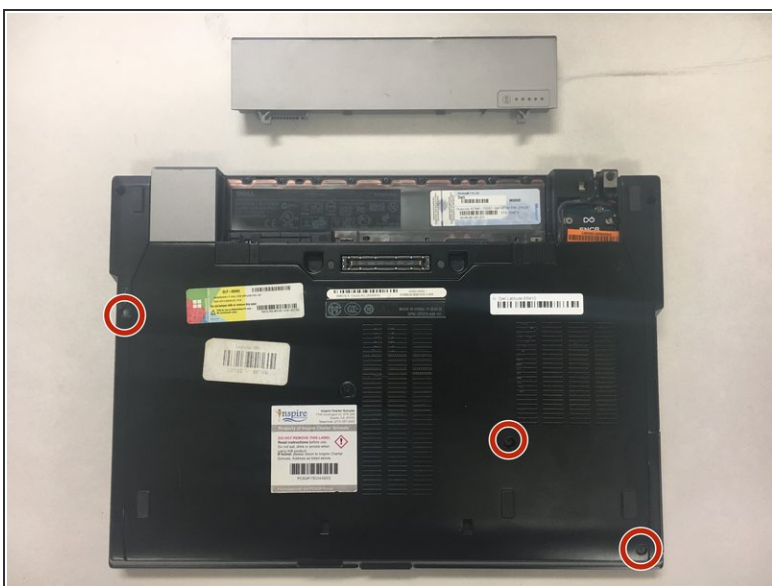
- [Phillips #0 Screwdriver](#) (1)
-

Step 1 — Network Card



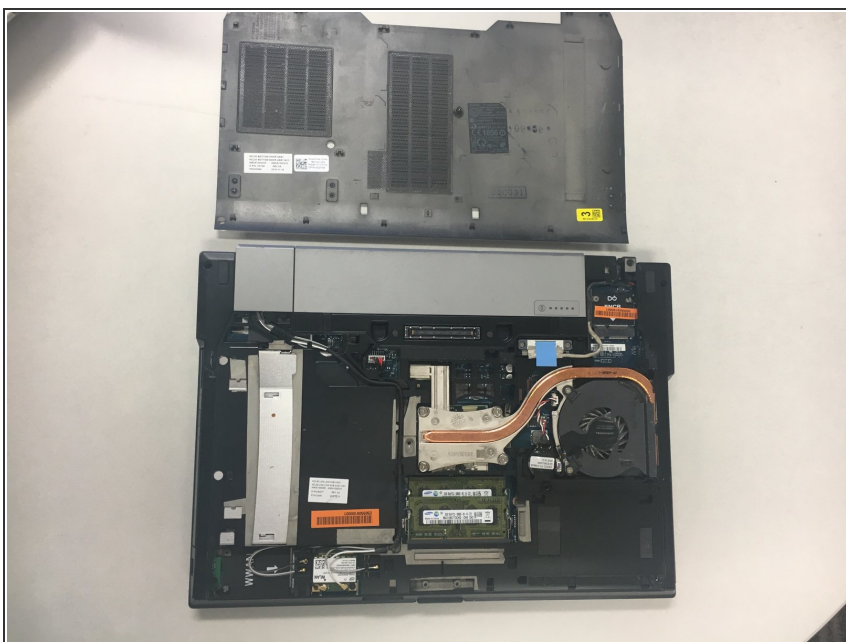
- Remove your computer's power cord and place upside down on your desk.
- [Remove your battery.](#)

Step 2



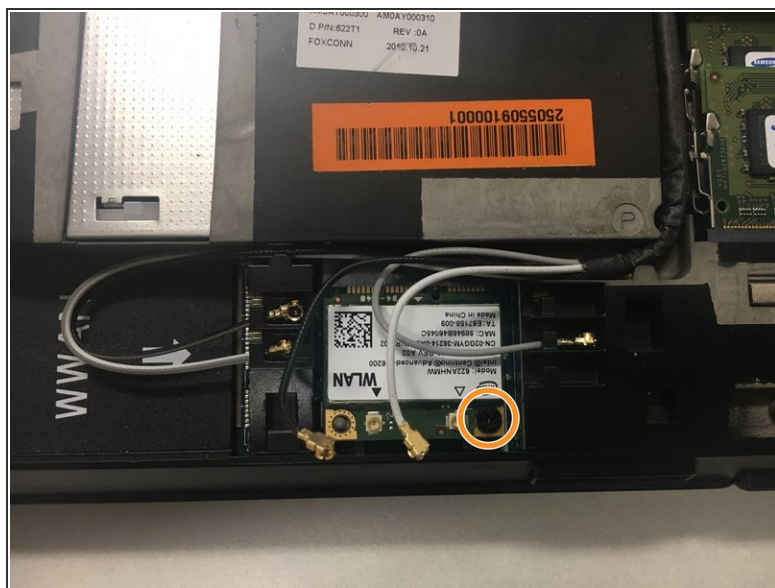
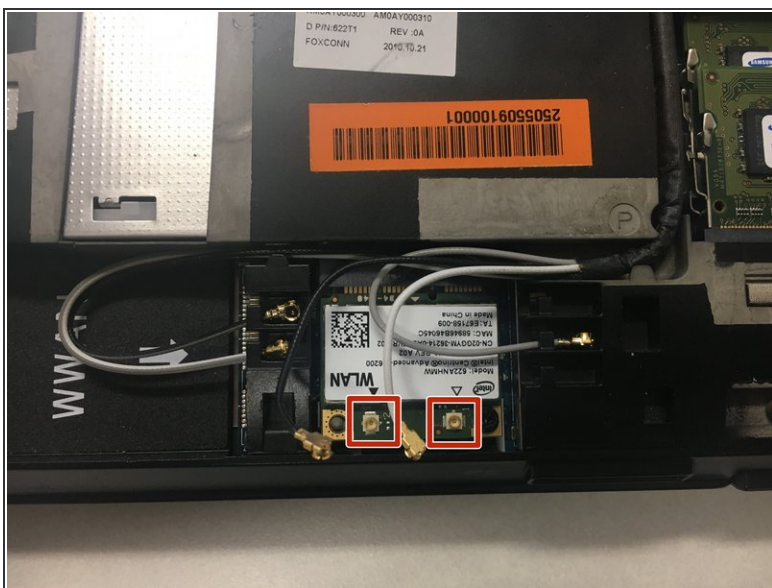
- Remove the following 5mm screws.
- Loosen the middle 5mm screw.

Step 3



- Remove the back cover by sliding it downwards.

Step 4



- Unplug the black and white antenna cables.
- Remove the 3mm screw.

Step 5



- Remove network card.

To reassemble your device, follow these instructions in reverse order.