



# Dell Latitude E6420 CPU Replacement

How to replace the CPU in a Dell Latitude E6420.

Written By: Sam Towe





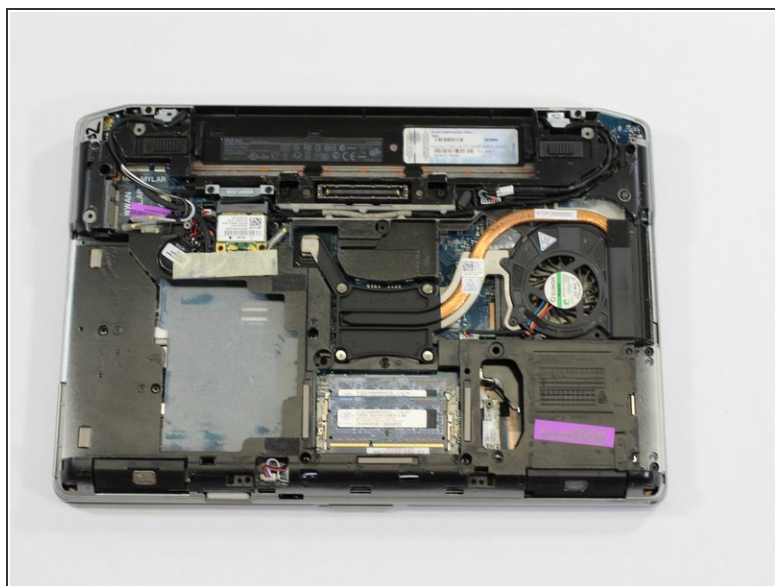


## TOOLS:

- [Phillips #0 Screwdriver](#) (1)
- [Flathead 3/32" or 2.5 mm Screwdriver](#) (1)



## Step 1 — Rear Panel Removal



- Remove the eight screws holding down the rear panel using a Phillips #0 Screwdriver. Carefully remove base cover by hand.

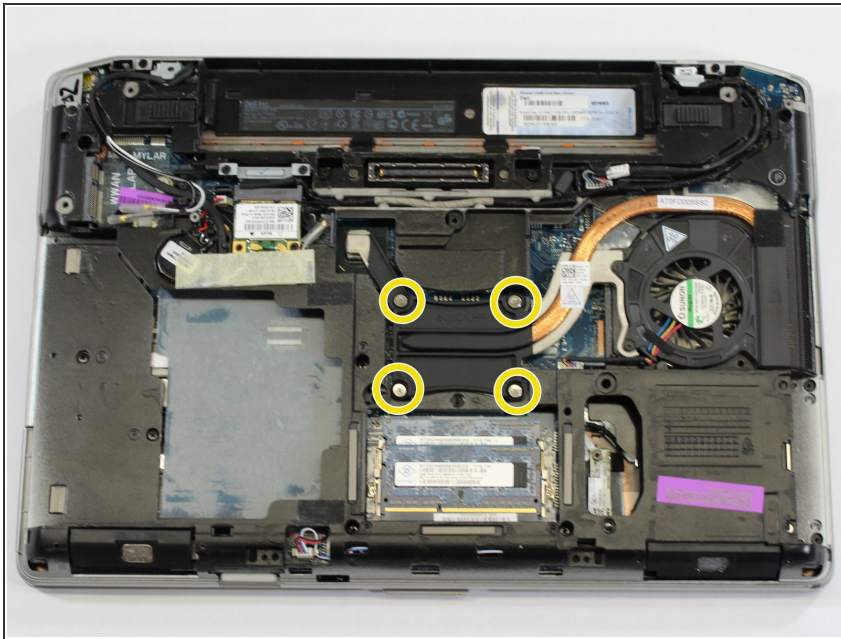
## Step 2 — CPU



- Remove the battery by pushing the highlighted tabs outward, then removing the battery from the device.

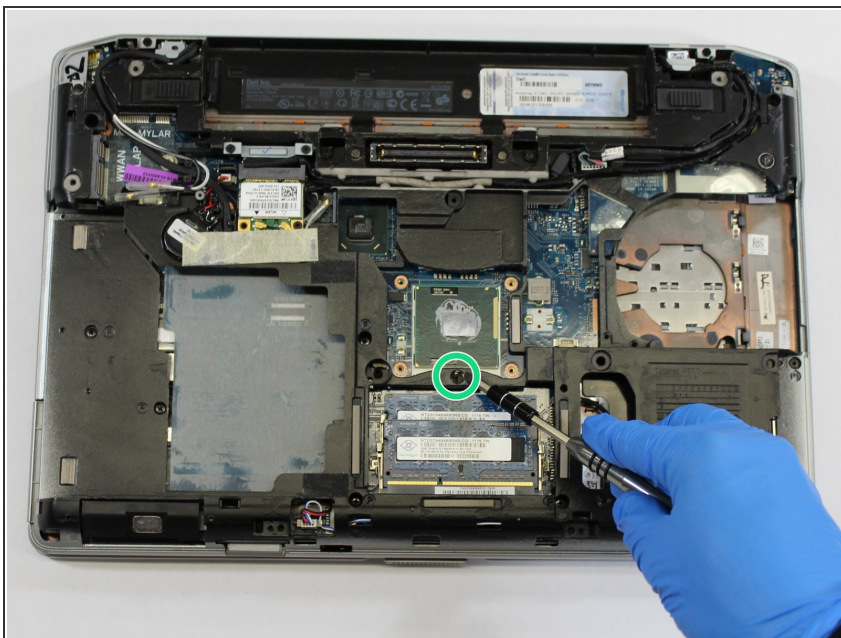


## Step 3



- Remove the four screws securing the heatsink using the Phillips #0 Screwdriver.
- Remove the heatsink.

## Step 4



- Using a small flathead screwdriver, rotate the lock 180 degrees counterclockwise to unlock the CPU.



## Step 5



- Lift the CPU out of the motherboard assembly.

To reassemble your device, follow these instructions in reverse order.