



Dell Latitude E6500 Battery Replacement

This guide will show the user how to replace the faulty battery within the laptop

Written By: Anthony Sands

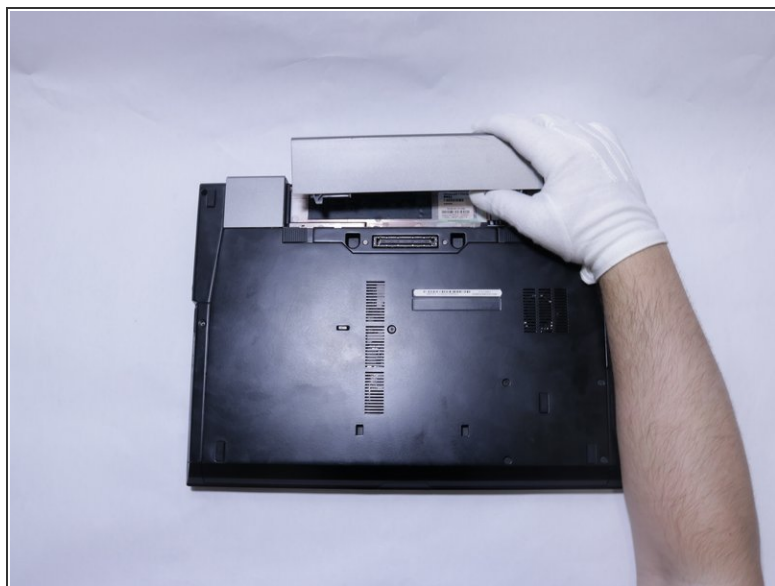


Step 1 — Battery



- Place the laptop on a flat surface.
- Flip the laptop with the hinges facing outward.

Step 2



- Press the two buttons inward.
- Remove battery from its holster.

To reassemble your device, follow these instructions in reverse order.