



Dell Latitude E6500 RAM Replacement

This guide will inform the user of how to replace RAM after failure.

Written By: Anthony Sands





TOOLS:

- [JIS #0 Screwdriver](#) (1)
-

Step 1 — RAM



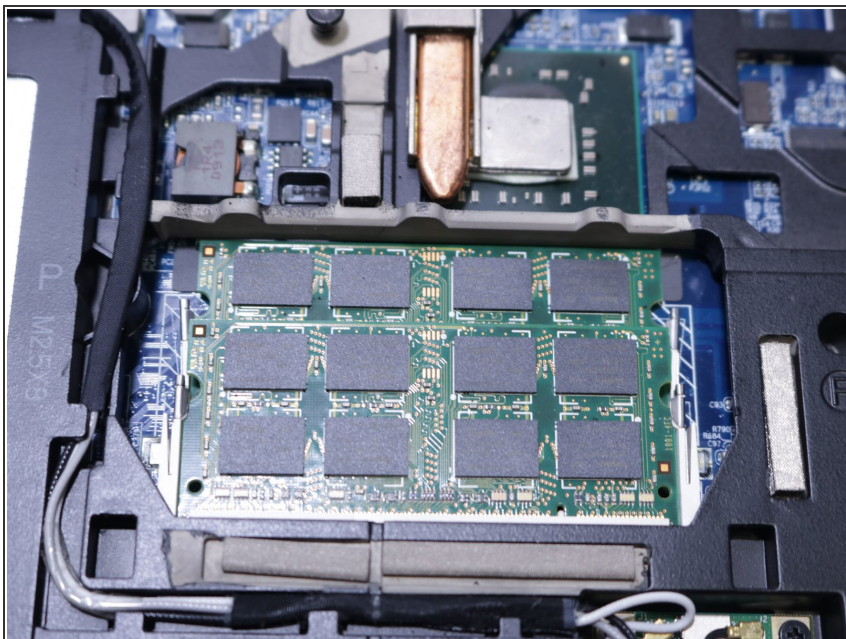
- Turn laptop over with the hinges facing away.

Step 2



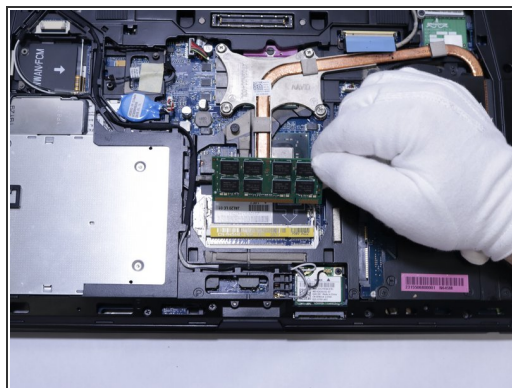
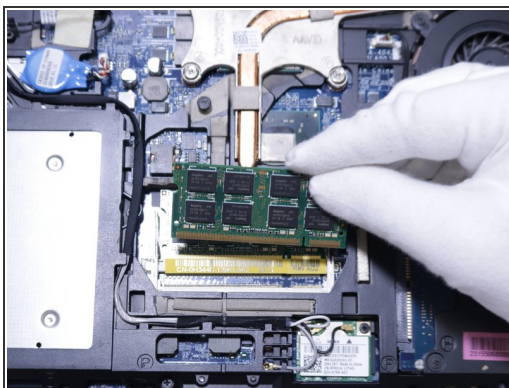
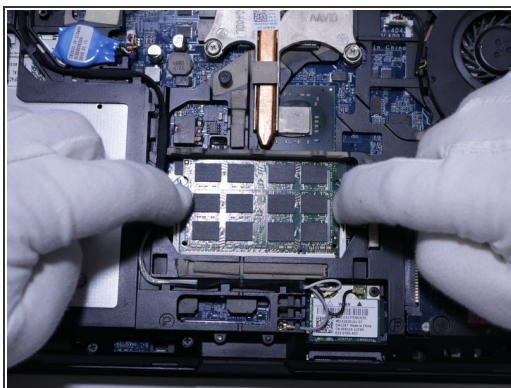
- Use a J0 screwdriver to remove the center screw.
- Slide the back cover towards you to remove.

Step 3



- Locate the 4 hinges.

Step 4



- Push the first two hinges away from the RAM.
- Remove first RAM card from the hinge.
- Push the second two hinges away from the RAM to remove second RAM card.

To reassemble your device, follow these instructions in reverse order.