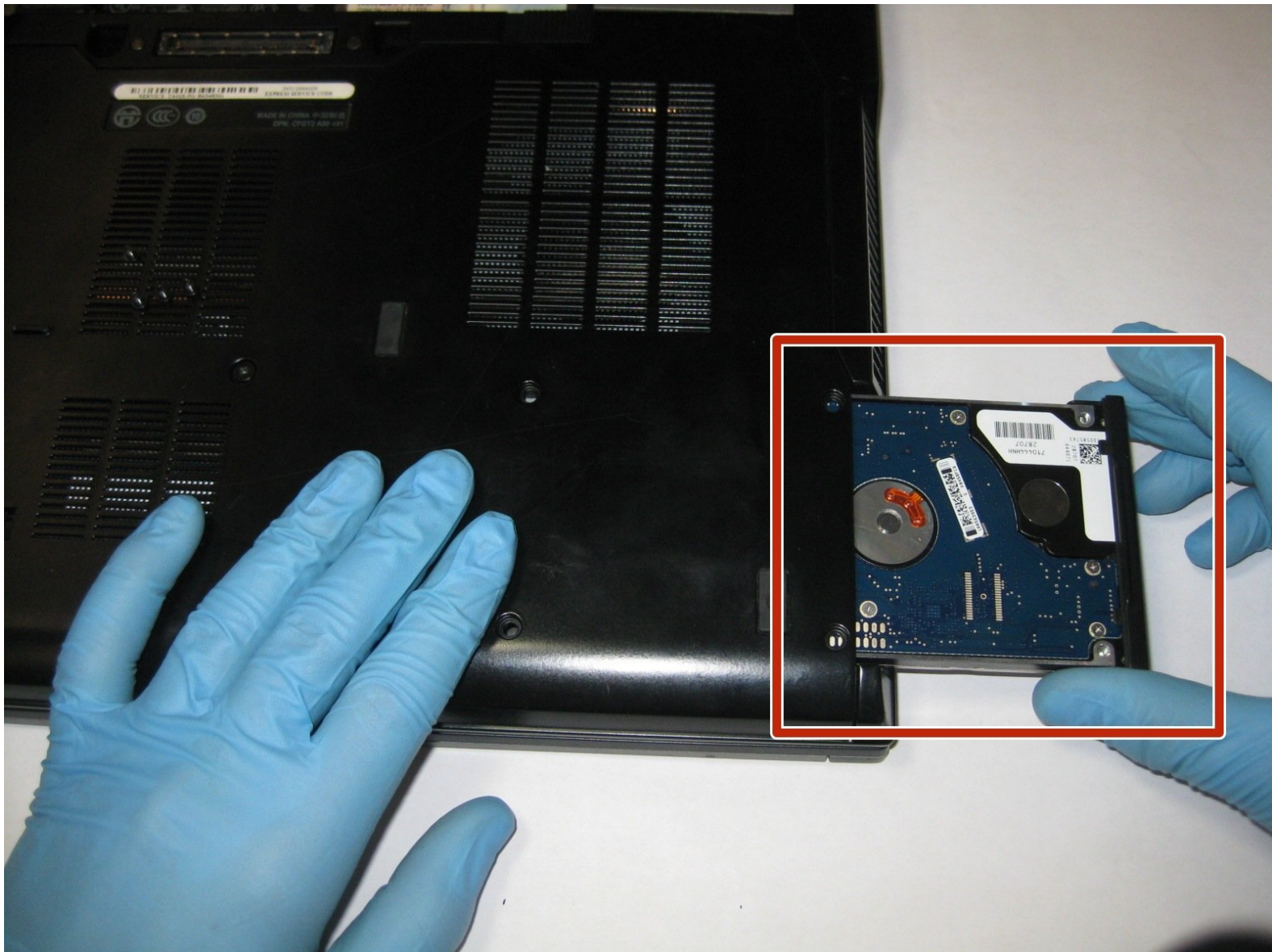




# Dell Latitude E6510 Hard Drive Replacement

Use this guide to replace the hard drive in your Latitude E6510 laptop.

Written By: Noah



---

## INTRODUCTION

This guide will show you how to remove and replace the hard drive in your Dell Latitude E6510 laptop.



### TOOLS:

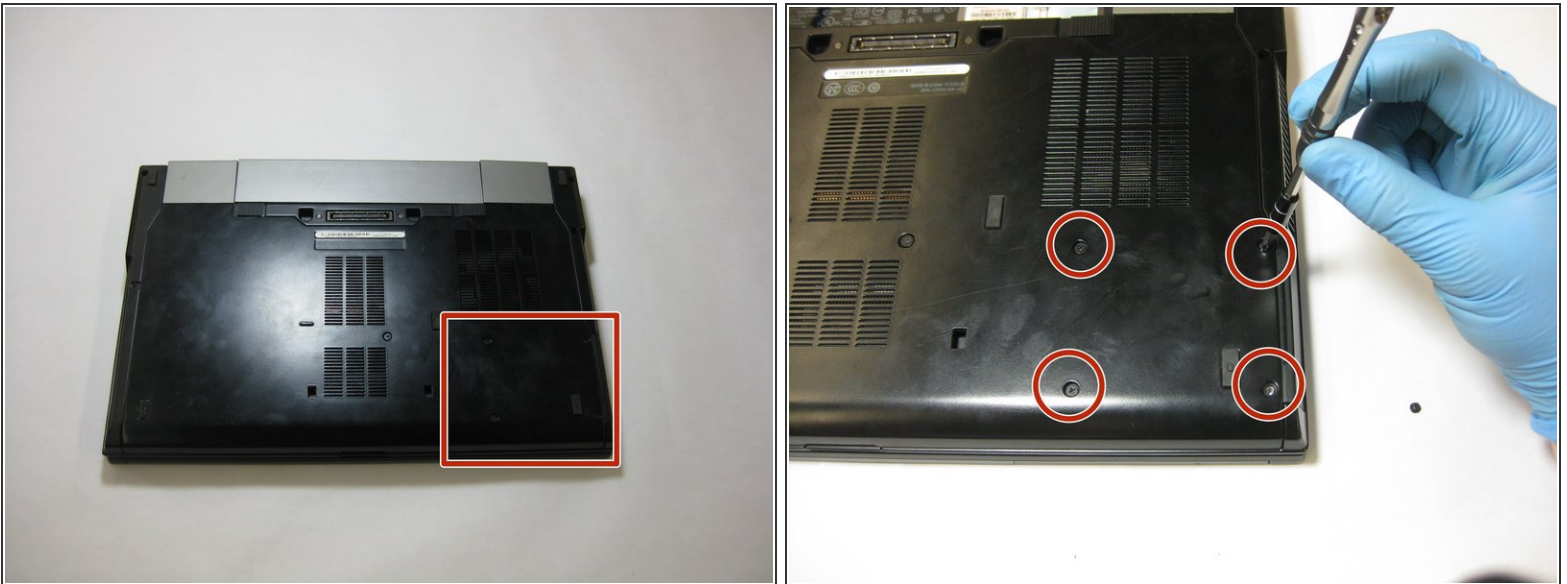
- [Phillips #1 Screwdriver](#) (1)
-

## Step 1 — Hard Drive



- Locate the tabs that lock the battery in place.
- Push tabs towards each other while simultaneously pushing the battery away from the device.

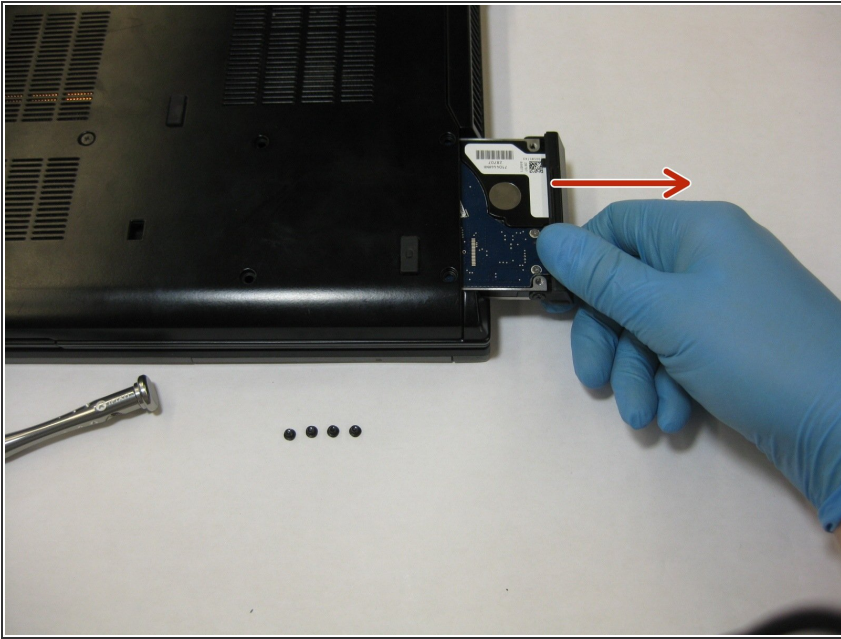
## Step 2



- Locate and remove the four 3.2 mm screws that secure the hard drive located in the bottom righthand side of the device, assuming the device is upside down and battery side on top.

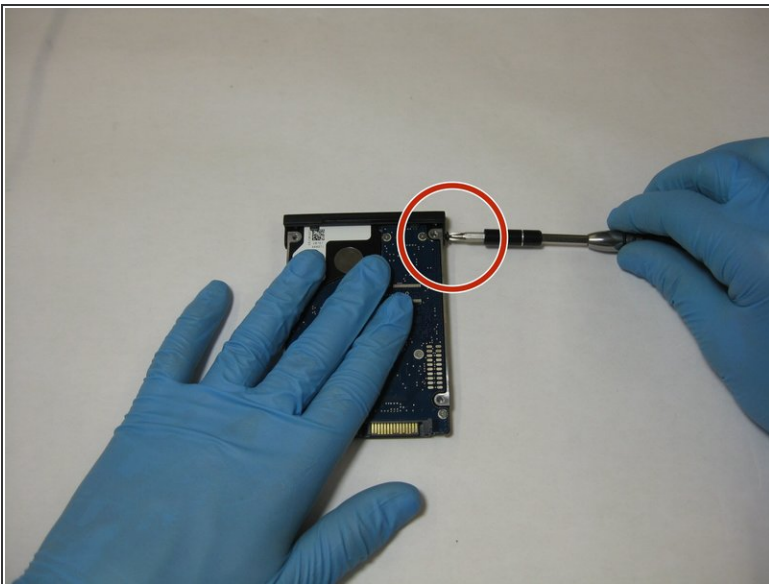


### Step 3



- Slide the hard drive out.

### Step 4



- Locate and remove the screw that secures the hard drive to hard drive caddy.
- Remove hard drive caddy.

To reassemble your device, follow these instructions in reverse order. Make sure to reinsert the hard drive with the hard drive caddy angle such that it will be flush with the device when completely inserted