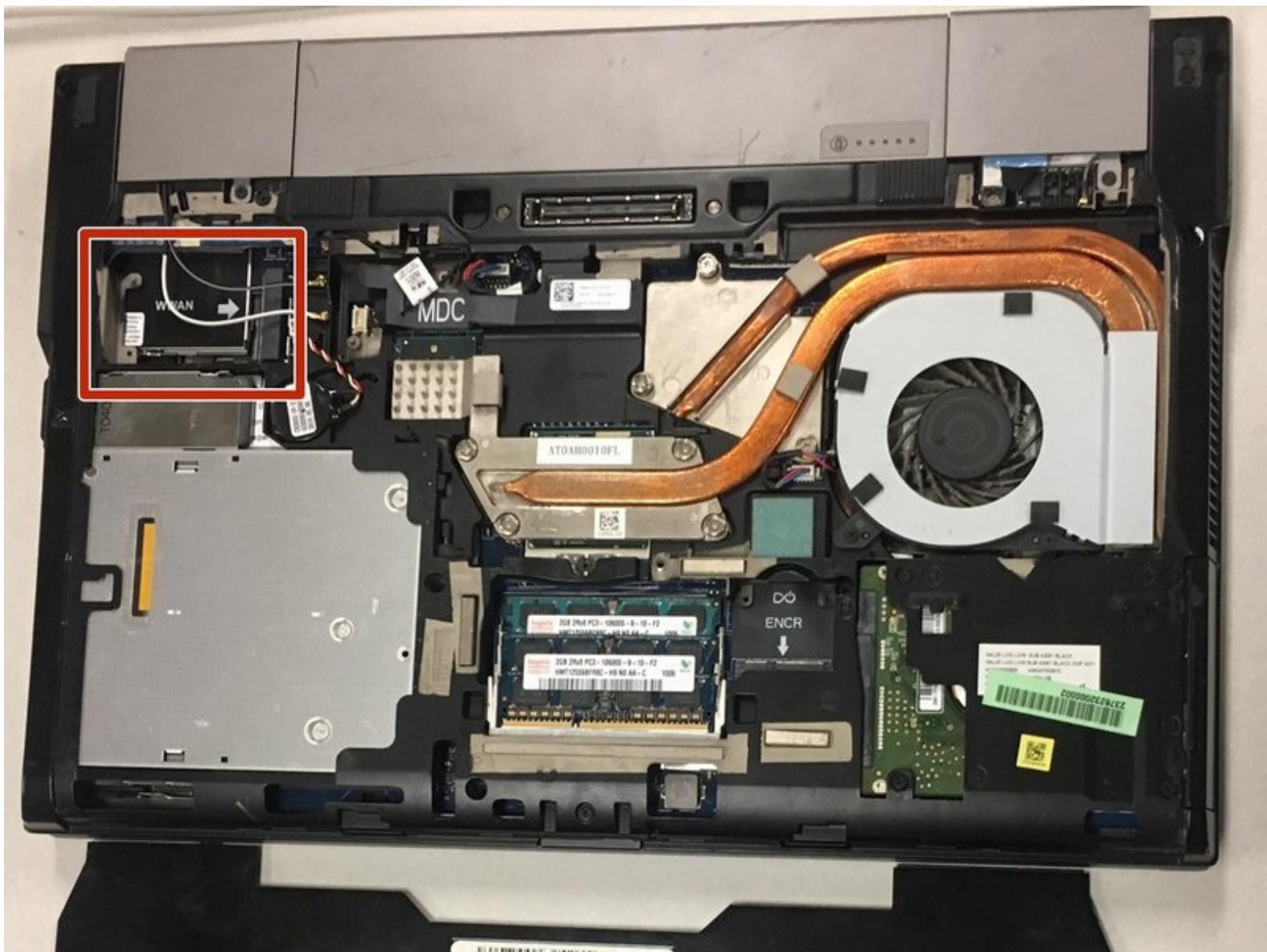




Dell Latitude E6510 WiFi Card Replacement

If your laptop cannot connect to the Wi-Fi it may be due to the WWAN card. Follow this guide to help properly replace the WLAN card.

Written By: Kolin Doyle



INTRODUCTION

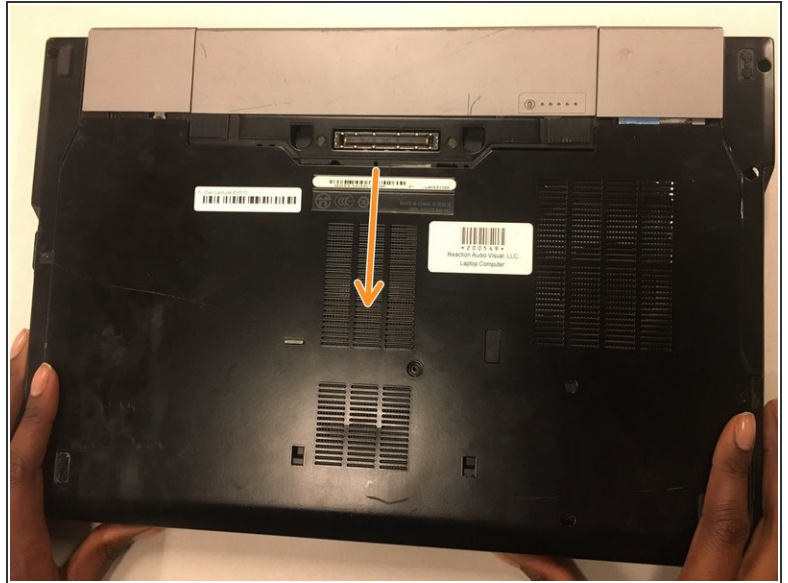
If your laptop cannot connect to the Wi-Fi it may be due to the WWAN card. Follow this guide to help properly replace the WLAN card.



TOOLS:

- [Spudger](#) (1)
 - [JIS #1](#) (1)
-

Step 1 — WiFi Card



- Remove the 8mm screw in the middle from the laptop with the J1 screwdriver.
- Then slide the back plate off.

Step 2



- Remove the antenna wires from the WiFi card using a plastic opening tool.
- Use the same Phillips screwdriver to remove the screw holding the WiFi card in place.
- ⓘ The WiFi card is missing in this model.

To reassemble your device, follow these instructions in reverse order.