



Dell Latitude E6520 Keyboard Replacement

How to replace a Dell Latitude E6520 keyboard.

Written By: Alec Weiss



INTRODUCTION

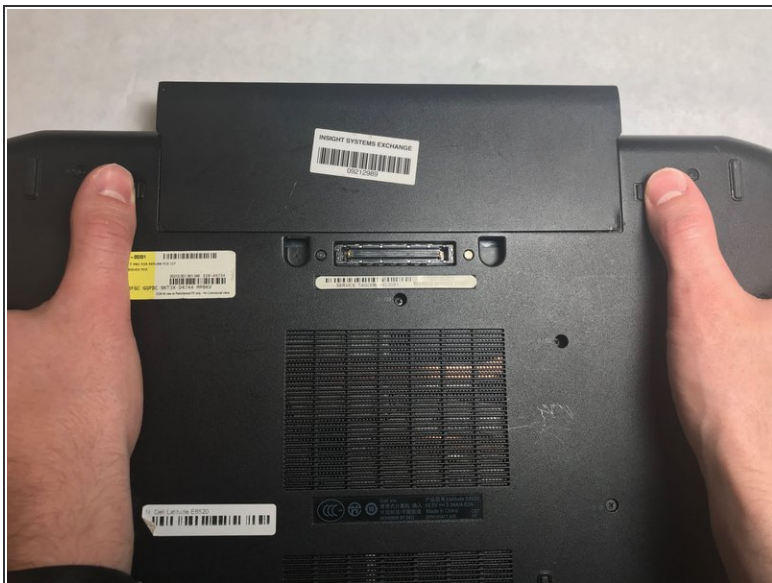
The steps in this guide will require a JIS #0 screw driver to remove 6 screws with a head size of approximately 4.36mm and length of 3.63mm.



TOOLS:

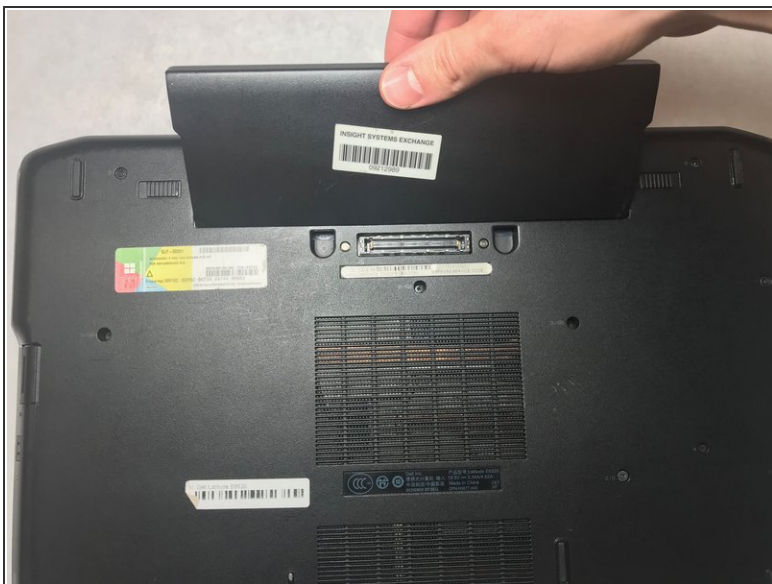
- [JIS #0 Screwdriver](#) (1)
-

Step 1 — Battery



- With the laptop closed and the bottom side facing up, slide the two battery latches towards the sides of the laptop.
- ⓘ When the latches are unlocked, a small logo resembling an open padlock will become visible.

Step 2



- Grasp the battery from the top and pull upward.

Step 3 — Bottom Cover



- Remove the ten 8.6 mm JIS #0 screws.

Step 4



- Place fingers underneath cover and pull off the cover.

Step 5 — Keyboard



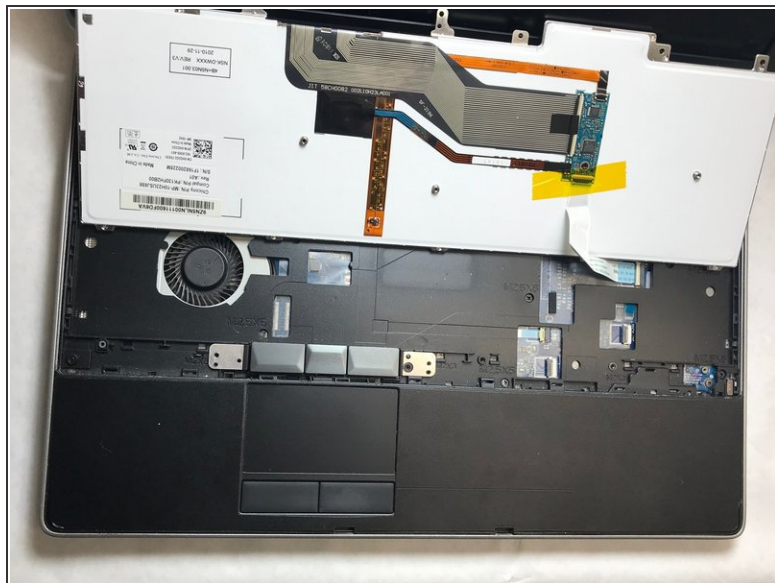
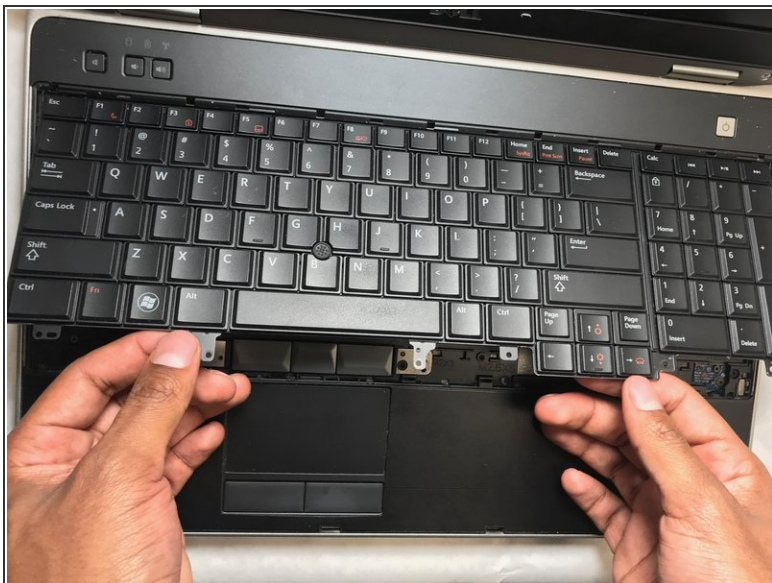
- Pry off the plastic keyboard trim. It is easiest to start at the bottom of the keyboard.

Step 6



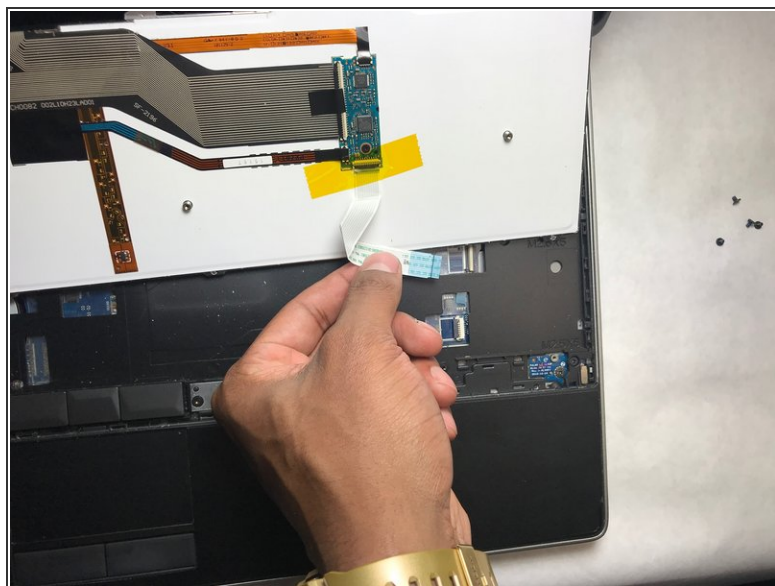
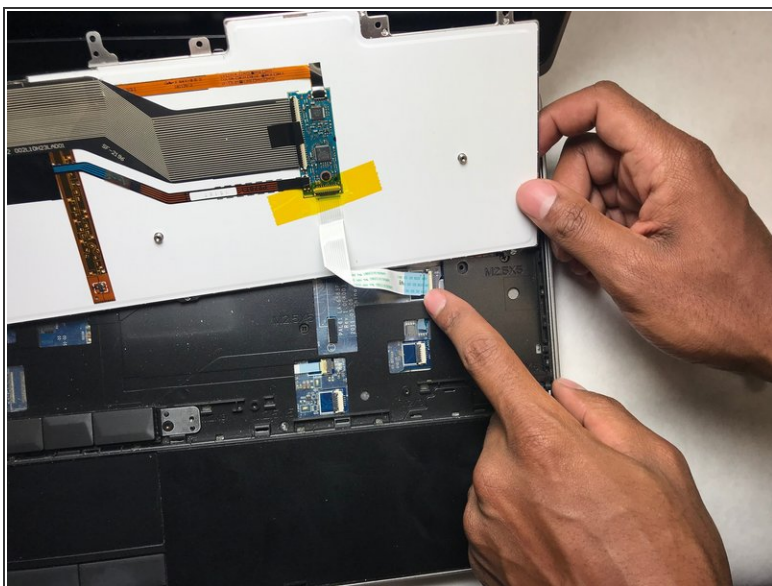
- Remove the six 3.63 mm JIS #0 screws holding the keyboard in place.

Step 7



- Lift the keypad up from the bottom.
- Rest the keypad on the LCD screen for easy access during the next step.

Step 8



- Peel back the tape holding the ribbon connector.
- Disconnect the ribbon and the keyboard will be free from the laptop.

To reassemble your device, follow these instructions in reverse order.