



Dell Latitude E6540 Hard Drive Replacement

Is the hard drive in your Dell Latitude E6540 bad? This guide will show you how to replace it.

Written By: Nick



INTRODUCTION

If you wish to replace a failed hard drive or upgrade it to a larger drive or SSD, this guide will show you how to change the drive on the system.

Guide notes

- This guide does not cover OS installation or backups. This is something you will need to figure out how to do.
- If your system has a HDP on it, it may carry to your new hard drive. I recommend testing it with a junk drive first (if available), just to be sure.
- You will need to figure out how to get install media for your particular system. If you wish to reinstall Windows, you can use the black Dell DVD or your custom media, if you made this when you purchased the system. If you have neither available, Dell will send you one set of media for your system, if it has not been previously requested. If this is the case, you can find these DVD's online very easily.
- If you break the hard drive cover, the part required has the following DP/N: TYR75



TOOLS:

- [64 Bit Driver Kit](#) (1)

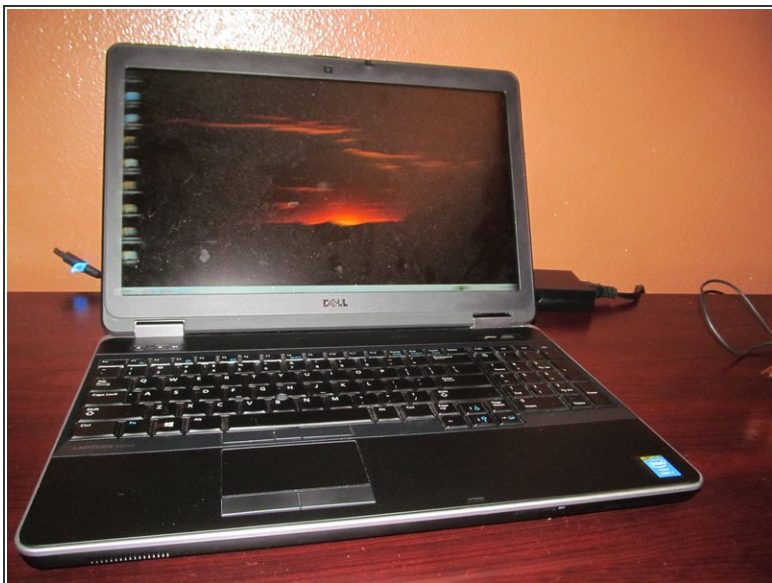


PARTS:

- [2.5" hard drive \(7mm\)](#) (1)
- [7mm hard drive bumpers](#) (1)

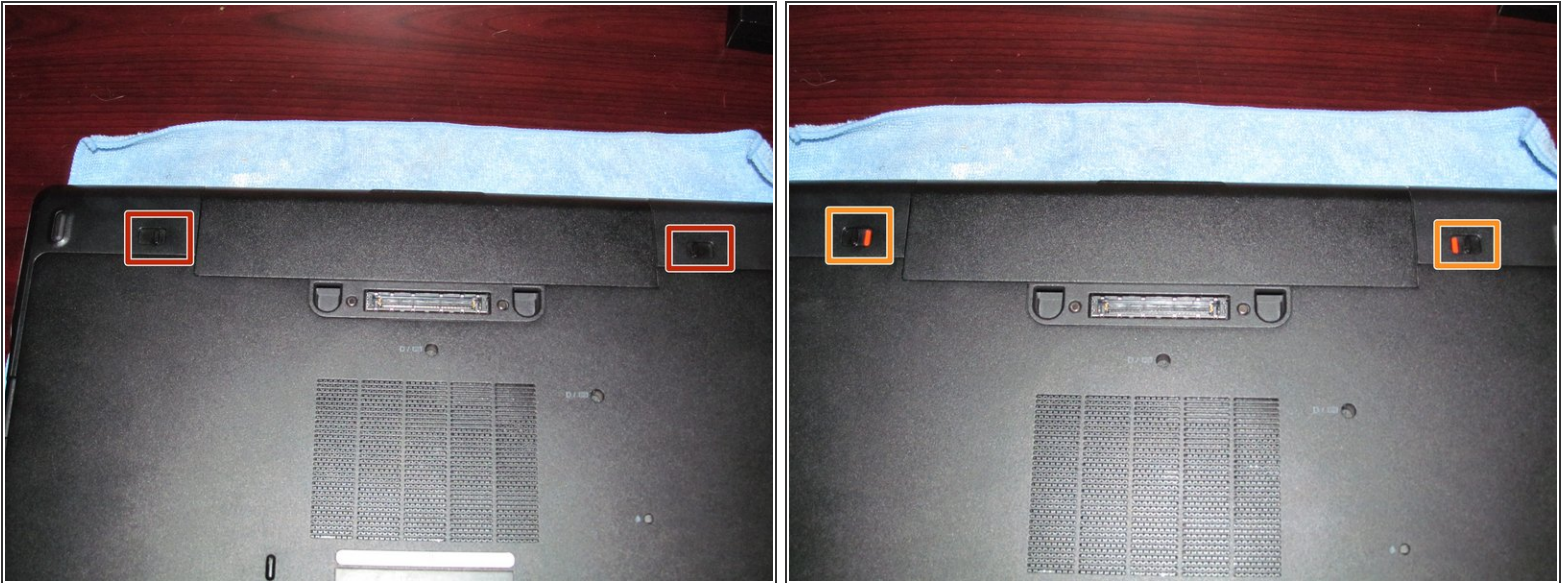
DP/N: TYR75

Step 1 — Put the laptop to sleep



- **If you hibernate your system:** Start the hibernation process and let your system do what it needs to. It will shut off once finished.
- **Sleep mode:** Select **Sleep** and the computer will be done relatively quickly. However, the power adapter will need to be plugged in.

Step 2 — Unlock the battery



- Flip the laptop over, and flip the 2 battery tabs open. The tabs will remain like this until the battery is re-installed.

Step 3 — Remove the old battery




- ⓘ Windows 7 systems have a COA under the battery. Windows 8.x systems have a tamper evident label on the service panel with the product key in the BIOS.
- ⓘ Extended runtime batteries are about 1/3 larger than standard batteries. These will stick out of the system.
- Remove the battery from the computer. Pull the battery up from the back of the battery, and set the battery aside.

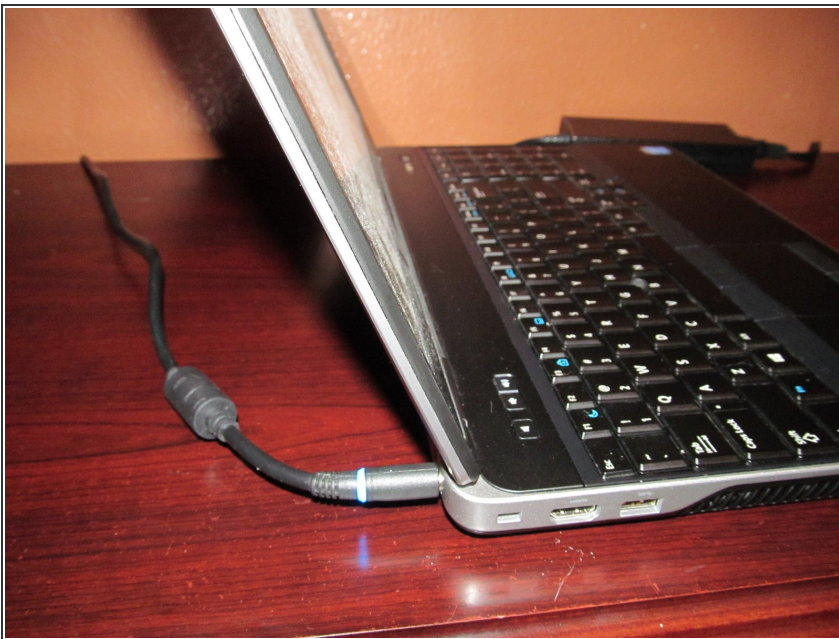
Step 4 — Install your new battery



 **This step does not apply if used as a prerequisite.**

-  Your battery options are: [65Whr 6 cell](#), [9 cell 97Whr](#), or a [87Whr 9 cell Extended Life](#) battery. The extended runtime batteries are recommended for replacement.
- Align the battery with the tabs on the back of the laptop. Once done, drop the battery in place and it should lock in. If needed, put light pressure on the battery.

Step 5 — Plug your laptop in



 **This step does not apply if used as a prerequisite.**

- Turn the computer on and plug the charger in.

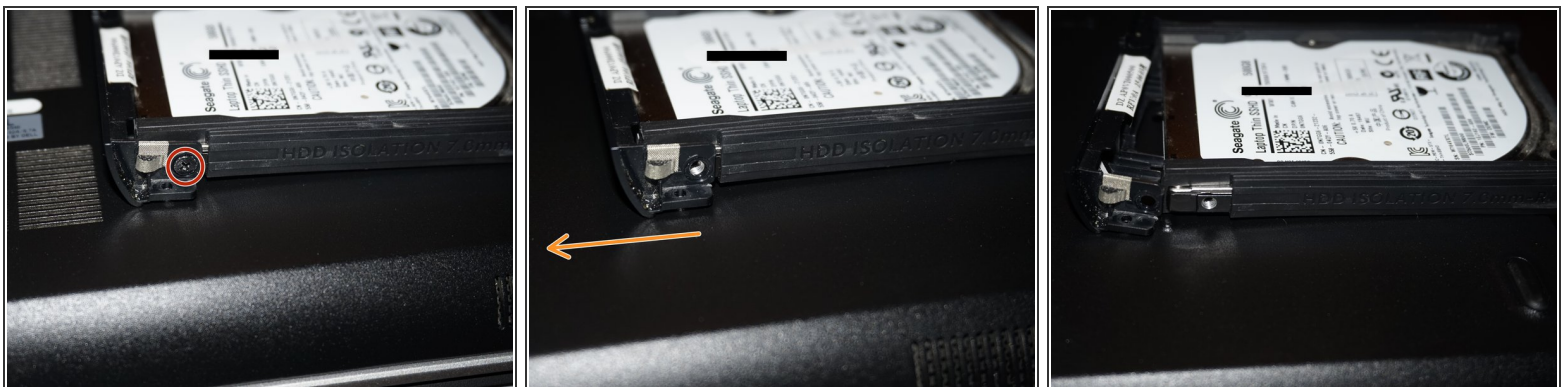
Step 6 — Remove the chassis screws



- To remove the hard drive from the computer, remove the two screws holding it in. Use the **Phillips #1** bit to do this.

⚠ The screw marked in orange is directly screwed into the chassis. **If this screw is overtightened, the hard drive clip will need to be replaced.**

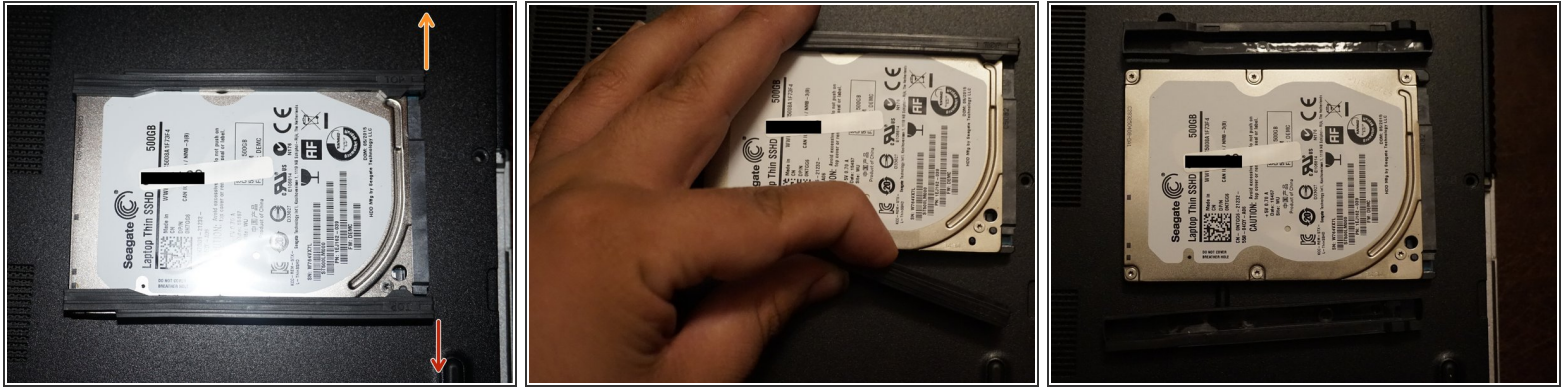
Step 7 — Remove the drive clip



i This step is not required if you are moving the drive to a Dell computer with the same mounting bracket or for Depot service and want to retain the hard drive.

- To remove the drive clip, remove the **Phillips #0** screw holding the hard drive to the clip.
- Once the screw is removed, remove the drive starting from the side with the screw.
- Remove the drive from the right side by removing the drive from the alignment pin.

Step 8 — Remove the rubber bumpers



- ☑ These bumpers are held in with double sided tape. The tape will likely lose it's stickiness after one use, but it is not required to secure the drive bumpers.
- Once the drive is removed from the clip, remove the rubber bumpers. To do this, pull them off of the drive as shown in the guide pictures. Transfer these bumpers to your replacement drive.

To reassemble your device, follow these instructions in reverse order.