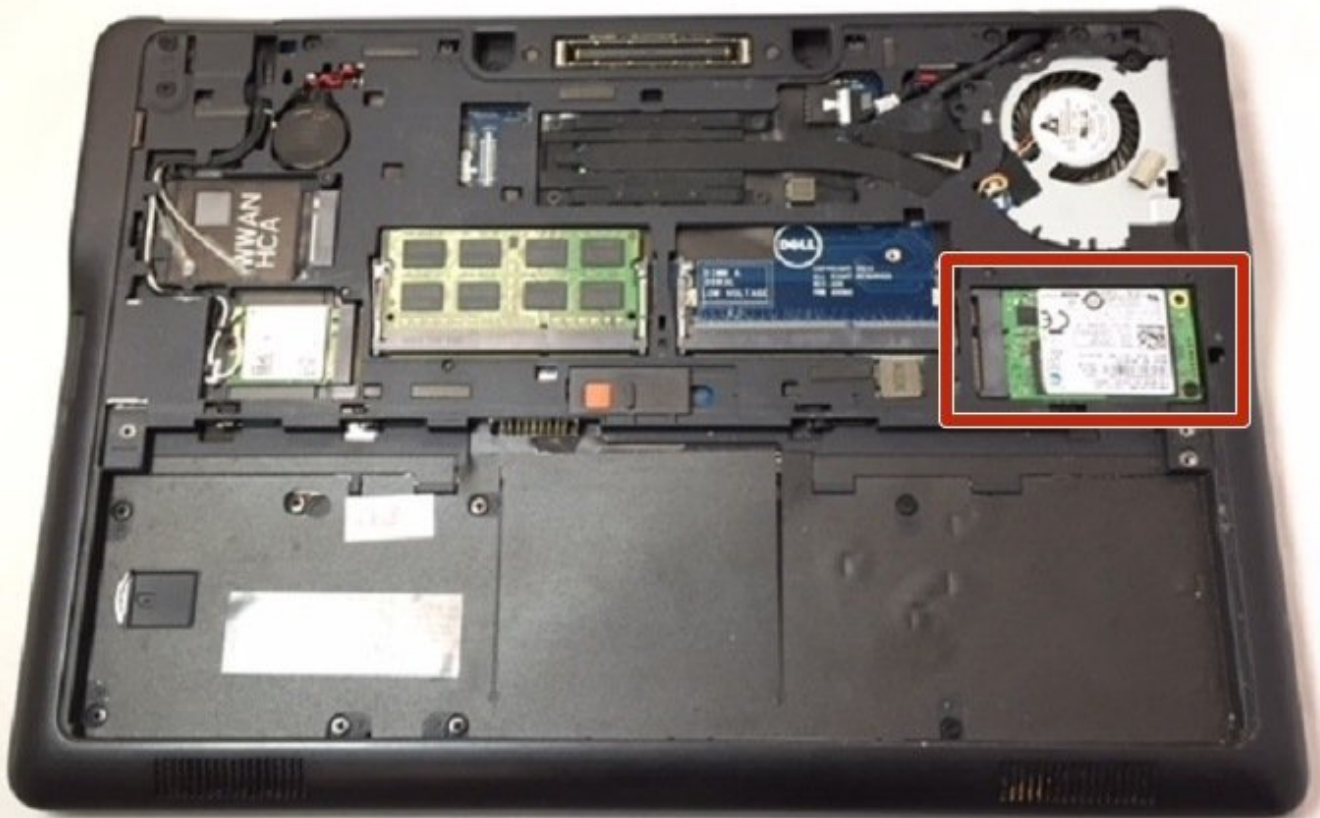




# Dell Latitude E7250 SSD Replacement

Replacing the SSD will fix issues with being unable to access files.

Written By: Robert Townsend

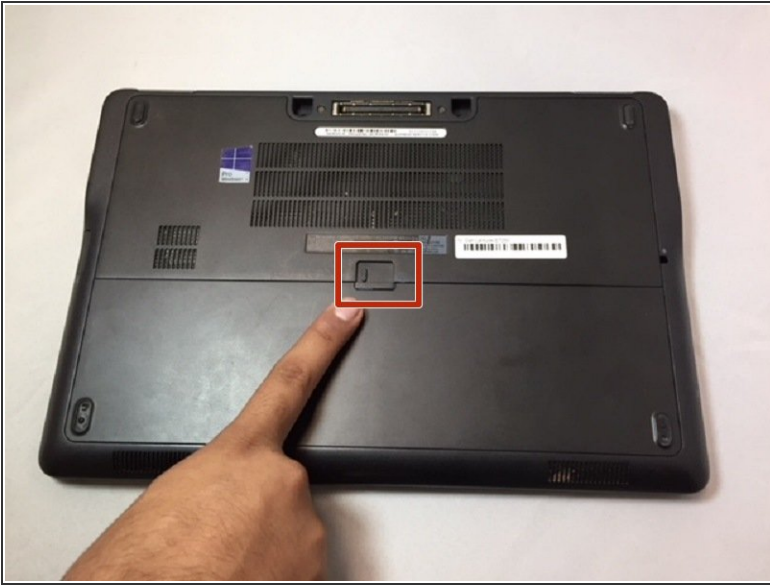




## TOOLS:

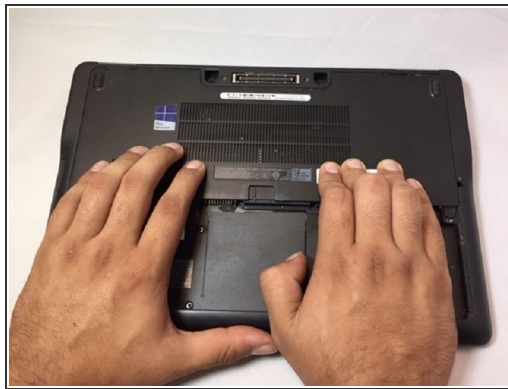
- [Phillips #0 Screwdriver](#) (1)
-

## Step 1 — Battery



- Slide the battery release all the way to the right.
- Once the battery release is pulled all the way, the battery will lift itself slightly from the casing.
- Remove the battery.

## Step 2 — SSD



- With the battery removed two screws will be visible. These will need to be removed.
- Placing your hands on either side of the panel, push down and pull back to slide the plate back and off.

## Step 3



- Locate your SSD, it is on the right side and held in with a small screw.
- Unscrew the SSD carefully. Once done, the SSD will "pop" upwards at an angle making removal easy.
- Gently grasp the SSD on either side with your thumb and forefinger and pull away from the computer.

To reassemble your device, follow these instructions in reverse order.