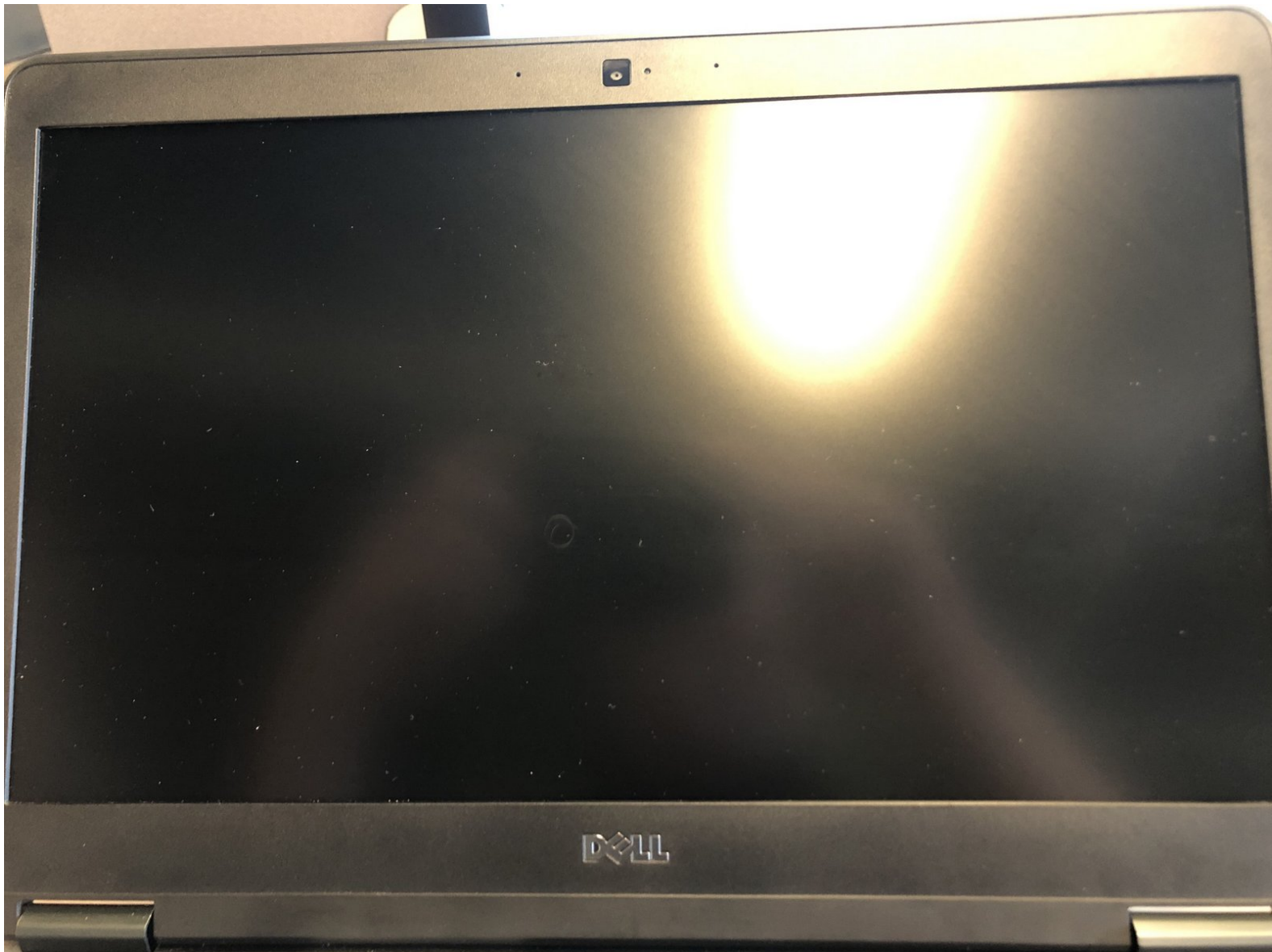




Dell Latitude E7440 Screen Replacement

Screen Replacement for the Dell Latitude E7440

Written By: koppie007



INTRODUCTION

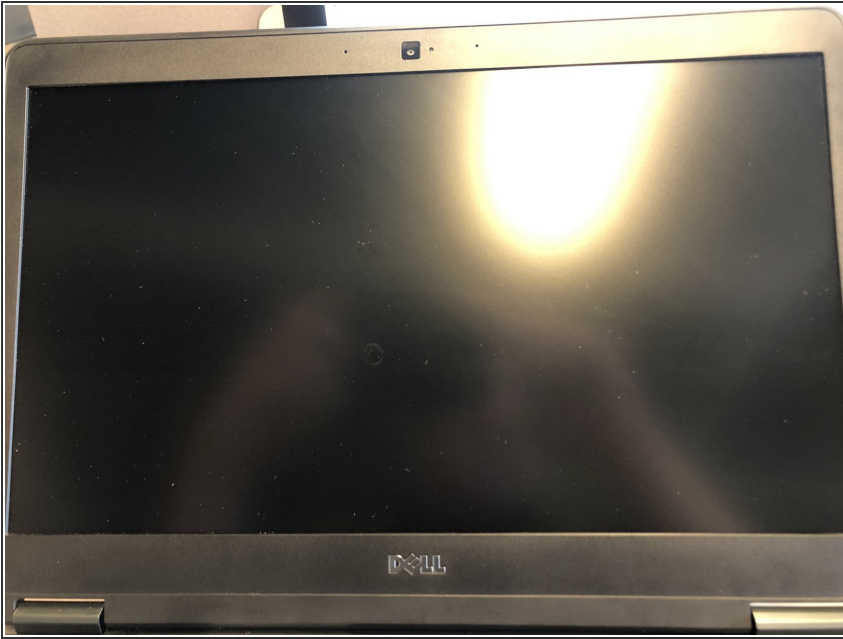
Use this manual to replace the screen of your Latitude E7440.



TOOLS:

- [iFixit Opening Tools](#) (1)
-

Step 1 — Get the laptop ready




- Take the laptop right in front of you and open it.

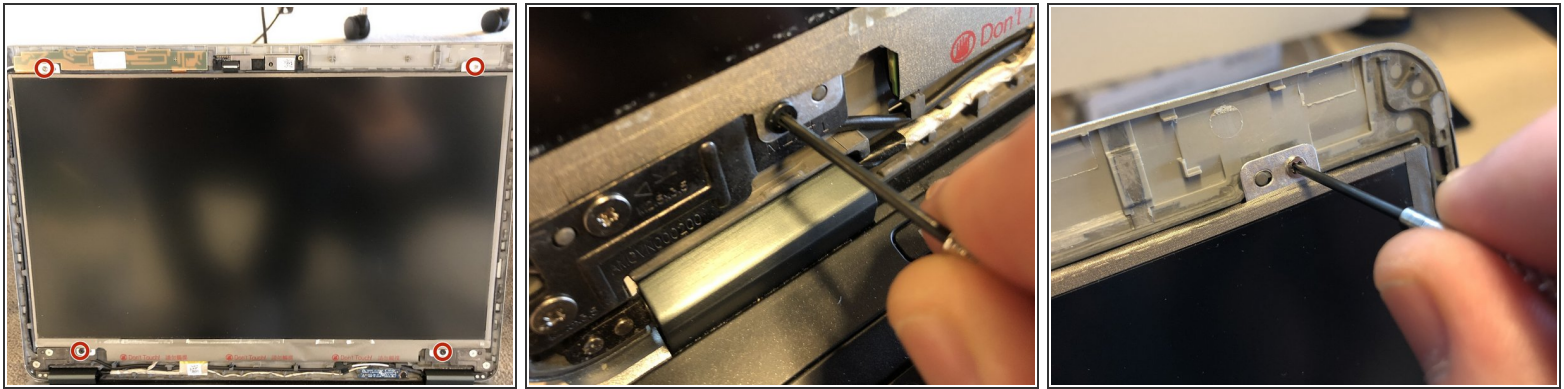
Step 2 — Remove the screen bezel



- Take a plastic opener and carefully slide it between the screen bezel and the back cover. I started on the left upper corner.

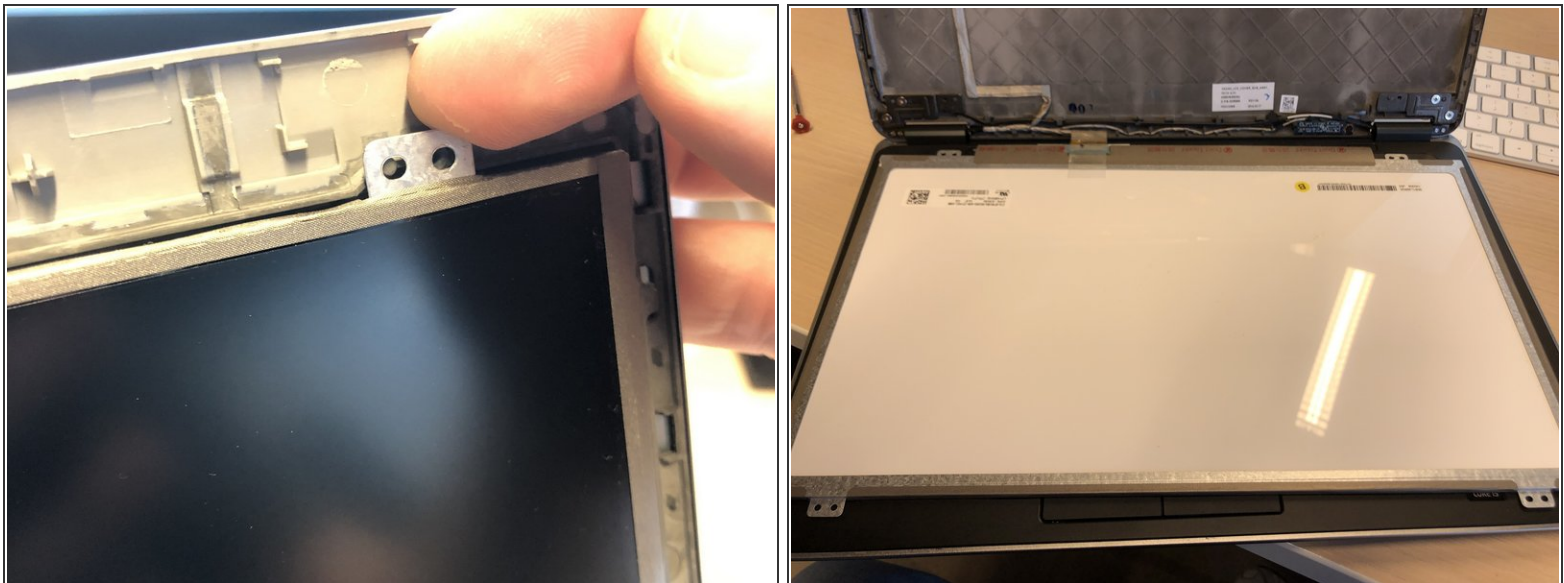
 Now go on to the other sides and loose the clips. **Be carefull, because the clips can break easily!**

Step 3 — Remove the screws



- Remove the 4 screws in the corners.
- Please note that the 2 upper screws are different from the other 2 screws down. The silver (shorter) screws belongs in the top and the black (longer) screws belong down.

Step 4 — Take out the screen

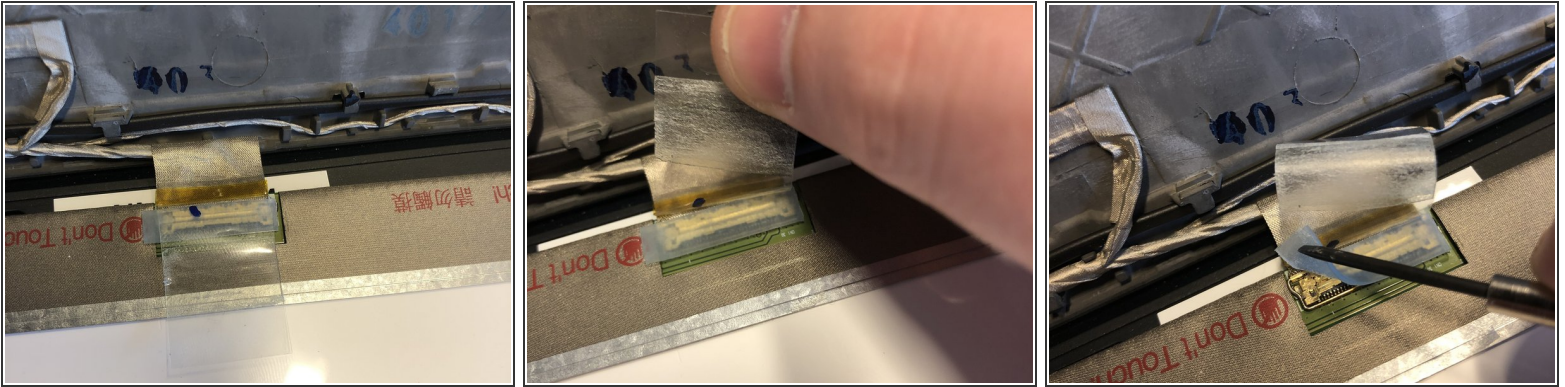


- Lift the screen out (**do not remove the screen!**) with your fingers, it should come off easily.
- You are able to put the screen on the keyboard, there is enough space between the cable and the screen.



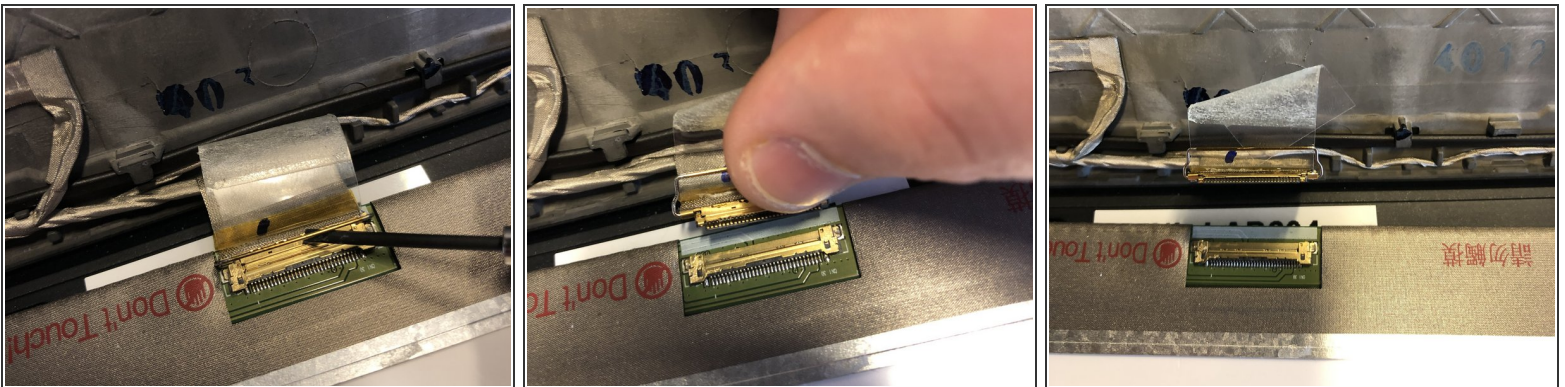
Do not attempt to remove the screen, it's still connected with the video cable, if you remove it, you could damage the cable and/or the connector!

Step 5 — Remove the plastic flap



- Remove the plastic flap which is securing the connector. Do not entirely remove the flap, but just create enough space to reach the connector.
- And there is another flap which is directly on the connector, remove it with your plastic opening tool. You can remove this one entirely from the connector. The connector should now be visible.

Step 6 — Disconnect the connector and remove the screen



- There is a metal clip securing the connector, just pull it upwards carefully with your opening tool.
- Hold on the metal clip and pull it out right of the socket (pull it towards the back cover). It should come out easily.
- That's it. You can now remove the screen. Please follow this guide in reverse to connect your new screen.

To reassemble your device, follow these instructions in reverse order.

This is my first guide, hopefully it will help you to take out the screen.