



# Dell Latitude E7440 WLAN Card Replacement

How to replace the WLAN card in a Dell Latitude E7440.

Written By: Akash Kedia



---

## INTRODUCTION

Before replacing your WLAN card, please refer to our [Troubleshooting Guide](#). If your laptop is still not receiving a WiFi connection, but your other devices are, you will need to replace your WLAN card. Dell has made this process simple.



### TOOLS:

- [Phillips #0 Screwdriver](#) (1)
  - [Spudger](#) (1)
-

## Step 1 — Battery



- Power off your laptop before starting.
- Flip the device over so that the vents on the bottom are facing away from you.

## Step 2



- Place your finger on the latch located in the center of the laptop.
  - Slide the latch to the right, applying enough force to reveal a red indicator.
- i** You will hear a soft click when the latch has been disengaged.

### Step 3



- Lift the battery by the top, away from the laptop body.

### Step 4 — WLAN Card



- Remove two M2 x 3mm Phillips #0 screws from the base cover.

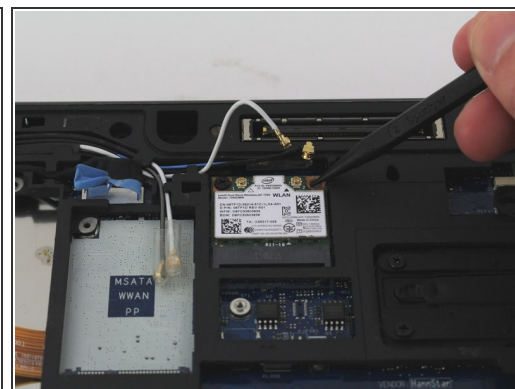


## Step 5



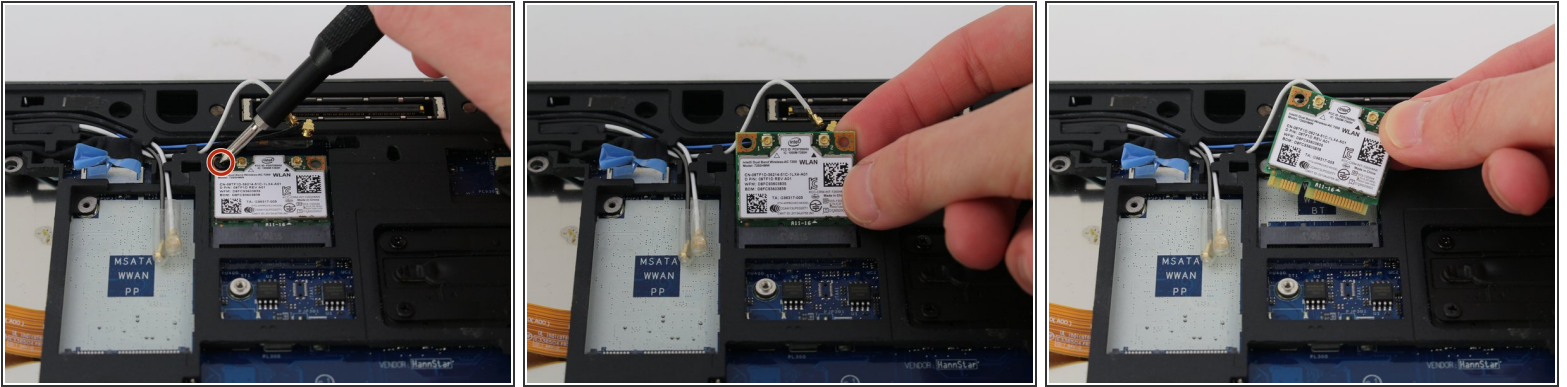
- Slide the base cover down slightly and remove it to find the WLAN card.

## Step 6



- Disconnect the white and black wires attached to the WLAN card by pulling them away from the card.
- ⓘ You can use the nylon spudger to disconnect a wire by placing it between the curved part of the wire and gently pulling.
- ⚡ When attaching the wires to the WLAN card, place the wire head directly above the connectors and apply pressure to the head to reconnect it.

## Step 7



- Remove a M2 x 3mm Phillips #0 screw from the WLAN card.
- Gently pull the WLAN card out of its socket.

To reassemble your device, follow these instructions in reverse order.