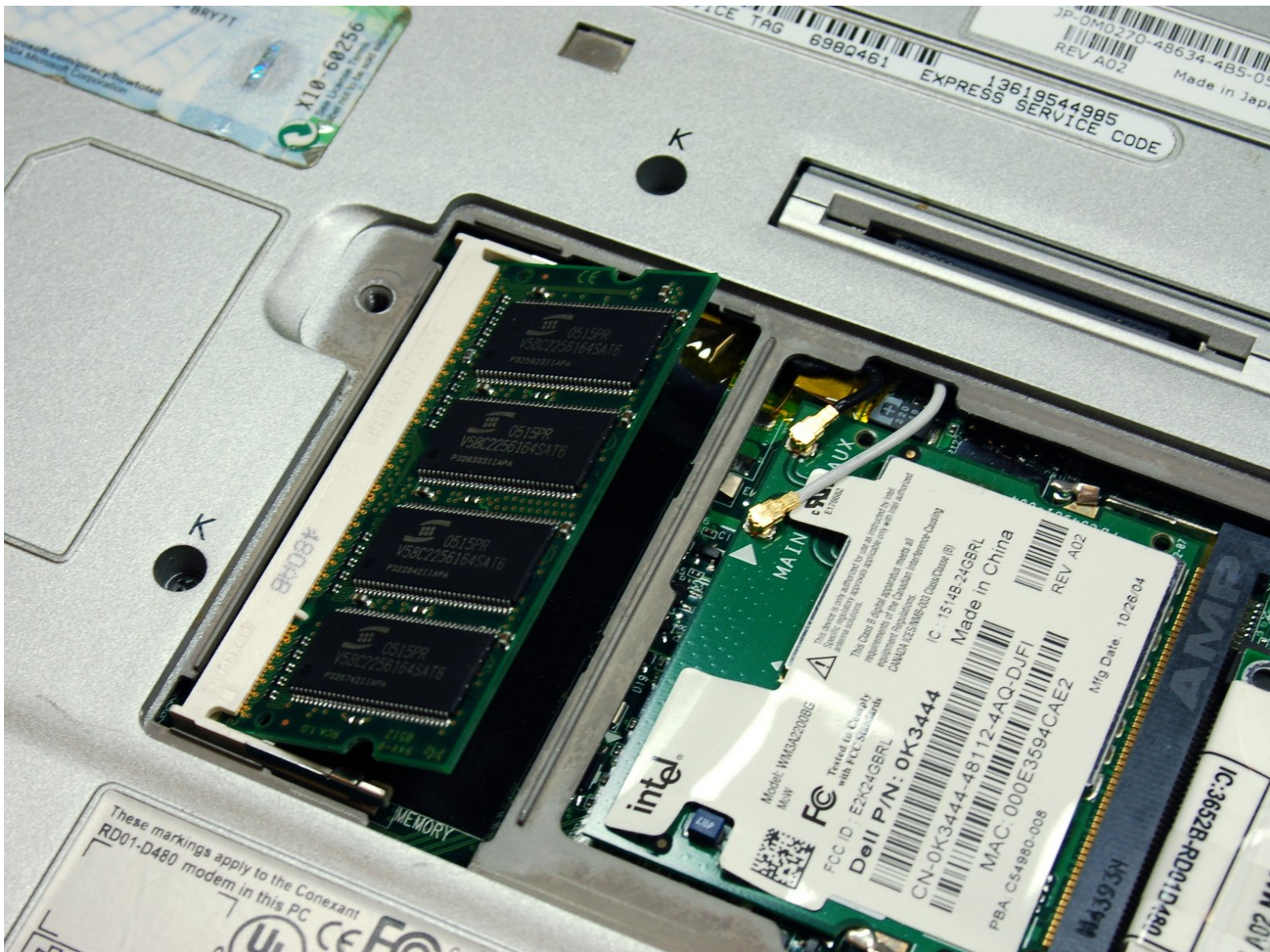




Dell Latitude X300 RAM Replacement

Install or upgrade new RAM

Written By: Thomas Wong



**TOOLS:**

- [Phillips #0 Screwdriver](#) (1)

**PARTS:**

- [PC2700 1 GB RAM Chip](#) (1)
- [PC2700 512 MB RAM Chip](#) (1)

Step 1 — RAM



- Turn the laptop over so that the bottom is facing up.
- Remove the two #0 3 mm screws holding the cover plate.

Step 2



- Push both metal retaining clips outward at the same time using your hands carefully.
- ⓘ If done correctly the memory should pop up at a 45 degree angle.

Step 3



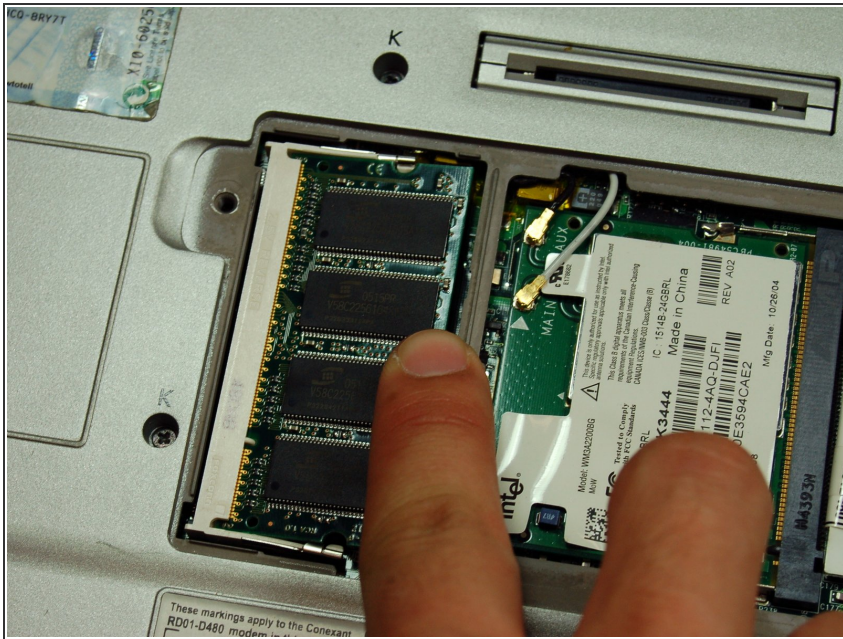
- Gently pull the memory out of the retainer at the same 45 degree angle.

Step 4



- Insert the new memory at 45 degree angle.

Step 5



- Ensure the memory is in all the way before pressing the memory downward until both metal retainer clips are snapped into place.

To reassemble your device, reinstall cover plate with two #0 screws.