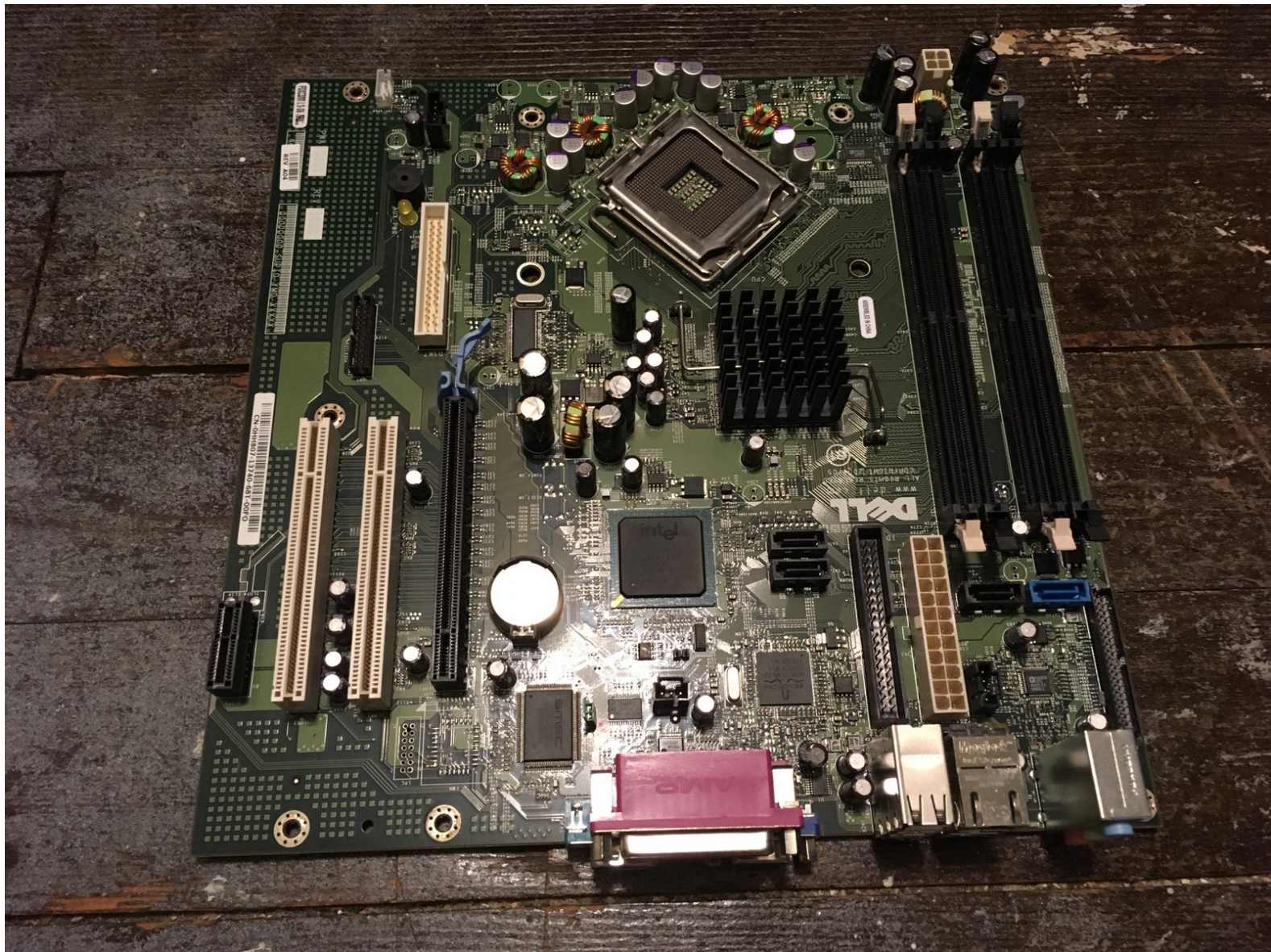




# Dell Optiplex GX620 Motherboard Replacement

This guide show you how to remove and replace the motherboard in a Dell Optiplex GX620.

Written By: Padraic Hoselton



## INTRODUCTION

This guide show you how to remove and replace the motherboard in a Dell Optiplex GX620.



### TOOLS:

- [Phillips #2 Screwdriver](#) (1)



### PARTS:

- [Thermal Paste](#) (1)



## Step 1 — How to unplug and discharge before repair



- Power down your PC and remove the power cord from the back.

## Step 2



- Press and hold the power button for about 10 seconds, then release.
  - ⓘ This helps drain any remaining power stored in the capacitors, so that you can safely work on the internal components.

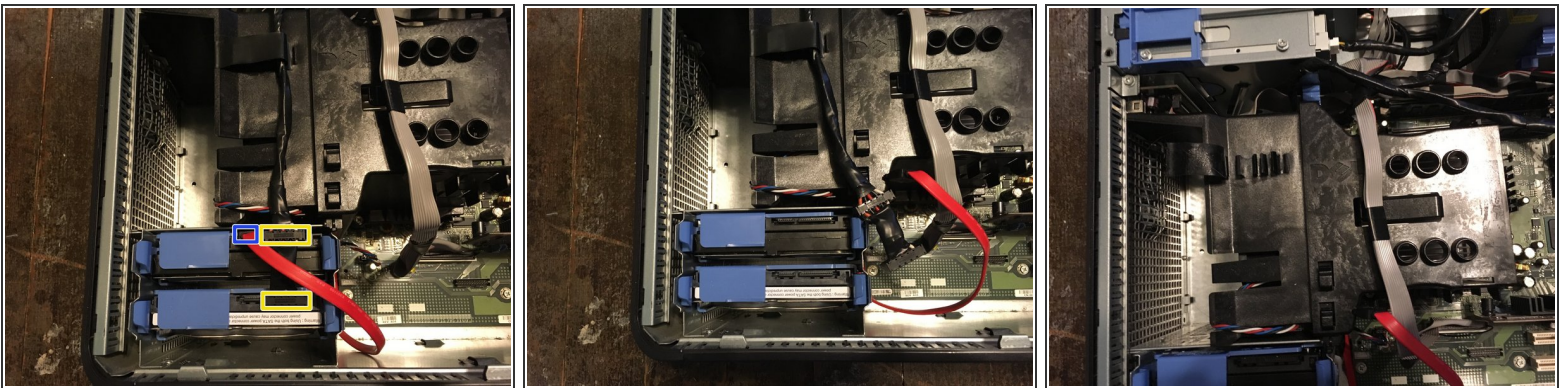


### Step 3 — Dell Optiplex GX620 Side Panel Disassembly



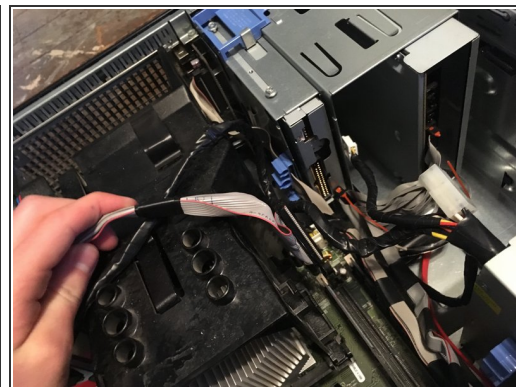
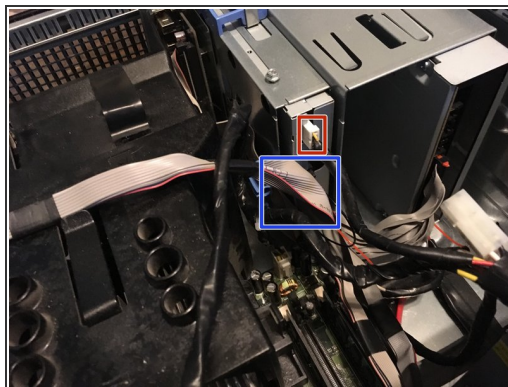
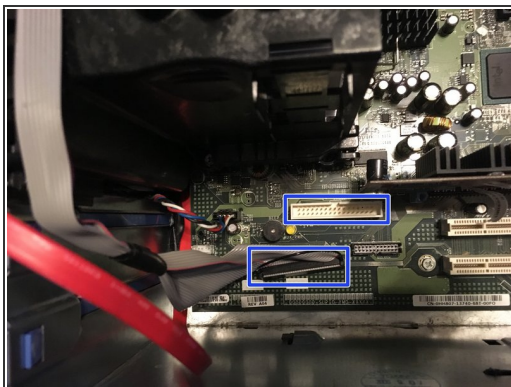
- With the computer standing upright, firmly pull on the tab at the back of the computer.
- When the side panel pops free, gently pull the panel away from the computer.
- ❗ If you have trouble freeing the side panel from the case, you may need to pull the tab a bit harder.

### Step 4 — Now unplug your hard drives power and data cables.



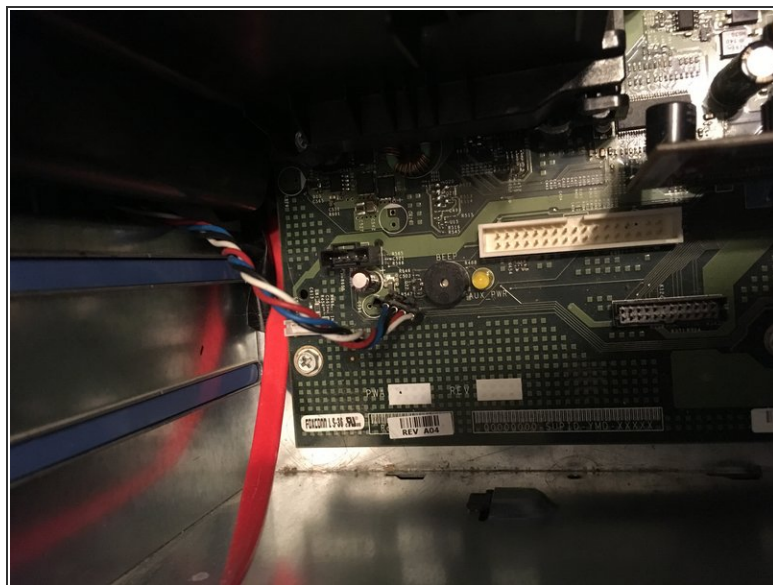
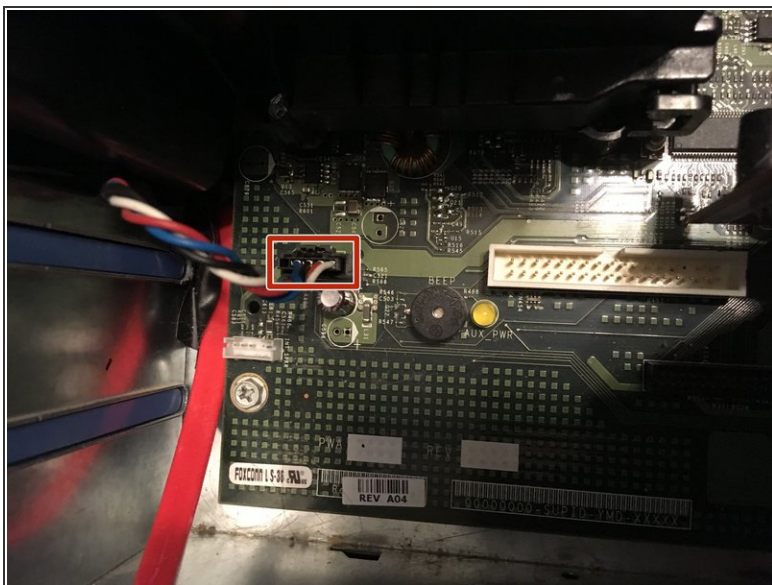
- Move the cables out of your way.
- SATA Power
- SATA Data

## Step 5 — Unplug your floppy drive on the motherboard and the drive.



- Unplug the power cable
- Unplug the data cable

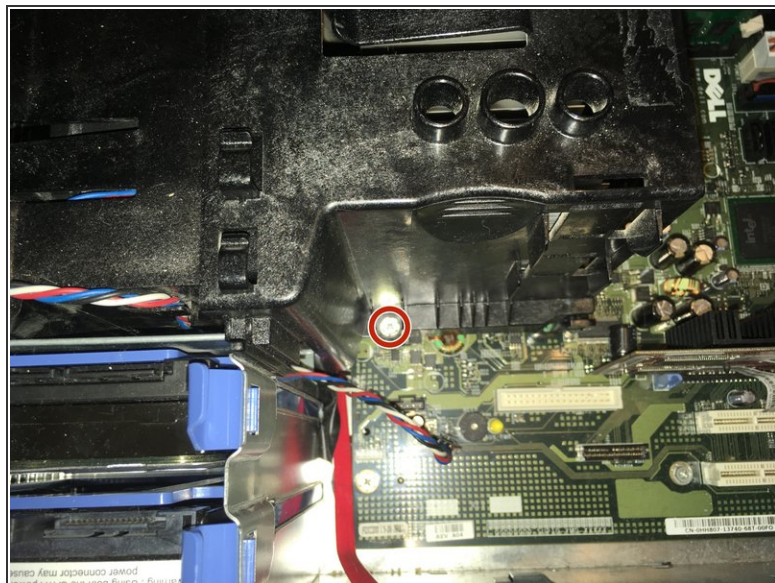
## Step 6 — Disconnect CPU fan.



- Unplug the fan that is on the motherboard.

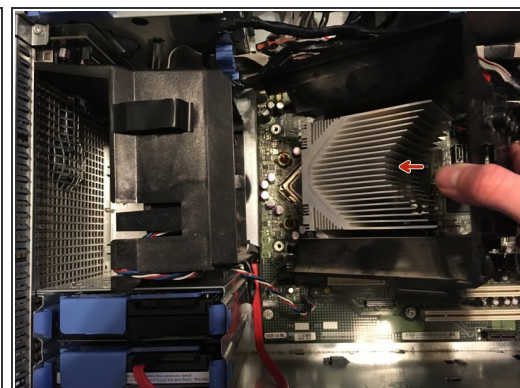
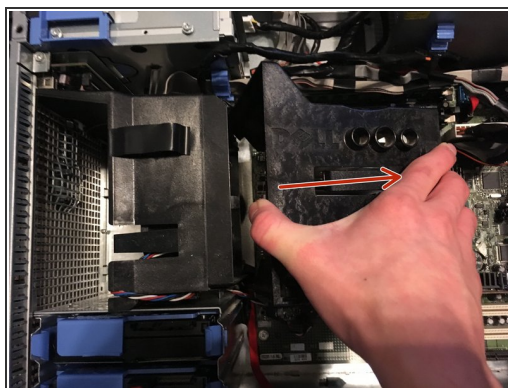


## Step 7



- There is two Phillips #2 screws that need to be removed.
- ⓘ The two screws have springs that keep them there.

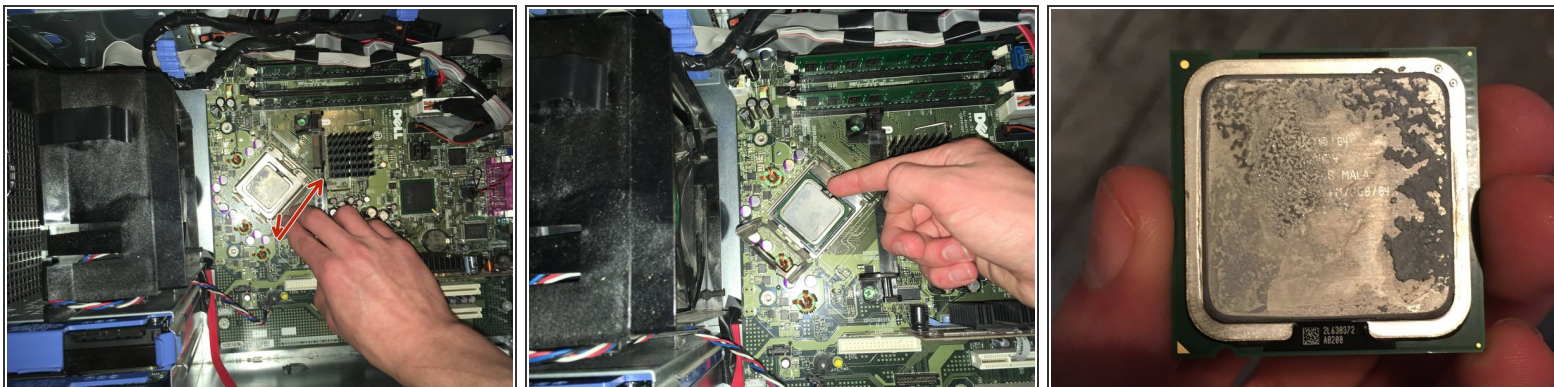
## Step 8 — Now it's time to remove the heat sink.



- Lift the heat sink.



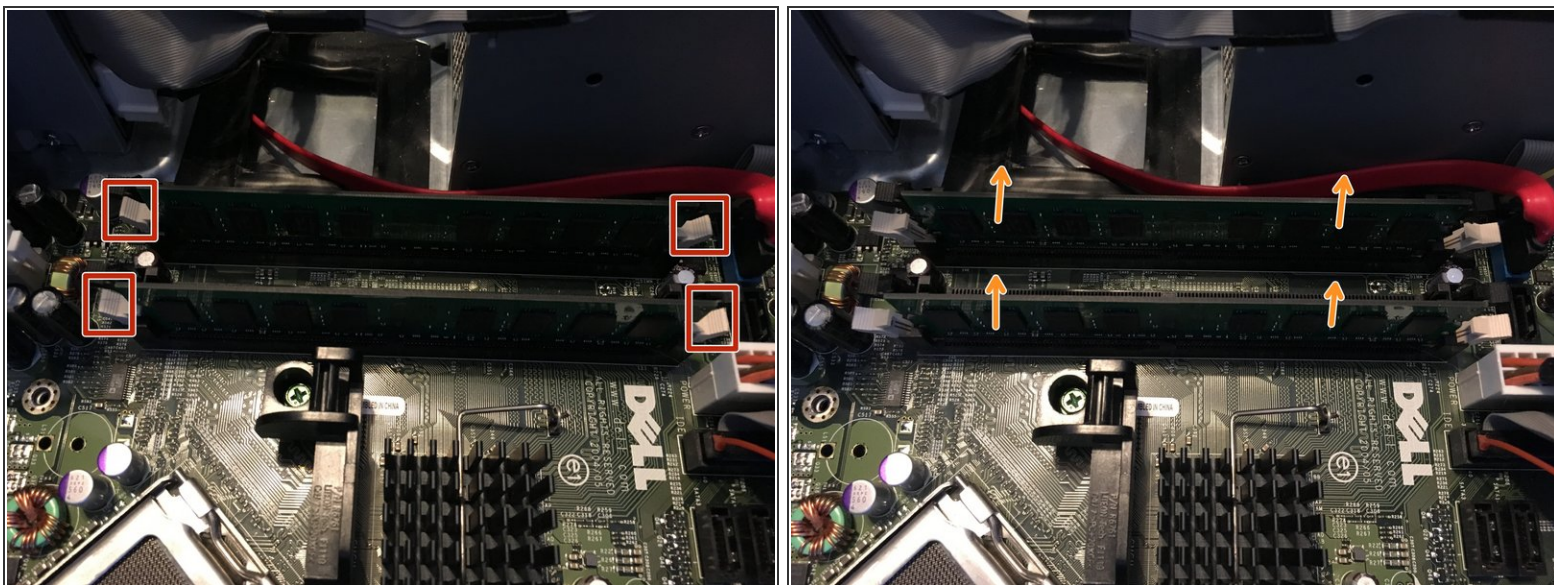
## Step 9 — CPU removal.



- Push and release tap on it. And then take the CPU out.

☑ Remember to put new thermal paste on the CPU.

## Step 10 — Remove the ram

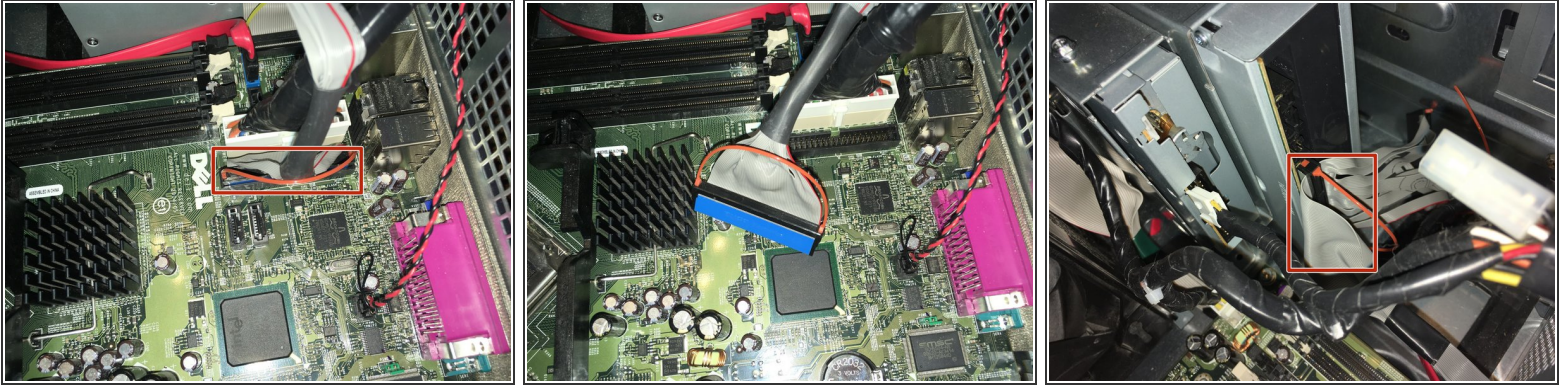


- Push the tabs down.

- Pull the cards out.

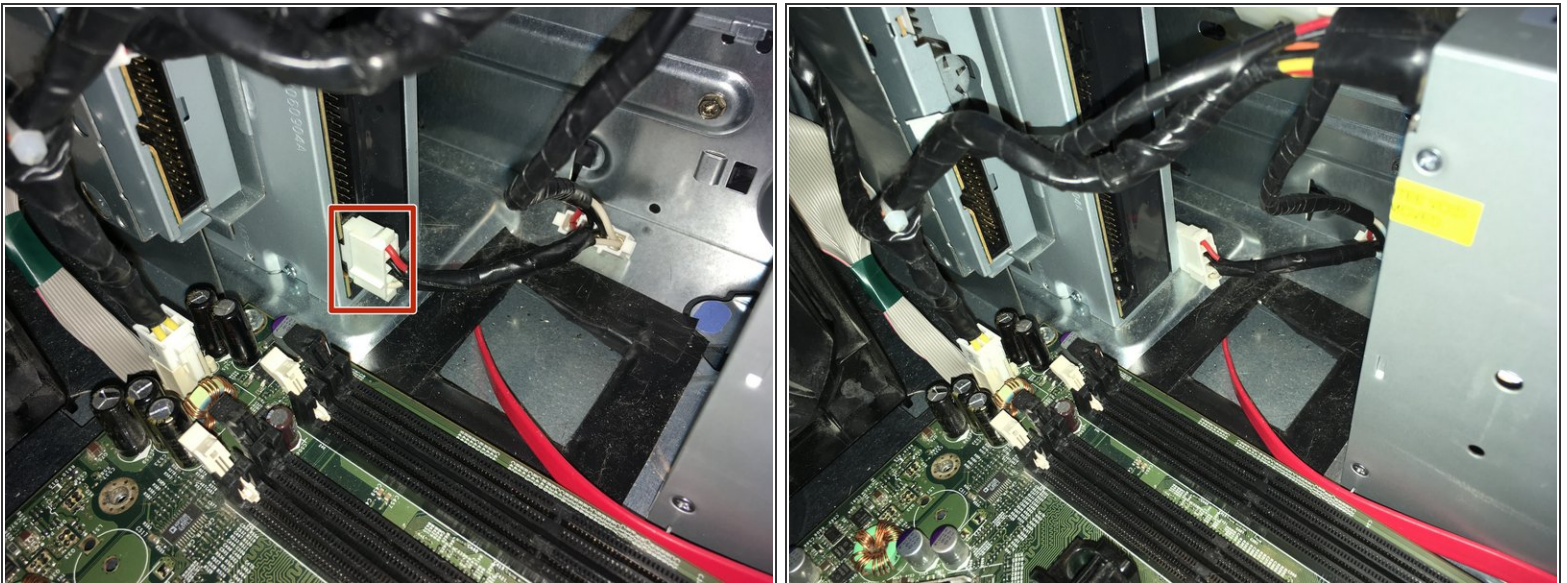


## Step 11 — Remove the DVD cable



- Pull the two cables from the DVD drive off.

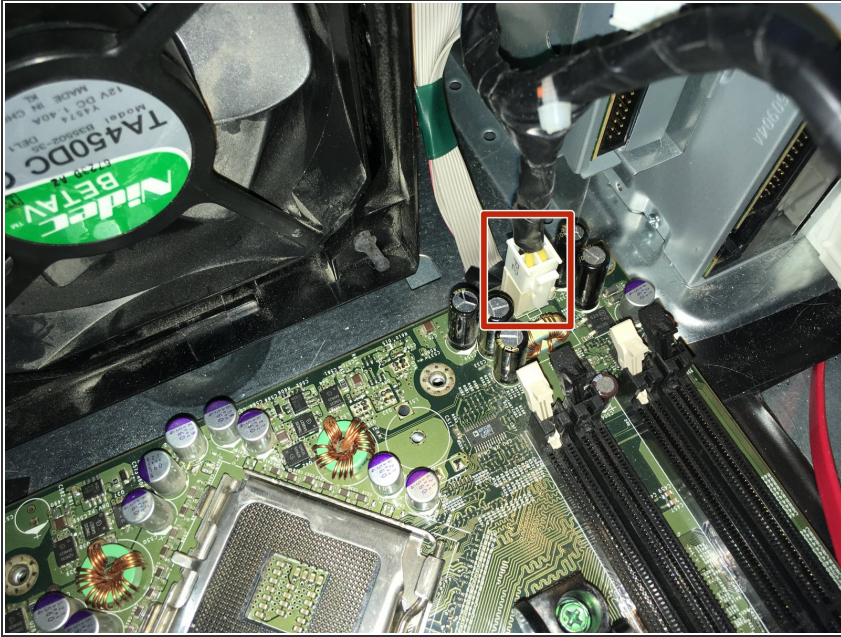
## Step 12



- Pull the power cable from the DVD drive off.

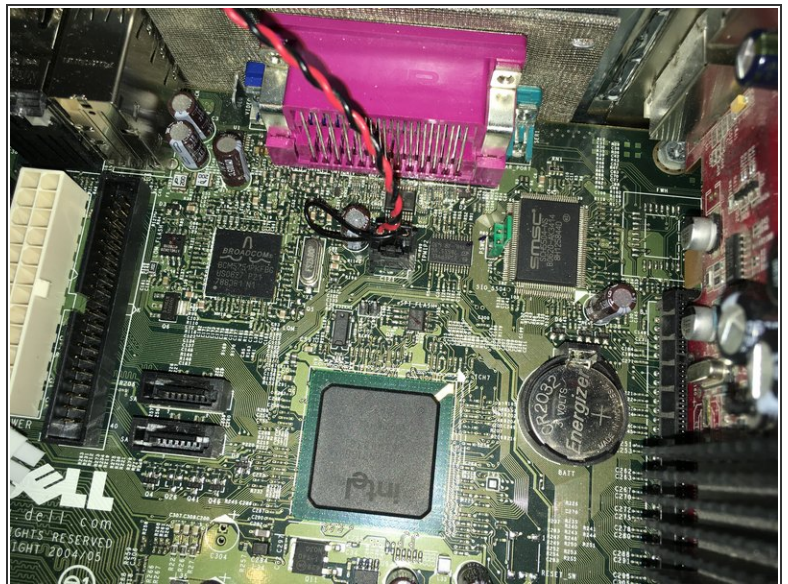
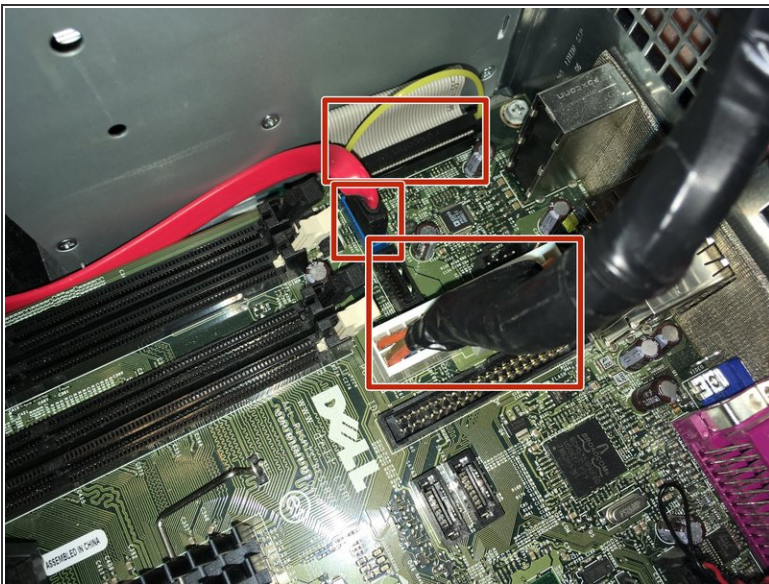


## Step 13 — Remove the CPU power



- Pull the CPU power cable off.

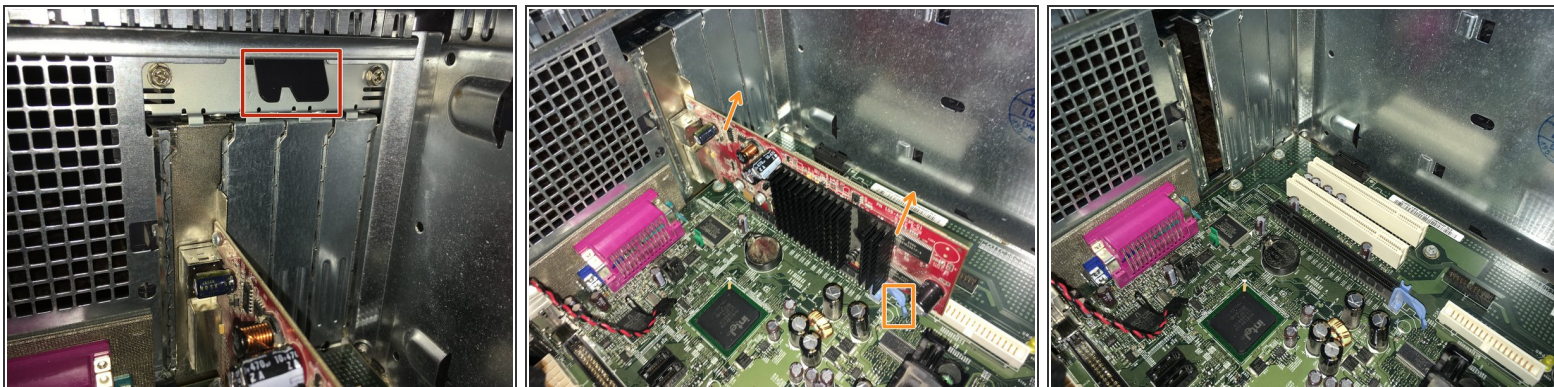
## Step 14 — Remove the three cables



- Pull the three cables off.

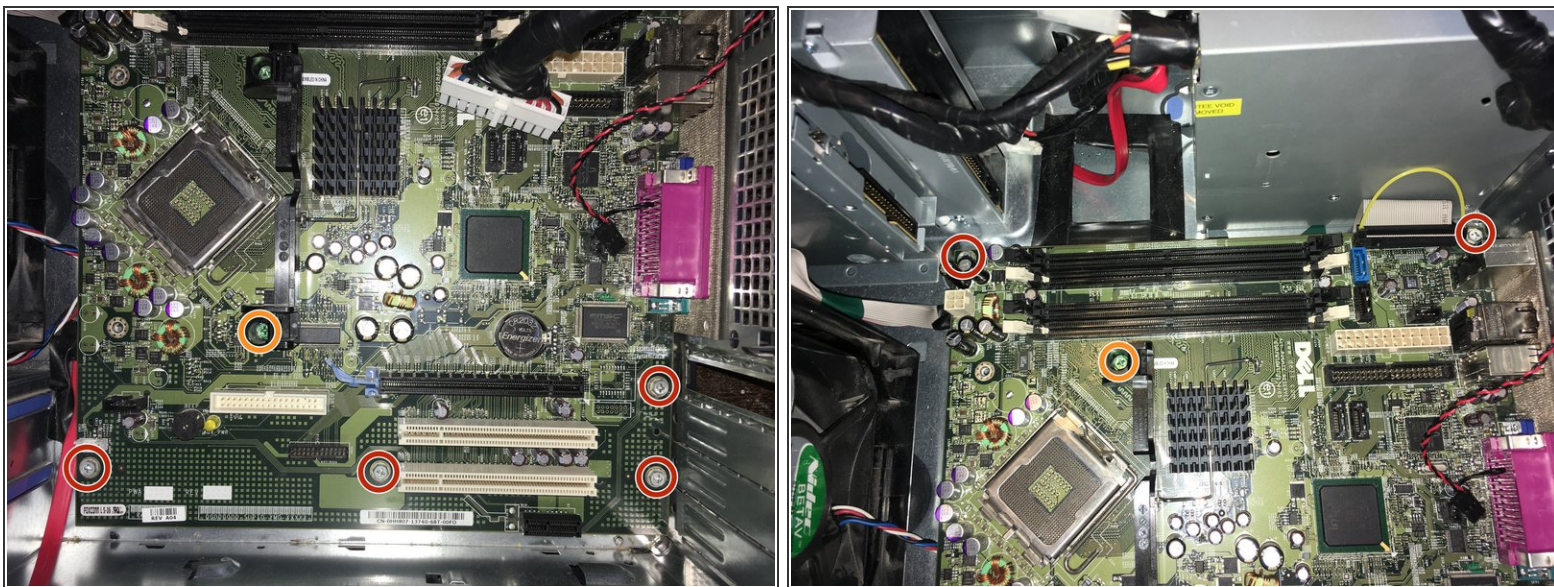


## Step 15 — Remove the graphics card



- Push the tab to releases the latch.
- Push the tab and pull the graphics card out.

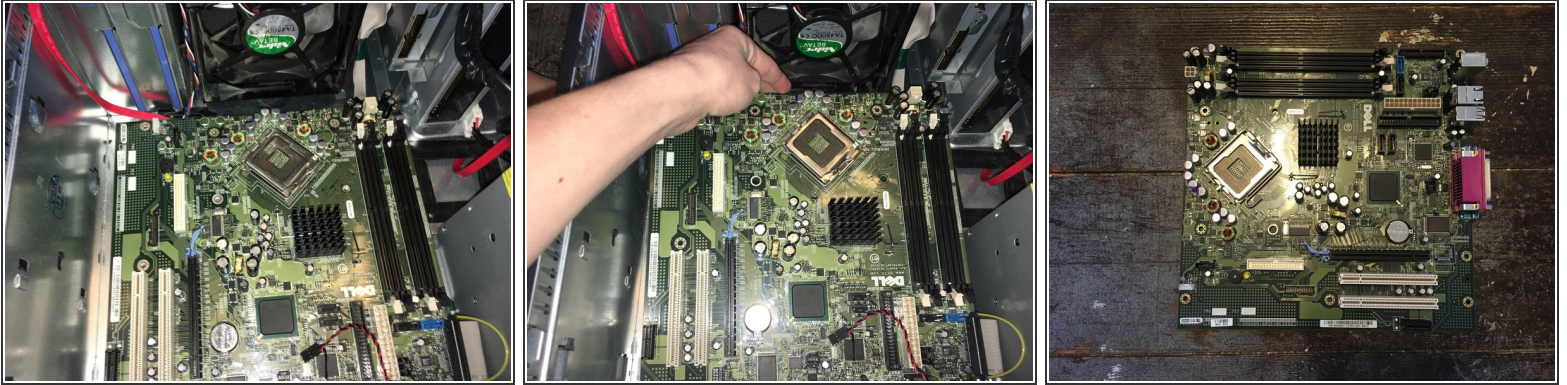
## Step 16 — Remove the motherboard screws



- Remove the six Philips #2 screws.
- Remove the two green Philips #2 screws.



## Step 17 — Remove the motherboard



- Gently pull the motherboard out.

To reassemble your device, follow these instructions in reverse order.