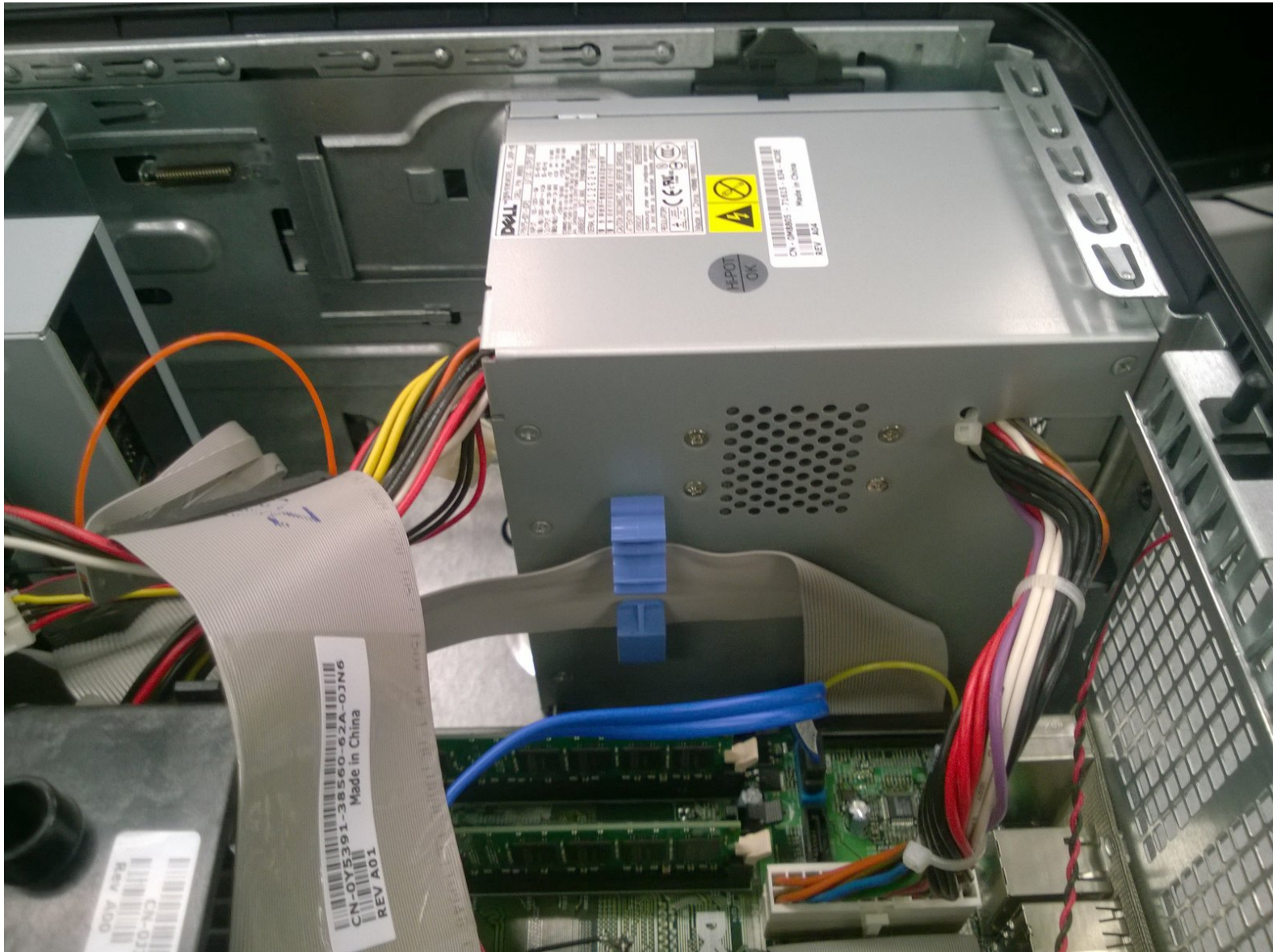




# Dell Optiplex GX620 Power Supply Replacement

This guide will teach you how to remove the power supply unit from a Dell Optiplex GX620.

Written By: Kristina



---

## INTRODUCTION

You should never try to repair a power supply unit. These are appropriately labeled, "Field Replaceable Units" for a reason. Disassembling a computer power supply unit can seriously harm and even kill you.



### TOOLS:

- [Phillips #1 Screwdriver](#) (1)
  - [Anti-Static Wrist Strap](#) (1)
-



## Step 1 — How to unplug and discharge before repair



- Power down your PC and remove the power cord from the back.

## Step 2



- Press and hold the power button for about 10 seconds, then release.
  - ⓘ This helps drain any remaining power stored in the capacitors, so that you can safely work on the internal components.

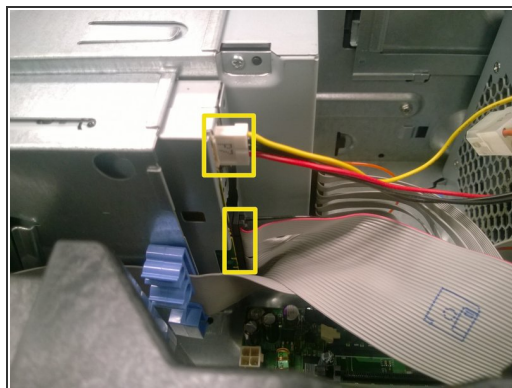
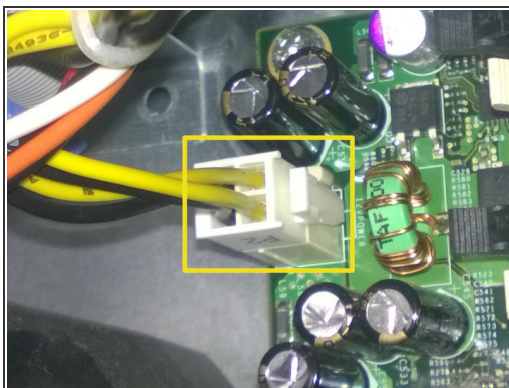
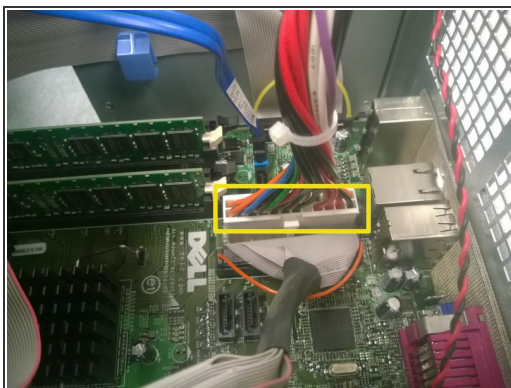


### Step 3 — Dell Optiplex GX620 Side Panel Disassembly



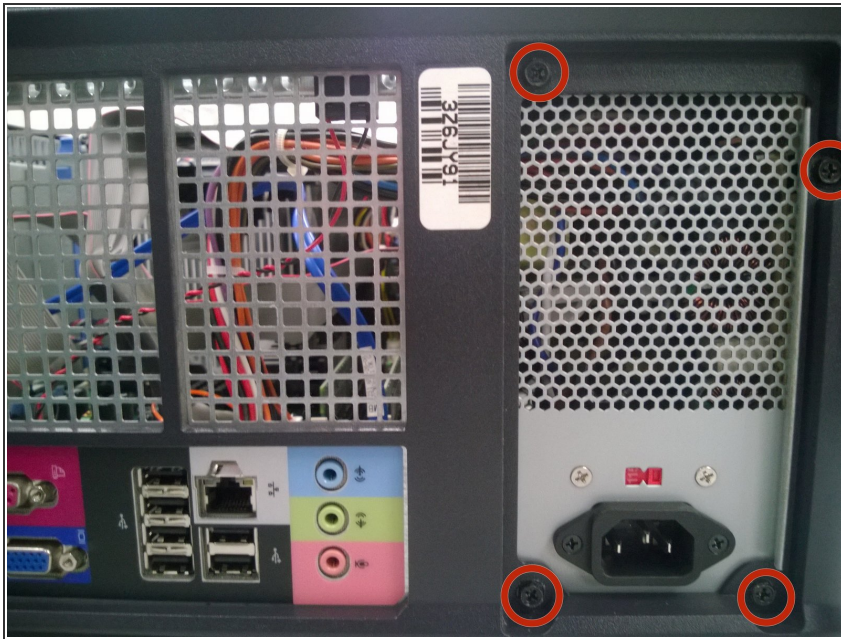
- With the computer standing upright, firmly pull on the tab at the back of the computer.
- When the side panel pops free, gently pull the panel away from the computer.
- ❗ If you have trouble freeing the side panel from the case, you may need to pull the tab a bit harder.

### Step 4 — Disconnect cables



- Gently disconnect the power cables from the motherboard and drives.

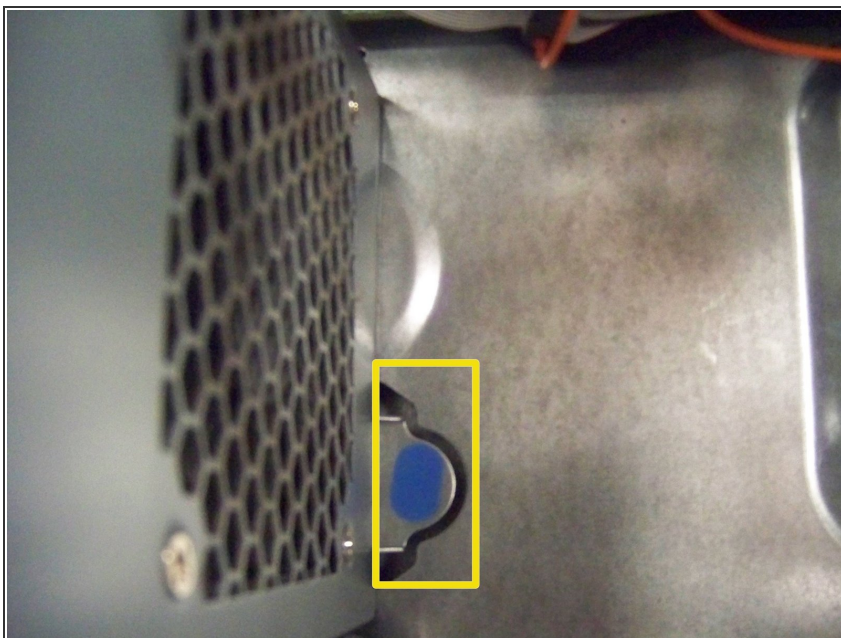
## Step 5 — Remove the screws



- Remove the four screws that attach the power supply on the back of the chassis.

⚠ Do not remove any screws that are not highlighted in red.

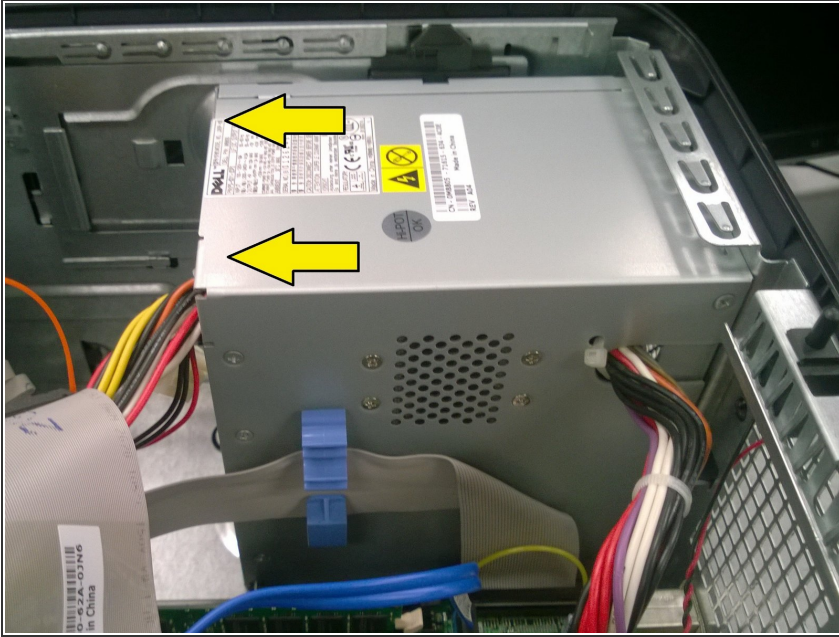
## Step 6 — Press the release button



- Press the blue release button. This is located on the floor of the computer chassis right in front of the power supply.



## Step 7 — Remove the power supply



- Remove the unconnected power supply by sliding it towards the front of the computer. Next, lift it up out of the chassis.

To reassemble your device, follow these instructions in reverse order.