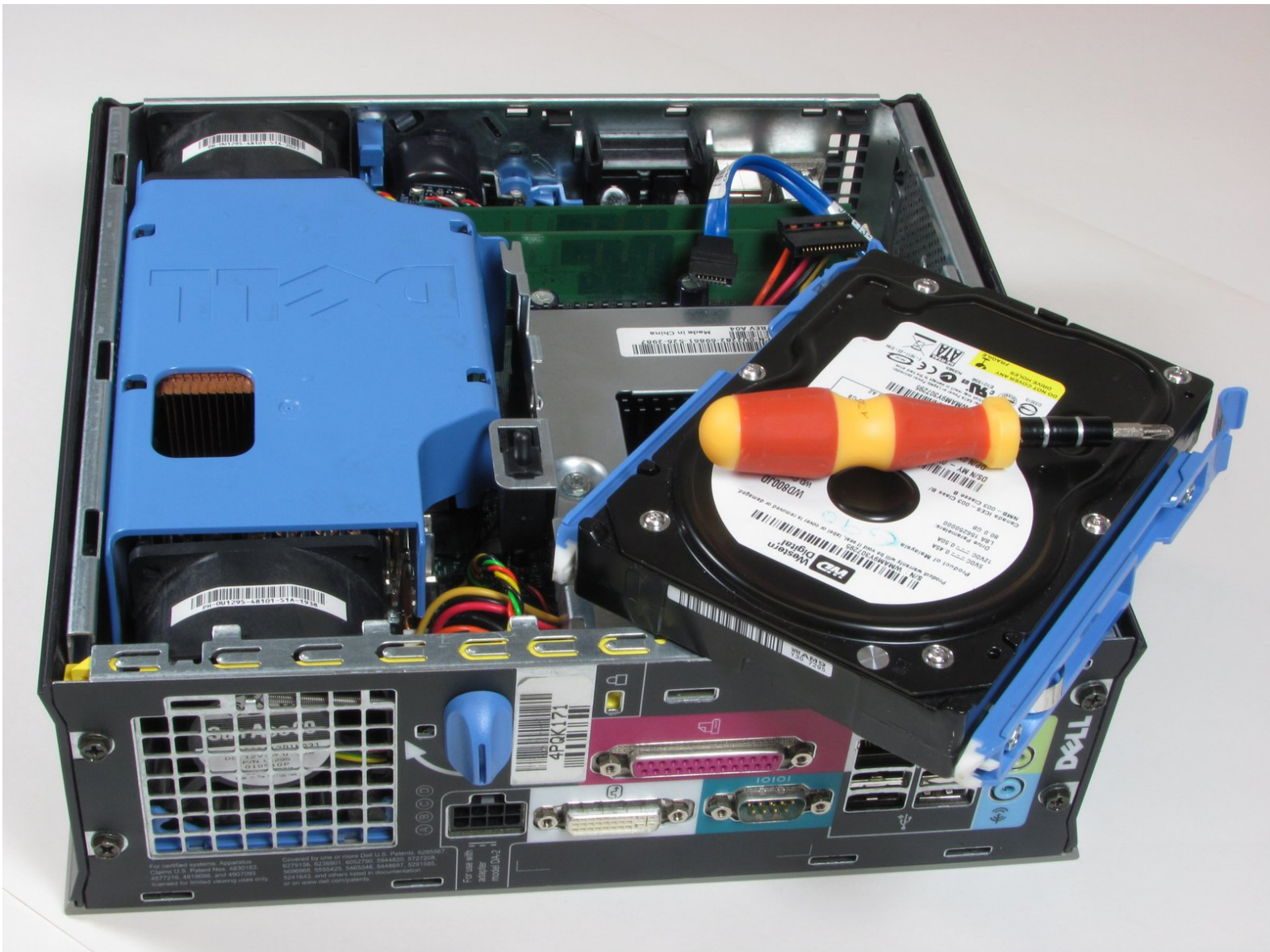




Dell Optiplex SX280 Hard Drive Replacement

Disassembled Hard Drive

Written By: Wyatt



INTRODUCTION

Remove and Replace the Hard Drive

Step 1 — Panel Cover



⚠ Make sure the computer is turned off, by selecting the start menu and choosing “Shut Down”.

⚠ Ensure all cables, speakers and other devices are unplugged and turned off before opening the computer case.

Step 2



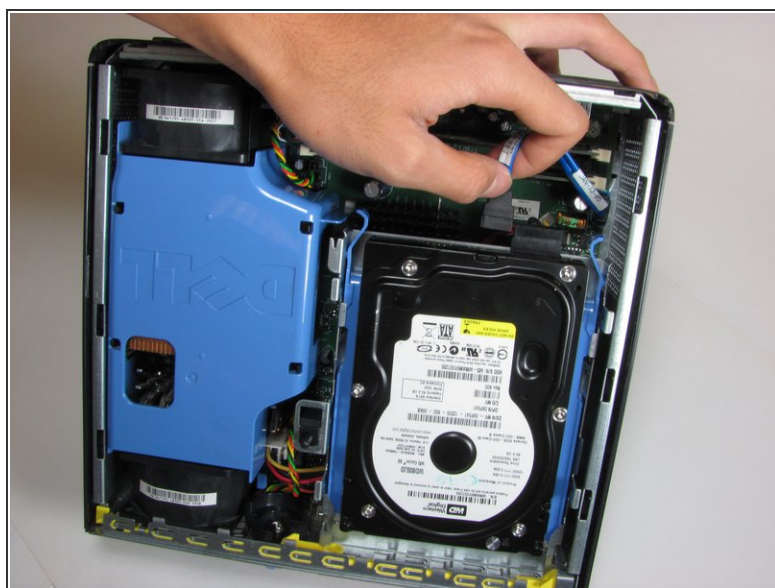
- Lay the computer on its side; you will see a blue knob.
- Turn this knob 90 deg clockwise.

Step 3



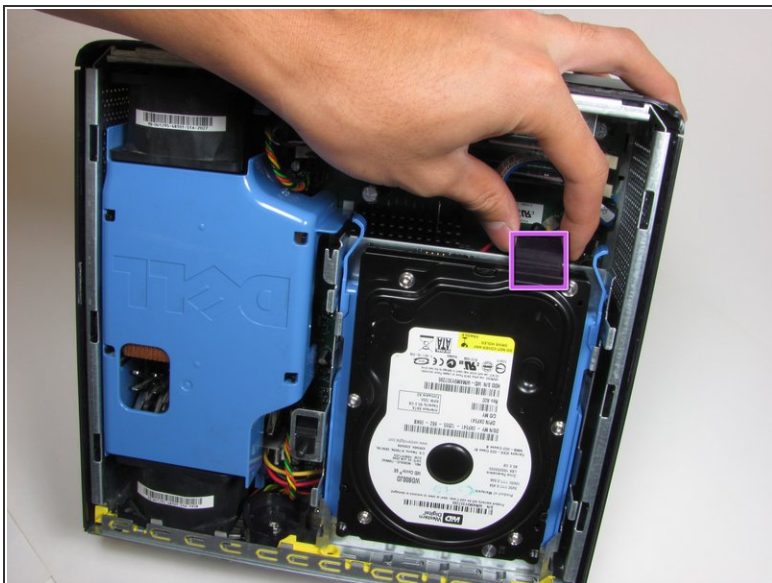
- Slide the panel case forward about 1/2 inch while knob is turned.
- Lift panel case off computer.

Step 4 — Hard Drive



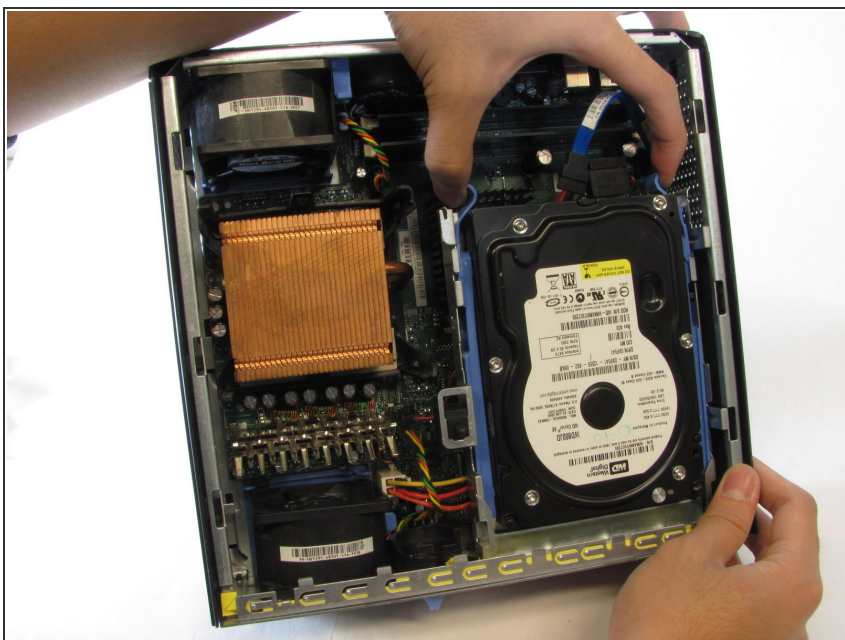
- Unplug the blue cable that connects the hard drive to the motherboard.

Step 5



- Unplug the power supply, distinguished by its red and yellow wires (yellow wire obscured from view).

Step 6



- Squeeze the release tabs on either side of the hard drive.

Step 7



- Slide the Hard Drive out while squeezing the tabs.

To reassemble your device, follow these instructions in reverse order.