



# Dell Optiplex SX280 Motherboard Replacement

Motherboard

Written By: Tom



---

## INTRODUCTION

Remove the Motherboard from the computer.



### TOOLS:

- [Phillips #2 Screwdriver](#) (1)
-

## Step 1 — Panel Cover



- ⚠ Make sure the computer is turned off, by selecting the start menu and choosing "Shut Down".
- ⚠ Ensure all cables, speakers and other devices are unplugged and turned off before opening the computer case.

## Step 2



- Lay the computer on its side; you will see a blue knob.
- Turn this knob 90 deg clockwise.

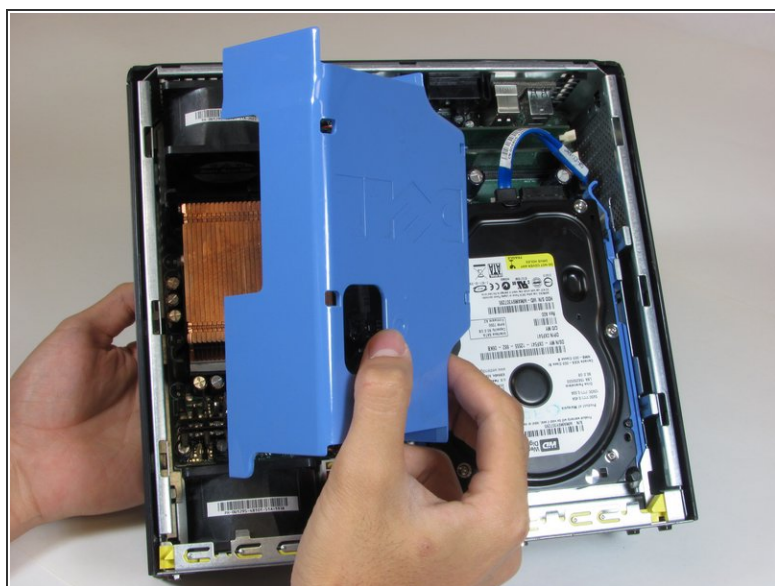


### Step 3



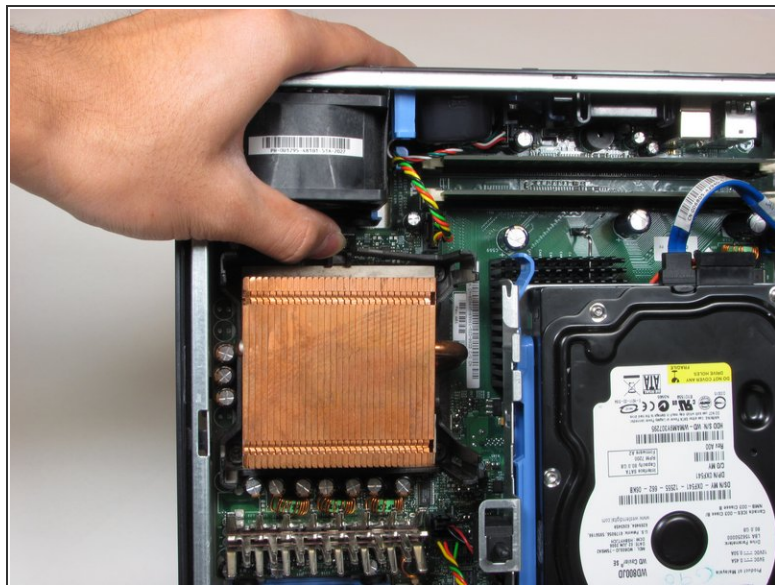
- Slide the panel case forward about 1/2 inch while knob is turned.
- Lift panel case off computer.

### Step 4 — Heat Sink



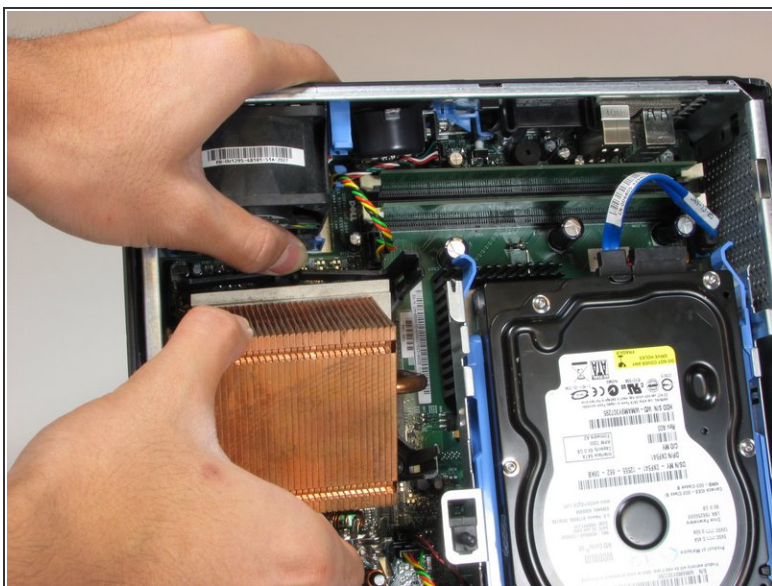
- Remove the large blue cover from the computer, there are no screws or tabs keeping it in place.

## Step 5



- Press down on the release tab above the heat sink.

## Step 6



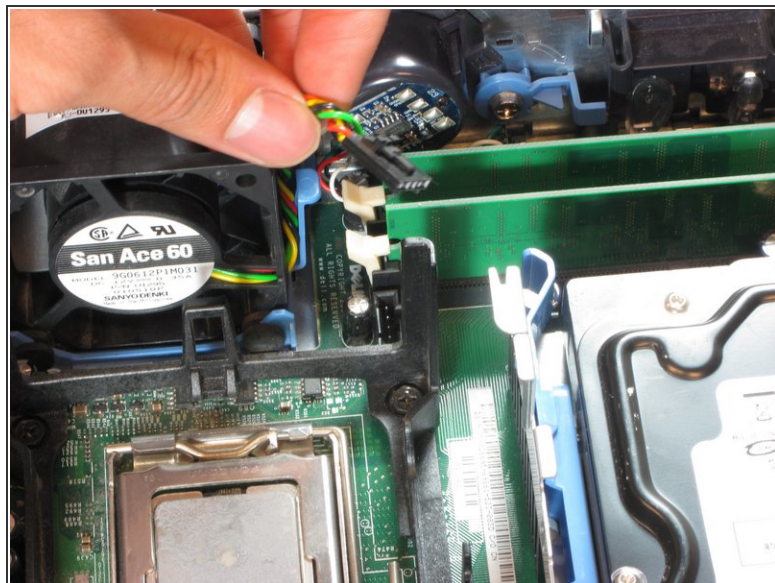
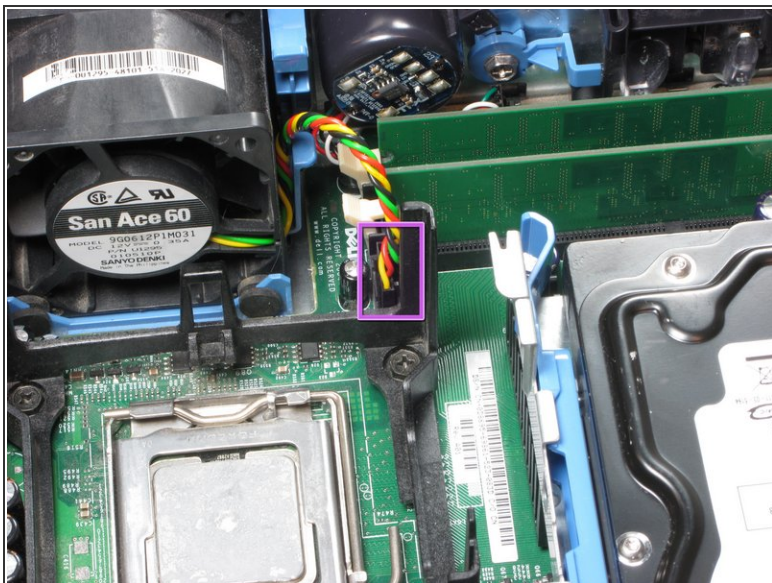
- Pull the heat sink out of the computer while pressing on the release tab.



When reassembling make sure to clean the processor and heat sink of all old thermal paste and apply new paste to the processor



## Step 7 — Upper Fan



- Remove the power supply that connects the upper fan to the motherboard. The power supply has black, red, green and yellow wires.

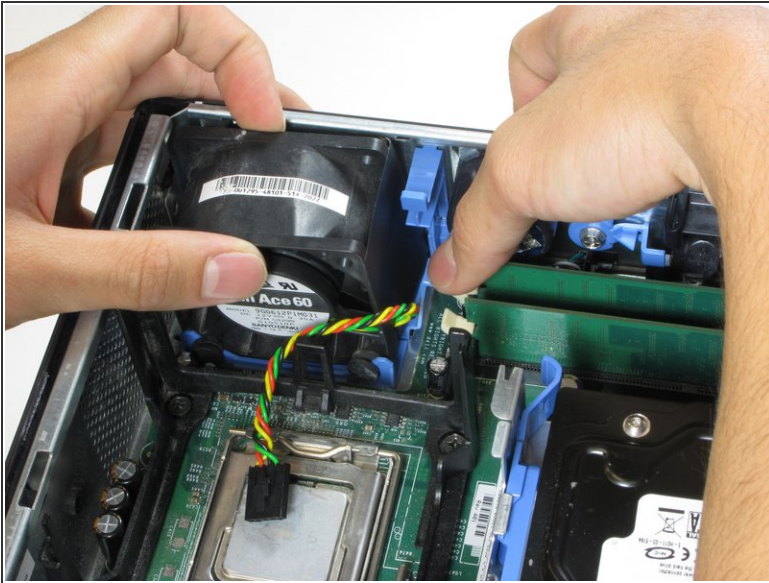
## Step 8



- Remove the rubber grommets from the base of the fan. A spudger may be useful.

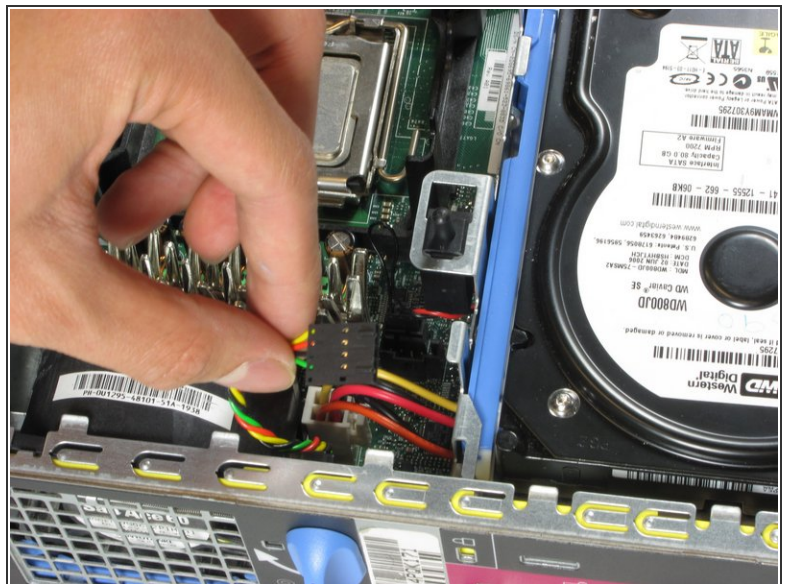
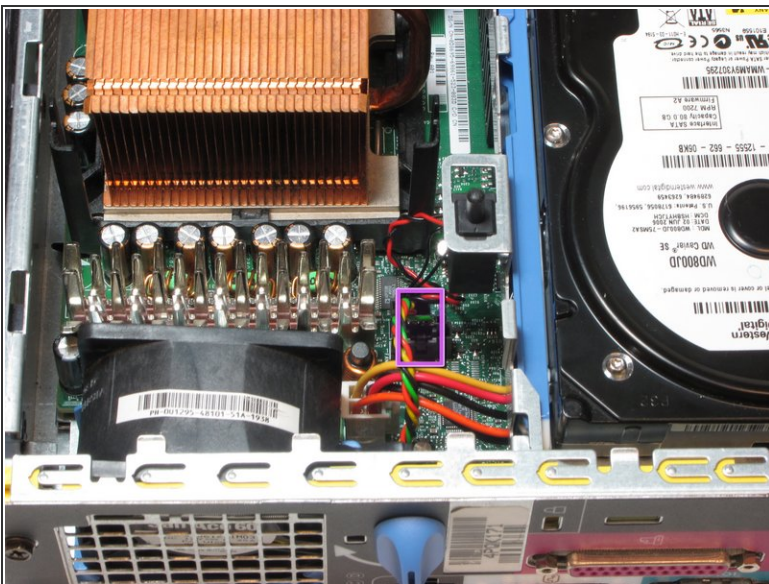


## Step 9



- Press on the blue release tab and pull the upper fan out of the computer.

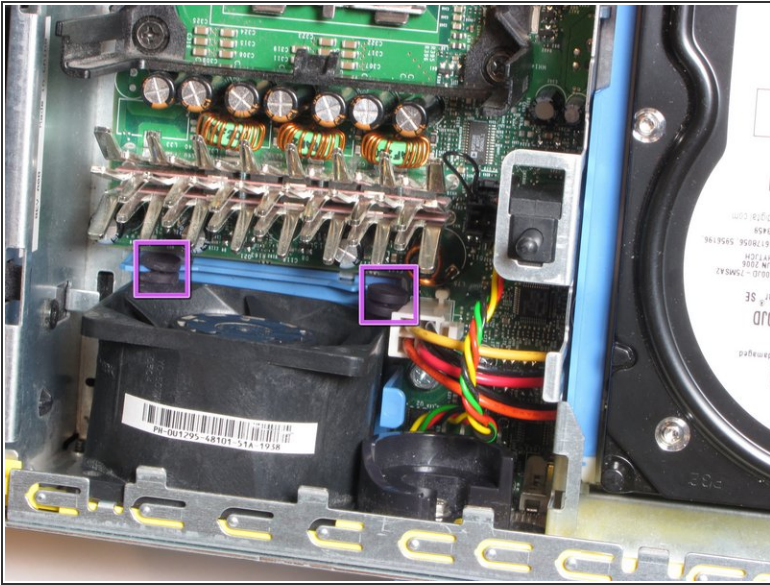
## Step 10 — Lower Fan



- Remove the power supply that connects the lower fan to the motherboard, distinguished by its black, red, green and yellow wires.
- ⓘ Make sure to press on the release tab while removing the power connector.

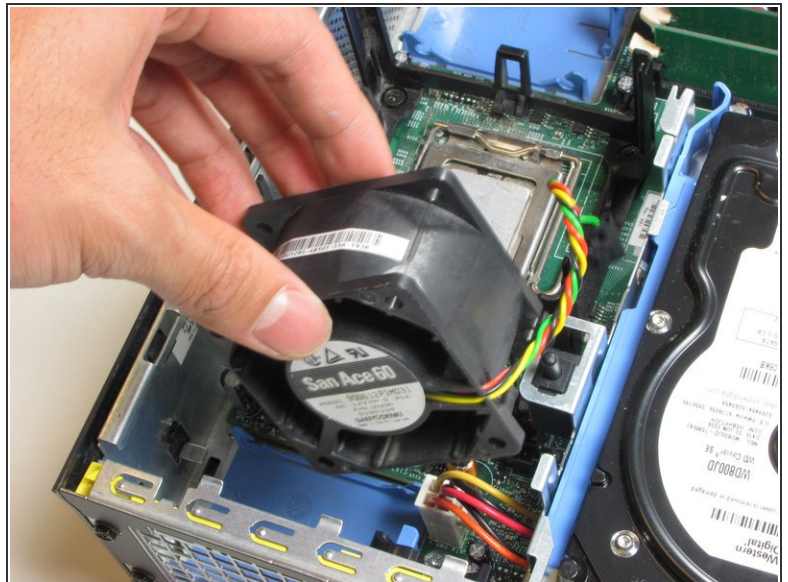
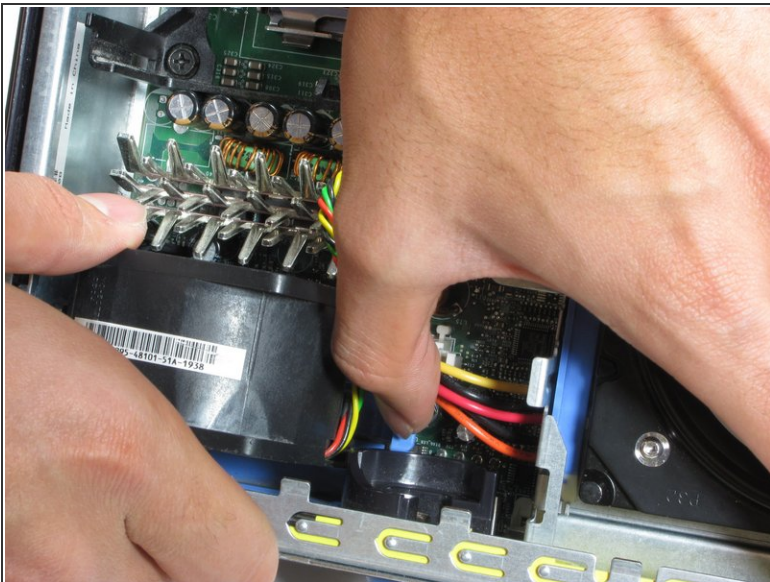


## Step 11



- Remove the rubber grommets from the base of the fan. A spudger may be useful.

## Step 12



- Press on the blue release tab and remove the fan.

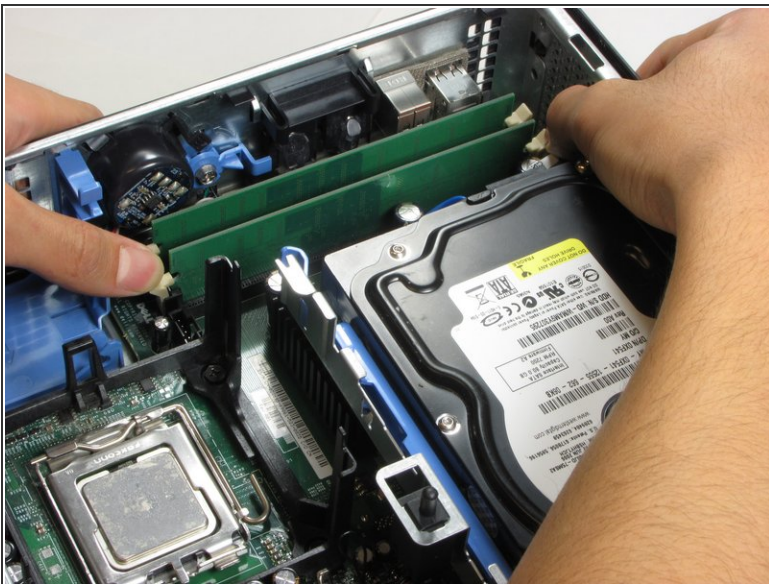


## Step 13 — RAM



- The RAM are the two green cards in the corner of the computer.
- At each end of the card, there are two white clips securing the RAM to the Motherboard.

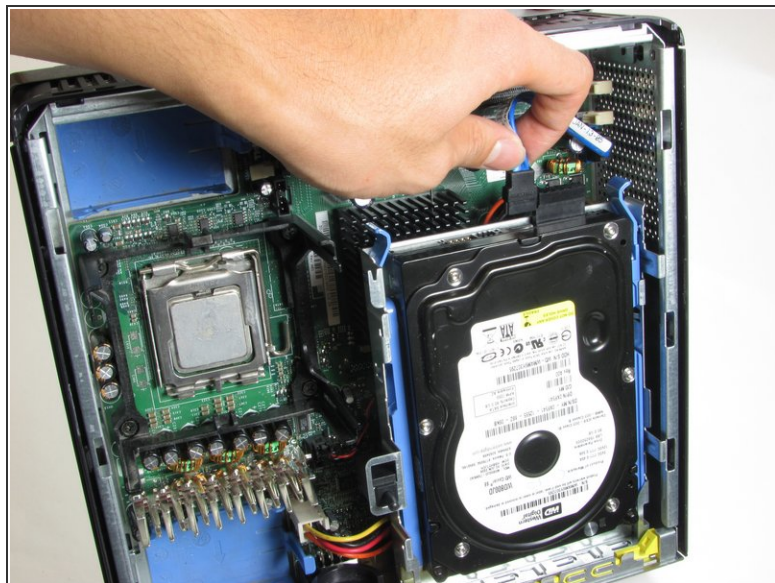
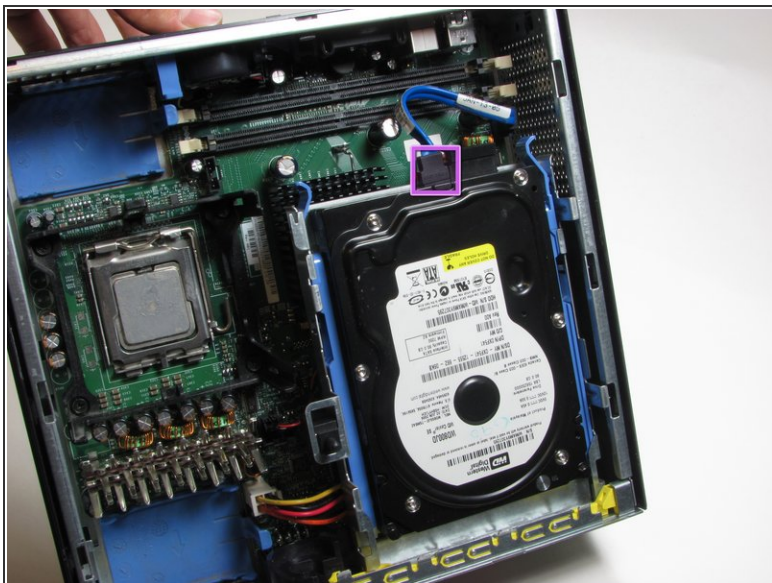
## Step 14



- Push down both white clips with your thumbs until you hear a click.
- The RAM cards can now be removed.

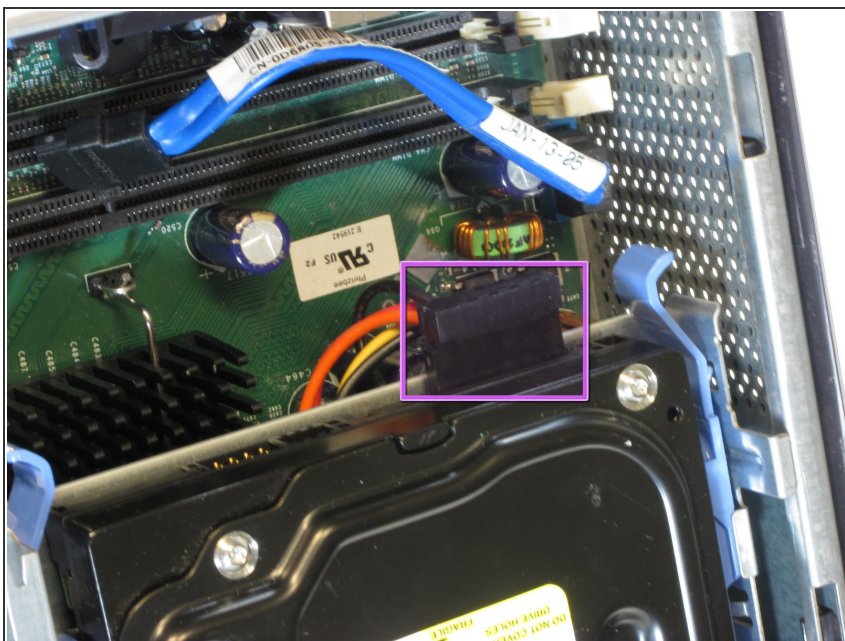


## Step 15 — Hard Drive



- Unplug the blue cable that connects the hard drive to the motherboard.

## Step 16



- Unplug the power supply, distinguished by its red and yellow wires.



## Step 17



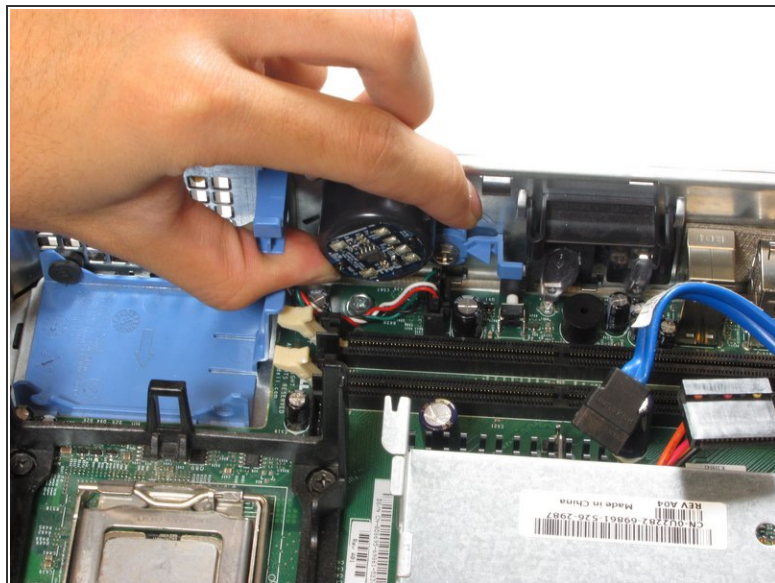
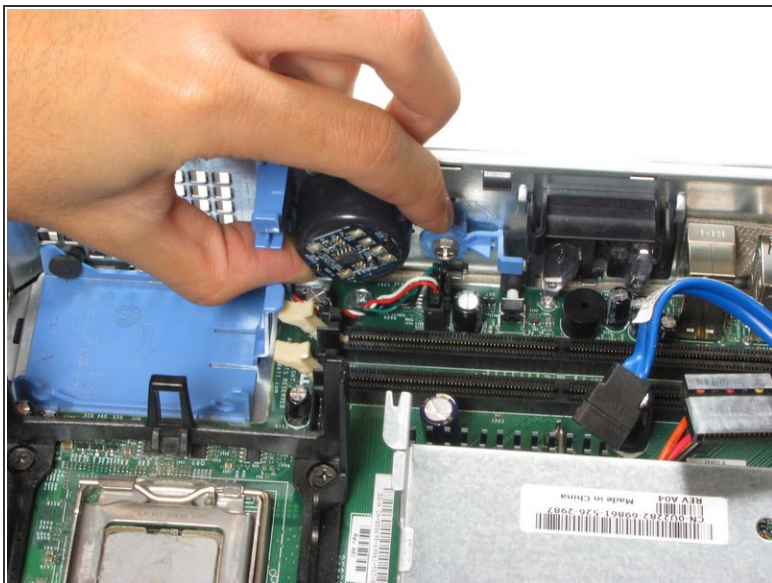
- Squeeze the release tabs on either side of the hard drive.
- Then slide the hard drive out of the computer while squeezing the tabs.

## Step 18 — Motherboard



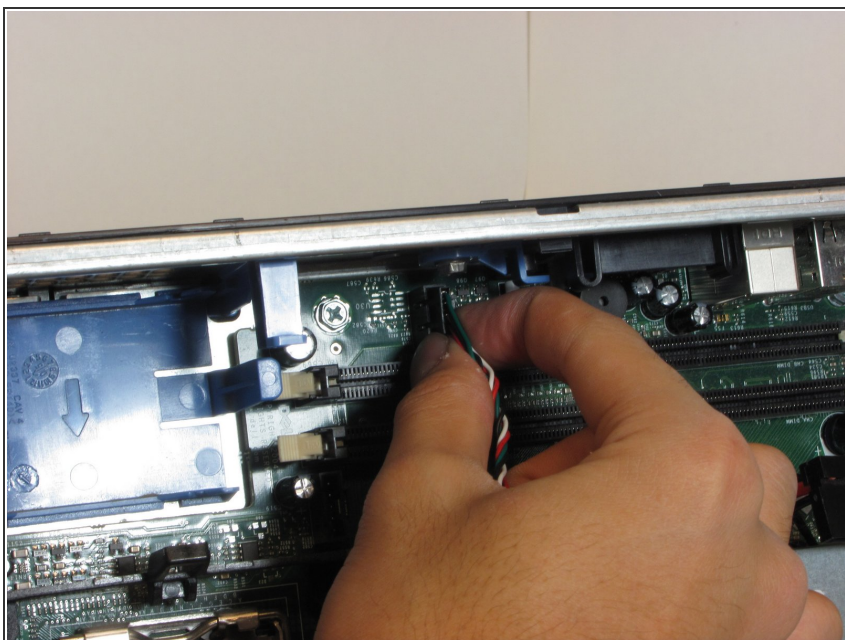
- Unplug the cable that connects the hard drive to the Motherboard.

## Step 19



- Press on the release tab and remove the motherboard speaker which is attached to the side of the tower.

## Step 20



- Unplug the power cable attached to the motherboard speaker.
- ⓘ Make sure to press on the release tab while removing the power cable.



## Step 21



- Remove four screws located at the back of the computer tower.

## Step 22



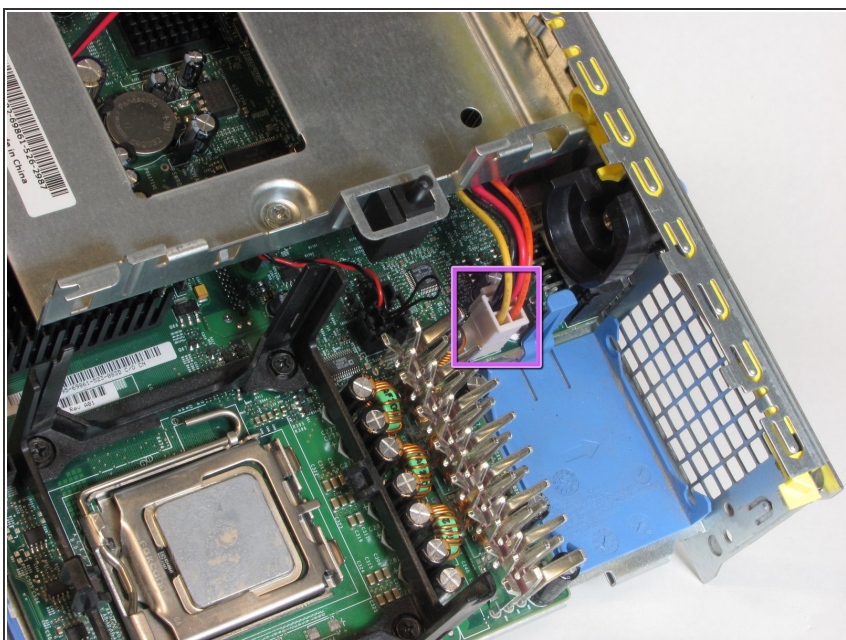
- Carefully detach the motherboard from the computer case.

## Step 23



- Lift the motherboard from the rest of the computer case.

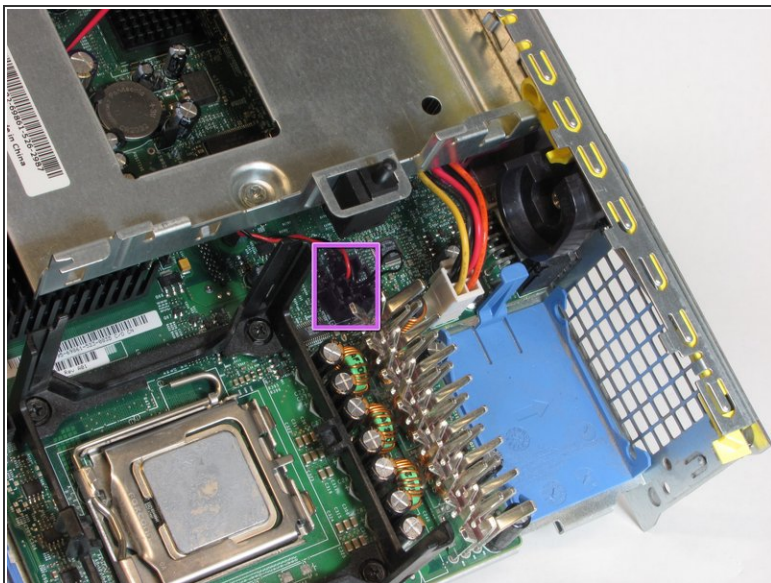
## Step 24



- Unplug the cable that powers the hard drive, which has orange, red and yellow wires.
- ① Make sure to press the release tab while removing the cable.



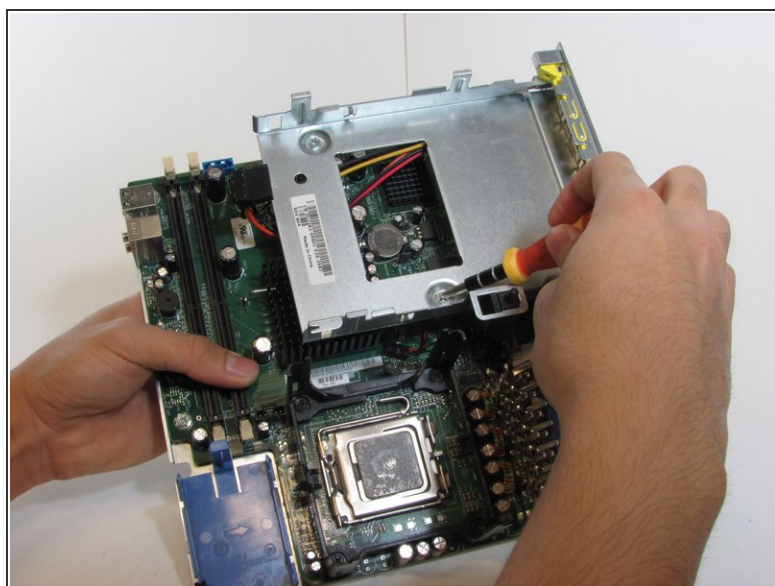
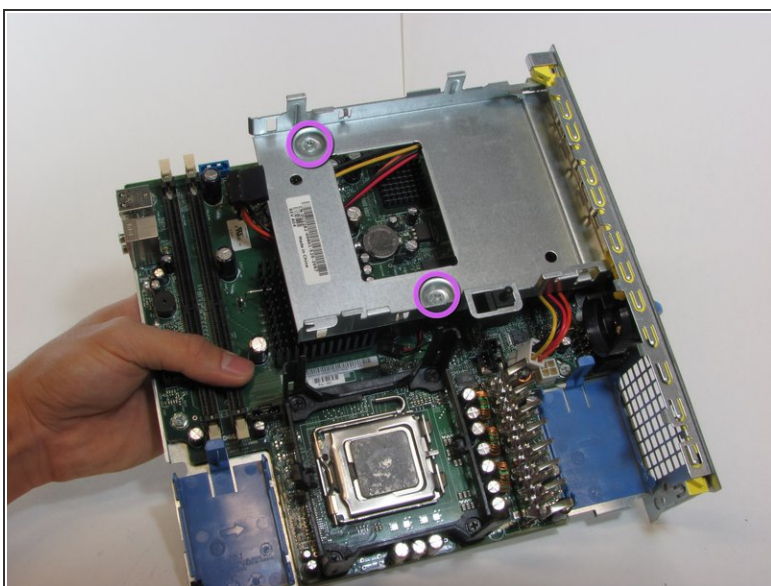
## Step 25



- Unplug the cable that powers the emergency shut off, distinguished by its red wires.

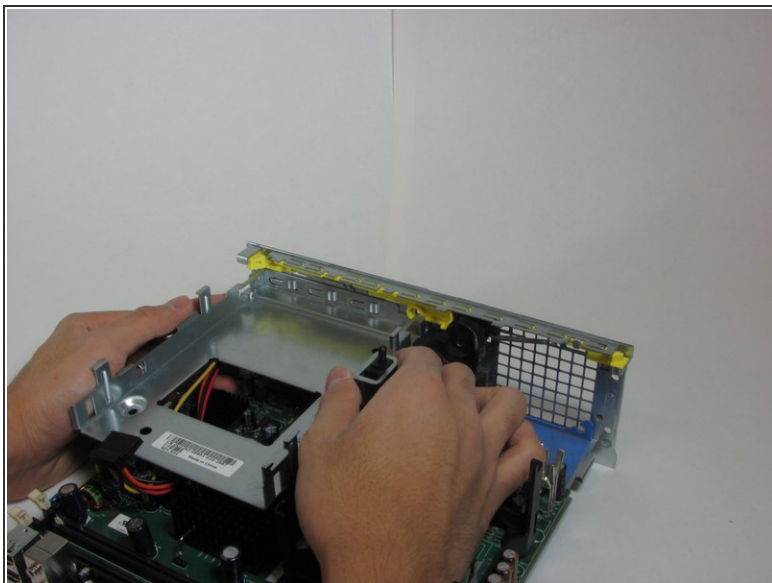
**i** Make sure to press on the release tab while removing the emergency shut off.

## Step 26



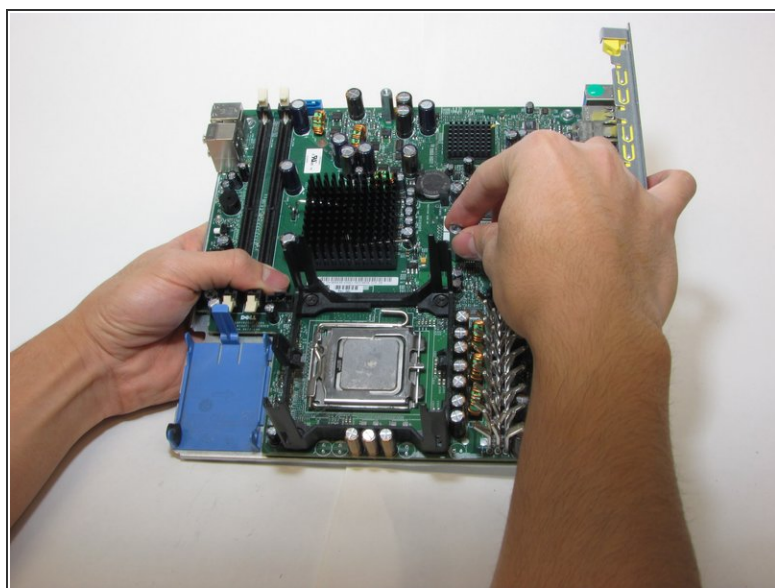
- Remove two screws from the Hard Drive Stand.

## Step 27



- Slide the Hard Drive Stand to left side.
- Remove the stand from the rest of the rear panel.

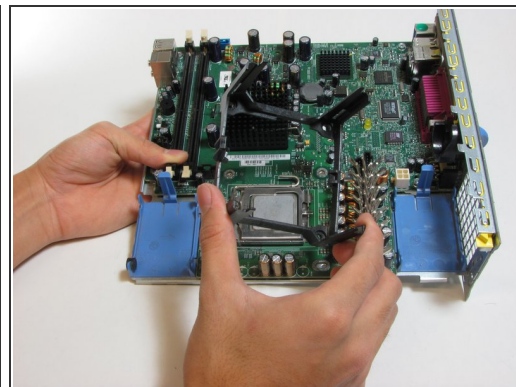
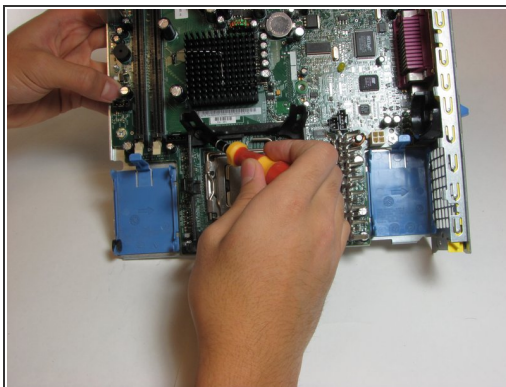
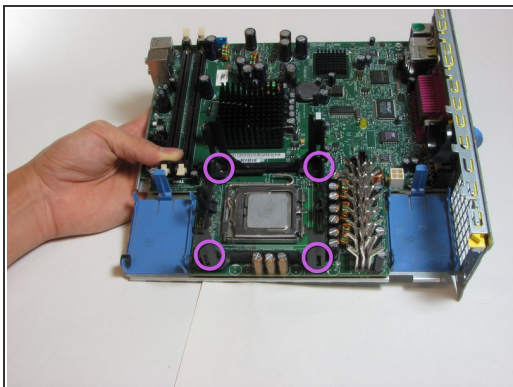
## Step 28



- Remove the studs that support the Hard Drive Stand from the motherboard.
- The studs can be removed by hand.

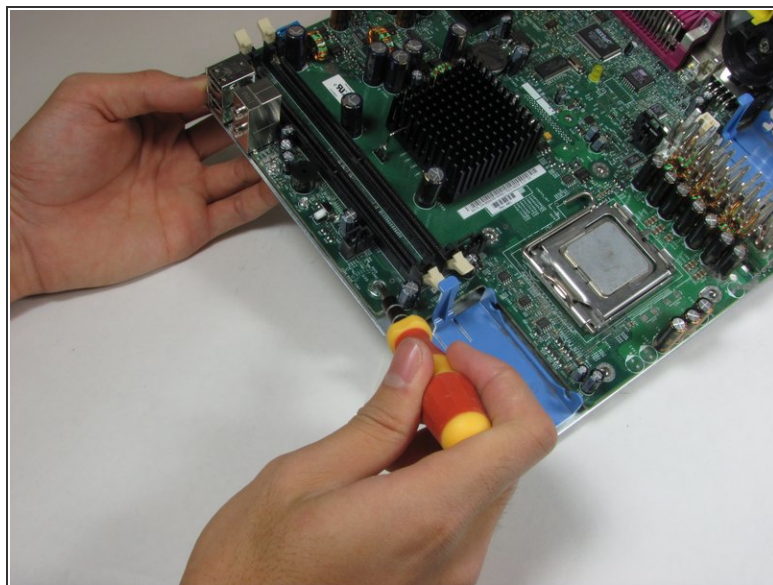


## Step 29



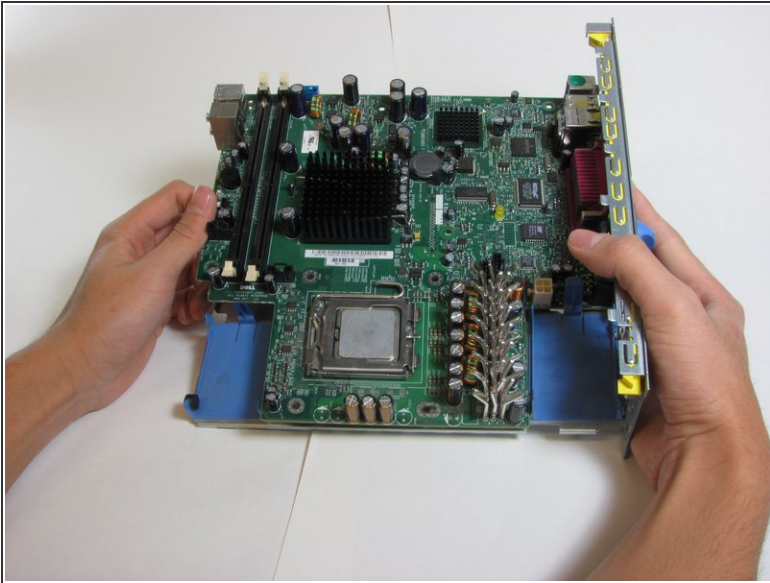
- Remove the four screws located on heat sink stand.
- The heat sink stand can now be lifted from the motherboard.

## Step 30



- Remove the four screws holding the motherboard to the rear computer panel.

## Step 31



- The motherboard can now be removed from the remaining panel.

To reassemble your device, follow these instructions in reverse order.