



Written By: Wyatt



---

# INTRODUCTION

Prerequisite Only



## TOOLS:

- [Spudger](#) (1)
-

## Step 1 — Panel Cover



- ⚠ Make sure the computer is turned off, by selecting the start menu and choosing "Shut Down".
- ⚠ Ensure all cables, speakers and other devices are unplugged and turned off before opening the computer case.

## Step 2



- Lay the computer on its side; you will see a blue knob.
- Turn this knob 90 deg clockwise.

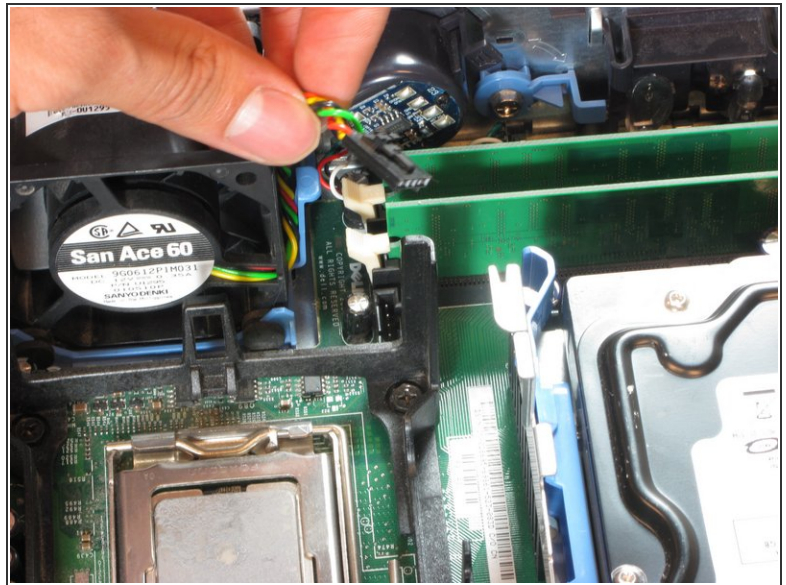
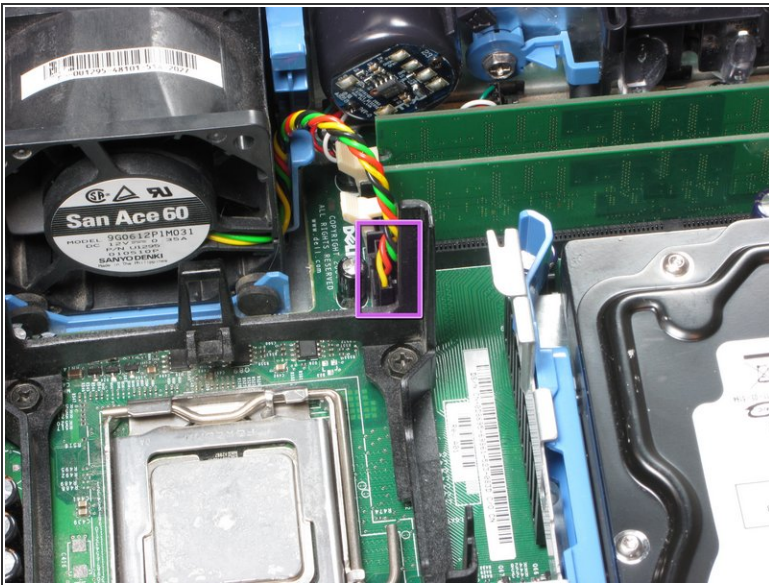


### Step 3



- Slide the panel case forward about 1/2 inch while knob is turned.
- Lift panel case off computer.

### Step 4 — Upper Fan



- Remove the power supply that connects the upper fan to the motherboard. The power supply has black, red, green and yellow wires.

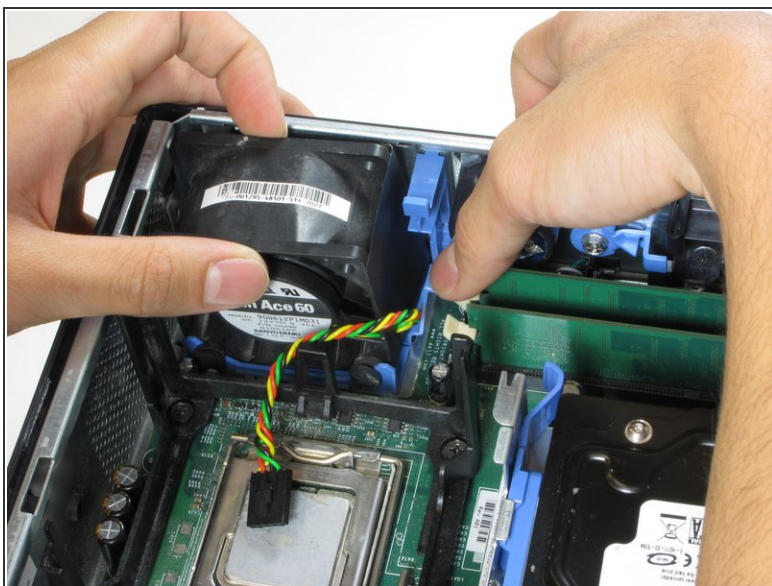


## Step 5



- Remove the rubber grommets from the base of the fan. A spudger may be useful.

## Step 6



- Press on the blue release tab and pull the upper fan out of the computer.

To reassemble your device, follow these instructions in reverse order.