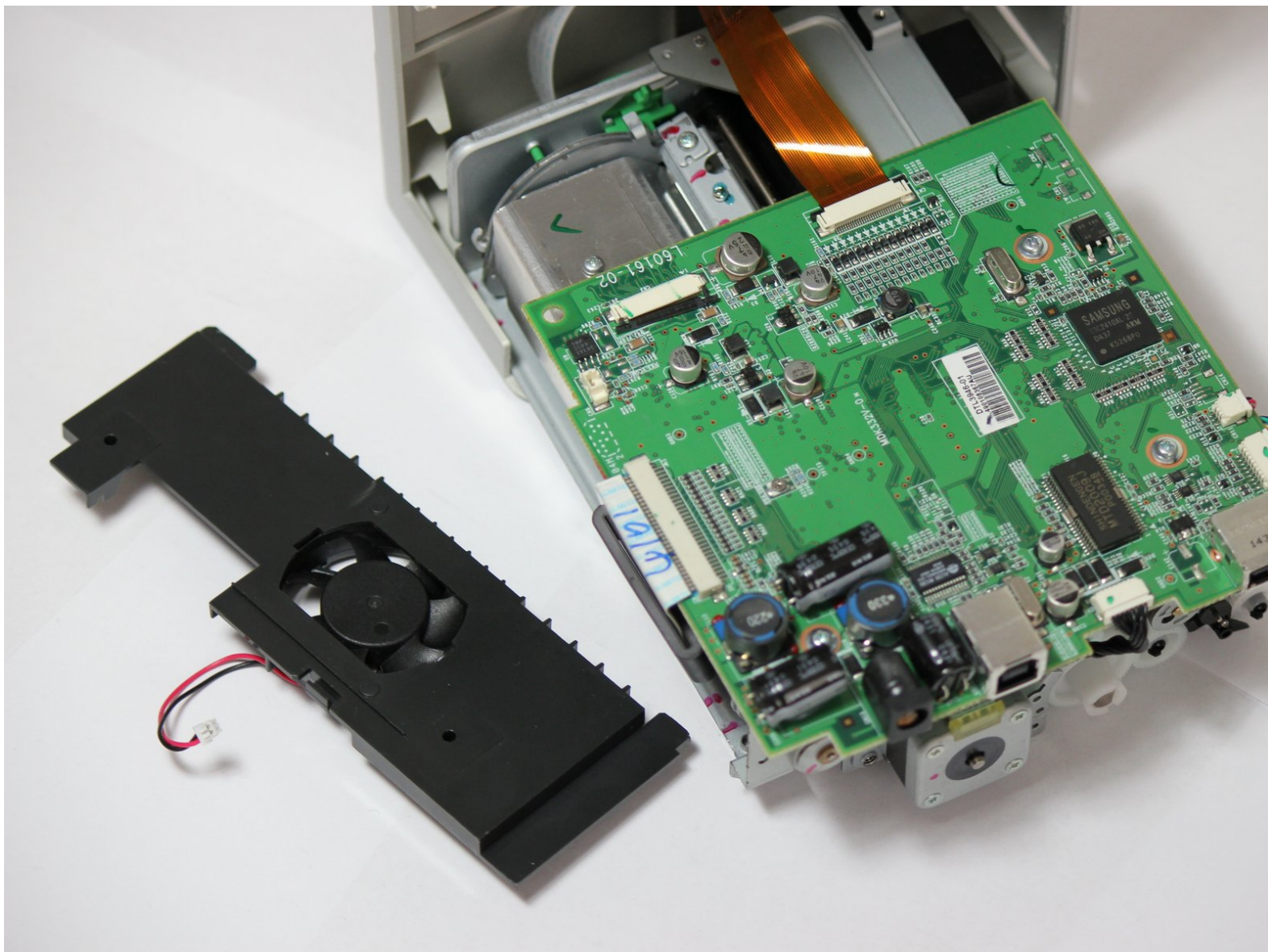




Dell Photo Printer 540 Cooling Fan Replacement

This repair guide will help you in replacing a broken or damaged cooling fan with a new one.

Written By: Alena Raymond



INTRODUCTION

Follow these steps to install a cooling fan.



TOOLS:

- [Phillips #2 Screwdriver](#) (1)
-

Step 1 — Case



- Rotate the photo printer so that the bottom of the case faces upward.

Step 2



- Use a Phillips #2 screwdriver to remove the three 5.65 mm screws on the bottom panel of the case in a counter-clockwise fashion.

Step 3



- Rotate the device so that it is upright again. Under the LCD Panel there is a 9.62 mm screw, unscrew using a Phillips #2 screwdriver.

Step 4



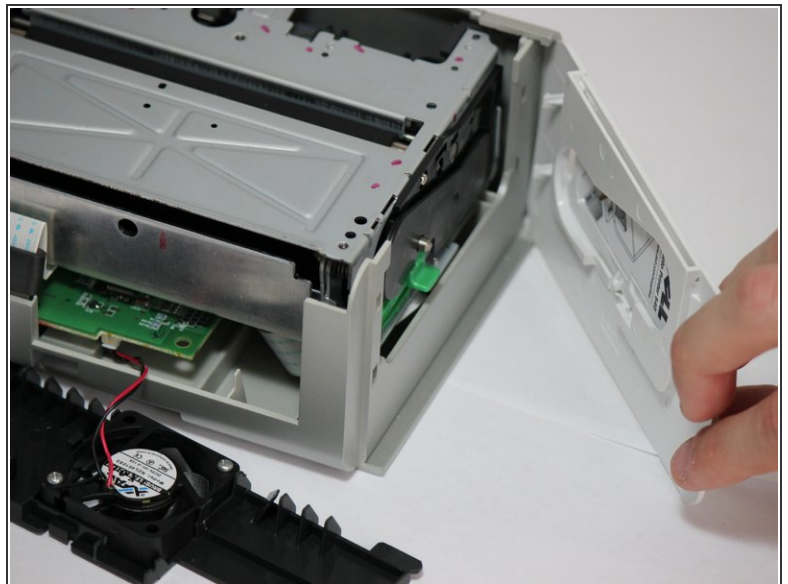
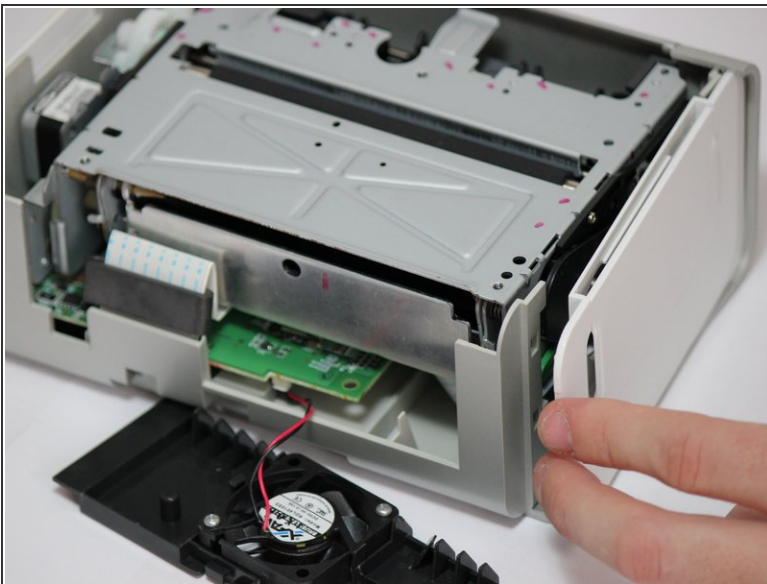
- Remove the back panel of the case by pulling directly back.
- ⓘ Some carefully applied force may be required to remove this part.

Step 5




- Rotate the photo printer so that the bottom panel faces up once again. Now lift off the bottom panel of the case to access all internal components.

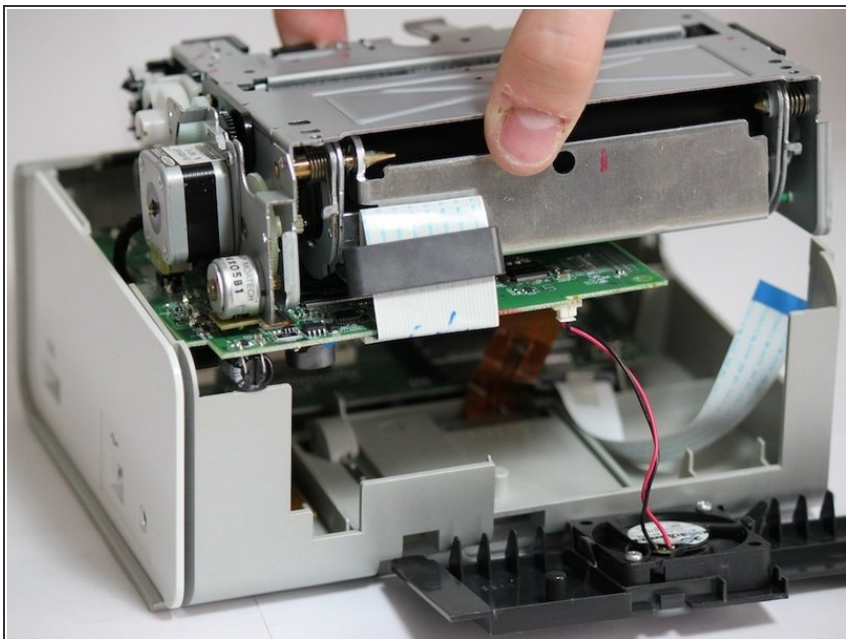
Step 6



- Finally remove the side panel with the ink-cartridge door by holding the right side and pulling backwards with the left side.

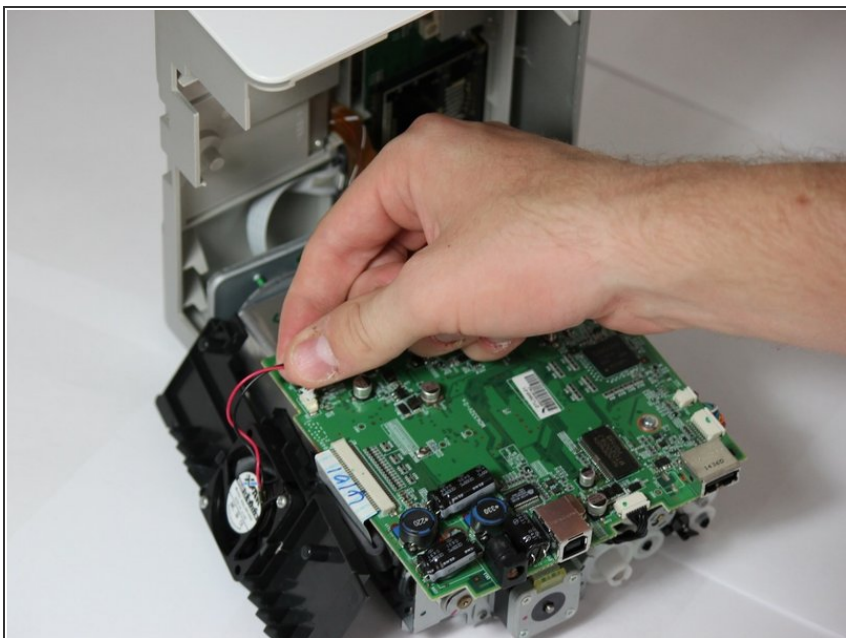
 Caution! The side panel is held in by tabs; don't break these.

Step 7 — Cooling Fan



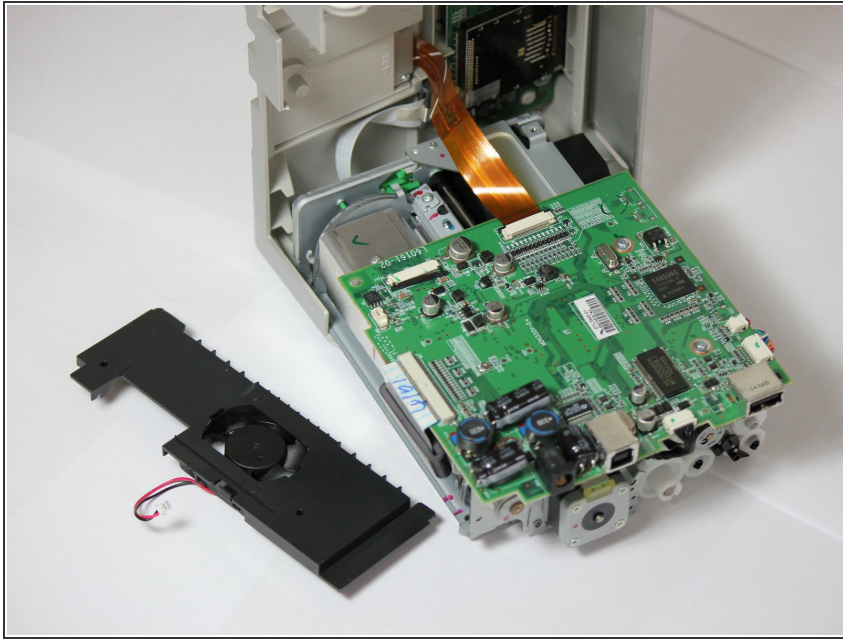
- Carefully remove the inner components of the device by lifting the inner components up and out of the casing.

Step 8



- Locate the red and black cable that is connecting the fan to the top of the logic board.

Step 9



- Carefully, remove the red and black cable from the logic board by pulling gently in order to isolate the cooling fan from the device.

To reassemble your device, follow these instructions in reverse order.