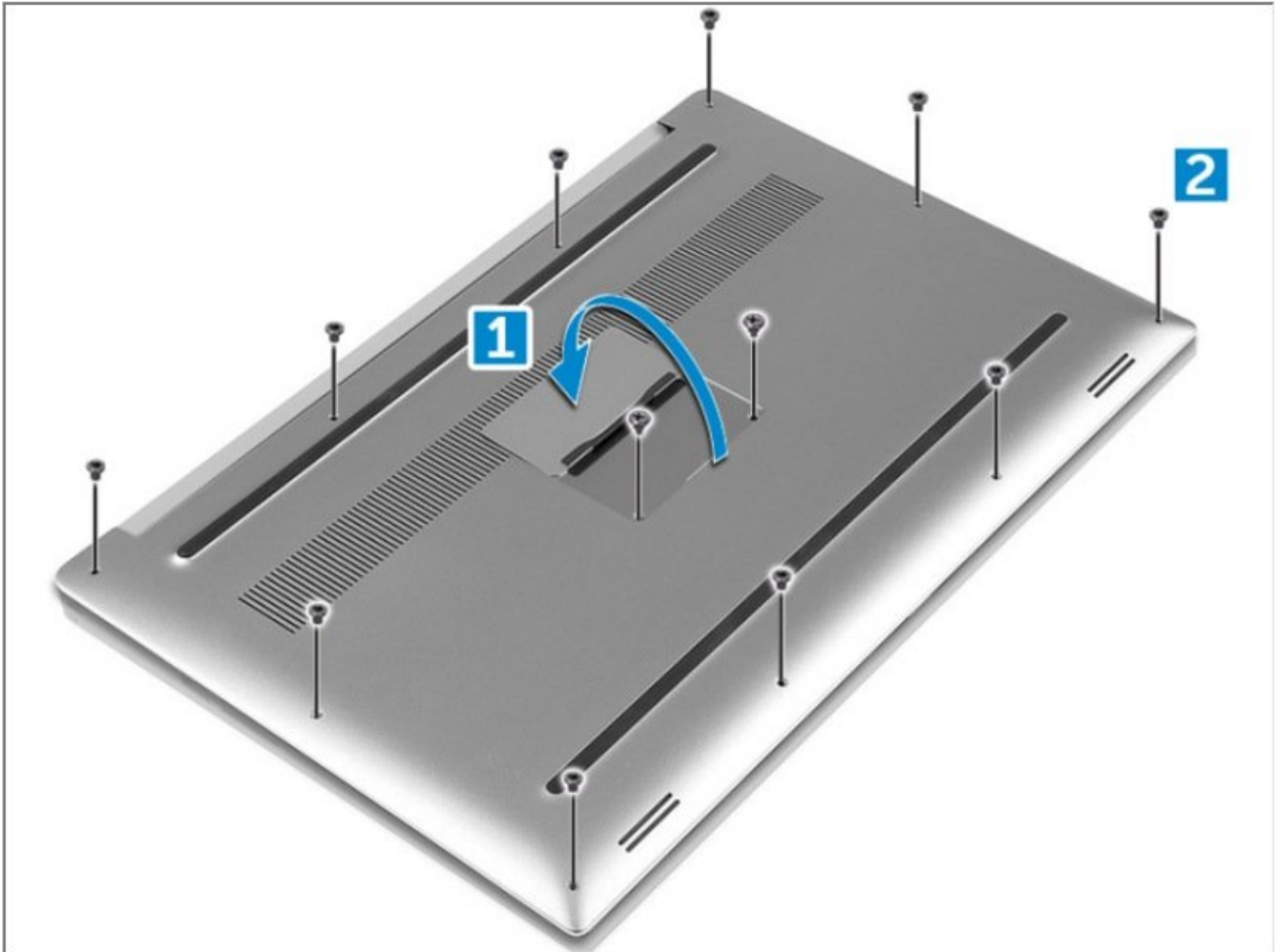




Dell Precision 5520 Base Cover Replacement

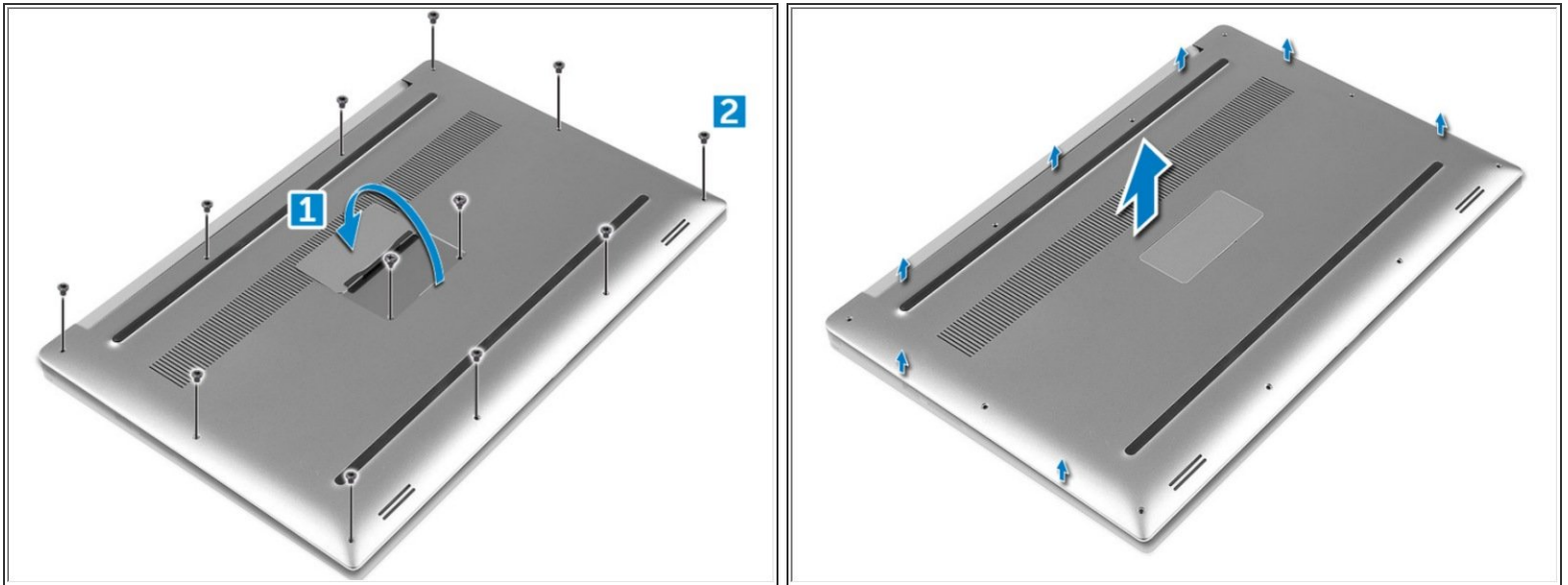
Written By: Johnathan Hammond



 **TOOLS:**

- [T5 Torx Screwdriver](#) (1)
- [Phillips #0 Screwdriver](#) (1)

Step 1 — Base Cover



- Turn the system badge flap over (1) and then remove the ten M2x3 screws that secure the base cover to the computer (2).
 - Pry the edges of the base cover and lift it to remove it from the computer.
- i** NOTE: Use a Torx #5 screwdriver for the base screws and a Philips screwdriver for the two M2x8 screws inside the badge flap.

To reassemble your device, follow these instructions in reverse order.