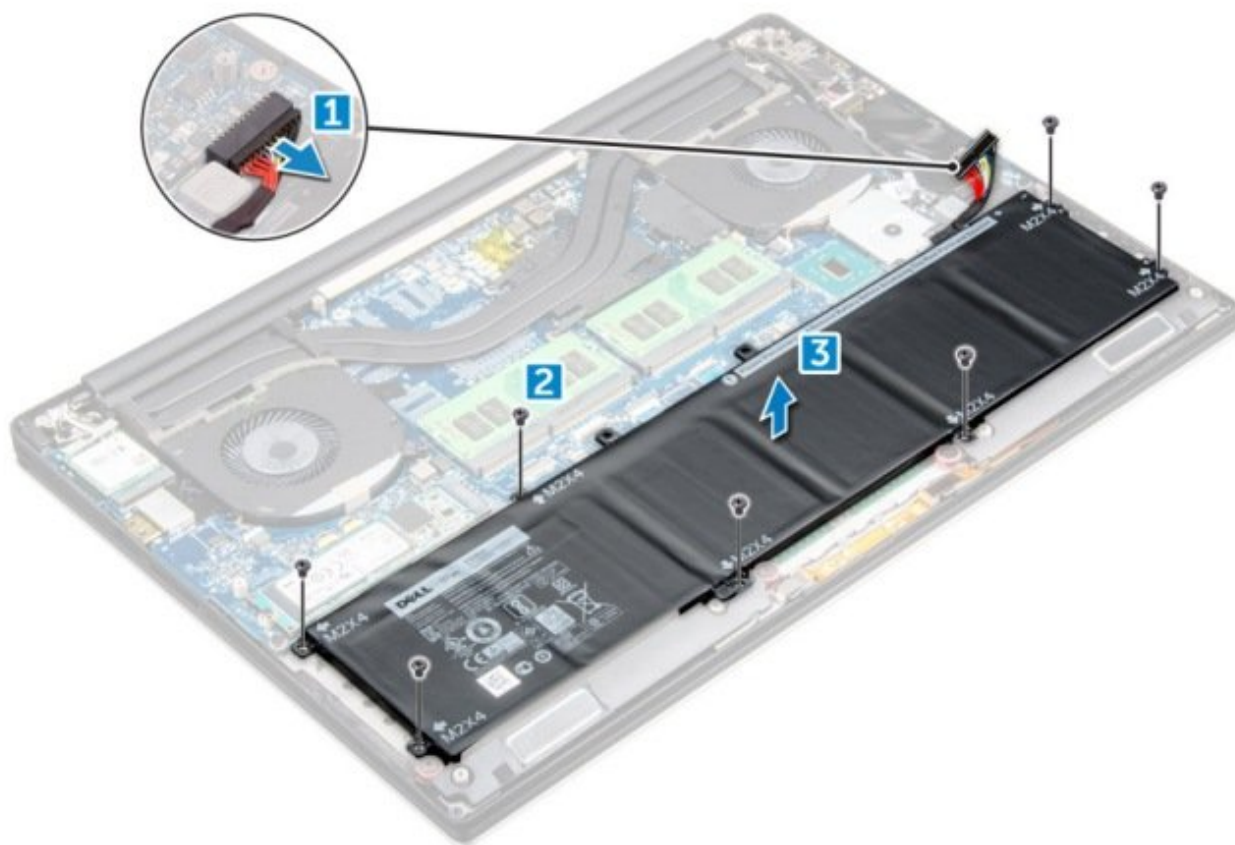




# Dell Precision 5520 Battery Replacement

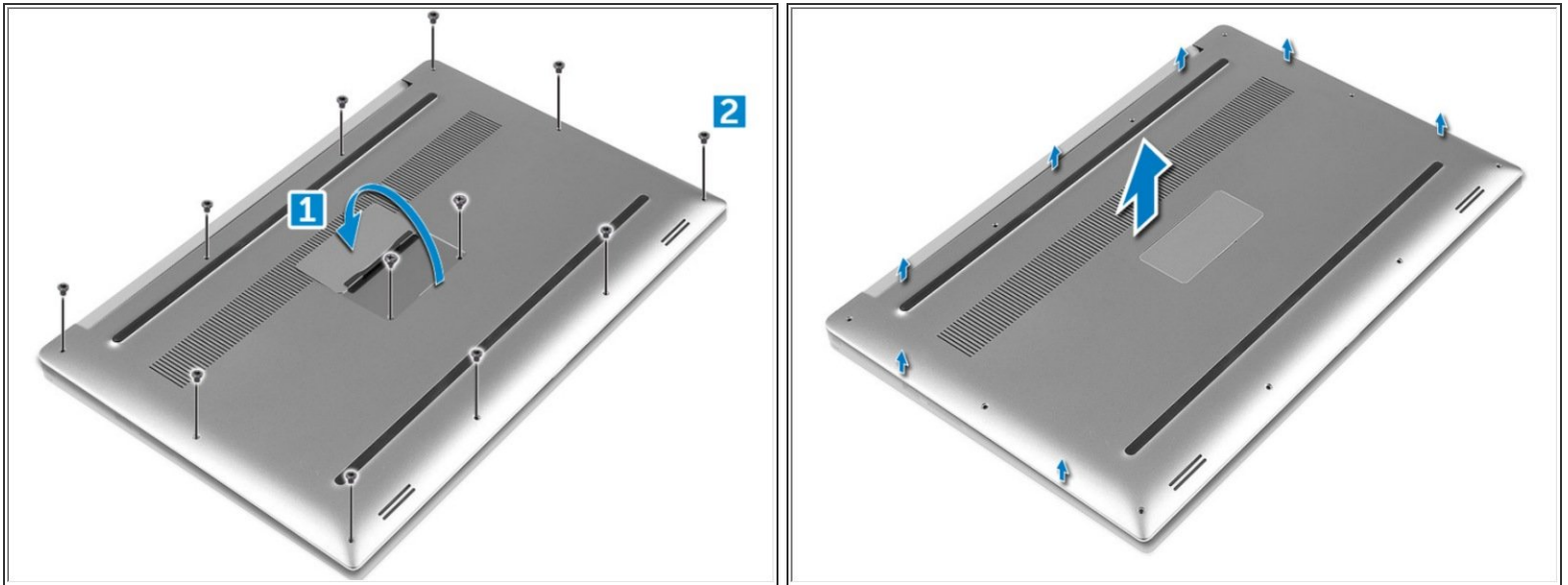
Written By: Johnathan Hammond



 **TOOLS:**

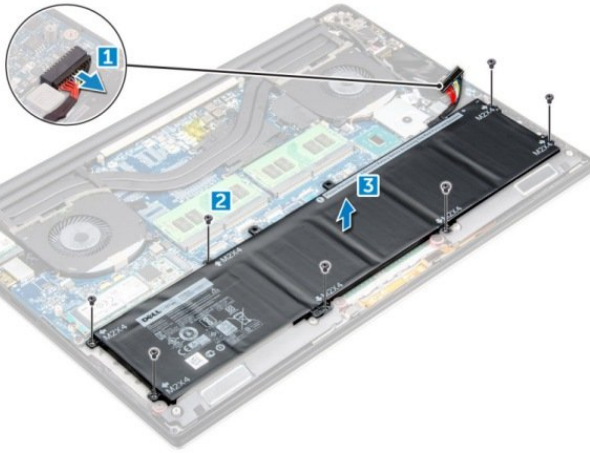
- [T5 Torx Screwdriver](#) (1)
  - [Phillips #0 Screwdriver](#) (1)
-

## Step 1 — Base Cover



- Turn the system badge flap over (1) and then remove the ten M2x3 screws that secure the base cover to the computer (2).
  - Pry the edges of the base cover and lift it to remove it from the computer.
- i** NOTE: Use a Torx #5 screwdriver for the base screws and a Philips screwdriver for the two M2x8 screws inside the badge flap.

## Step 2 — Battery



- Disconnect the battery cable from the system board [1].

- Remove the seven M2x4 screws that secure the battery to the computer [2].

- Lift the battery off the computer [3].

⚠ Do not apply pressure to the surface of the battery

⚠ Do not bend

⚠ Do not use tools of any kind to pry on or against the battery

ⓘ If a battery cannot be removed within the constraints above, please contact Dell technical support

To reassemble your device, follow these instructions in reverse order.