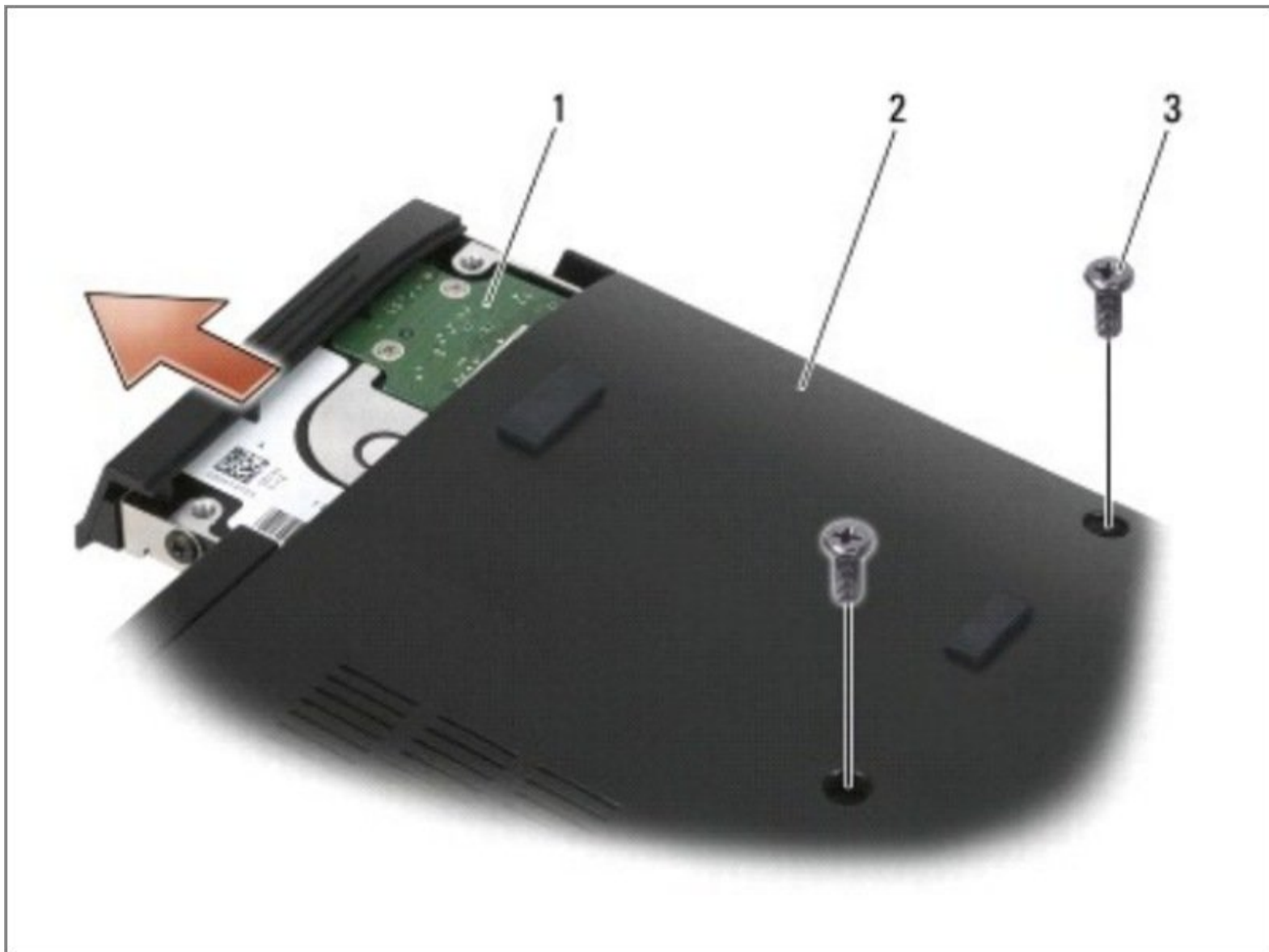




Dell Precision M2400 Hard Drive Replacement

Written By: Johnathan Hammond

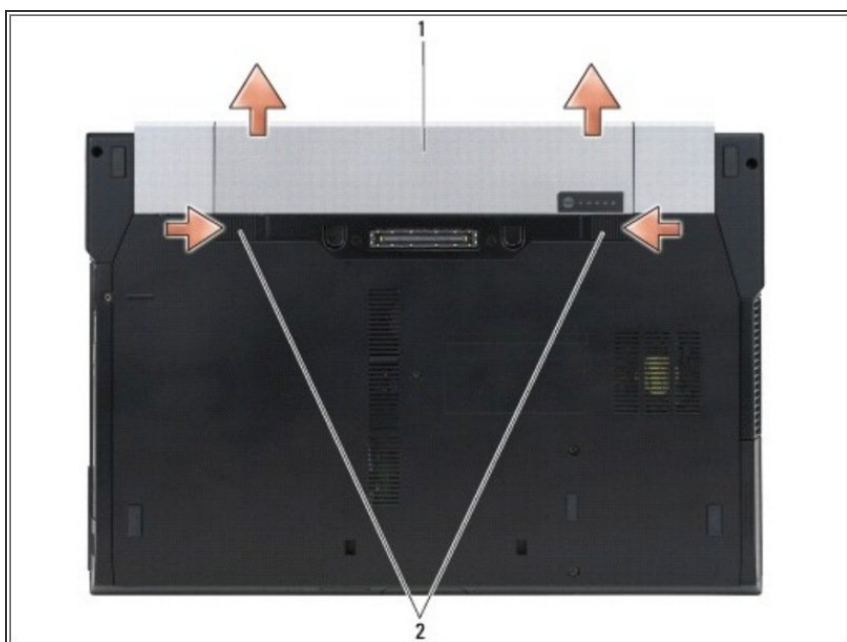




TOOLS:

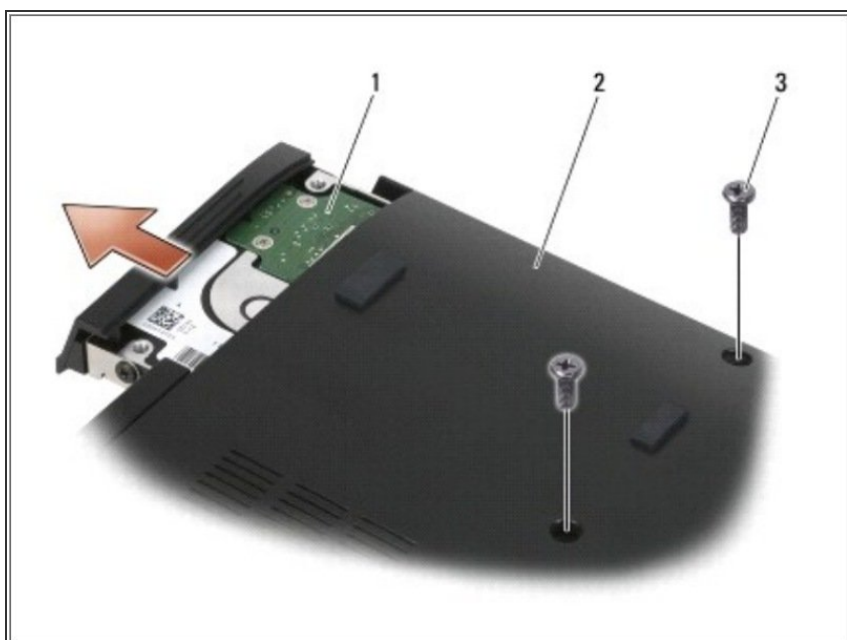
- [Phillips #0 Screwdriver](#) (1)
-

Step 1 — Battery



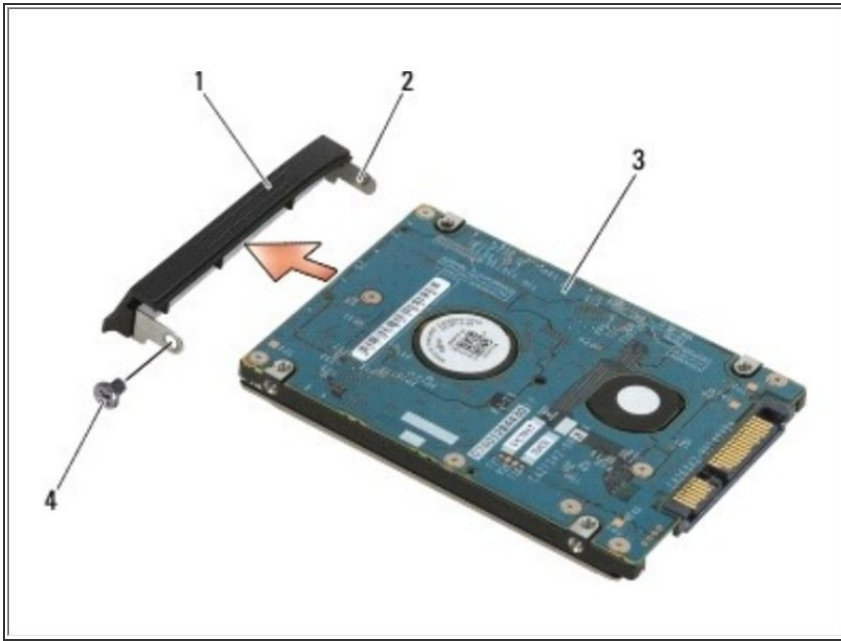
- Slide the battery release latches toward each other to lock them in an open position.
- Slide the battery out of the battery bay.

Step 2 — Hard Drive



- Remove the two M3 x 3-mm screws.
- Slide the hard drive out of the base assembly.

Step 3



- Remove the M3 x 3-mm screw on the hard drive bezel.
- Remove the hard drive bezel.

To reassemble your device, follow these instructions in reverse order.