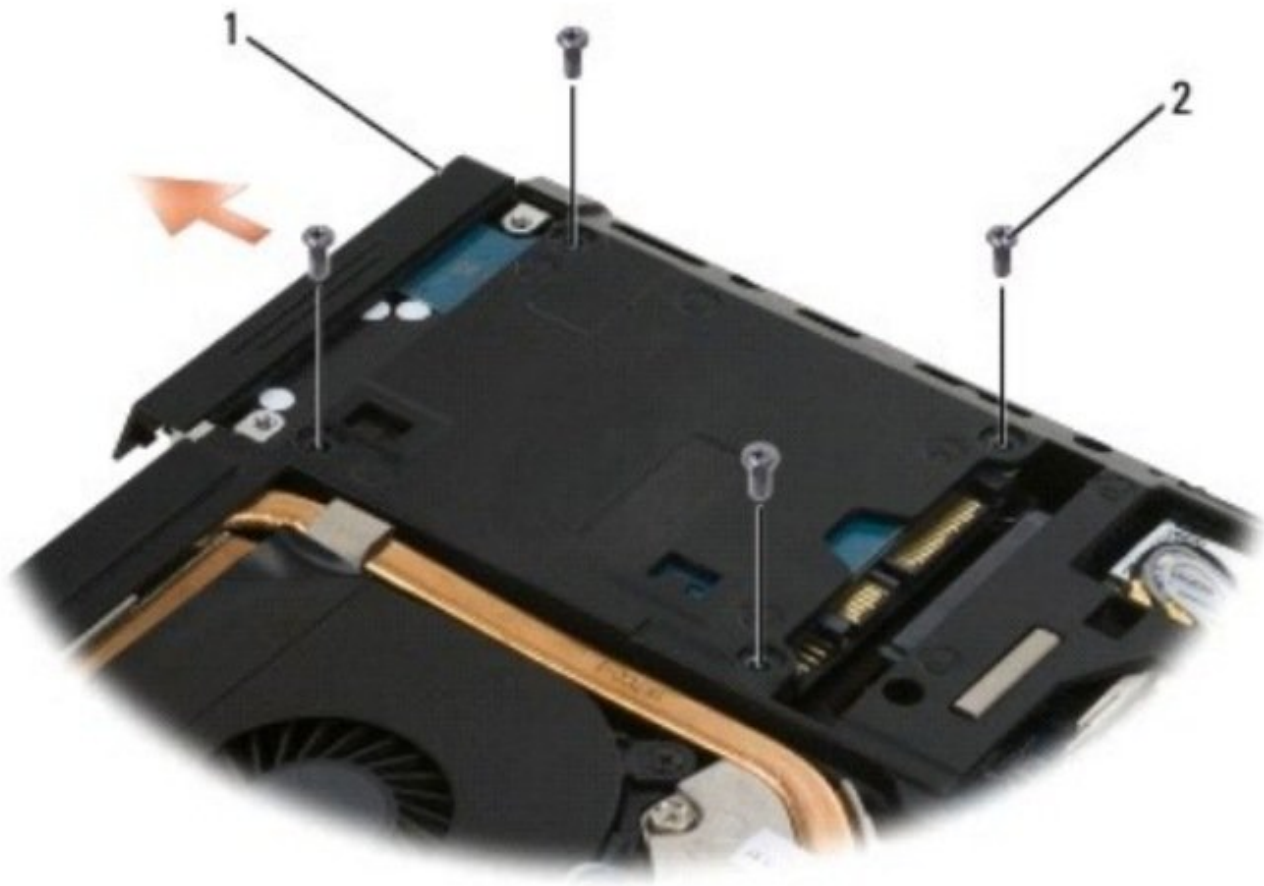




# Dell Precision M4400 Hard Drive Replacement

Written By: Johnathan Hammond

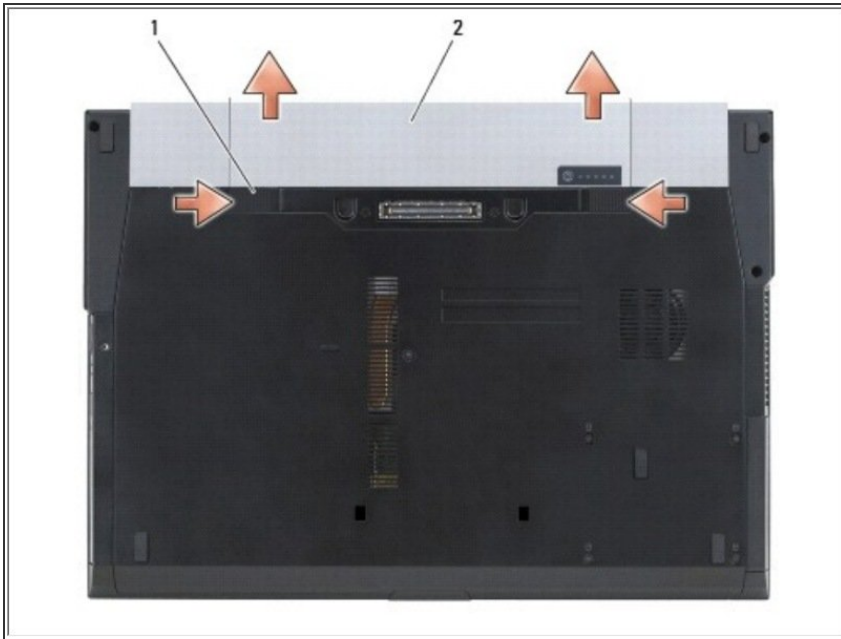




## TOOLS:

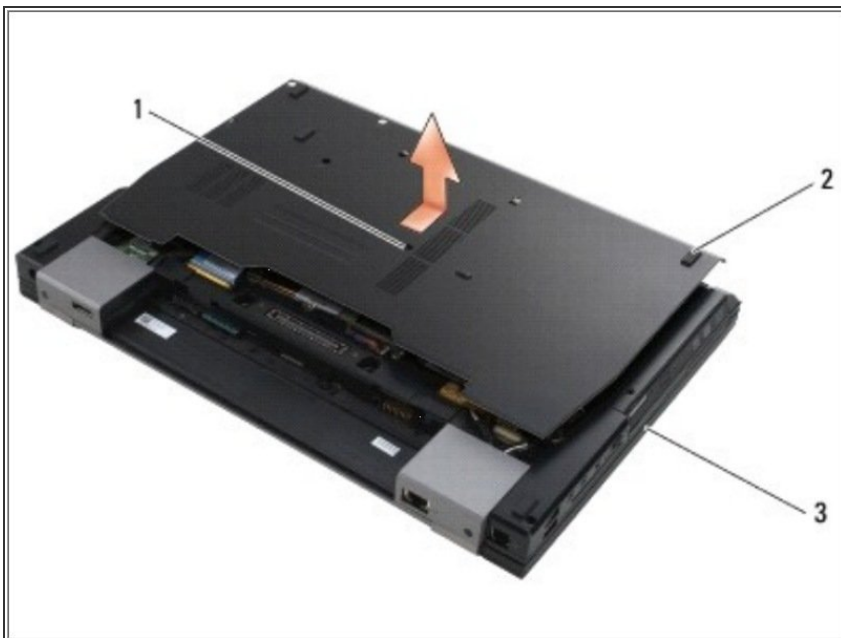
- [Phillips #0 Screwdriver](#) (1)
-

## Step 1 — Battery



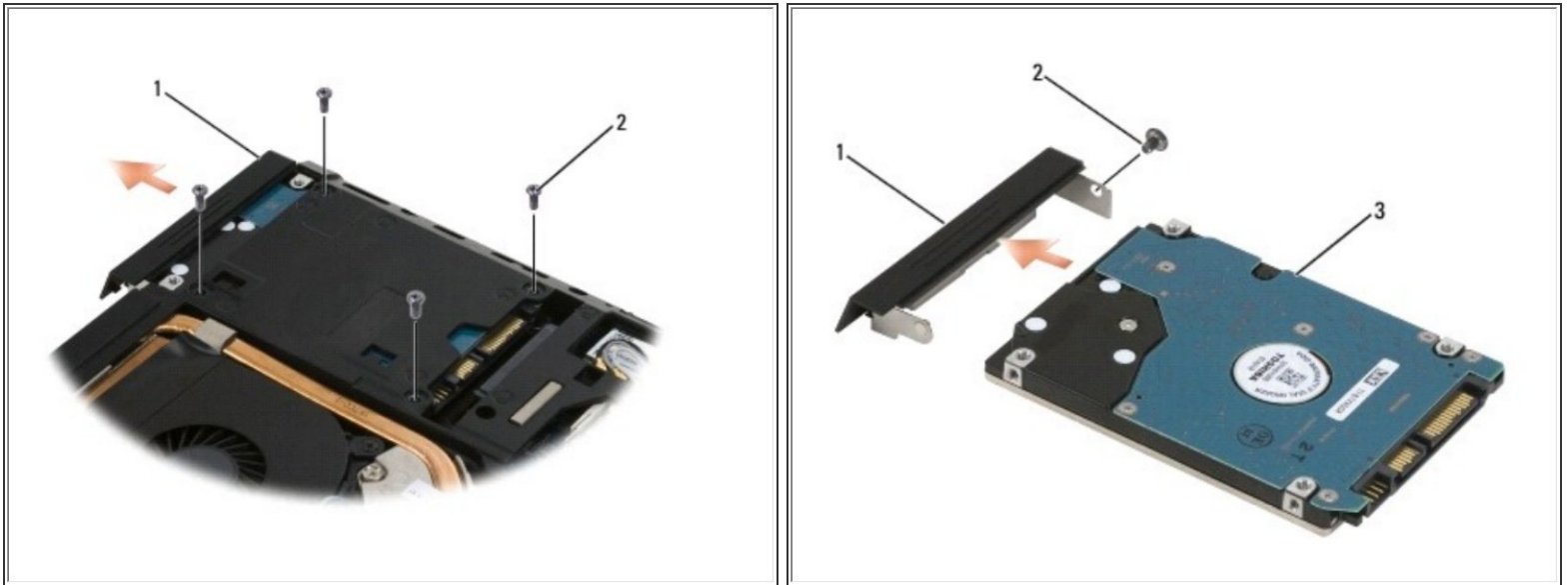
- Slide the battery release latches to the open position. (The latches lock into place).
- Grip the battery and slide it out of the battery bay.

## Step 2 — Base Cover



- Loosen the M2.5 x 5-mm captive screw.
- Using the rubber feet for leverage, slide the bottom of the base assembly toward the front of the computer 1/8th inch, then lift to remove it.

## Step 3 — Hard Drive



- (i)** NOTICE: When the hard drive is not in the computer, store it in protective anti-static packaging.
- Remove the four M3 x 3-mm screws securing the hard drive. These screws are on the bottom of the base cover.
- (i)** NOTE: If the bottom of the base cover is detached from the laptop, the four screws securing the hard drive are marked with an "H".
- Slide the hard drive out of the computer.
  - Remove the face plate screw and then the face plate from the hard drive.

To reassemble your device, follow these instructions in reverse order.