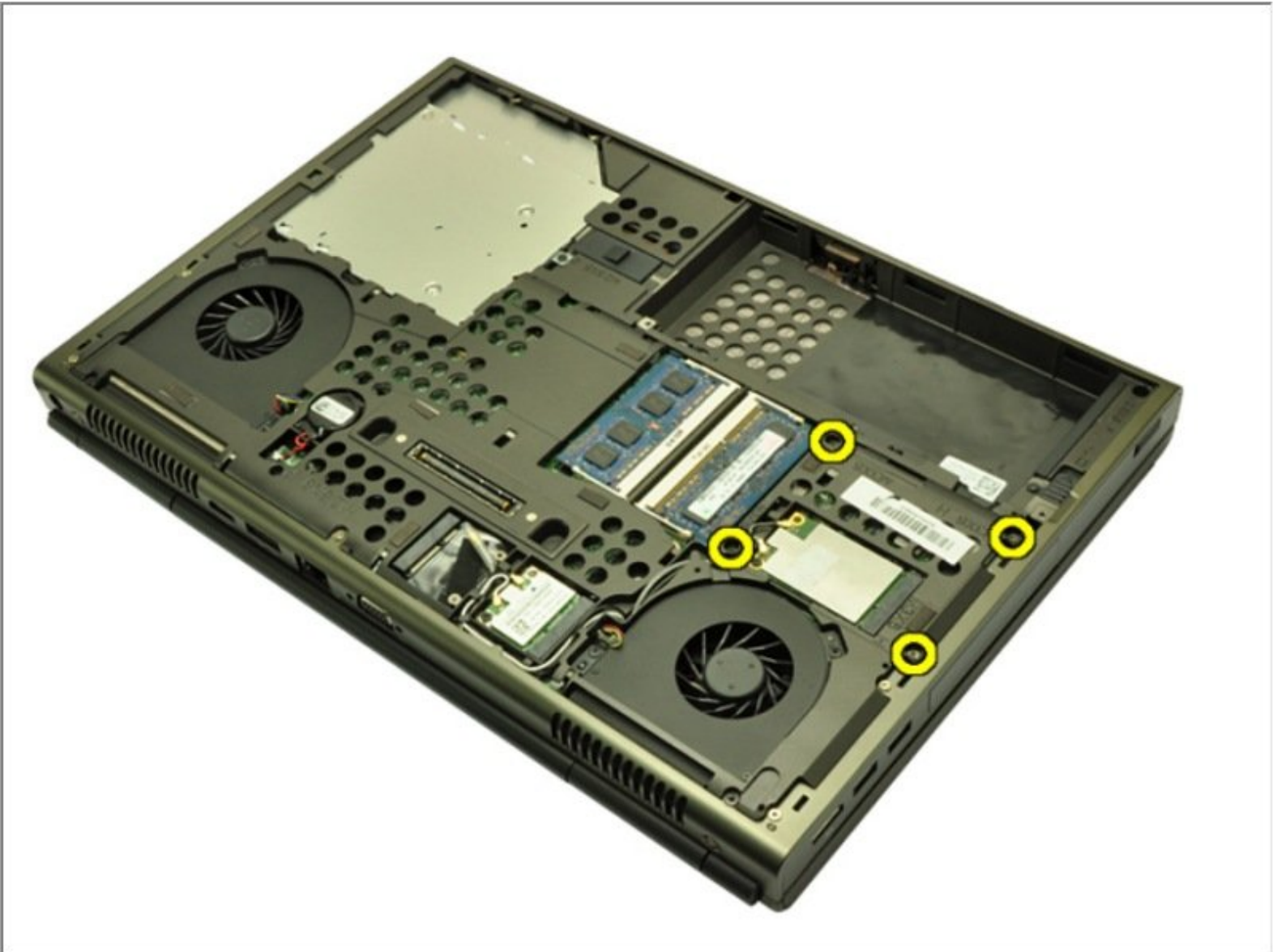




Dell Precision M4600 Hard Drive Replacement

Written By: Johnathan Hammond





TOOLS:

- [Phillips #0 Screwdriver](#) (1)



PARTS:

- [1 TB SSD / Upgrade Bundle](#) (1)
- [250 GB SSD / Upgrade Bundle](#) (1)
- [500 GB SSD / Upgrade Bundle](#) (1)
- [2 TB SSD / Upgrade Bundle](#) (1)

Step 1 — Battery



- Slide the battery release latch into the unlock position.
- Remove the battery from the system.

Step 2 — Base Cover



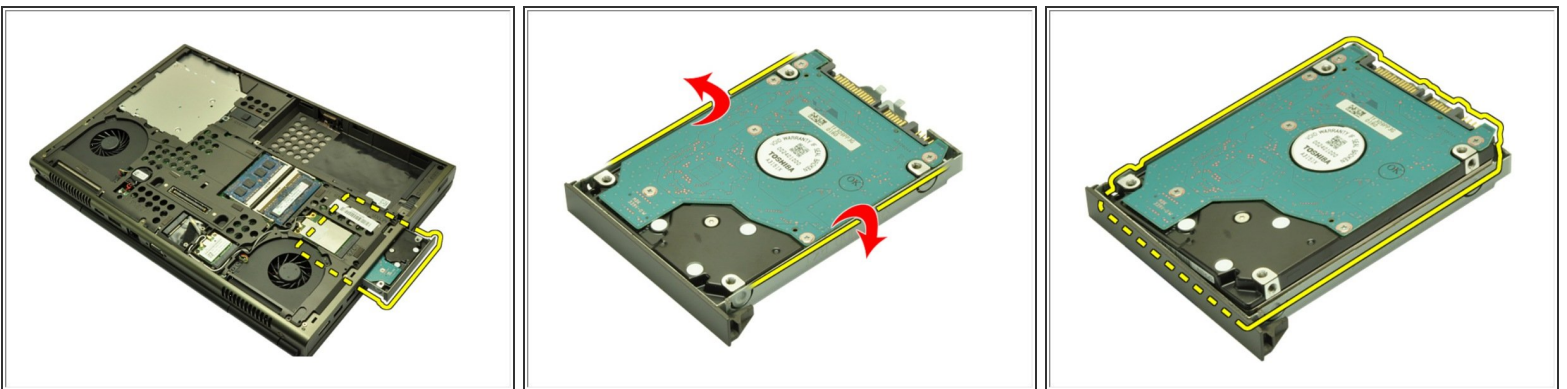
- Remove the screws that secure the base cover to the computer.
- Press the rubber feet towards the rear of the system to disengage the bottom door.
- Remove the base cover from the computer.

Step 3 — Hard Drive



- Remove the screws securing the hard drive bracket in place.
- Remove the screw securing the hard drive latch in place
- Slide the hard drive release latch into the unlock position.

Step 4



- Remove the hard drive bracket from the system.
- Flex the hard drive bracket outward and press the hard drive upwards from the bottom.
- Remove the hard drive from the hard drive bracket.

To reassemble your device, follow these instructions in reverse order.