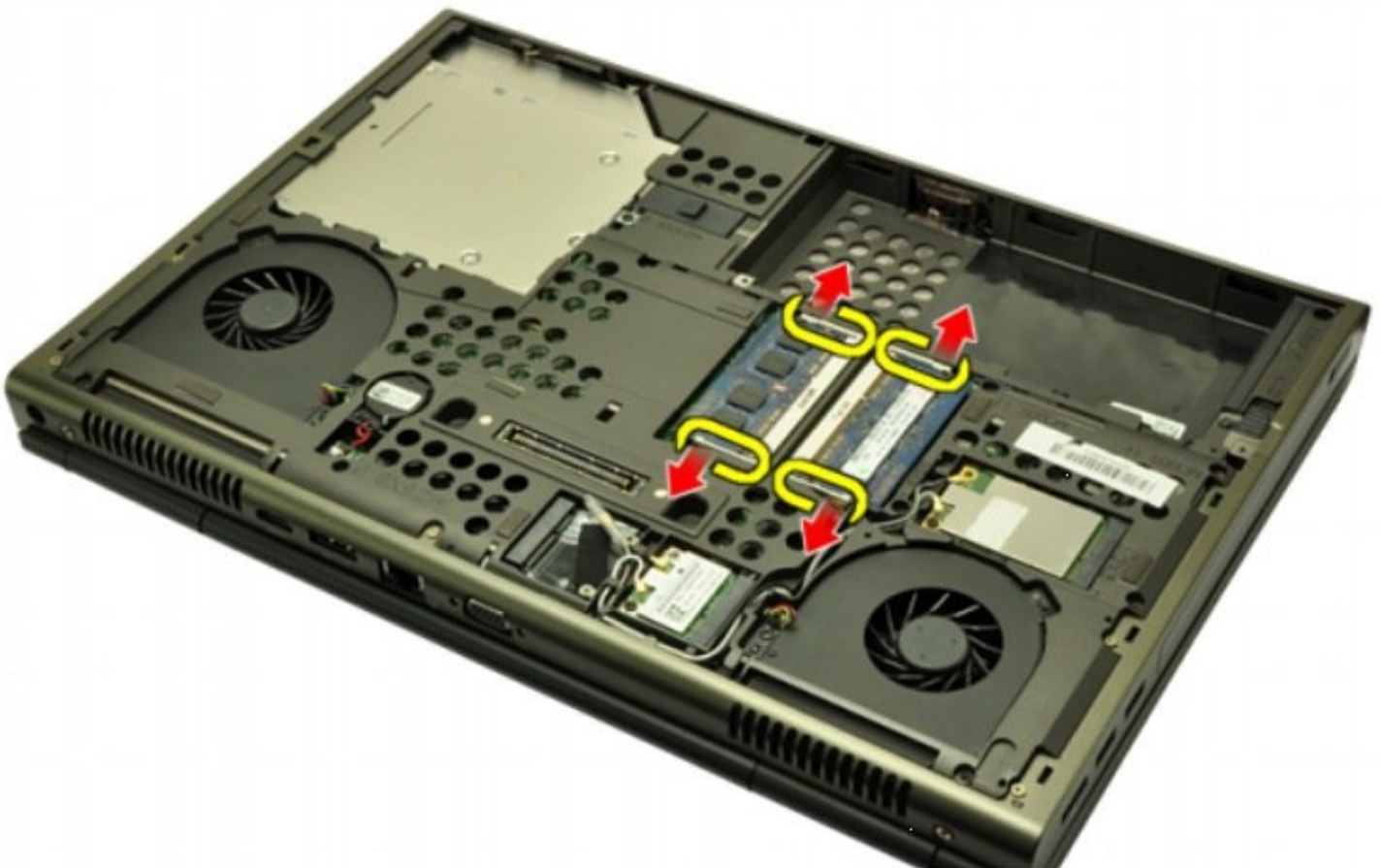




Dell Precision M4600 Memory Module Replacement

Written By: Johnathan Hammond

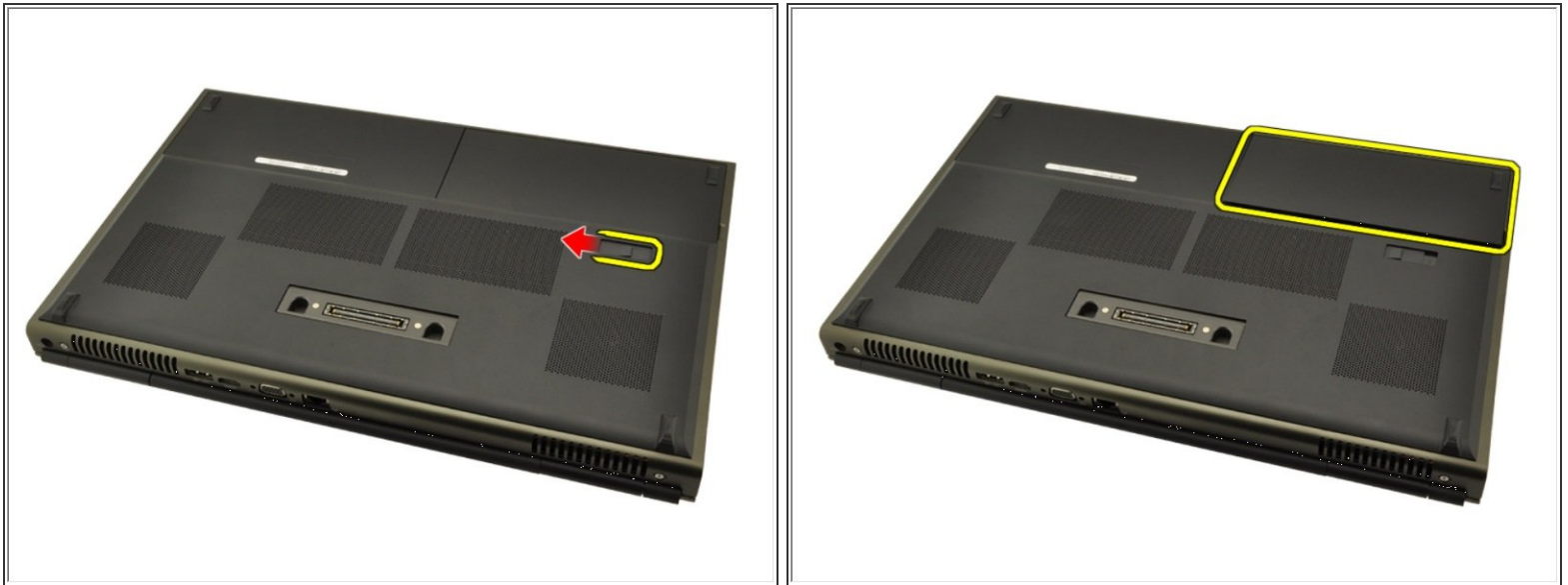




TOOLS:

- [Spudger](#) (1)
 - [Phillips #0 Screwdriver](#) (1)
-

Step 1 — Battery



- Slide the battery release latch into the unlock position.
- Remove the battery from the system.

Step 2 — Base Cover



- Remove the screws that secure the base cover to the computer.
- Press the rubber feet towards the rear of the system to disengage the bottom door.
- Remove the base cover from the computer.

Step 3 — Keyboard Trim



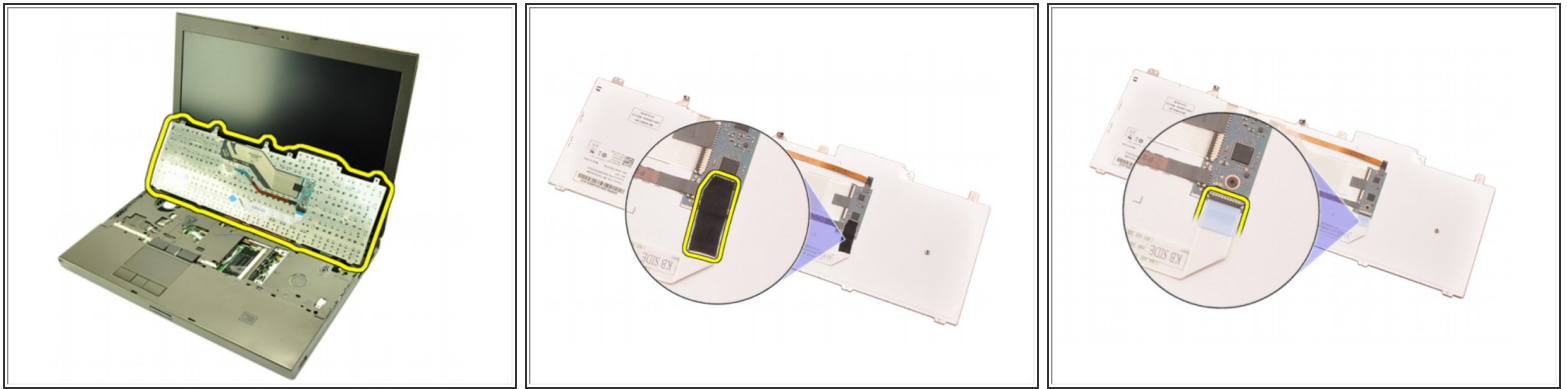
- Using a plastic scribe, pry under the keyboard trim to release it from the computer.
- Work your way around the sides and bottom edge of the keyboard trim.
- Lift up to remove the keyboard trim from the unit.

Step 4 — KeyBoard



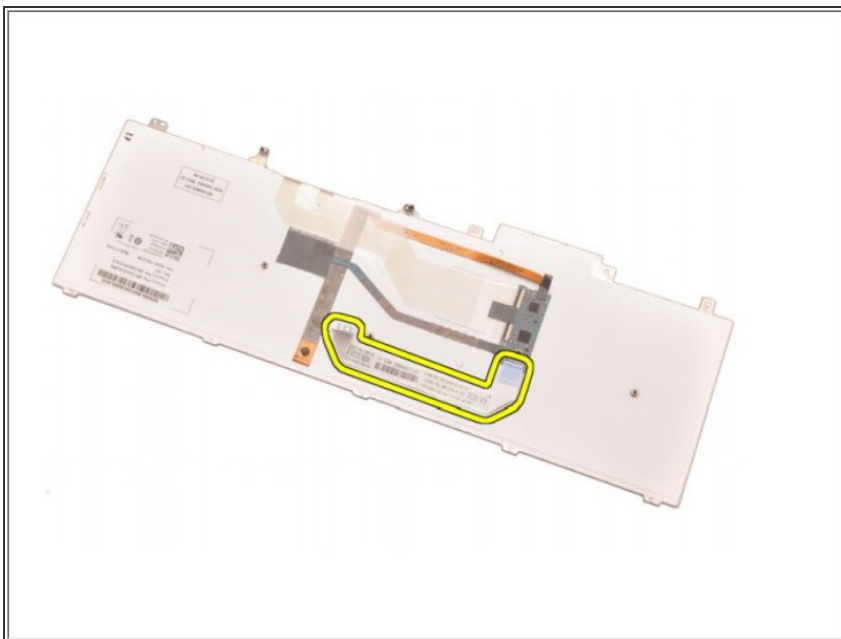
- Remove the screws securing the keyboard in place.
- Starting from the bottom of the keyboard, separate the keyboard from the system and turn the keyboard over.
- Disconnect the keyboard data cable from the system board.

Step 5



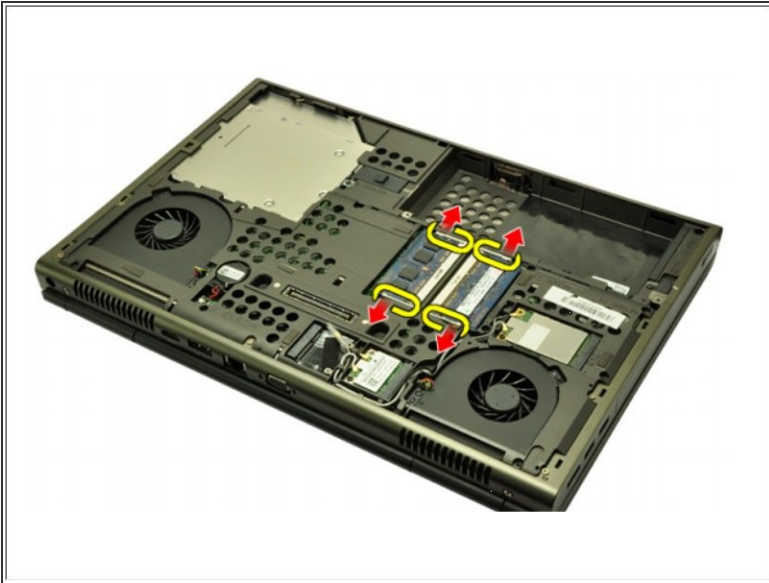
- Remove the keyboard.
 - Peel back the adhesive tape securing the keyboard data cable to the back of the keyboard.
 - Disconnect the keyboard data cable from the back of the keyboard.

Step 6



- Peel the keyboard data cable away from the keyboard and remove.

Step 7 — Memory Module



- Flip the the Bottom
- Gently pry the retention clips away from the memory modules.
 - Remove the memory modules from the computer.

Step 8



- Flip to the Top.
- Gently pry the retention clips away from the memory module.
 - Remove the memory module from the computer.

To reassemble your device, follow these instructions in reverse order.